

NORTHWEST SYRIA MARKET MONITORING EXERCISE

Snapshot: 3rd-10th May 2021

INTRODUCTION

To inform humanitarian cash programming, REACH - in partnership with the northeast (NES) and northwest (NWS) Syria Cash Working Group (CWG) - conducts monthly Market Monitoring Exercises in northern Syria to assess the availability and prices of 36 basic commodities that are typically sold in markets and consumed by average Syrian households, including food and non-food items, water, fuel, and cell phone data.

Of these, 18 items comprise the Survival Minimum Expenditure Basket (SMEB; see below right), which represents the minimum, culturally adjusted items required to support a 6-person household for a month.

The accompanying data is disseminated monthly and is distributed through partners across the humanitarian community. See REACH Resource Centre for the [May 2021 dataset](#).

Coverage and data collection dates

In May 2021, REACH and partners covered:

- 2 governorates
- 9 districts
- 33 subdistricts
- 80 communities
- 2,183 individual shops

In light of the fluctuation of the Syrian Pound (SYP)'s value and resulting market disruption, prices should be seen as representative only of the markets and dates where and when information was collected (3-10th May 2021).

Partners

Data collection for this month was conducted by REACH and the following partners:

- Care Shafak
- GOAL
- People In Need
- Syrian Association for Relief and Development (SARD)
- Solidarities International
- Violet

KEY DEVELOPMENTS

NES SMEB Basket value change

SYP

SMEB May value: 349,825 SYP

One month change (compared to April): **decrease of 15%**

Six month change (compared to November): **increase of 38%**

United States Dollar (USD)

SMEB May value: 115 USD

One month change: **decrease of 1%**

Six month change: **increase of 8%**

Despite minor short term decreases, the first half of 2021 has seen the highest recorded SMEB in SYP in the Market Monitoring exercise, attributed to the protracted hyperinflation of the Syrian economy. The SMEB in 2021 has ranged between 113-116 USD, which is the highest recorded cost in USD since May 2019.

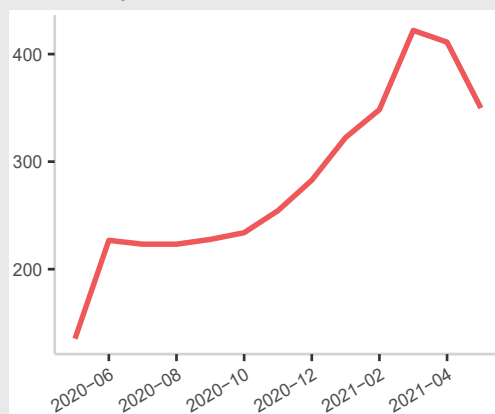
MEDIAN SMEB COST FOR NWS

349,825 SYP (115 USD)

NWS COVERAGE: IDLEB, WESTERN & NORTHERN ALEPPO GOVERNORATES

MEDIAN SMEB COSTS, BY MONTH

Thousand Syrian Pounds



SMEB Water Trucking decrease #1

NWS average: 13,016 SYP per 4,500 litres

One month change: **decrease of 11%**

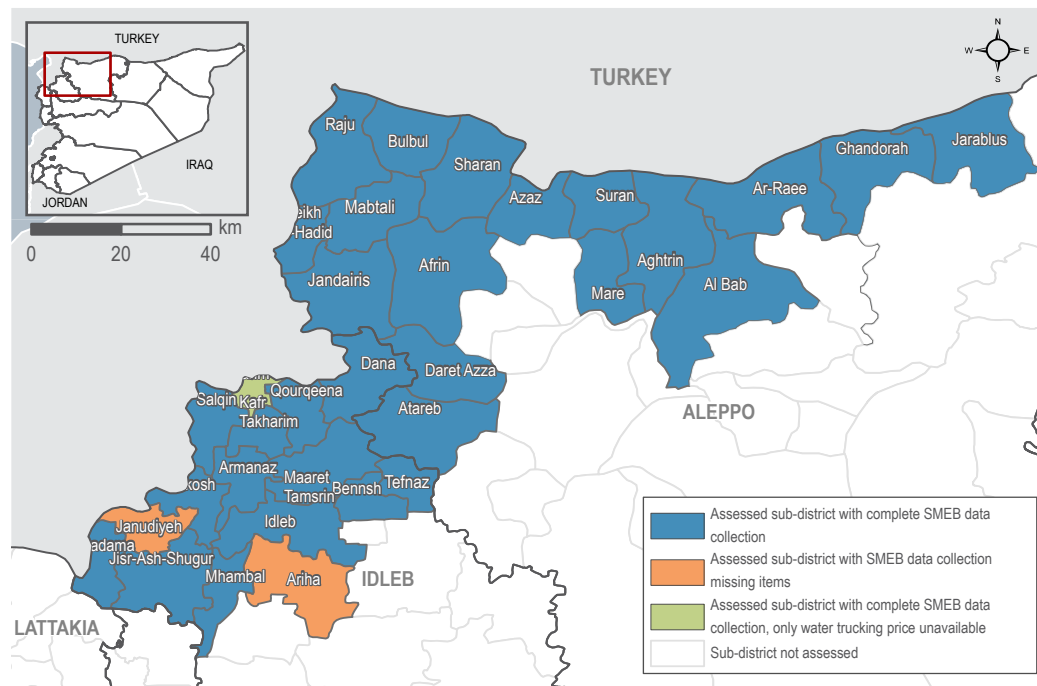
Six month change: **increase of 31%**

% of surveyed vendors reporting item as unavailable in their community/neighbourhood: 0%

Although prices at the regional level have dropped due to the appreciation of the SYP, "harsh weather conditions and low rainfall levels" are an ever growing threat to the availability of both clean water and food for many, according to the [WFP mVAM bulleting no.55: May 2021](#). Water trucking is the main source of clean water for most individuals, yet prices are currently erratic across governorates:

- Idleb: 11,659 SYP per 4,500 litres
- Aleppo: 13,905 SYP per 4,500 litres

ASSESSED AREAS AND COVERAGE



#1 Equates to 25L per person for day. See page 6 for further water trucking data

NORTHWEST SYRIA - KEY DEVELOPMENTS AND OVERVIEW

MEDIAN SMEB COSTS & CHANGES

Syrian Pounds

| Sub-district | SMEB | One month change | Six month change |
|------------------------|----------------|------------------|------------------|
| Northwest Syria | 349,825 | -15% | 38% |
| Afrin | 379,206 | NA | NA |
| Aghtrin | 330,417 | -14% | 35% |
| Al Bab | 326,424 | -14% | 39% |
| Ariha | NA | NA | NA |
| Armanaz | 390,726 | -15% | 48% |
| Ar-Ra'ee | 339,433 | -12% | 38% |
| Atareb | 395,517 | -8% | 35% |
| A'zaz | 331,273 | -13% | 38% |
| Badama | 344,266 | -14% | 26% |
| Bennsh | 346,468 | -11% | 38% |
| Bulbul | 347,947 | NA | 30% |
| Dana | 370,582 | -13% | 37% |
| Daret Azza | 348,017 | -9% | 39% |
| Darkosh | 370,448 | -10% | 45% |
| Ghandorah | 341,044 | -16% | 43% |
| Harim | NA | NA | NA |
| Idleb | 400,785 | -11% | 61% |
| Jandairis | 367,536 | NA | 33% |
| Janudiyeh | NA | NA | NA |
| Jarablus | 355,966 | -18% | 42% |
| Jisr-Ash-Shugur | 344,976 | -17% | 31% |
| Kafr Takharim | 359,008 | -13% | 35% |
| Maaret Tamsrin | 371,211 | -10% | 39% |
| Ma'btali | 341,939 | NA | NA |
| Mare' | 349,327 | -13% | 38% |
| Mhambal | 359,490 | -13% | 39% |
| Qourqeena | 362,117 | -14% | 37% |
| Raju | 330,434 | NA | NA |
| Salqin | 362,542 | -14% | 43% |
| Sharan | 338,778 | NA | 33% |
| Sheikh El-Hadid | 350,701 | NA | 75% |
| Suran | 349,743 | -15% | 39% |
| Teftnaz | 349,908 | -11% | 33% |

SURVIVAL MINIMUM EXPENDITURE BASKET (SMEB) CONTENTS

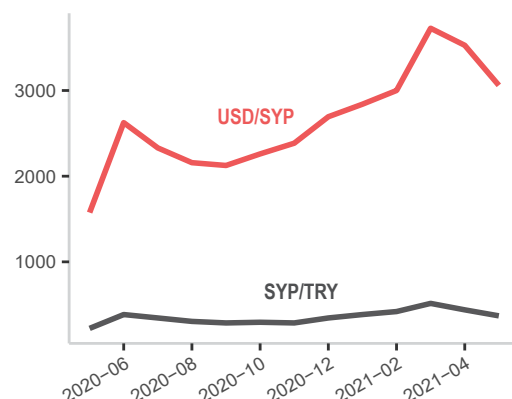
| | Item | Quantity |
|---------------|-----------------------|------------------|
| Food Items | Bread | 37 kg |
| | Bulgur | 15 kg |
| | Chicken | 6 kg |
| | Eggs | 6 kg |
| | Fresh vegetables | 12 kg |
| | Ghee/vegetable oil | 7 kg/L |
| | Red lentils | 15 kg |
| | Rice | 19 kg |
| | Salt | 1 kg |
| | Sugar | 5 kg |
| Hygiene items | Tomato paste | 6 kg |
| | Bathing soap | 12 bars |
| | Laundry/dish soap | 3 kg |
| | Sanitary pads | 4 packs of 10 |
| | Toothpaste | 200 g |
| Fuel | Cooking fuel+ | 25 L |
| Water | Water trucking | 4500 L |
| Telecom | Smartphone data | 1 GB |
| Other | Float (other costs)++ | 7.5% total value |

+ Kerosene in northern Syria

++ Float only applied to observations where prices of all SMEB contents could be collected.

Note: Lack of data for a SMEB item does not necessarily imply a shortage.

EXCHANGE RATES, BY MONTH & CURRENCY



KEY DEVELOPMENTS CONTINUED

High Quality Transport Fuels #2

The significant unavailability of lower quality but less expensive fuels (largely European fuels imported via Turkey) forces prices for high quality diesel and petrol to remain high, driven both by increasing demand as well as by fluctuating exchange rates of both the SYP and the TRY against the USD.

High Quality Diesel: 2,300 SYP per litre

One month change: **decrease of 13%**

Six month change: **increase of 58%**

% of surveyed vendors reporting item as unavailable in their community/ neighbourhood: 3%

High Quality Petrol: 2,393 SYP per litre

One month change: **decrease of 14%**

Six month change: **increase of 60%**

% of surveyed vendors reporting item as unavailable in their community/ neighbourhood: 3%

Low Quality Manually Refined Fuels

Manually refined fuels remain frequently unavailable in NWS due to low levels of import. Incidents in and around refineries further reduced the availability of manually refined fuels, according to REACH field teams. REACH field teams also reported that manually refined fuels are often used as transport fuel as high quality fuels are rarely available.

Manually Refined Diesel: 1,600 SYP per litre

One month change: **decrease of 16%**

Six month change: **increase of 36%**

% of surveyed vendors reporting item as unavailable in their community/ neighbourhood: 6%

Manually Refined Petrol: 1,500 SYP per litre

One month change: **decrease of 31%**

Six month change: **increase of 22%**

% of surveyed vendors reporting item as unavailable in their community/ neighbourhood: 77%

Exchange Rates Fall #3

USD

Informal USD/SYP regional median exchange rate: 3,060 SYP to 1 USD

One month change: **decrease of 13%**

Six month change: **increase of 28%**

In May, the SYP continued to appreciate against the USD (see graph, left). This is typically attributed to **earlier than expected improvements in the global economy** and the knock-on impacts for national economies. The highest exchange rate was recorded at 3,150 SYP for 1 USD in Azmarin community, in Idleb governorate.

Turkish Lira (TRY)

Informal USD/TRY regional median exchange rate: 8.33 TRY to 1 USD

One month change: **increase of 2%**

Six month change: **decrease of 1%**

* For these sub-districts, more than 50% of the items' median prices rely on less than 3 observations.

**For these sub-districts, all of the items' median prices rely on less than 3 observations.

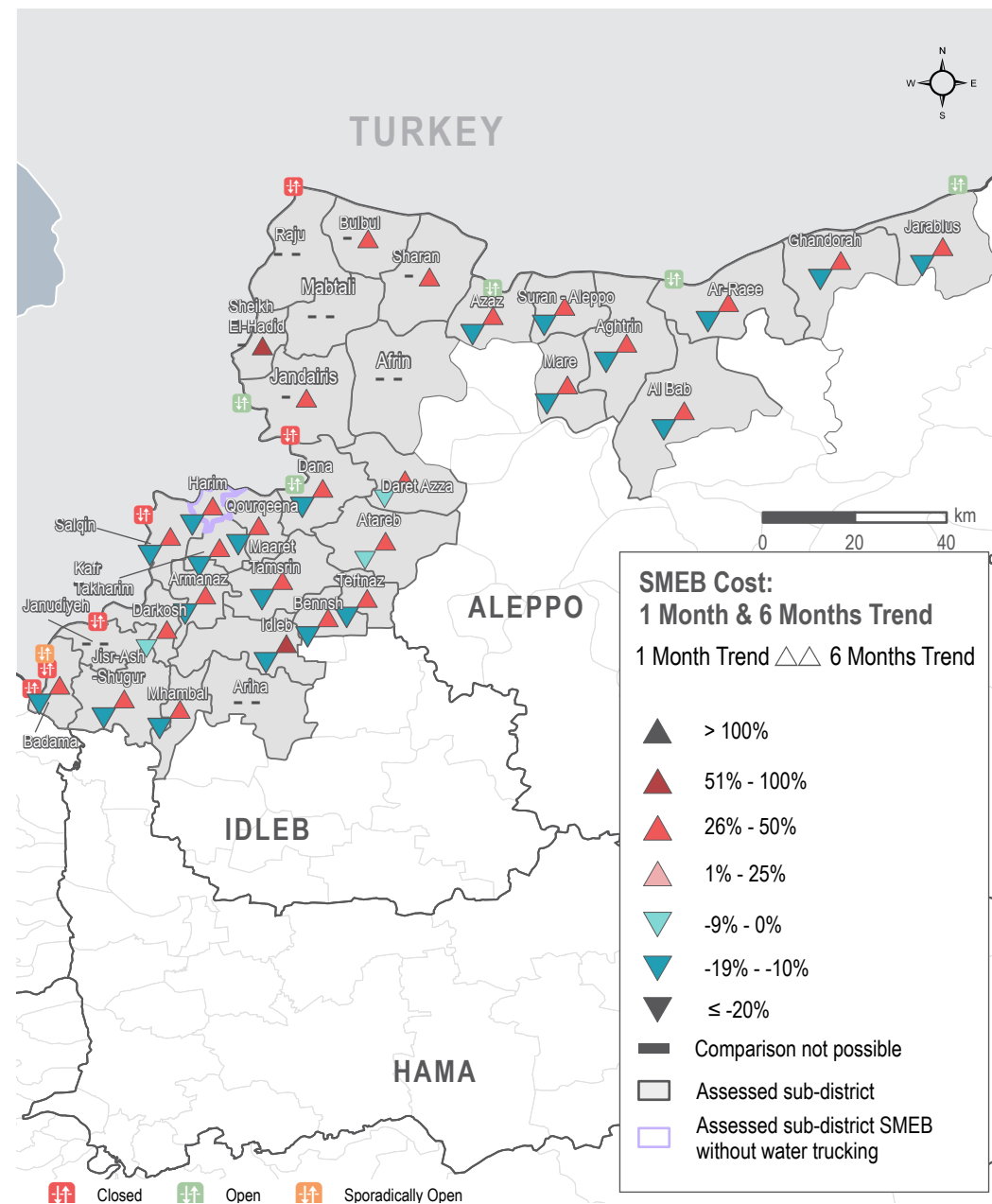
Note: For price and change calculations, only the communities within a sub-district with consistent coverage across months are included. The above applies to all tables.

#2 See page 10 for further fuel data

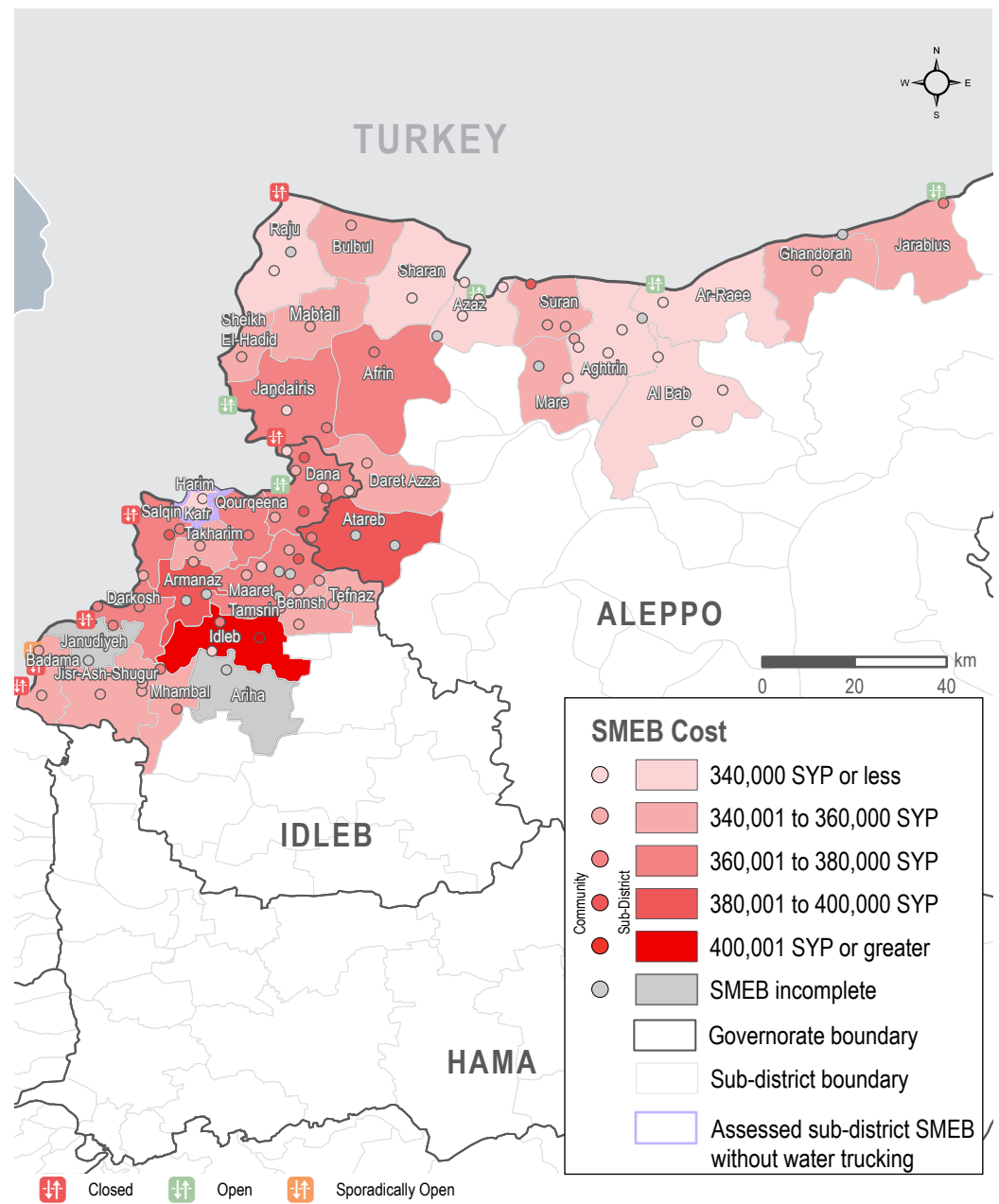
#3 To compare SYP prices to USD or TRY, our **May 2021 dataset** provides informal exchange rates at the regional, district, subdistrict and community levels, where data is available

NORTHWEST SYRIA - KEY DEVELOPMENTS AND OVERVIEW

SMEB Cost: one month and six months trend



SMEB cost ranges (SYP), by sub-districts and communities



NORTHWEST SYRIA - SMEB FOOD ITEMS

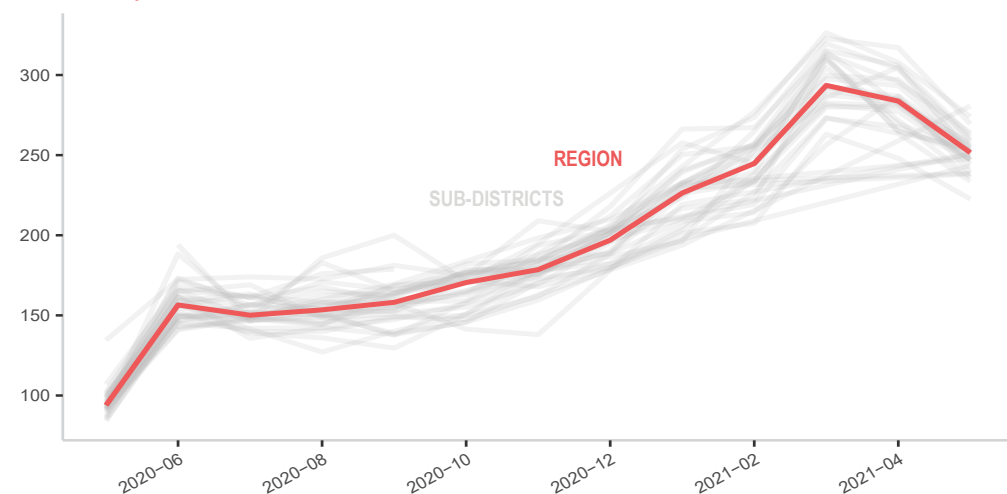
MEDIAN SMEB COST: FOOD ITEMS

Syrian Pounds

| Sub-district | SMEB Food | One month change | Six month change | Sub-district | SMEB Food | One month change | Six month change |
|-----------------|-----------|------------------|------------------|-----------------|-----------|------------------|------------------|
| Northwest Syria | 251,524 | -11% | 41% | Idlib | 255,839 | -11% | 45% |
| Afrin | 280,625 | NA | NA | Jandairis | 250,639 | NA | 29% |
| Aghtrín | 233,655 | -11% | 37% | Janudiyeh | 252,830 | -11% | 27% |
| Al Bab | 222,603 | -10% | 39% | Jarablus | 250,275 | -18% | 42% |
| Ariha | NA | NA | NA | Jisr-Ash-Shugur | 247,000 | -13% | 40% |
| Armanaz | 269,459 | -15% | 47% | Kafr Takharim | 259,865 | -14% | 41% |
| Ar-Ra'ee | 252,170 | -10% | 46% | Maaret Tamsrin | 257,388 | -9% | 43% |
| Atareb | 273,991 | -11% | 31% | Ma'btali | 238,716 | NA | NA |
| A'zaz | 236,113 | -13% | 39% | Mare' | 244,200 | -14% | 39% |
| Badama | 248,181 | -7% | 34% | Mhambal | 258,791 | -13% | 37% |
| Bennsh | 253,475 | -4% | 37% | Qourqeena | 254,694 | -10% | 41% |
| Bulbul | 247,830 | NA | 39% | Raju | 238,225 | NA | NA |
| Dana | 254,835 | -13% | 36% | Salqin | 262,088 | -14% | 51% |
| Daret Azza | 252,255 | -6% | 39% | Sharan* | 243,400 | NA | 45% |
| Darkosh | 263,973 | -11% | 44% | Sheikh El-Hadid | 250,878 | NA | 82% |
| Ghadorah | 239,150 | -17% | 48% | Suran | 247,090 | -11% | 39% |
| Harim | 246,675 | -12% | 39% | Teftnaz | 253,000 | -4% | 30% |

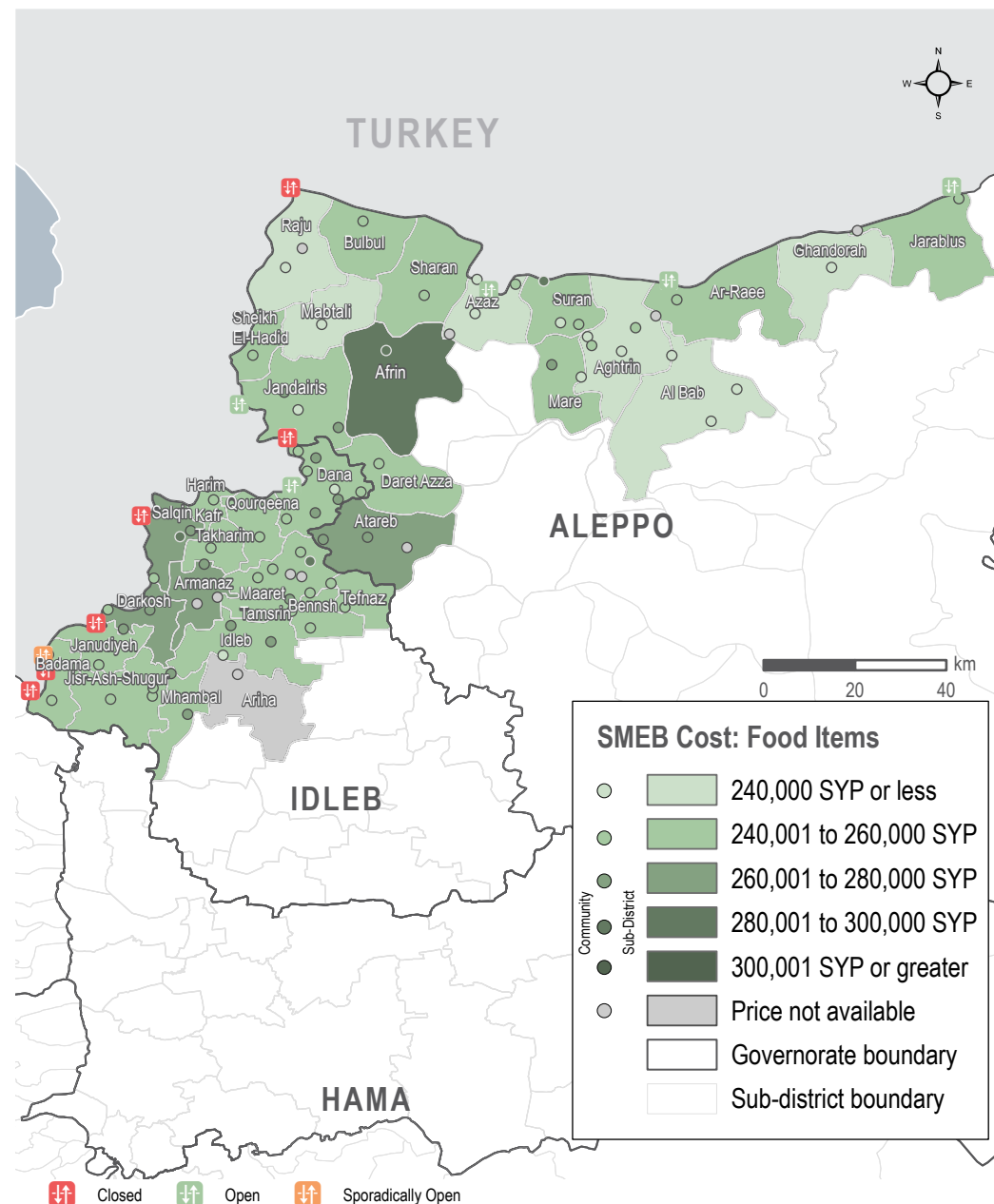
MEDIAN SMEB COST: FOOD ITEMS, BY MONTH

Thousand Syrian Pounds



SMEB FOOD ITEMS' COST

Sub-districts & Communities, Syrian Pounds



SMEB FOOD COMPONENT 251,524 SYP (82 USD)

One month change: **decrease of 11%**

Six month change: **increase of 41%**

Highest % of surveyed vendors reporting a SMEB food item as unavailable in their community/neighbourhood: 1% for chicken

Highest % of surveyed vendors reporting item as unavailable in their community/neighbourhood for previous month: 2% for bread

SMEB BULK FOODS 106,175 SYP (35 USD)

One month change: **decrease of 16%**

Six month change: **increase of 32%**

Almost all bulk food items decreased in price: tomato paste decreased (22%), bulgur decreased (16%), rice decreased (15%), red lentils decreased (15%), sugar decreased (16%), salt prices no change (0%),

According to REACH field teams, these items are typically imported, but their prices decreased due to appreciation of the SYP against the TRY and USD. They are rarely produced locally, subjecting them to import fees and fluctuations of the SYP.

SMEB VEGETABLE COMPONENT 10,650 SYP (4 USD)

One month change: **decrease of 36%**

Six month change: **increase of 8%**

Cucumbers decreased by 46%, tomatoes decreased by 42%, onions decreased by 19%, potatoes decreased by 0%.

REACH field teams attribute these price drops to key vegetable items being in season and produced locally, supported by significant imports from Government of Syria (GoS) areas and the SYP appreciation.

BREAD 846 SYP PER 8 PIECE BUNDLE (0.3 USD)

One month change: **decrease of 11%**

Six month change: **decrease of 41%**

% of surveyed vendors reporting item as unavailable in their community/neighbourhood: 1%

Price fluctuations are attributed to both the appreciation of the SYP and general subsidies by the authorities. Prices for bread can vary between governorates, but in May were somewhat similar:

Aleppo: 825 SYP

Idlib: 850 SYP

For a deeper analysis of the bread and wheat context in NWS, please see the [Bakery Facility Mapping Study for Northwest Syria, Q1 2021](#).

FLOUR 1,200 SYP PER KILO (0.4 USD)

One month change: **decrease of 14%**

Six month change: **increase of 49%**

% of surveyed vendors reporting item as unavailable in their community/neighbourhood: 0%

Flour is typically imported from Turkey and is thus affected by a fluctuating exchange rate.

CHICKEN 6,363 SYP PER KILO (2.1 USD)

One month change: **increase of 8%**

Six month change: **increase of 119%**

% of surveyed vendors reporting item as unavailable in their community/neighbourhood: 1%

Prices for chicken increased significantly due to the closure of crossings, the high price of fodder and an increase in demand, according to REACH field teams.

EGGS 5,600 SYP FOR 30 EGGS (1.8 USD)

One month change: **decrease of 10%**

Six month change: **increase of 11%**

% of surveyed vendors reporting item as unavailable in their community/neighbourhood: 0%

COOKING FUELS

Kerosene and LP gas are the typical cooking and heating fuels in NWS, and somewhat similar in price per litre although kerosene is much more widely available.

Manually Refined Kerosene: 1,900 SYP per litre (0.6 USD)

One month change: **decrease of 25%**

Six month change: **increase of 24%**

% of surveyed vendors reporting item as unavailable in their community/neighbourhood: 72%

LP Gas: 40,625 SYP per canister (20 Litres) (13.3 USD)

One month change: **decrease of 16%**

Six month change: **increase of 51%**

% of surveyed vendors reporting item as unavailable in their community/neighbourhood: 0%

^{#4} May informal regional exchange rate for NWS: 3,060 SYP

NORTHWEST SYRIA - SMEB WATER TRUCKING

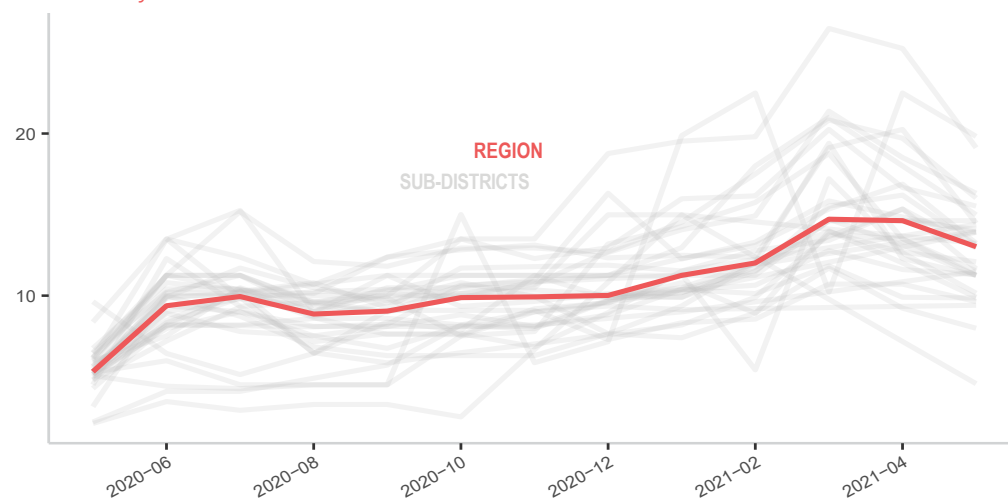
MEDIAN SMEB WATER TRUCKING PRICE

4,500L, Syrian Pounds

| Sub-district | SMEB Water Truck | One month change | Six month change |
|------------------------|------------------|------------------|------------------|
| Northwest Syria | 13,016 | -11% | 31% |
| Afrin | 13,950 | NA | NA |
| Aghtrn | 14,085 | -4% | 25% |
| Al Bab | 16,313 | -12% | 26% |
| Ariha | 9,630 | -10% | 6% |
| Armanaz | 11,659 | -24% | 70% |
| Ar-Ra'ee | 9,900 | -18% | -1% |
| Atareb | 9,855 | 0% | 22% |
| A'zaz | 12,938 | -16% | 34% |
| Badama | 11,250 | -8% | 13% |
| Bennsh | 7,988 | -13% | 27% |
| Bulbul | 14,400 | NA | 22% |
| Dana | 11,295 | -3% | 39% |
| Daret Azza | 10,148 | -20% | 27% |
| Darkosh | 15,525 | -7% | 26% |
| Ghandorah** | 14,625 | 0% | 30% |
| Harim** | NA | NA | NA |

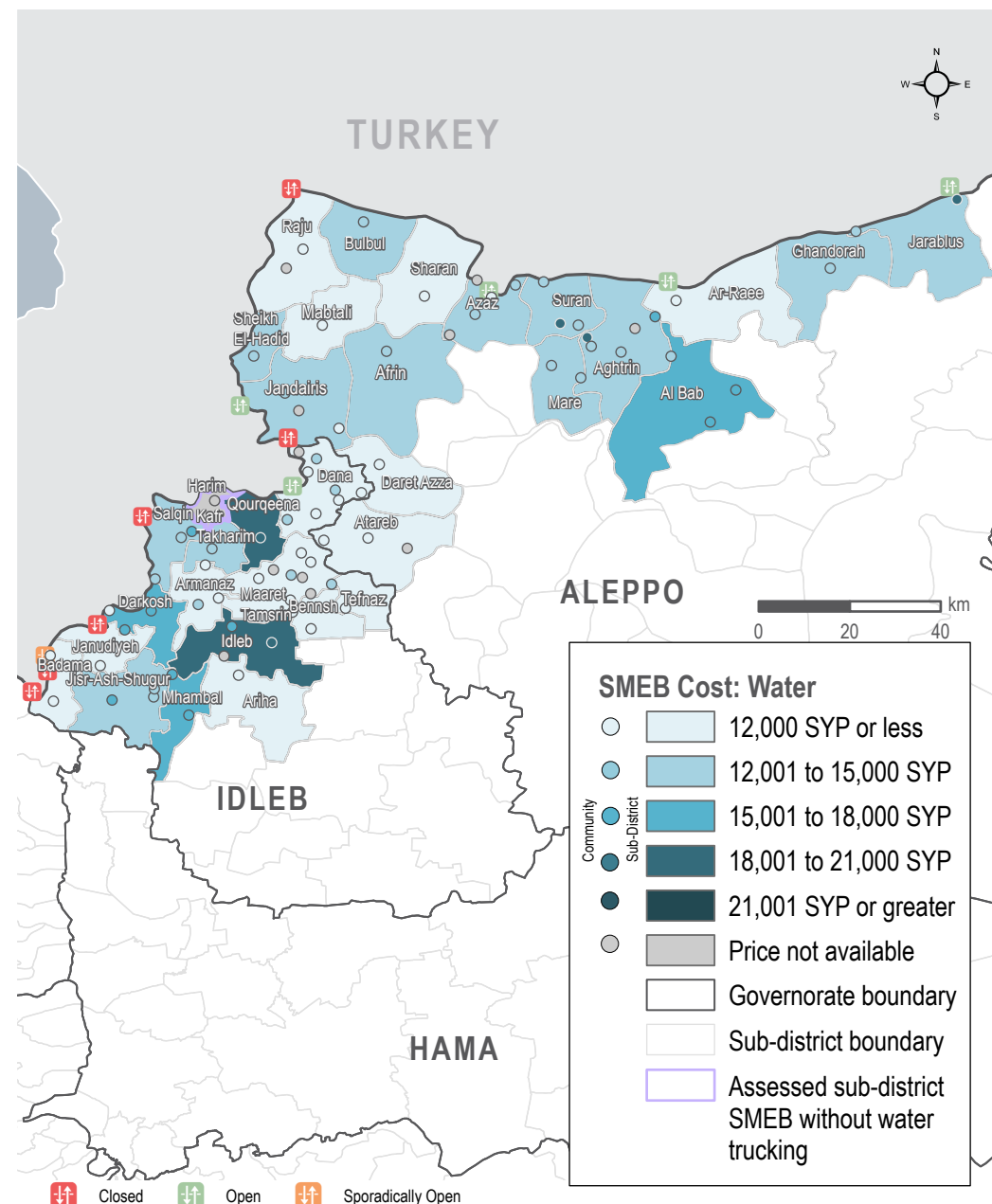
MEDIAN SMEB WATER TRUCKING COSTS, BY MONTH

Thousand Syrian Pounds



SMEB WATER TRUCKING COST

Sub-districts & Communities, Syrian Pounds



NORTHWEST SYRIA - SMEB HYGIENE ITEMS W

MEDIAN SMEB HYGIENE ITEMS' PRICE

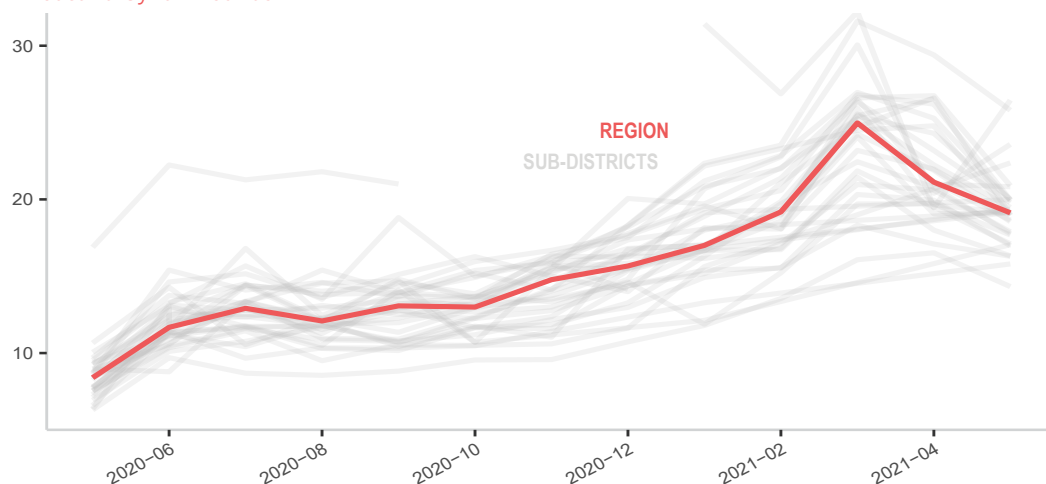
12 bars of soap, 4 packs of 10 sanitary pads, 200g of toothpaste, 3kg of laundry/dish soap, Syrian Pounds

| Sub-district | SMEB Hygiene Items | One month change | Six month change |
|------------------------|--------------------|------------------|------------------|
| Northwest Syria | 19,125 | -9% | 29% |
| Afrin | 17,050 | NA | NA |
| Agthrin | 14,325 | -13% | 50% |
| Al Bab | 16,985 | -15% | 33% |
| Ariha | 25,800 | -12% | 83% |
| Armanaz | 19,798 | -15% | 40% |
| Ar-Ra'ee | 19,132 | 0% | 42% |
| Atareb | 26,457 | 36% | 43% |
| A'zaz | 17,686 | -10% | 33% |
| Badama | 19,967 | -24% | 20% |
| Bennsh | 19,083 | -13% | 27% |
| Bulbul | 19,992 | NA | 22% |
| Dana | 19,935 | -21% | 21% |
| Daret Azza | 18,947 | -24% | 19% |
| Darkosh | 23,580 | 16% | 81% |
| Ghadorah | 16,325 | -9% | 32% |
| Harim | 18,984 | -29% | 22% |

| Sub-district | SMEB Hygiene Items | One month change | Six month change |
|-----------------|--------------------|------------------|------------------|
| Idleb | 17,110 | -12% | 16% |
| Jandairis | 19,150 | NA | 36% |
| Janudiyeh** | NA | NA | NA |
| Jarablus | 17,889 | -13% | 54% |
| Jisr-Ash-Shugur | 18,650 | -12% | 21% |
| Kafr Takharim | 20,825 | -1% | 36% |
| Maaret Tamsrin | 20,000 | -18% | 26% |
| Ma'btali | 15,800 | NA | NA |
| Mare' | 18,550 | -15% | 35% |
| Mhambal | 16,298 | -5% | 34% |
| Qourqeena | 20,888 | -22% | 29% |
| Raju | 19,200 | NA | 27% |
| Salqin | 19,118 | -3% | 73% |
| Sharan | 19,367 | NA | 24% |
| Sheikh El-Hadid | 22,376 | NA | 111% |
| Suran | 17,768 | -15% | 50% |
| Tefnaz | 19,476 | -12% | 22% |

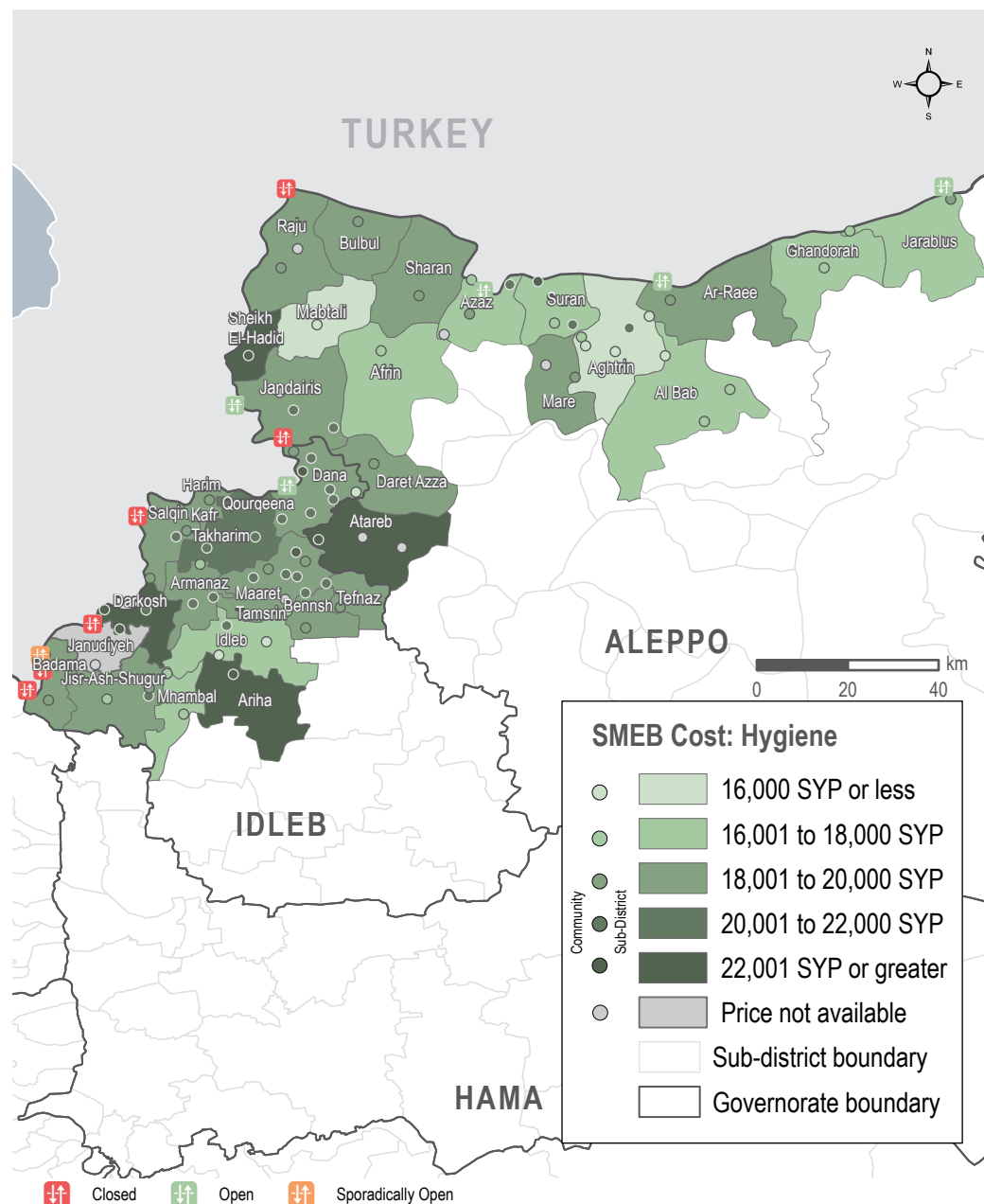
MEDIAN SMEB HYGIENE ITEMS' COSTS, BY MONTH

Thousand Syrian Pounds



SMEB HYGIENE ITEMS' COST

Sub-districts & Communities, Syrian Pounds



NORTHWEST SYRIA - SMEB CELLPHONE DATA

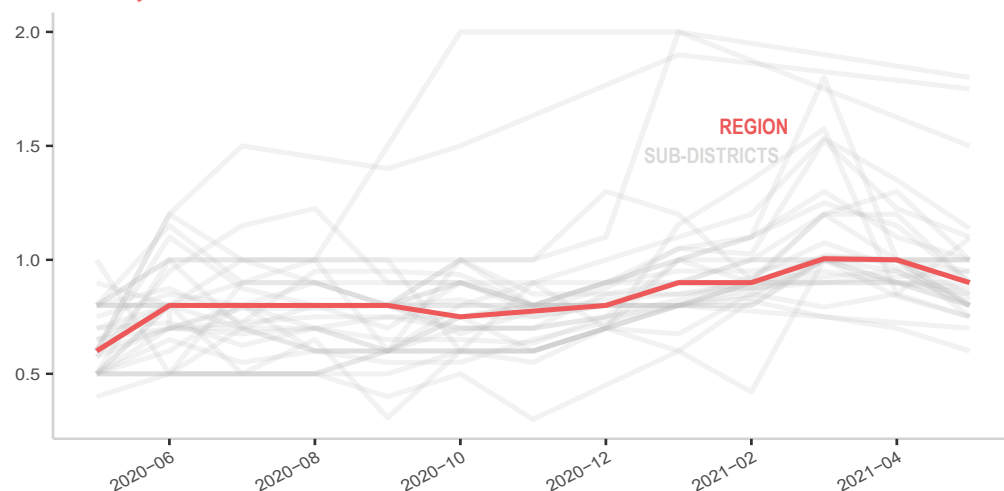
MEDIAN SMEB CELLPHONE DATA PRICE

1GB data, Syrian Pounds

| Sub-district | SMEB Data (1GB) | One month change | Six month change |
|------------------------|-----------------|------------------|------------------|
| Northwest Syria | 900 | -10% | 16% |
| Afrin | 1,750 | NA | NA |
| Aghtrín | 800 | -20% | 0% |
| Al Bab | 875 | -3% | 25% |
| Ariha | 600 | -14% | 0% |
| Armanaz | 800 | -11% | 7% |
| Ar-Ra'ee | 800 | -11% | 0% |
| Atareb | 1,095 | 29% | 22% |
| A'zaz | 800 | -20% | 0% |
| Badama | 850 | -6% | 21% |
| Bennsh | 750 | -12% | 36% |
| Bulbul | 950 | NA | 23% |
| Dana | 850 | -15% | 6% |
| Daret Azza | 1,138 | -16% | 26% |
| Darkosh | 900 | -10% | 50% |
| Ghandorah | 900 | -22% | 13% |
| Harim | 900 | -25% | 13% |

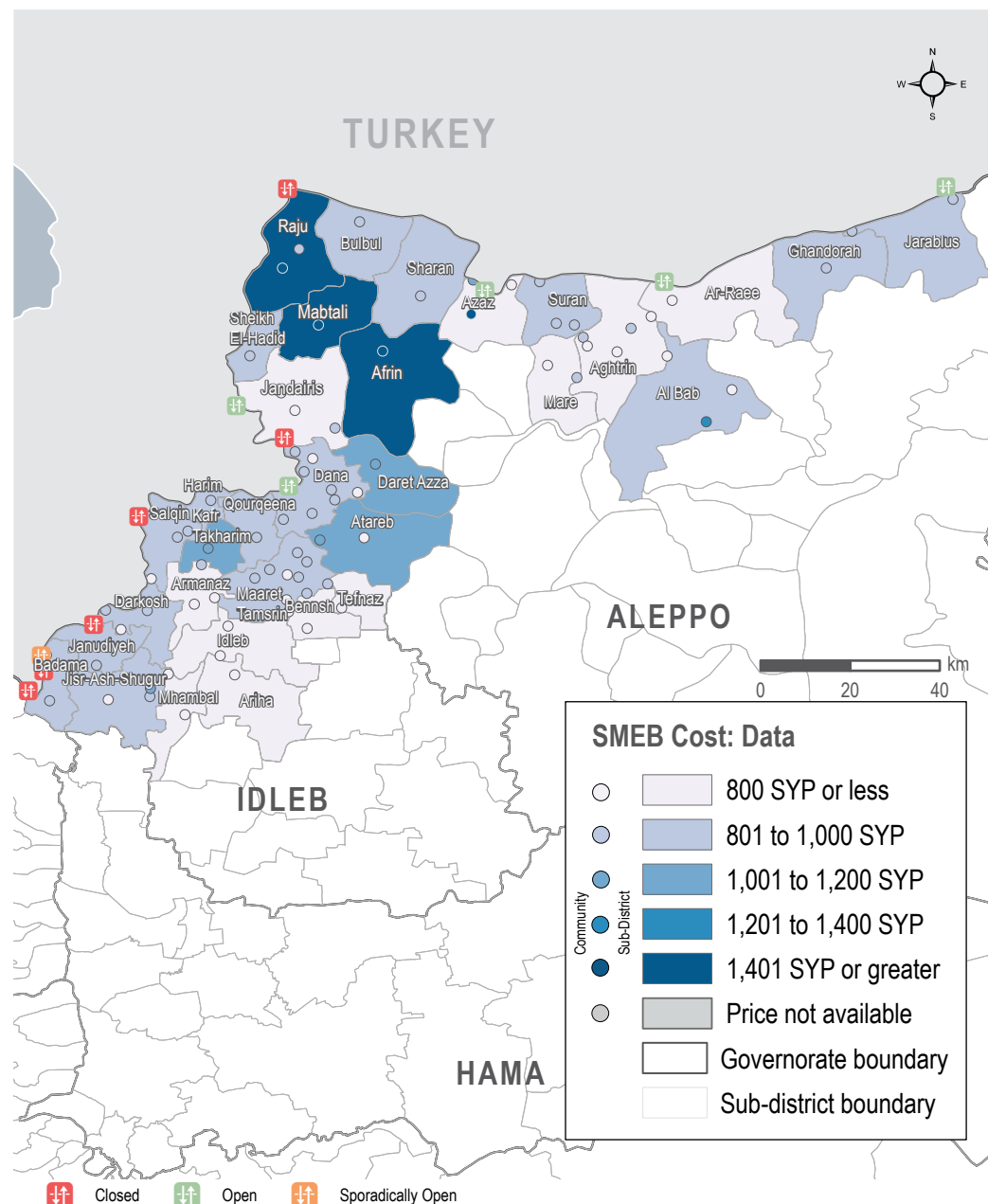
MEDIAN SMEB CELLPHONE DATA COST, BY MONTH

Thousand Syrian Pounds



SMEB CELLPHONE DATA COST

Sub-districts & Communities, Syrian Pounds



NORTHWEST SYRIA - SMEB COOKING FUEL

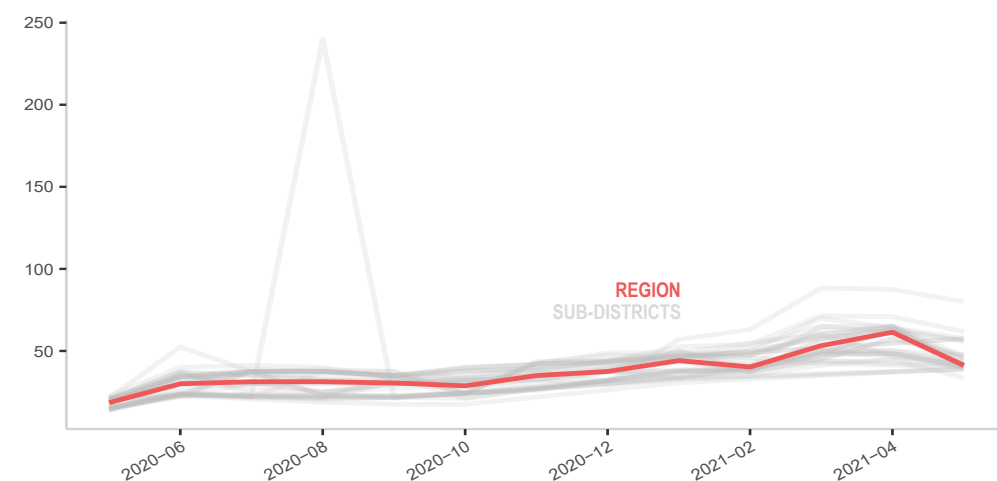
MEDIAN SMEB COOKING FUEL PRICE

Kerosene 25L and LPG 20L, Syrian Pounds

| Sub-district | SMEB Cooking Fuel | One month change | Six month change |
|------------------------|-------------------|------------------|------------------|
| Northwest Syria | 41,250 | -33% | 18% |
| Afrin** | 39,375 | NA | NA |
| Agthrin | 44,500 | -29% | 27% |
| Al Bab | 46,875 | -28% | 44% |
| Ariha* | 43,750 | -9% | 68% |
| Armanaz | 61,750 | -13% | 56% |
| Ar-Ra'ee | 33,750 | -24% | 4% |
| Atareb** | 56,525 | -8% | 54% |
| A'zaz | 40,625 | -10% | 35% |
| Badama* | 40,000 | -38% | -4% |
| Bennsh* | 41,000 | -36% | 51% |
| Bulbul* | 40,500 | NA | -3% |
| Dana | 57,813 | -10% | 50% |
| Daret Azza* | 41,250 | -16% | 55% |
| Darkosh* | 40,625 | -16% | 48% |
| Ghandorah* | 46,250 | -20% | 32% |
| Harim* | 40,250 | -36% | -5% |

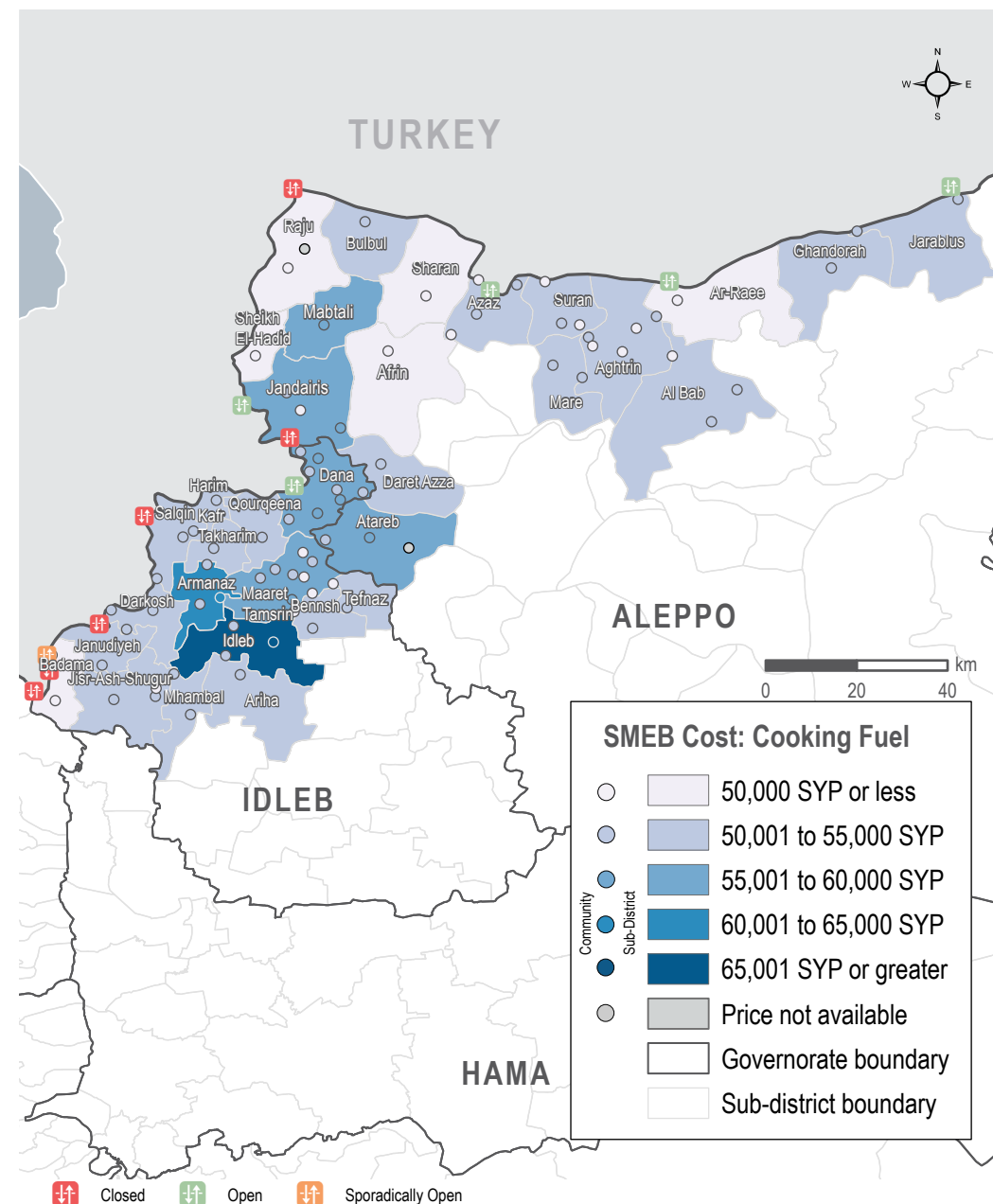
MEDIAN SMEB COOKING FUEL COSTS, BY MONTH

Thousand Syrian Pounds



SMEB COOKING FUEL COST

Sub-districts & Communities, Syrian Pounds



NORTHWEST SYRIA - TRANSPORT FUEL

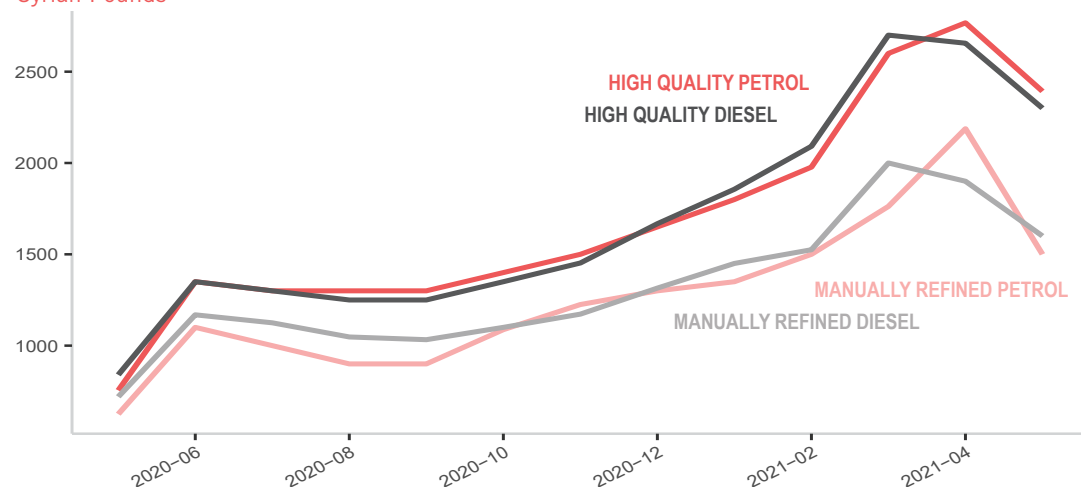
MEDIAN TRANSPORT FUEL PRICE

Diesel and Petrol, 1L (High Quality and Manually Refined), Syrian Pounds

| Sub-district | Transport Fuel | One month change | Six month change | Sub-district | Transport Fuel | One month change | Six month change |
|------------------------|----------------|------------------|------------------|-----------------|----------------|------------------|------------------|
| Northwest Syria | 2,083 | -14% | 52% | Idleb | 2,195 | -9% | 56% |
| Afrin** | 1,933 | NA | NA | Jandairis | 2,025 | NA | 46% |
| Agthrin | 1,768 | -21% | 43% | Janudiyeh | 2,083 | -17% | 45% |
| Al Bab | 1,828 | -21% | 44% | Jarablus | 1,950 | -21% | 47% |
| Ariha* | 2,400 | -12% | 67% | Jisr-Ash-Shugur | 2,158 | -12% | 56% |
| Armanaz | 2,155 | -14% | 53% | Kafr Takharim | 2,053 | -14% | 52% |
| Ar-Ra'ee | 1,794 | -19% | 41% | Maaret Tamsrin | 2,132 | -14% | 49% |
| Atareb | 2,018 | -4% | 48% | Ma'btali* | 2,300 | NA | NA |
| A'zaz | 1,863 | -18% | 60% | Mare' | 1,938 | -18% | 42% |
| Badama | 2,133 | -12% | 48% | Mhambal | 2,154 | -15% | 54% |
| Bennsh | 2,150 | -10% | 56% | Qourqeena | 2,125 | -14% | 56% |
| Bulbul* | 1,650 | NA | 32% | Raju | 2,042 | NA | 53% |
| Dana | 2,117 | -14% | 50% | Salqin | 2,128 | -10% | 53% |
| Daret Azza | 2,072 | -16% | 45% | Sharan | 2,083 | NA | 37% |
| Darkosh | 2,113 | -15% | 54% | Sheikh El-Hadid | 2,000 | NA | 54% |
| Ghandorah | 1,925 | -21% | 45% | Suran | 1,838 | -21% | 52% |
| Harim | 2,100 | -15% | 47% | Teftnaz | 2,083 | -11% | 55% |

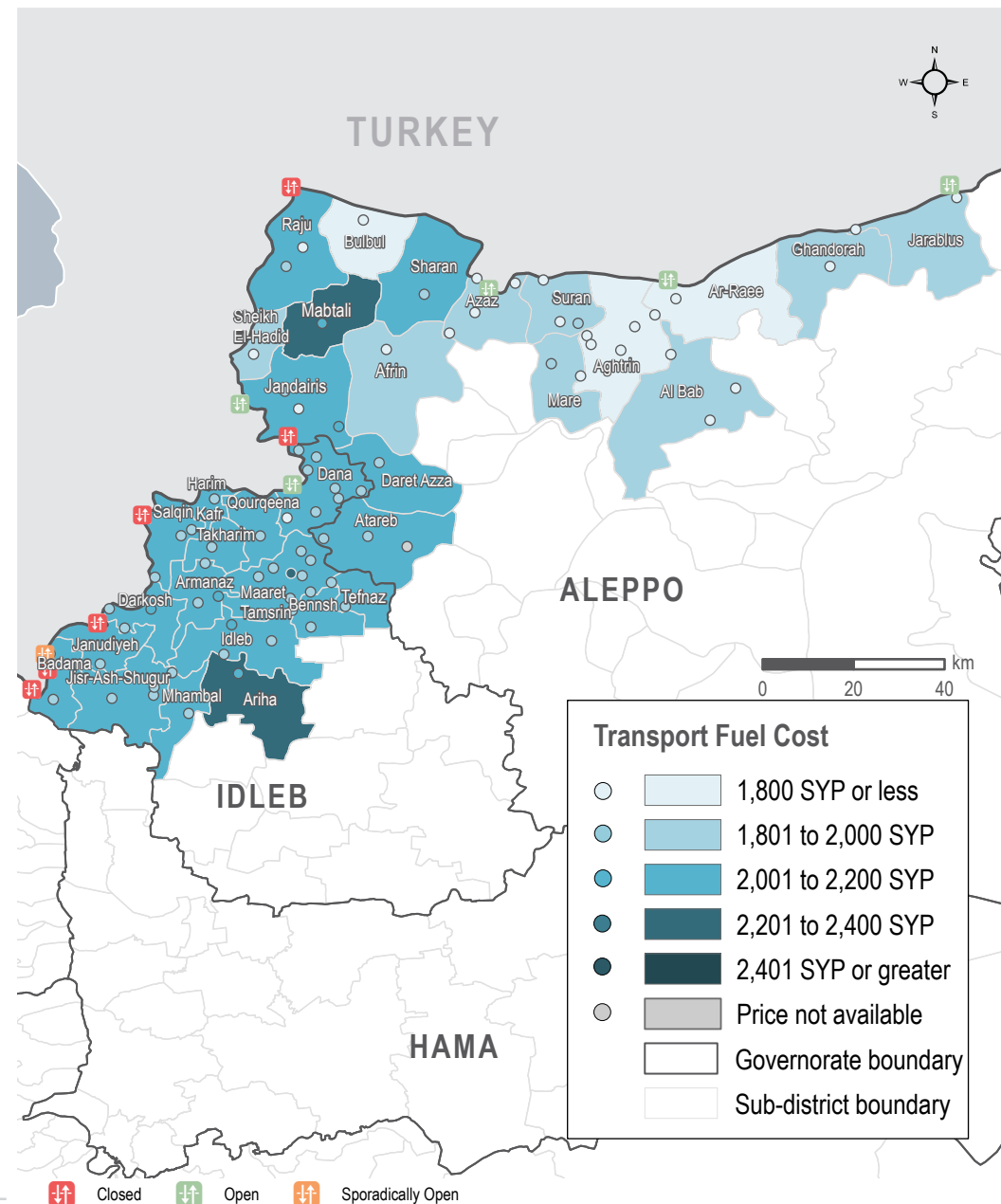
MEDIAN TRANSPORT FUEL COSTS, BY MONTH & TYPE

Syrian Pounds



TRANSPORT FUEL COST

Sub-districts & Communities, Syrian Pounds

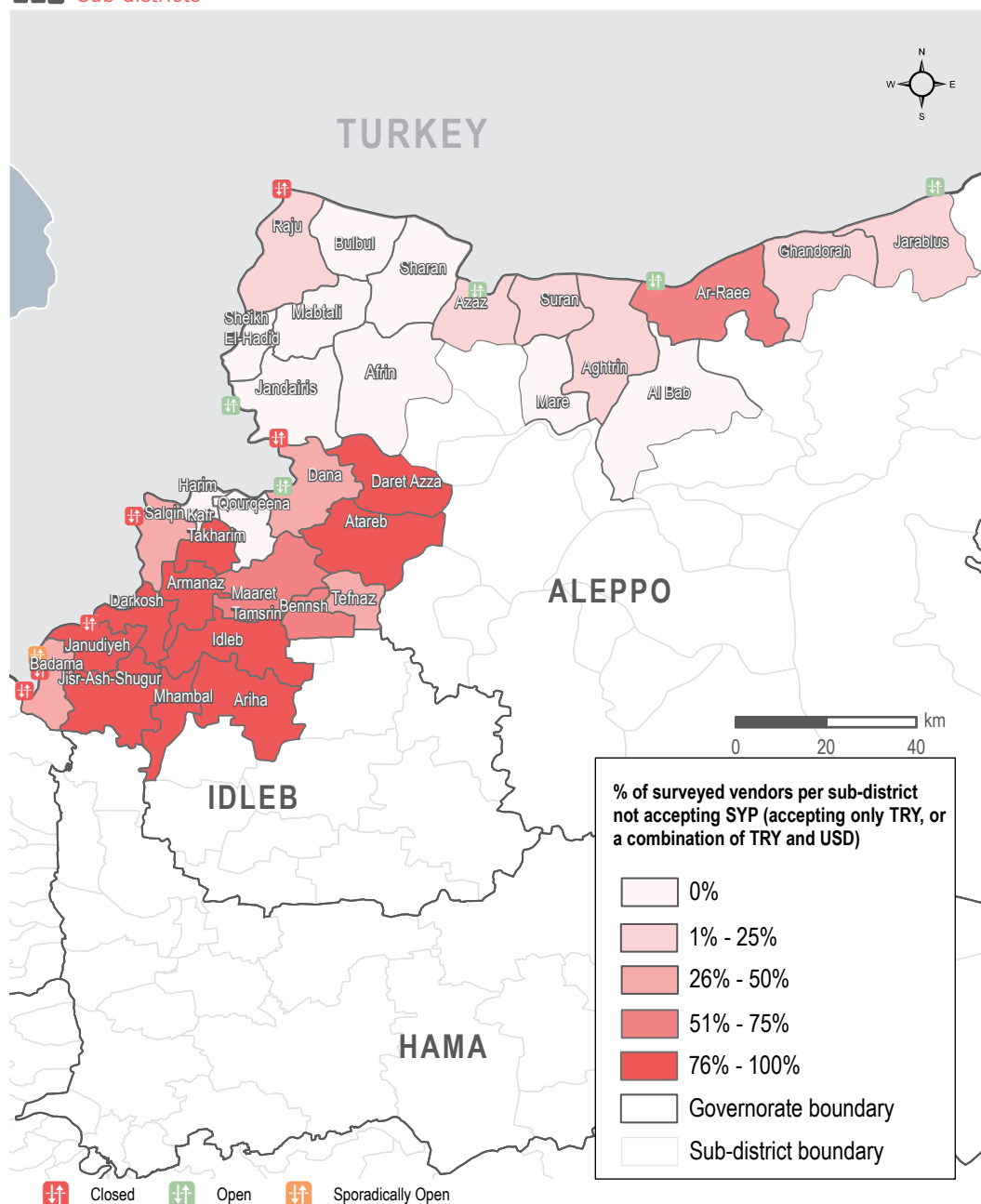


NORTHWEST SYRIA - MARKET FUNCTIONALITY



SURVEYED VENDORS NOT ACCEPTING SYRIAN POUNDS

Sub-districts



MARKET FUNCTIONALITY

For a wider overview of the Syrian market context please see the [Humanitarian Needs Overview 2021](#)

Total surveyed vendors: 2,183

Surveyed vendors reported shop closure: 3 shops = 0.1% of all surveyed shops

All 3 of these shops were in Idleb

One month change: **decrease of 0.4 percentage points (pp)**



SUPPLY CHALLENGES (SEE FIGURE 1)

Total surveyed vendors: 2,038

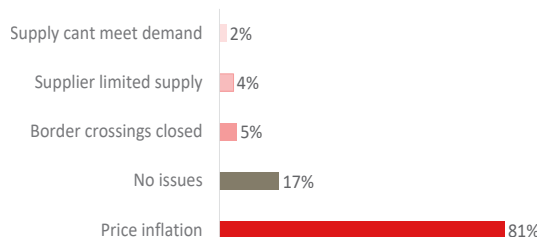
% of vendors who reported facing supply challenges: 83%

One month change: **no change (0%)**

Most Reported Supply Challenge: Price inflation 81%

One month change: **no change (0%)**

Figure 1: Most commonly reported supply challenges by all surveyed vendors (2,038 respondents)



RESTOCKING (SEE FIGURE 2)

Number of surveyed vendors who were asked if they would be unable to restock if they were to run out of supplies: 2,176

Surveyed vendors reporting that they would be unable to restock if they were to run out of supplies: 4 shops / 0.2%

One month change: **increase of 0.2 pp**

Surveyed vendors were asked after how many days they would hypothetically run out of stock if supplies were to be cut:

Less than 3 days: 44%

One month change: **increase of 3%**

Across shop types, surveyed vegetable vendors (80%), water trucking vendors (75%) and butchers (67%) most commonly reported that they would run out in less than 3 days if unable to restock.

Notably, 77% of water trucking vendors in Idleb and 72% of water trucking vendors in Aleppo reported that they would run out of supply in less than 3 days if supply lines were cut.

Figure 2: Reported number of days before all types of vendors would hypothetically run out of stock, if supply lines were to be cut (2,176 respondents)



AVAILABILITY OF USD BANKNOTES

Informal currency exchange vendors were asked about their stock levels for USD banknotes of different denominations.

Surveyed currency Vendors: 226

Surveyed vendors reporting having limited stock of one or more USD denomination: 96%

One month change: **no change (0%)**

The majority of surveyed vendors reported having a limited stock of all denominations of USD banknotes less than 100 USD. See the [May 2021 dataset](#) for further currency data.



CURRENCIES ACCEPTED

Aleppo: vendors most commonly reported selling items in both SYP and TRY (66%), and least commonly in SYP only (5%).

Idleb: vendors in Idleb most commonly reported selling items in TRY only (50%), and least commonly in SYP only (0%) (see map left, and below chart).

| Currencies Accepted | TRY & SYP only | TRY only | TRY & USD | TRY, SYP & USD | SYP not accepted | |
|---------------------|----------------|----------|-----------|----------------|------------------|-----|
| Northwest Syria | 5% | 34% | 48% | 8% | 6% | 42% |
| Aleppo governorate | 11% | 12% | 66% | 3% | 8% | 15% |
| Idleb governorate | 0% | 50% | 35% | 10% | 5% | 60% |

NORTHWEST SYRIA - COVID-19

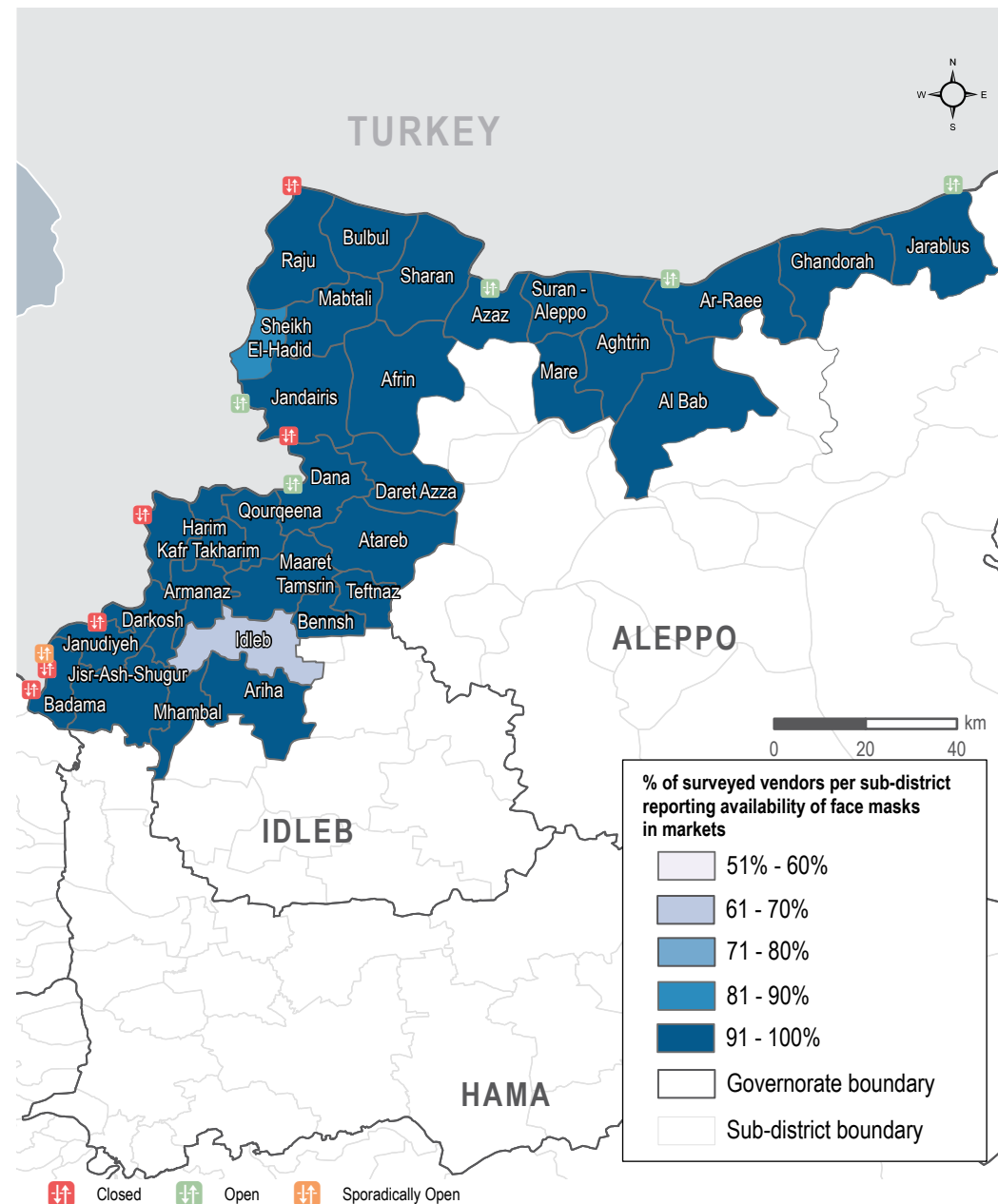


MEDIAN PRICE OF COVID-19 ITEMS Syrian Pounds

| Sub-district | Face mask (1 piece) | Plastic gloves (box of 100) | Sterile alcohol (1 litre) | Hand sanitiser (500 ml) | Bottled bleach (1 litre) | Trash bags (roll of 30) |
|------------------------|------------------------|--------------------------------|------------------------------|-------------------------------|--------------------------------|----------------------------|
| Northwest Syria | 365 | 21,500 | 8,900 | 3,500 | 1,450 | 3,000 |
| A'zaz | 365 | 23,650 | 9,000 | 2,500 | 2,000 | 2,700 |
| Afrin | 500 | 18,000 | 10,000 | 7,500 | 2,500 | 3,500 |
| Aghtrín | 350 | 21,300 | 8,000 | 3,400 | 1,500 | 2,500 |
| Al Bab | 300 | 24,000 | 9,000 | 2,700 | 1,825 | 3,700 |
| Ar-Ra'ee | 400 | 21,400 | 9,000 | 3,070 | 1,800 | 2,500 |
| Ariha | 370 | 19,700 | NA | NA | 1,900 | NA |
| Armanaz | 378 | 22,000 | 9,100 | 3,800 | 1,600 | 3,375 |
| Atareb | 350 | 15,250 | 7,625 | 6,100 | 1,830 | 3,000 |
| Badama | 400 | 21,000 | 10,000 | 4,000 | 1,400 | 3,750 |
| Bennsh | 250 | 20,000 | 10,750 | 1,500 | 1,200 | 4,900 |
| Bulbul | 275 | 21,800 | 5,000 | 3,400 | 1,250 | 2,800 |
| Dana | 350 | 21,000 | 9,375 | 3,450 | 1,400 | 3,300 |
| Daret Azza | 400 | 23,750 | 7,500 | 3,500 | 1,600 | 2,800 |
| Darkosh | 380 | 21,500 | 15,000 | 5,700 | 1,500 | 3,700 |
| Ghandorah | 300 | 20,000 | 7,200 | 3,300 | 1,500 | 1,980 |
| Harim | 300 | 21,800 | 5,200 | 3,100 | 1,300 | 2,950 |
| Idleb | 400 | 22,050 | 8,800 | 5,100 | 1,400 | 3,200 |
| Jandairis | 400 | 22,500 | 6,000 | 3,500 | 1,450 | 3,200 |
| Janudiyeh | 250 | 21,700 | 5,000 | 3,500 | 1,325* | 3,000* |
| Jarablus | 300 | 16,800 | 8,750 | 5,294 | 1,600 | 2,220 |
| Jisr-Ash-Shugur | 300 | 21,700 | 9,000 | 5,200 | 1,330 | 3,200 |
| Kafr Takharim | 350 | 17,200 | 8,600 | 3,600 | 1,300 | 3,000 |
| Ma'tali | 500* | 24,000* | 9,500* | 5,500* | 1,100 | 3,000* |
| Maaret Tamsrin | 350 | 22,000 | 6,000 | 4,000 | 1,300 | 3,000 |
| Mare' | 400 | 25,000 | 6,200 | 2,500 | 1,500 | 3,000 |
| Mhambal | 500 | 30,000 | 17,000 | 5,950 | 1,450 | 2,200 |
| Qourqeena | 325 | 21,000 | 4,550 | 3,600 | 1,400 | 2,975 |
| Raju | 425 | 19,250 | 10,750 | 3,450 | 1,225 | NA |
| Salqin | 400 | 21,500 | 10,500 | 4,000 | 1,800 | 3,800 |
| Sharan | 400* | 21,500* | 5,000* | 3,500* | 1,300* | 3,800* |
| Sheikh El-Hadid | 375* | 22,500* | 5,000* | 3,400* | 1,300 | 3,900 |
| Suran | 300 | 24,000 | 9,000 | 2,500 | 1,890 | 3,388 |
| Teftnaz | 200 | 19,850 | 10,750 | 1,450 | 1,150 | 4,900 |



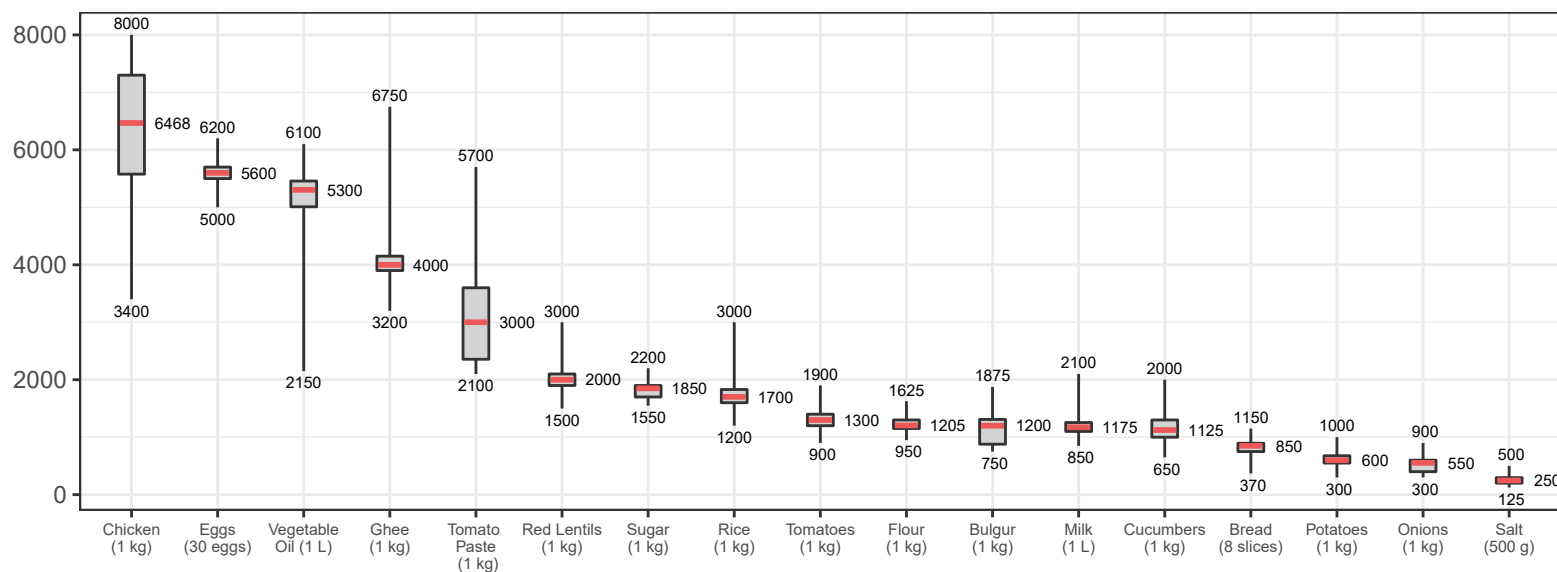
AVAILABILITY OF FACE MASKS Sub-districts



NORTHWEST SYRIA - DISTRIBUTION OF PRICES

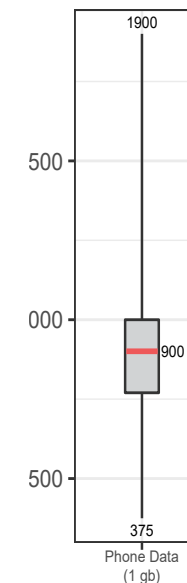
ASSESSED FOOD ITEMS

Syrian Pounds



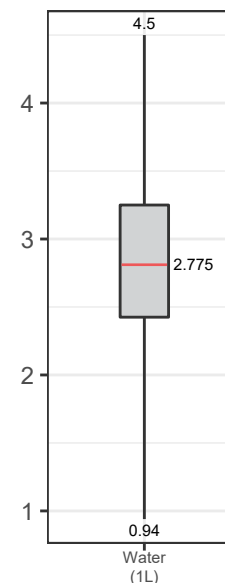
CELLPHONE DATA

Syrian Pounds



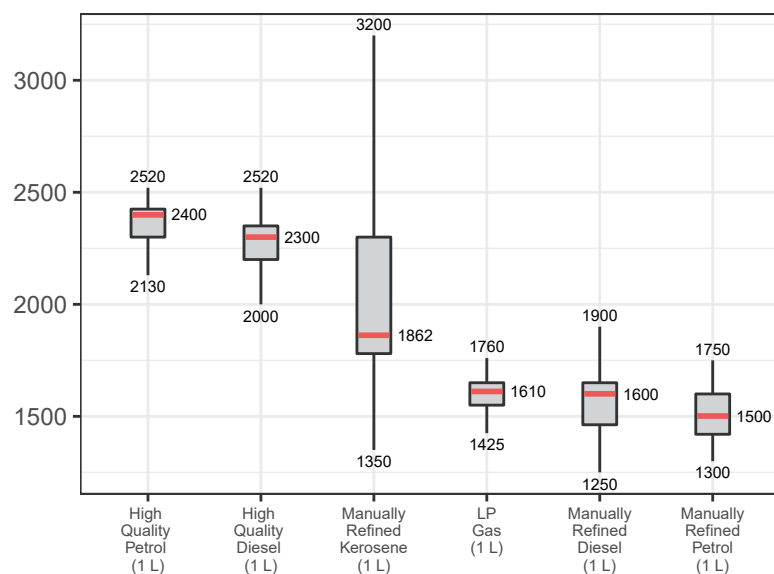
WATER TRUCKING

Syrian Pounds



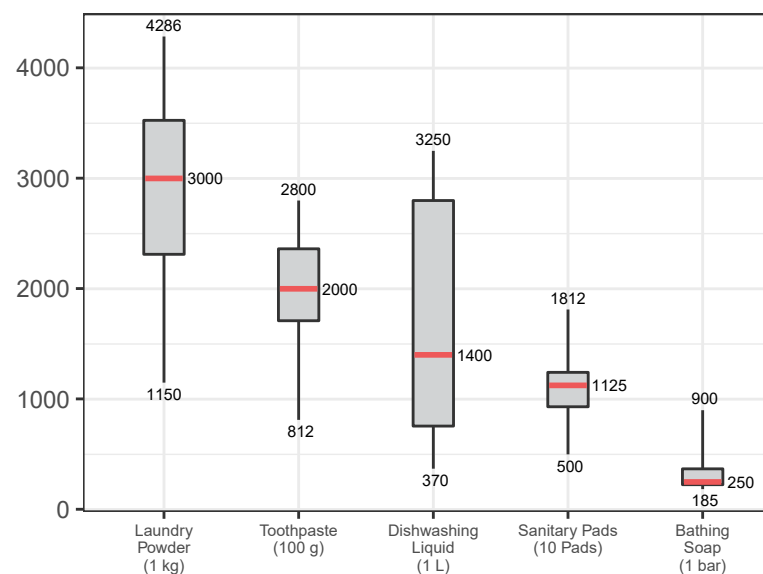
ASSESSED FUEL ITEMS

Syrian Pounds

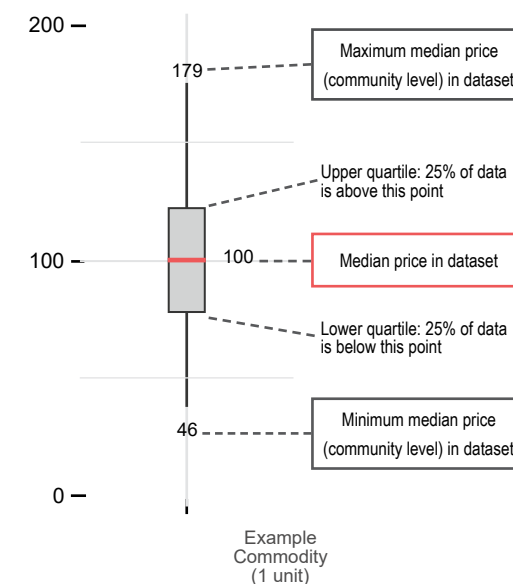


ASSESSED HYGIENE ITEMS

Syrian Pounds



READING BOXPLOTS



METHODOLOGY

In order to be included in the Syria Market Monitoring Exercise, markets must be permanent in nature, large enough to support at least two wholesalers, and diverse enough to provide a sufficient variety of goods and commodities. Additionally, the shops surveyed within each market must be housed in permanent structures and must sell certain items to be eligible for inclusion. Participating organisations train their enumerators on the Market Monitoring methodology and data collection tools using standard training materials developed by REACH. Each enumerator aims to assess three to five shops of each type in the main market in their assigned community/ neighbourhood, using surveys to collect information about the cheapest prices of each item and whether there are any barriers in the supply chain. In sub-districts where direct surveying by enumerators is not possible, data collection is conducted remotely through key informants such as shop owners, suppliers and consumers. A survey form is deployed on KoBo each month to capture price and stock information from different types of establishments, including grocery stores, fuel traders, currency exchange shops, water trucking services and mobile phone shops, among others. Nearly all participating partners submit their data to these KoBo forms, using the KoBoCollect Android app to upload data. A small number of partners, by prior permission, collect data using fully harmonised data collection tools deployed on other platforms, then submit their raw data to REACH for standardisation, compilation and cleaning.

Following data collection, REACH compiles and cleans all partners' data, normalising prices and cross-checking outliers. The cleaned data is then analysed by SMEB costs, components of the SMEB, and by commodities. These trends are observed at the sub-district-level and, when possible, at the community-level. Prices are divided into quartiles and boxplots are created

to assist CWG members in understanding the distribution of prices across the northeast and northwest of Syria. To illustrate local variations in prices and availability, REACH uses the collected data to map the price of the SMEB in each sub-district and adds illustrations of surrounding border crossings, with data sourced from the United Nations Office for the Coordination of Humanitarian Affairs (OCHA). In addition, each SMEB component costs and transport fuel prices are graphed to visualise trends over time.

The cleaned datasets are available on the [Humanitarian Data Exchange](#) website and the [REACH Resource Centre](#) and are distributed to all participating partners, as well as to interested clusters and the broader humanitarian community.

Calculating 'median cheapest price'

The regional figures are calculated by taking the median of the minimum-reported prices of a region's sub-districts. In turn, the sub-district medians are calculated using the Market Monitoring base-data.

Calculating Survival Minimum Expenditure Basket (SMEB) costs

The cost of a SMEB is calculated for each assessed sub-district by calculating the median cheapest price of each SMEB commodity in that sub-district, then multiplying these medians by the number of units that an average Syrian household requires to purchase in a month. The composition of the SMEB can be found on [page 2](#). SMEB vegetables include potatoes, tomatoes, onions, and cucumbers.

Calculating price trends over time

One month and six-month price changes and trends in this factsheet are calculated only with the comparable assessed communities of a sub-district with consistent coverage across months. On the other hand, in the dataset, medians are calculated taking all

assessed communities for the current month in consideration. Therefore, prices and percentage changes within the tables of this factsheet may slightly differ from the current month's dataset medians. In the narrative, both regional median SMEB values are shared; the SMEB value including all assessed communities that specific month, and the SMEB value only taking in consideration communities with consistent coverage since the previous month.

Changes to coverage

Given security and access constraints in the south of Syria, data collection has been unable to take place since July 2018. Escalation of conflict in October 2019 has resulted in limited coverage in northeast Syria in the months following the escalation.

Challenges and limitations

As the Syria Market Monitoring Exercise currently includes 26 partners based in 2 hubs, achieving a consistent approach is inherently challenging. Participating organisations are therefore requested to adopt harmonised data collection methodologies and tools to ensure that the data uploaded is as accurate as possible. Since this exercise collects data directly from vendors and relies on partner organisations for its wide coverage, Market Monitoring may sporadically lose coverage temporarily or for longer periods of time due to challenges in accessing locations or loss in the shared data collection capacity of the project. This impacts the ability to report on trends, as can be seen in the line graphs and 'NA' values in the tables.

ABOUT REACH

REACH Initiative facilitates the development of information tools and products that enhance the capacity of aid actors to make evidence-based decisions in emergency, recovery and development contexts. The methodologies used by REACH include primary data collection and in-depth analysis, and all activities are conducted through inter-agency aid coordination mechanisms. REACH is a joint initiative of IMPACT Initiatives, ACTED and the United Nations Institute for Training and Research - Operational Satellite Applications Programme (UNITAR-UNOSAT). For more information please visit our website:

www.reach-initiative.org. You can contact us directly at: geneva@reach-initiative.org and follow us on Twitter [@REACH_info](https://twitter.com/REACH_info).

ABOUT THE CASH WORKING GROUP

The Cash Working Group (CWG) was established in May 2014 to analyse the impact of the ongoing conflict on markets in Syria and guide the implementation of humanitarian cash and voucher programmes within those markets. REACH and the CWG have been partners on the Syria Market Monitoring Exercise since early 2015.

About REACH's COVID-19 response

As an initiative deployed in many vulnerable and crisis-affected countries, REACH is deeply concerned by the devastating impact the COVID-19 pandemic may have on the millions of affected people we seek to serve. REACH is currently working with Cash Working Groups and partners to scale up its programming in response to this pandemic, with the goal of identifying practical ways to inform humanitarian responses in the countries where we operate. COVID-19-relevant market monitoring and market assessments are a key area where REACH aims to leverage its existing expertise to help humanitarian actors understand the impact of changing restrictions on markets and trade. Updates regarding REACH's response to COVID-19 can be found in a [devoted thread](#) on the REACH website. Contact geneva@impact-initiatives.org for further information.