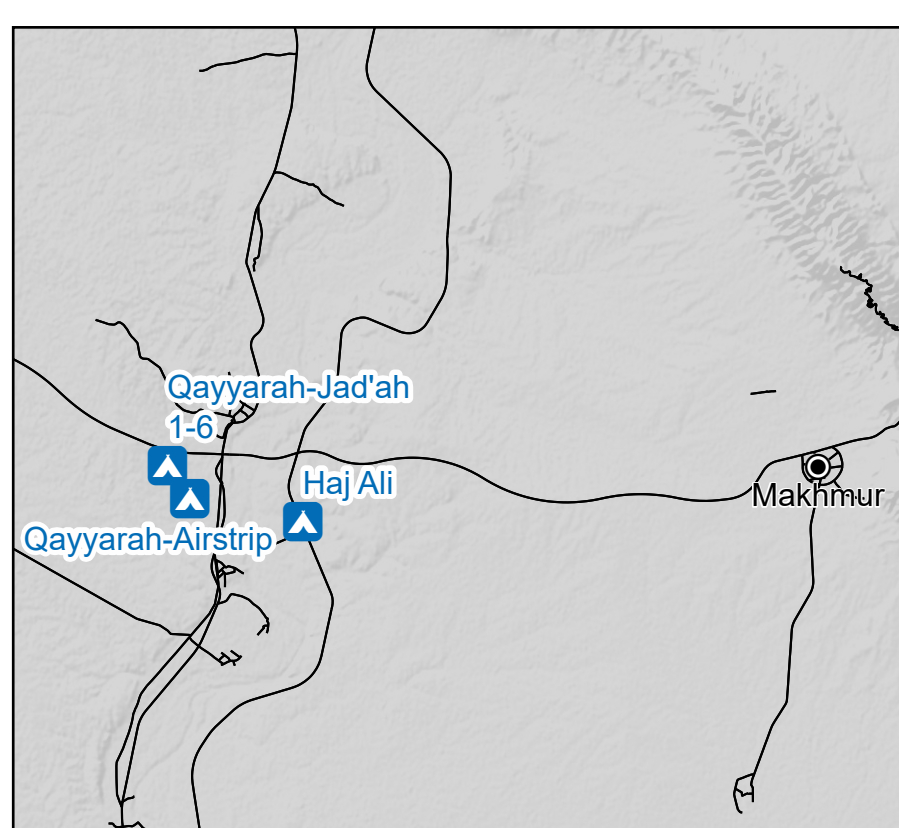
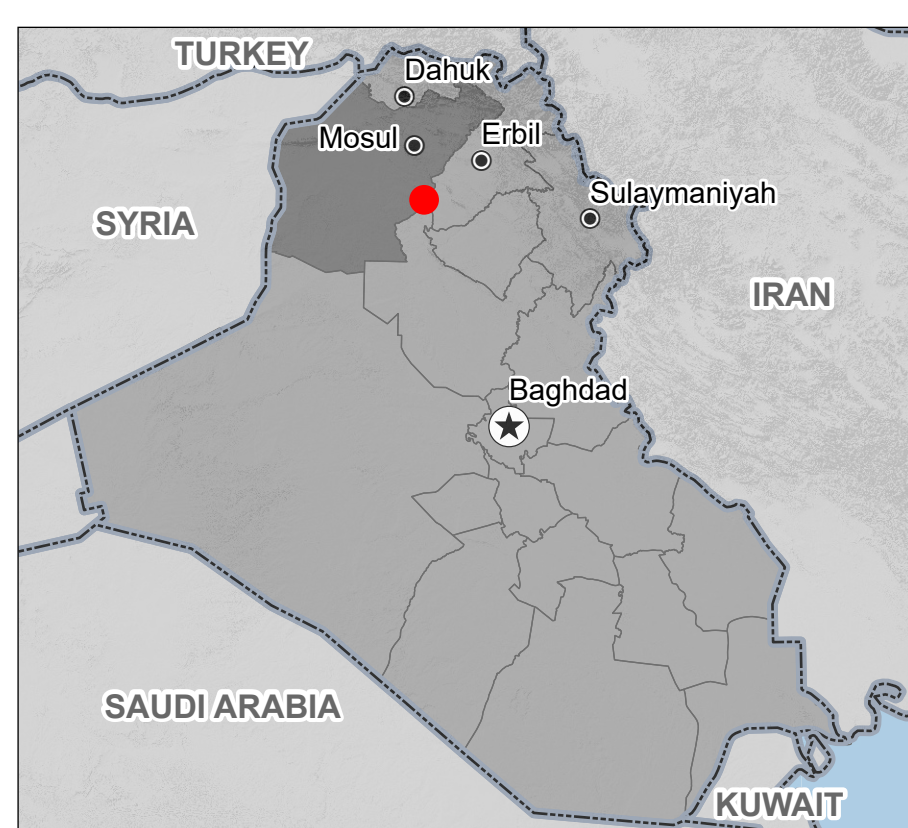
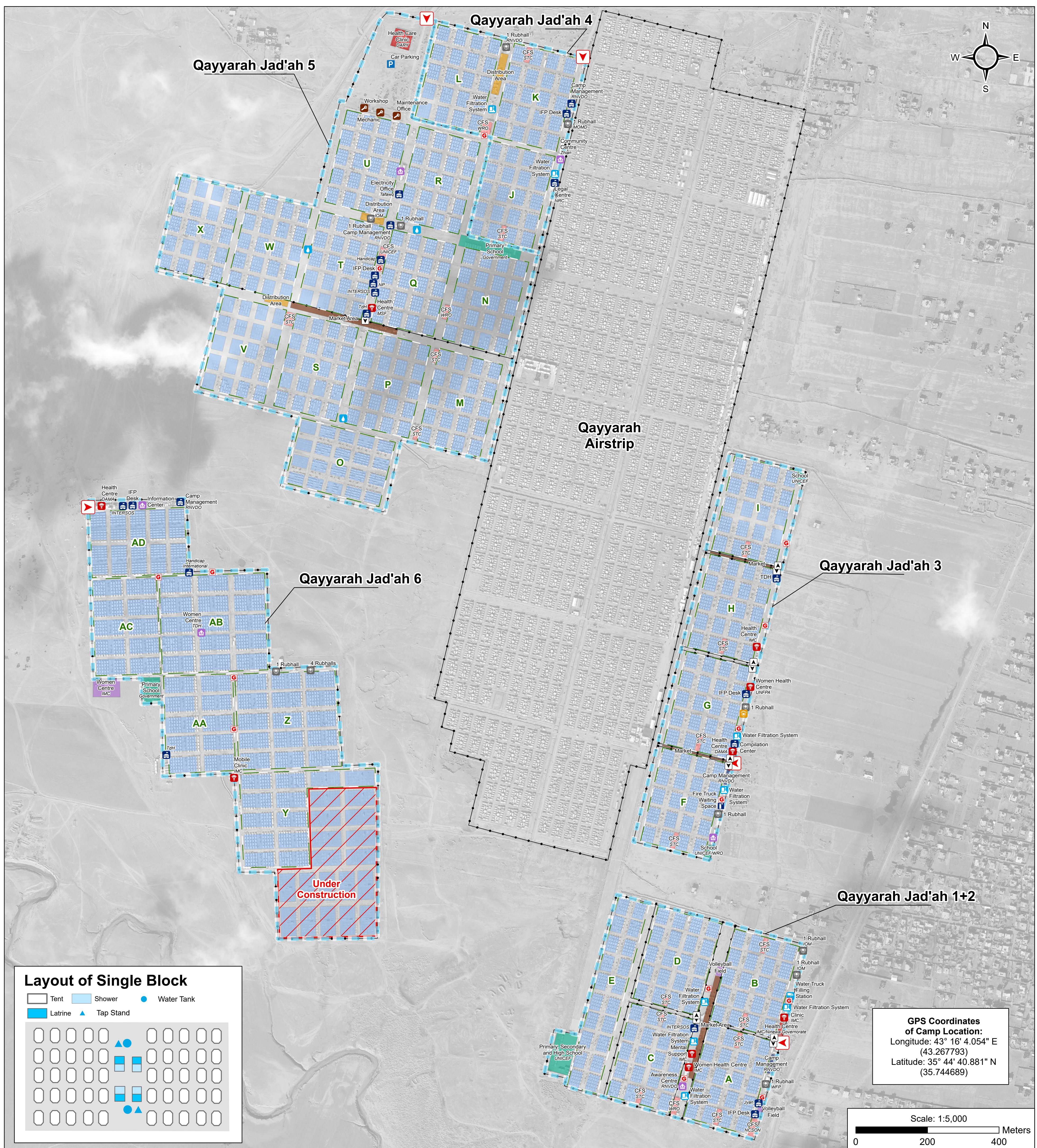


# IRAQ - Ninewa - Qayyarah Jad'ah Camp

For Humanitarian Purposes Only  
Production date: 13 February 2019



## General Infrastructure - Updated 5 February 2019



### Camp Infrastructure

- |                    |                      |                     |
|--------------------|----------------------|---------------------|
| Camp Delineation   | Child Friendly Space | Water Filter        |
| Fence              | Community Area       | Water Tank          |
| Sector             | Service              | Water Truck         |
| Block              | Entrance             | Filling Station     |
| Under Construction | Sector Gate          | Generator           |
| Health             | Health               | Maintenance Service |
| Office             | Office               | Storage             |
| Distribution       | Distribution         | Parking             |
| Education          | Community Centre     | Fire Truck          |

Thematic Data: 5/02/2019 – REACH  
Administrative boundaries: GADM, OCHA  
Satellite Imagery: WorldView-1 from 10/01/2019  
Copyright: ©2019, DigitalGlobe, Inc  
Source: US Department of State, Humanitarian Information Unit, NextView License  
Coordinate System: WGS 1984 UTM Zone 38N  
Contact : [iraq@reach-initiative.org](mailto:iraq@reach-initiative.org)  
File: IRQ\_Map\_IDP\_QayyarahJad'ah\_13Feb2019  
Note: Data, designations and boundaries contained on this map are not warranted to be error-free and do not imply acceptance by the REACH partners, associated, donors mentioned on this map.