

SYRIA MARKET MONITORING EXERCISE

Snapshot: 9 - 16 December 2019

Cash-Based Responses
Technical Working Group

REACH Informing
more effective
humanitarian action

INTRODUCTION

To inform humanitarian cash programming, REACH, in partnership with the Cash-Based Responses Technical Working Group (CBR-TWG), conducts monthly Market Monitoring Exercises in northern Syria to assess the availability and prices of 36 basic commodities that are typically sold in markets and consumed by average Syrian households, including food and non-food items, water, fuel, and cellphone data.

Of these, 18 items comprise the Survival Minimum Expenditure Basket (SMEB; see below), which represents the minimum, culturally adjusted items required to support a 6-person household for a month.

Data was collected this month (between 9-16 December 2019) by ACTED, CARE Shafak, GOAL, REACH, People In Need (PIN), Solidarités International, Violet, and Watan.

The accompanying [data from the month of December](#) is disseminated monthly and is distributed through partners across the humanitarian community.

SURVIVAL MINIMUM EXPENDITURE BASKET (SMEB) CONTENTS

	Item	Quantity	
Food Items	Bread	37 kg	
	Bulgur	15 kg	
	Chicken	6 kg	
	Eggs	6 kg	
	Fresh vegetables	12 kg	
	Ghee/vegetable oil	7 kg/L	
	Red lentils	15 kg	
	Rice	19 kg	
	Salt	1 kg	
	Sugar	5 kg	
	Tomato paste	6 kg	
	Hygiene items	Bathing soap	12 bars
		Laundry/dish soap	3 kg
Sanitary pads		4 packs of 10	
Toothpaste		200 g	
Fuel	Cooking fuel*	25 L	
Water	Water trucking	4500 L	
Telecom	Smartphone data	1 GB	
Other	Float (other costs)**	7.5% total value	

* Kerosene in northern Syria

** Float only applied to observations where prices of all SMEB contents could be collected

KEY DEVELOPMENTS

SMEB cost continued to increase in Syrian Pound (SYP); highest price ever recorded in northwest Syria (NWS)

For the second month in a row, the SMEB cost was the highest ever recorded by the Market Monitoring Exercise. The SMEB cost increased from 74,104 Syrian Pounds (SYP) in November 2019 to 90,380 SYP in December 2019, marking a 22% increase. The month-on-month increase was reportedly due to the continued escalation of conflict across northern Syria coupled with the rapid depreciation of the SYP against foreign currencies. In US Dollar (USD), however, the SMEB cost remained relatively stable at 107 USD, an increase of less than 3% in the course of the last 6 months.

SYP continued to depreciate against the USD

After the continued depreciation of the SYP against the USD throughout 2019, the SYP drastically plummeted

in December, following the recent escalation of conflict across Northern Syria coupled with the economic crisis in Lebanon. [Recently, banks in Lebanon have restricted access to USD](#), which has further limited the availability of USD in Syria, where the demand for foreign currencies is high. Thus, the informal USD/SYP exchange rate in NWS reached a record high of 843 SYP in December 2019, an increase of 23% compared to the previous month. The Turkish Lira (TRY)/SYP informal exchange rate witnessed a similar trend this month; from 120 SYP in November to 145 SYP to the TRY, marking a 21% increase.

Demand for alternative heating and cooking fuel as kerosene prices continue to increase

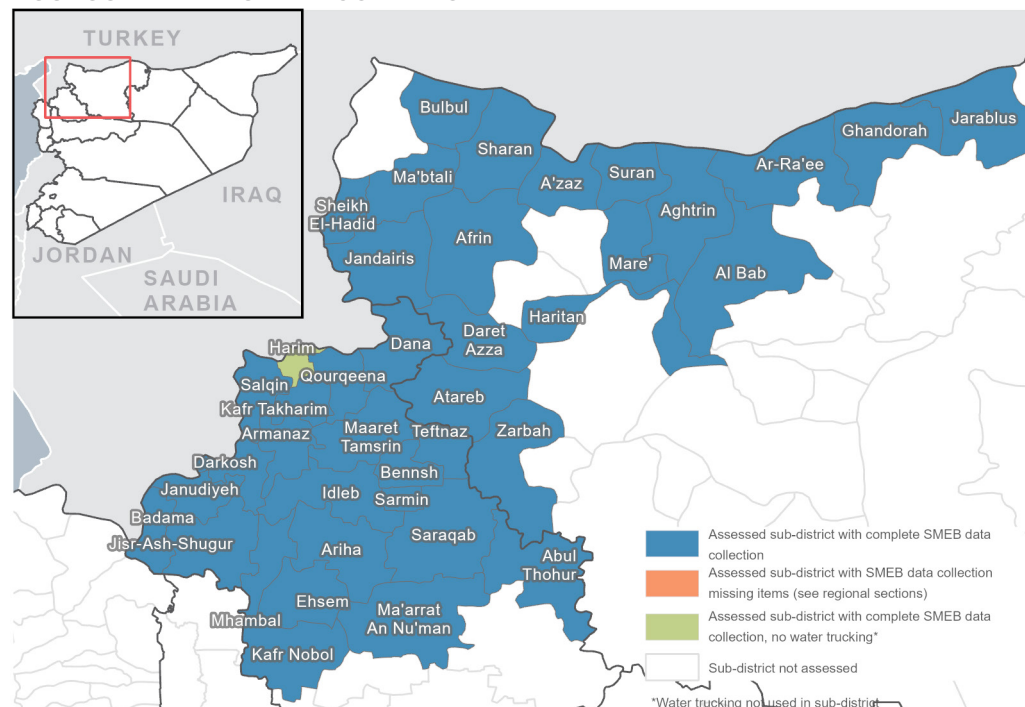
This month, REACH and partners started to monitor four alternative heating items, including coal, firewood, olive residue, and pistachio shells. With the increase

in the price of heating and cooking fuel, such as kerosene, people across Northern Syria are reportedly relying more and more on [these alternative heating and cooking fuels](#). The regional median prices per kilo were recorded at 75 SYP for coal, 85 SYP for firewood, 78 SYP for olive residue and 170 SYP for pistachio shells. Reportedly, these items are more affordable for most people across northern Syria with the quantity being sufficient for market supply. However, market vendor key informants are expecting prices to increase due to high demand during winter months.

December 2019 coverage

This month, REACH and partners covered 40 sub-districts across northwest Syria. In total, 92 markets and 2,889 shops were covered in the December 2019 Market Monitoring Exercise.

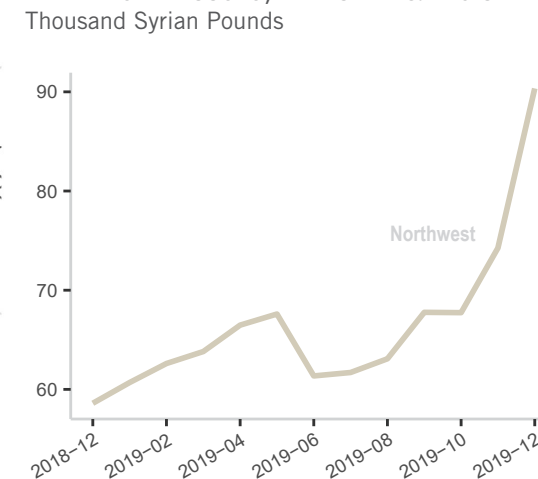
ASSESSED AREAS AND COVERAGE



MEDIAN SMEB COST IN SYP (USD), BY REGION

90,343 SYP (107 USD) | NORTHWEST SYRIA - IDLEB, WESTERN & NORTHERN ALEPPO GOVERNORATES

MEDIAN SMEB COSTS, BY MONTH & REGION



KEY DEVELOPMENTS

90,343 SYP (107 USD) | **NORTHWEST SYRIA - IDLEB, WESTERN & NORTHERN ALEPPO GOVERNORATES**

Winterisation items varied in prices depending on demand and accessible alternatives

Overall, the monitored winterisation items (clothing, carpets, heaters, mattresses, blankets) were reported to be available in most markets across NWS. However, prices of these items varied substantially by sub-district, reportedly depending on the availability of cheaper alternatives (e.g. second-hand items or aid distributions). Full overview of the median prices of winterisation items by sub-district can be [found here](#).

Scarcity of fuel items led to increase in prices

Recent developments in northern Syria have led to supply lines for transport fuel being cut, which in turn has resulted in increased prices of all four monitored transport fuel items (manually refined and high quality diesel and petrol). At the regional level, the median transport fuel price increased by 26% in NWS, from 475 SYP last month to 600 SYP in December. Similarly, the median price of kerosene increased by 49% at the regional level, from 450 SYP last month to 673 SYP per litre this month. According to REACH field teams, market vendor key informants reported that they expected for

fuel prices to increase even further, as fuel stockpiles are emptying, currently with little opportunity to restock.

High cost of transport fuel lead to increased prices of most items across NWS

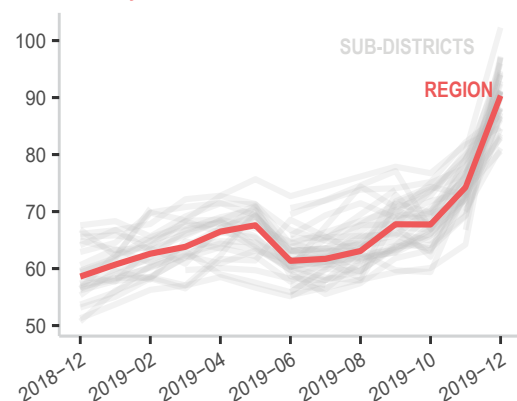
The increase in transport fuel prices affected the prices of most products tracked under the monthly Market Monitoring Exercise. Higher transportation costs and road closures have led to an increase in water trucking prices from 3,218 SYP last month to 3,735 SYP this month, marking an increase of 17%. Imported items—such as fresh vegetables, milk powder, and baby formula—witnessed similar increases due to rising transportation costs.

Increase in flour and bread prices

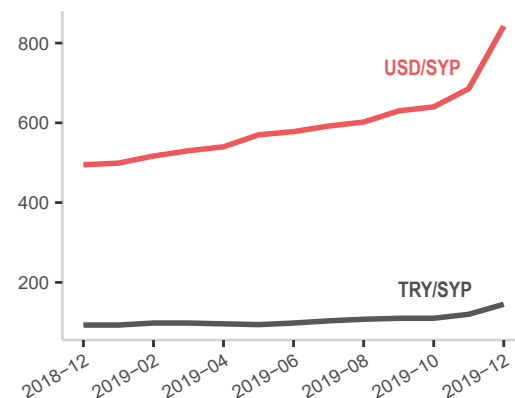
The depreciation of the SYP coupled with a reported decrease in aid distributions containing flour and/or bread have led to an increase in flour prices and consequently, in bread prices. The median flour price per kg increased by 20% from 243 SYP in November to 291 SYP in December 2019. On the other hand the median price of bread (8 pcs.) increased by 15%, from 200 SYP in November to 229 SYP in December 2019.

MEDIAN SMEB COSTS, BY MONTH

Thousand Syrian Pounds



EXCHANGE RATES, BY MONTH & CURRENCY



MEDIAN SMEB COSTS & CHANGES*

Syrian Pounds

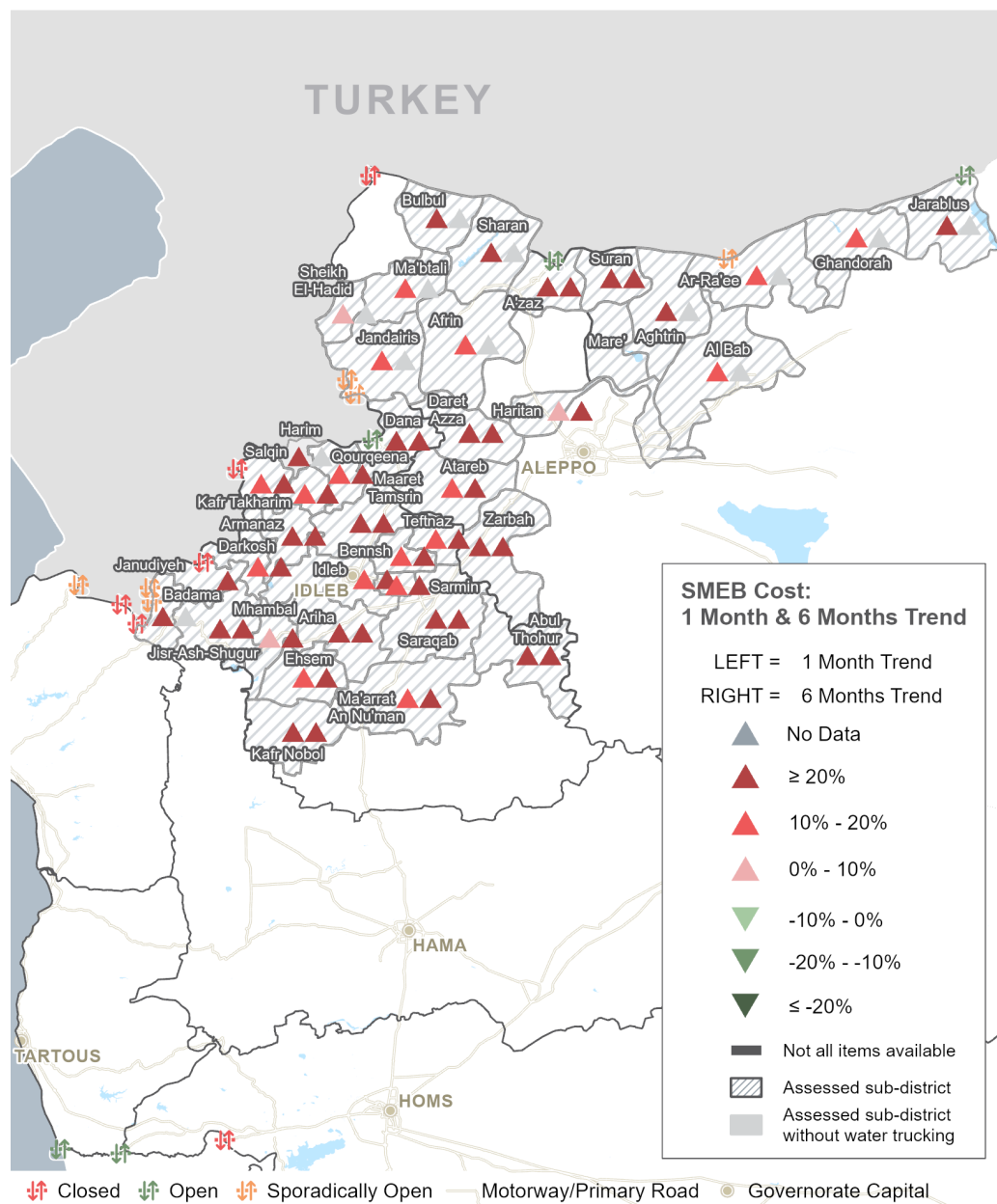
Sub-district	SMEB	One month change	Six month change
Northwest Syria	90,380	22%	46%
Abul Thohur	97,059	45%	72%
Afrin	86,772	20%	NA
Aghtrin	88,980	21%	NA
Al Bab	81,137	16%	NA
Ariha	94,362	36%	54%
Armanaz	93,612	23%	57%
Ar-Ra'ee	86,595	13%	NA
Atareb	88,251	11%	47%
A'zaz	101,936	26%	51%
Badama	90,778	26%	NA
Bennsh	82,892	11%	34%
Bulbul	96,976	51%	NA
Dana	93,732	29%	49%
Daret Azza	95,605	24%	47%
Darkosh	93,032	15%	53%
Ehsem	88,432	16%	43%
Ghandorah	83,655	14%	NA
Harim**	91,469	27%	NA
Haritan	80,586	9%	32%

Sub-district	SMEB	One month change	Six month change
Idleb	83,265	14%	20%
Jandairis	90,574	20%	NA
Janudiyeh	82,284	NA	33%
Jarablus	92,925	21%	NA
Jisr-Ash-Shugur	86,392	22%	40%
Kafr Nobol	91,323	26%	44%
Kafr Takharim	91,048	18%	43%
Maaret Tamsrin	93,251	35%	56%
Ma'arrat An Nu'man	90,676	18%	47%
Ma'btali	86,194	16%	NA
Mare'	90,343	NA	NA
Mhambal	87,583	5%	22%
Qourqeena	84,586	19%	46%
Salqin	94,899	20%	46%
Saraqab	92,276	24%	48%
Sarmin	88,015	10%	43%
Sharan	87,336	26%	NA
Sheikh El-Hadid	84,753	4%	NA
Suran	90,380	23%	42%
Teftnaz	90,747	19%	52%
Zarbah	97,215	34%	75%

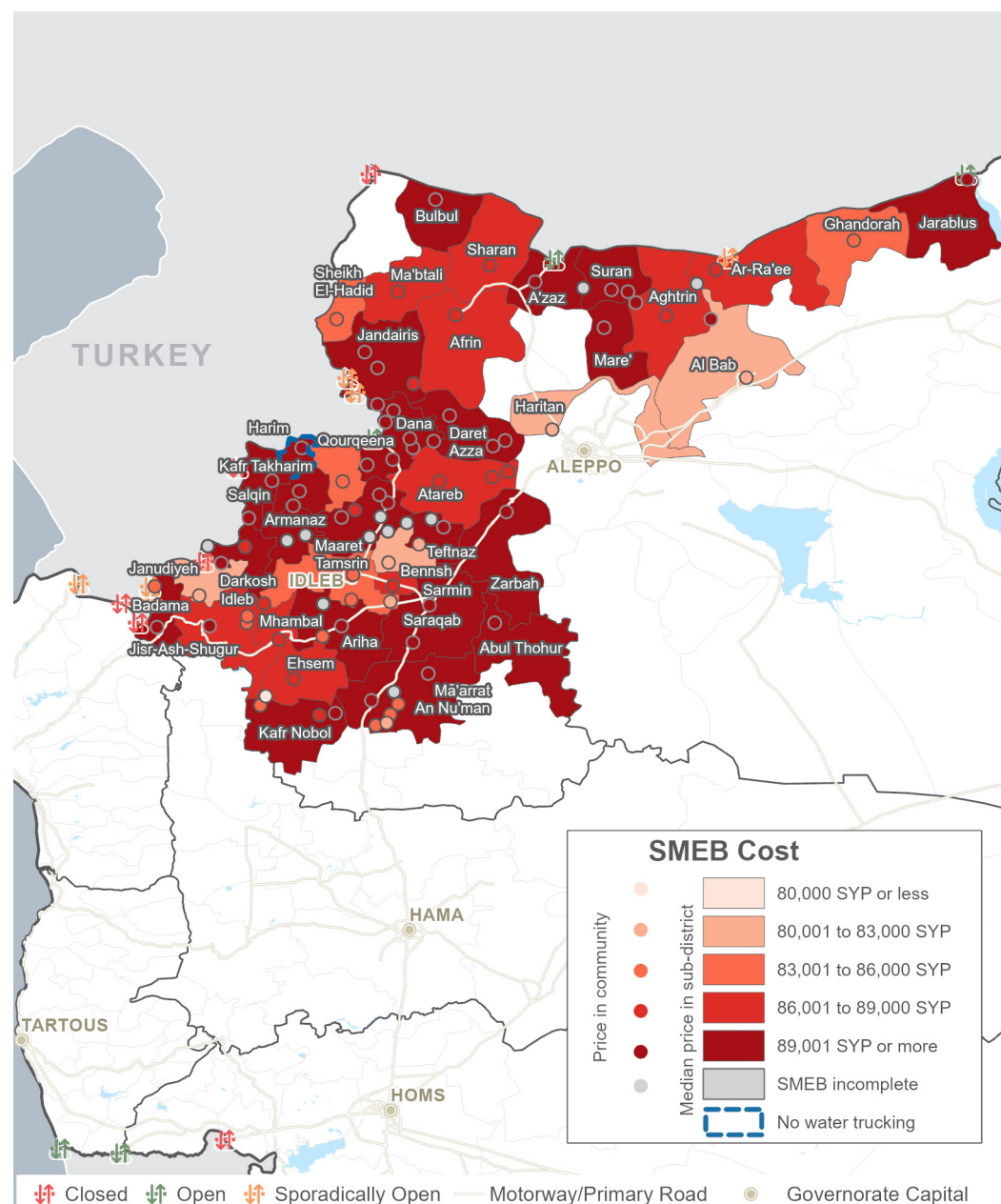
* For price and change calculations, only the communities within a sub-district with consistent coverage across months are included.

** SMEB calculated without water trucking component.

SMEB COST: ONE MONTH & SIX MONTHS TREND



SMEB COST RANGES (SYP), BY SUB-DISTRICTS & COMMUNITIES



NORTHWEST SYRIA - SMEB COST: FOOD ITEMS

Idleb, Western & Northern Aleppo governorates

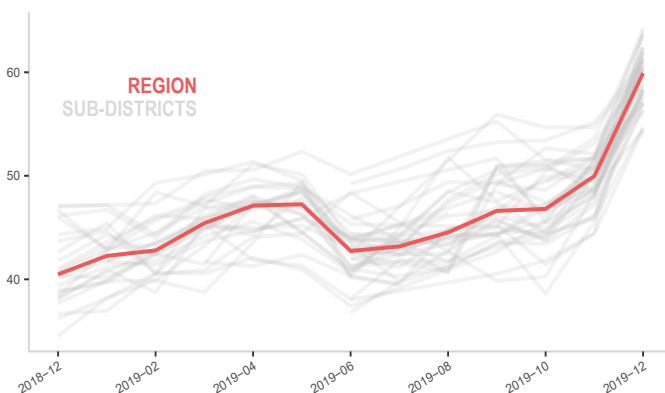
MEDIAN SMEB COST: FOOD ITEMS

See Page 1, Syrian Pounds

Sub-district	SMEB Food	One month change	Six month change	Sub-district	SMEB Food	One month change	Six month change
Northwest Syria	59,730	20%	38%	Idleb	54,694	19%	24%
Abul Thohur	63,985	41%	56%	Jandairis	59,763	12%	NA
Afrin	60,785	27%	NA	Janudiyeh	57,625	NA	28%
Aghtrin	56,931	16%	NA	Jarablus	62,439	21%	NA
Al Bab	54,398	11%	NA	Jisr-Ash-Shugur	54,398	21%	27%
Ariha	61,545	29%	39%	Kafr Nobol	59,130	23%	37%
Armanaz	61,763	20%	49%	Kafr Takharim	62,403	26%	45%
Ar-Ra'ee	61,065	18%	NA	Maaret Tamsrin	60,466	30%	47%
Atareb	63,675	19%	48%	Ma'arrat An Nu'man	58,700	14%	35%
A'zaz	64,314	24%	43%	Ma'btali	57,045	14%	NA
Badama	58,403	21%	34%	Mare'	60,525	11%	NA
Bennsh	57,970	14%	36%	Mhambal	61,832	10%	22%
Bulbul	61,748	39%	NA	Qourqeena	56,385	20%	43%
Dana	61,223	25%	39%	Salqin	61,366	16%	31%
Daret Azza	60,288	20%	38%	Saraqab	59,230	20%	40%
Darkosh	58,441	13%	34%	Sarmin	63,614	23%	43%
Ehsem	57,472	15%	36%	Sharan	54,506	23%	NA
Ghandorah	59,698	24%	NA	Sheikh El-Hadid	57,500	14%	NA
Harim	62,313	24%	NA	Suran	57,738	16%	33%
Haritan	57,189	18%	32%	Teftnaz	58,489	13%	39%
				Zarbah	61,975	30%	56%

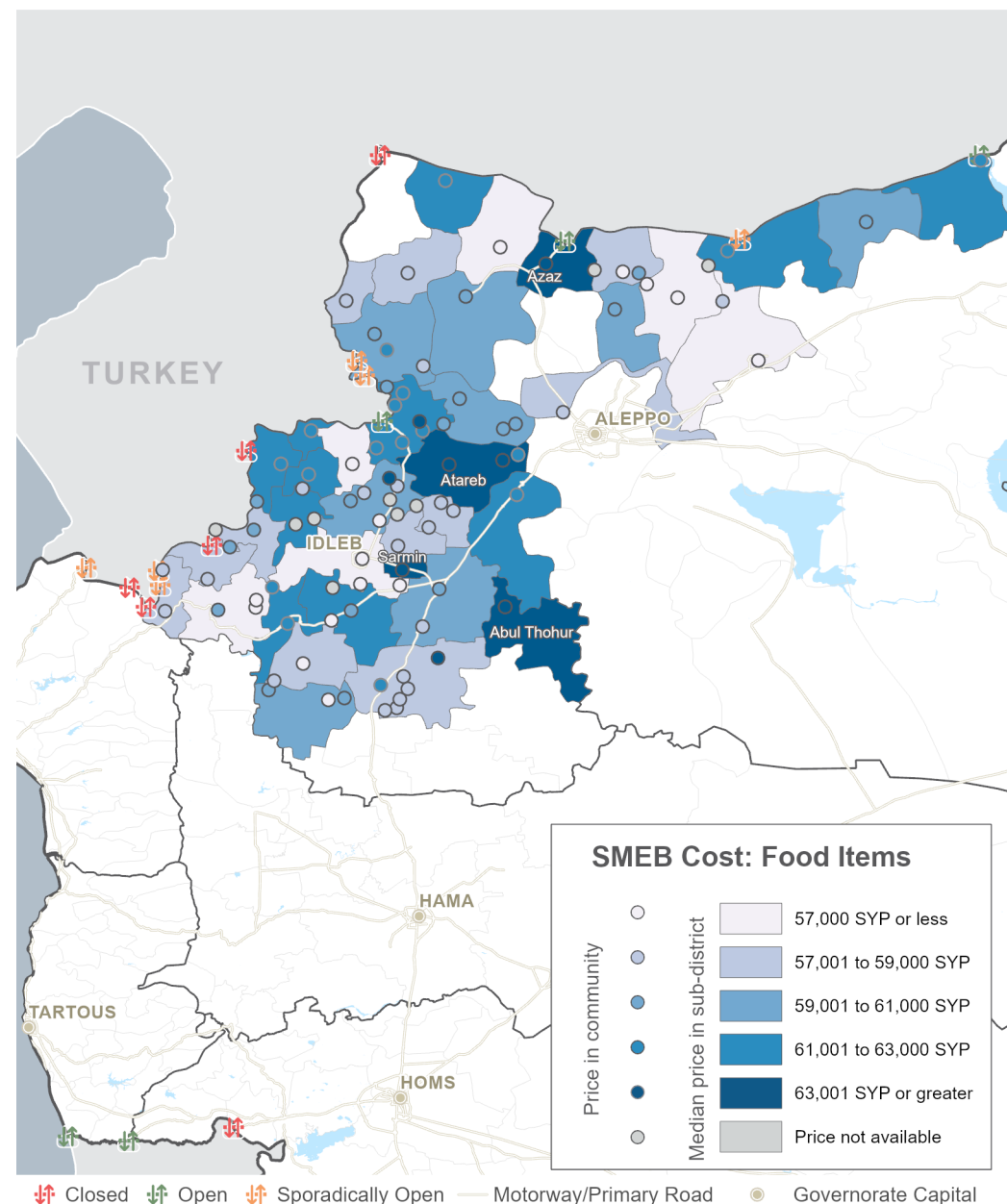
MEDIAN SMEB COST: FOOD ITEMS, BY MONTH

Region (red) and Sub-districts (grey), Thousand Syrian Pounds



SMEB FOOD ITEMS' COST

Sub-districts & Communities, Syrian Pounds



NORTHWEST SYRIA - SMEB COOKING FUEL

Idleb, Western & Northern Aleppo governorates

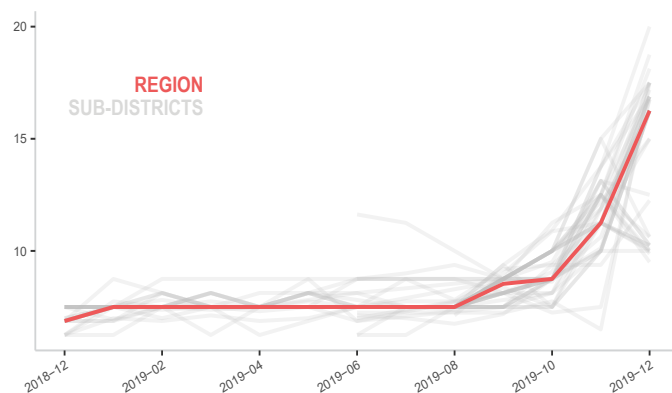
MEDIAN SMEB COOKING FUEL PRICE

Kerosene 25L, Syrian Pounds

Sub-district	SMEB Cooking Fuel	One month change	Six month change	Sub-district	SMEB Cooking Fuel	One month change	Six month change
Northwest Syria	16,250	44%	117%	Idleb	10,000	-20%	-11%
Abul Thohur	16,250	63%	160%	Jandairis	17,188	53%	NA
Afrin	10,000	-11%	NA	Janudiyeh	10,250	-9%	37%
Aghtrin	16,250	37%	NA	Jarablus	15,000	33%	NA
Al Bab	12,250	31%	NA	Jisr-Ash-Shugur	16,250	30%	100%
Ariha	16,406	75%	119%	Kafr Nobol	17,031	51%	113%
Armanaz	16,563	33%	121%	Kafr Takharim	12,500	-5%	67%
Ar-Ra'ee	10,063	-11%	NA	Maaret Tamsrin	16,250	63%	117%
Atareb	10,250	-22%	37%	Ma'arrat An Nu'man	16,875	50%	125%
A'zaz	18,750	50%	150%	Ma'bтали	10,000	0%	NA
Badama	16,250	63%	117%	Mare'	17,500	169%	NA
Bennsh	10,250	-9%	17%	Mhambal	9,875	-21%	10%
Bulbul	16,750	123%	NA	Qourqeena	15,000	23%	100%
Dana	16,500	63%	120%	Salqin	17,500	33%	155%
Daret Azza	18,125	45%	142%	Saraqab	16,250	43%	86%
Darkosh	17,500	17%	133%	Sarmin	10,250	-22%	37%
Ehsem	17,500	40%	115%	Sharan	16,875	35%	NA
Ghandorah	10,625	-15%	NA	Sheikh El-Hadid	10,625	-29%	NA
Harim	16,875	50%	NA	Suran	16,563	54%	121%
Haritan	9,500	-24%	27%	Teftnaz	17,500	56%	133%
				Zarbah	20,000	45%	167%

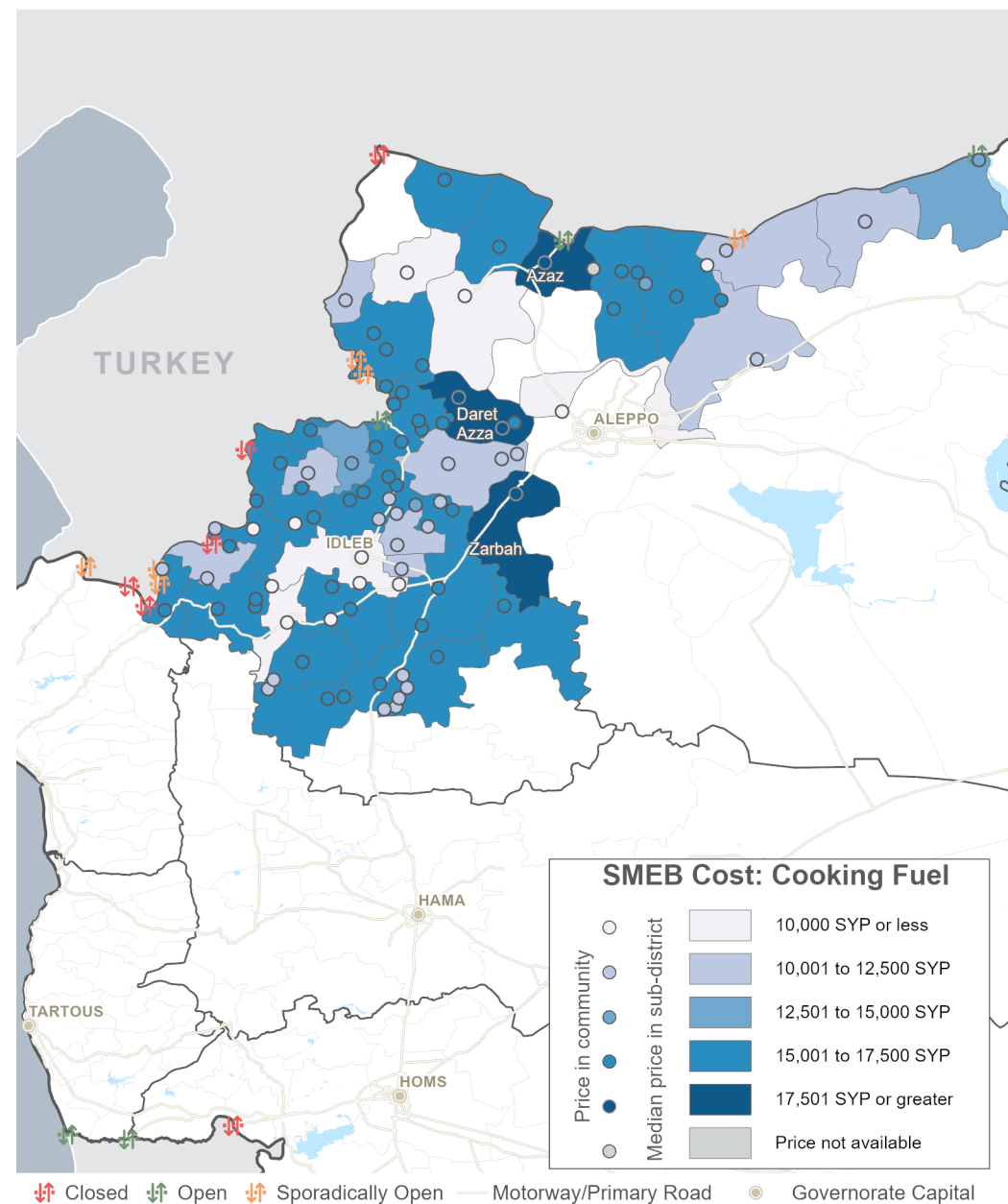
MEDIAN SMEB COOKING FUEL COSTS, BY MONTH

Region (red) and Sub-districts (grey), Thousand Syrian Pounds



SMEB COOKING FUEL COST

Sub-districts & Communities, Syrian Pounds



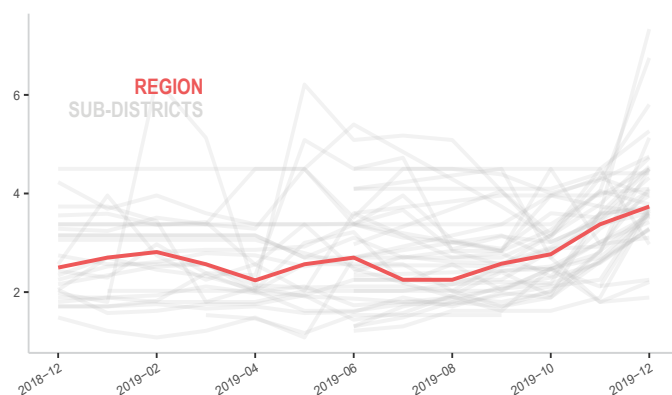
MEDIAN SMEB WATER TRUCKING PRICE

4,500L, Syrian Pounds

Sub-district	SMEB Water Truck	One month change	Six month change	Sub-district	SMEB Water Truck	One month change	Six month change
Northwest Syria	3,735	17%	52%	Idleb	6,750	67%	70%
Abul Thohur	3,645	93%	179%	Jandairis	2,205	23%	NA
Afrin	5,805	34%	NA	Janudiyeh	3,735	66%	113%
Aghtrin	4,320	33%	NA	Jarabulus	4,410	0%	NA
Al Bab	4,500	14%	NA	Jisr-Ash-Shugur	4,095	40%	63%
Ariha	5,265	65%	234%	Kafr Nobol	3,735	0%	-21%
Armanaz	3,420	33%	56%	Kafr Takharim	4,050	17%	10%
Ar-Ra'ee	4,095	2%	NA	Maaret Tamsrin	3,555	18%	44%
Atareb	3,600	27%	90%	Ma'arrat An Nu'man	4,050	0%	50%
A'zaz	4,748	11%	6%	Ma'btali	7,335	104%	NA
Badama	3,701	0%	-18%	Mare'	1,890	5%	NA
Bennsh	3,263	23%	81%	Mhambal	4,613	22%	46%
Bulbul	5,130	84%	NA	Qourqeena	2,250	-27%	47%
Dana	3,420	13%	45%	Salqin	3,825	21%	40%
Daret Azza	3,285	27%	83%	Saraqab	3,983	21%	48%
Darkosh	4,500	64%	75%	Sarmin	3,285	26%	121%
Ehsem	2,970	-35%	-29%	Sharan	3,690	74%	NA
Ghandorah	3,960	-8%	NA	Sheikh El-Hadid	5,265	17%	NA
Harim	NA	NA	NA	Suran	3,656	18%	18%
Haritan	3,600	7%	60%	Teftnaz	3,690	3%	64%
				Zarbah	3,533	35%	107%

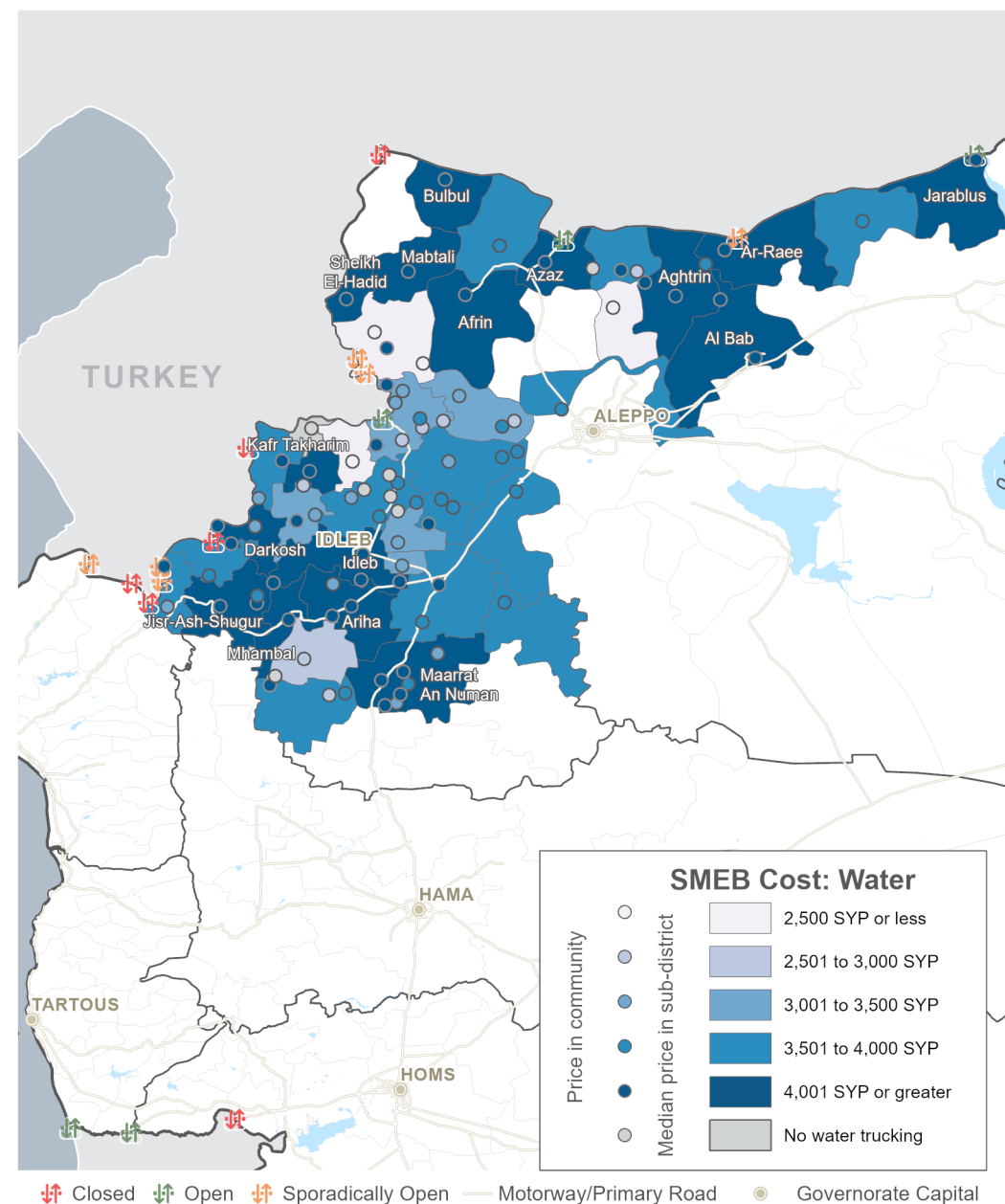
MEDIAN SMEB WATER TRUCKING COSTS, BY MONTH

Thousand Syrian Pounds Pounds



SMEB WATER TRUCKING COST

Sub-districts & Communities, Syrian Pounds



NORTHWEST SYRIA - TRANSPORT FUEL

Idleb, Western & Northern Aleppo governorates

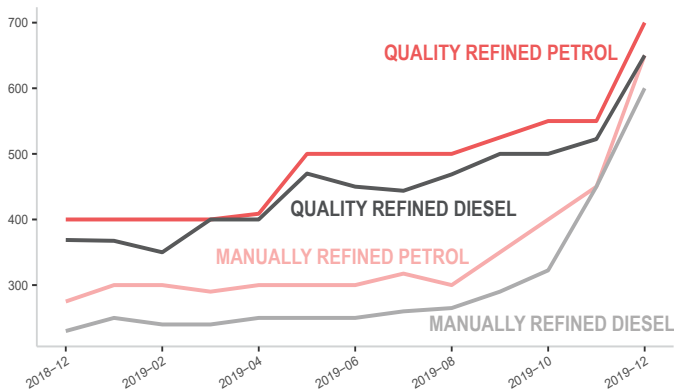
MEDIAN TRANSPORT FUEL PRICE

Diesel and Petrol, 1L (Government of Syria and Manually Refined), Syrian Pounds

Sub-district	SMEB Trans Fuel	One month change	Six month change	Sub-district	SMEB Trans Fuel	One month change	Six month change
Northwest Syria	600	NA	61%	Idleb	575	28%	44%
Abul Thohur	600	41%	140%	Jandairis	588	28%	NA
Afrin	NA	NA	NA	Janudiyeh	NA	NA	NA
Aghtrin	625	43%	NA	Jarablus	NA	NA	NA
Al Bab	450	16%	NA	Jisr-Ash-Shugur	600	27%	45%
Ariha	600	33%	50%	Kafr Nobol	616	22%	56%
Armanaz	650	33%	101%	Kafr Takharim	593	18%	76%
Ar-Ra'ee	600	37%	NA	Maaret Tamsrin	618	26%	59%
Atareb	630	21%	65%	Ma'arrat An Nu'man	667	33%	77%
A'zaz	631	33%	68%	Ma'btali	NA	NA	NA
Badama	588	31%	57%	Mare'	600	58%	NA
Bennsh	688	38%	75%	Mhambal	640	27%	102%
Bulbul	NA	NA	NA	Qourqeena	642	36%	67%
Dana	613	33%	72%	Salqin	638	25%	130%
Daret Azza	613	29%	102%	Saraqab	688	35%	68%
Darkosh	613	18%	117%	Sarmin	600	NA	71%
Ehsem	666	28%	97%	Sharan	NA	NA	NA
Ghandorah	NA	NA	NA	Sheikh El-Hadid	NA	NA	NA
Harim	600	37%	NA	Suran	625	28%	67%
Haritan	NA	NA	NA	Teftnaz	663	33%	69%
				Zarbah	NA	NA	NA

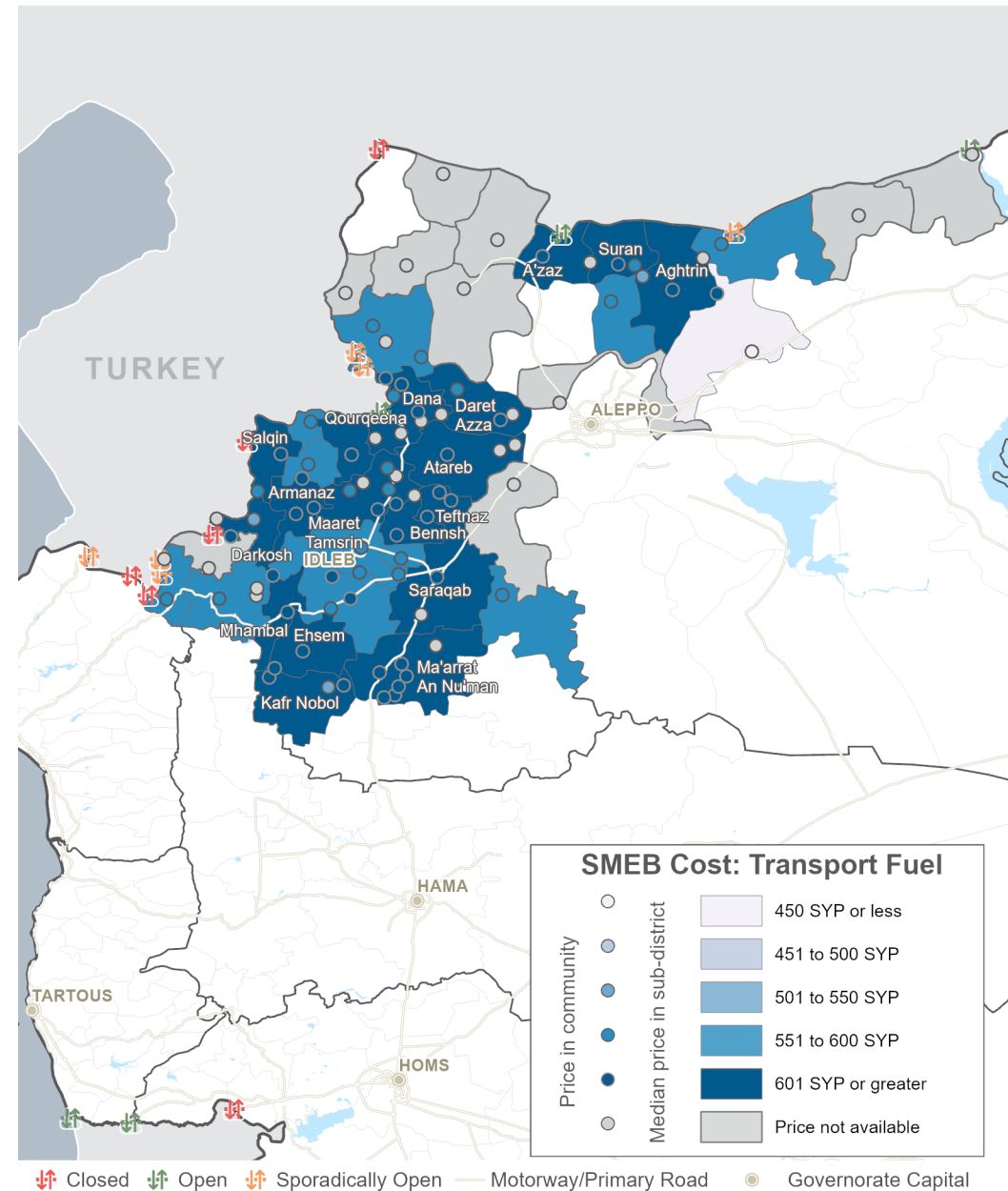
MEDIAN TRANSPORT FUEL COSTS, BY MONTH & TYPE

Syrian Pounds



TRANSPORT FUEL COST

Sub-districts & Communities, Syrian Pounds



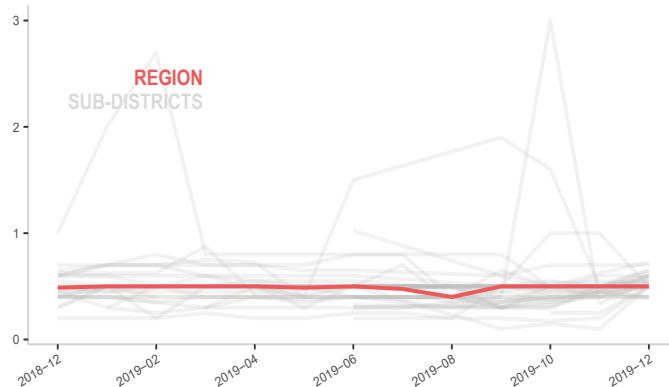
MEDIAN SMEB CELLPHONE DATA PRICE

1GB data, Syrian Pounds

Sub-district	SMEB Data (1GB)	One month change	Six month change	Sub-district	SMEB Data (1GB)	One month change	Six month change
Northwest Syria	500	0%	11%	Idleb	400	0%	0%
Abul Thohur	600	26%	20%	Jandairis	500	150%	NA
Afrin	500	0%	NA	Janudiyeh	500	25%	67%
Aghtrin	500	0%	NA	Jarablus	500	0%	NA
Al Bab	575	15%	NA	Jisr-Ash-Shugur	500	-5%	-2%
Ariha	600	50%	50%	Kafr Nobol	600	0%	50%
Armanaz	500	25%	11%	Kafr Takharim	550	10%	16%
Ar-Ra'ee	500	0%	NA	Maaret Tamsrin	600	20%	20%
Atareb	500	0%	54%	Ma'arrat An Nu'man	500	0%	25%
A'zaz	725	16%	-9%	Ma'btali	700	0%	NA
Badama	500	18%	0%	Mare'	500	400%	NA
Bennsh	400	-11%	-20%	Mhambal	350	2%	12%
Bulbul	650	30%	NA	Qourqeena	550	63%	10%
Dana	500	0%	25%	Salqin	500	11%	25%
Daret Azza	400	-11%	0%	Saraqab	450	0%	20%
Darkosh	500	0%	90%	Sarmin	500	0%	0%
Ehsem	400	-6%	-11%	Sharan	525	-5%	NA
Ghandorah	500	0%	NA	Sheikh El-Hadid	500	-50%	NA
Harim	500	100%	NA	Suran	538	8%	-23%
Haritan	650	30%	30%	Teftnaz	500	-5%	0%
				Zarbah	500	11%	67%

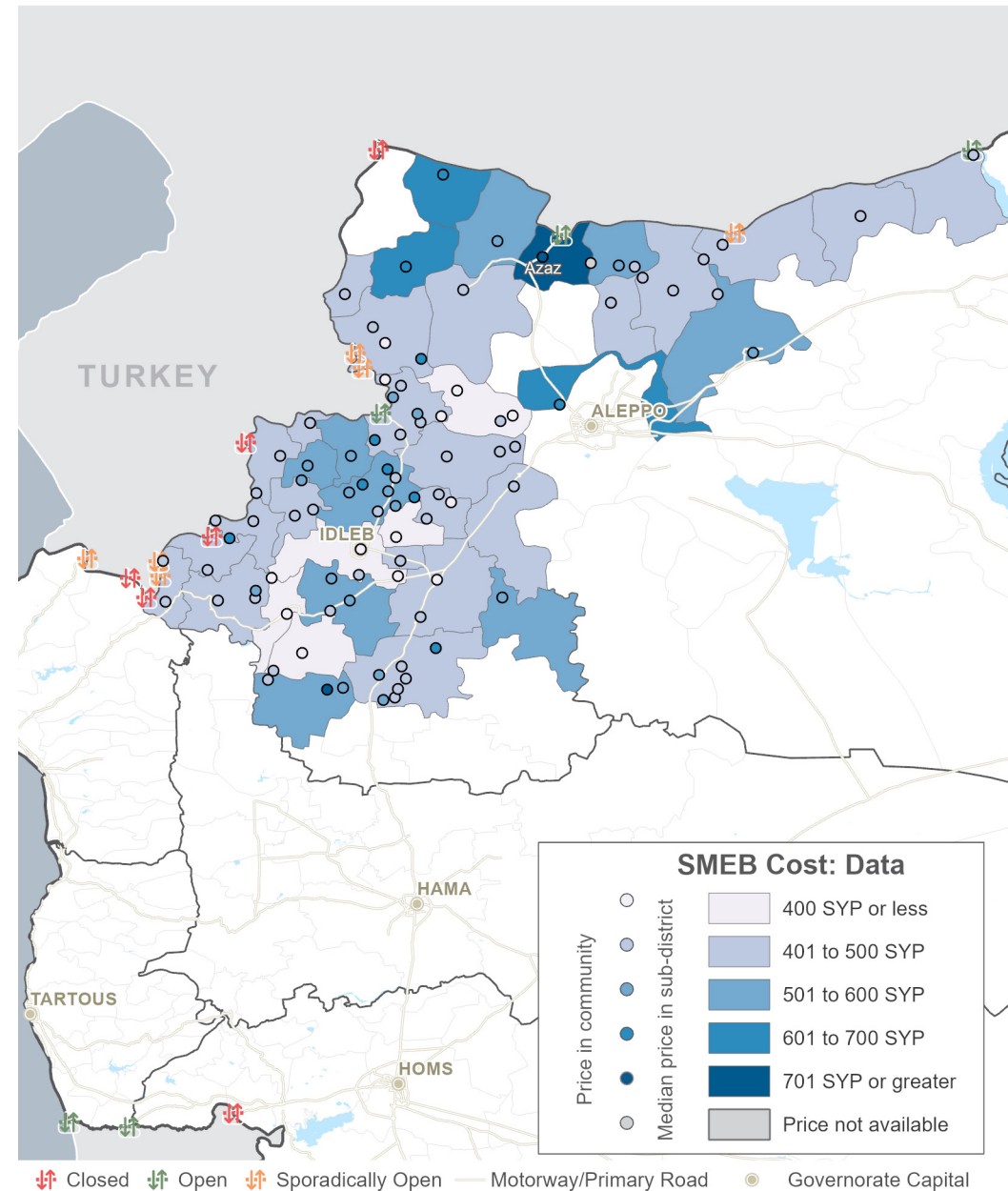
MEDIAN SMEB CELLPHONE DATA COST, BY MONTH

Thousand Syrian Pounds



SMEB CELLPHONE DATA COST

Sub-districts & Communities, Syrian Pounds



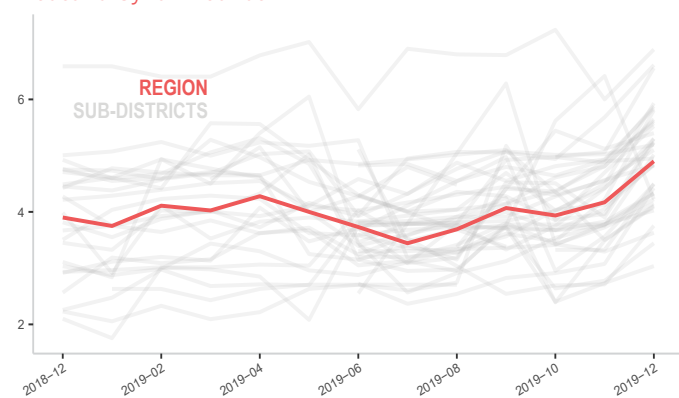
MEDIAN SMEB HYGIENE ITEMS' PRICE

12 bars of soap, 4 packs of 10 sanitary pads, 3kg of laundry/dish soap, 200g of toothpaste, Syrian Pounds

Sub-district	SMEB Hygiene Items	One month change	Six month change	Sub-district	SMEB Hygiene Items	One month change	Six month change
Northwest Syria	4,834	13%	34%	Idleb	5,613	15%	16%
Abul Thohur	5,808	38%	81%	Jandairis	4,600	15%	NA
Afrin	3,628	10%	NA	Janudiyeh	4,433	NA	64%
Agthrin	4,771	29%	NA	Jarablus	4,094	17%	NA
Al Bab	3,754	38%	NA	Jisr-Ash-Shugur	5,122	2%	60%
Ariha	3,963	13%	28%	Kafr Nobol	4,455	18%	51%
Armanaz	4,836	24%	28%	Kafr Takharim	5,193	3%	20%
Ar-Ra'ee	4,831	17%	NA	Maaret Tamsrin	5,874	27%	57%
Atareb	4,069	9%	27%	Ma'arrat An Nu'man	4,225	12%	33%
A'zaz	6,288	11%	27%	Ma'tali	5,100	12%	NA
Badama	5,591	24%	NA	Mare'	3,625	NA	NA
Bennsh	5,226	18%	31%	Mhambal	4,803	6%	25%
Bulbul	5,932	32%	NA	Qourqeena	4,500	35%	-6%
Dana	5,550	14%	40%	Salqin	5,088	22%	35%
Daret Azza	6,838	15%	-1%	Saraqab	5,926	22%	48%
Darkosh	5,600	15%	117%	Sarmin	4,225	-34%	21%
Ehsem	3,921	14%	38%	Sharan	5,647	17%	NA
Ghandorah	3,036	11%	NA	Sheikh El-Hadid	4,950	1%	NA
Harim	5,400	5%	NA	Suran	5,580	28%	29%
Haritan	4,025	6%	22%	Teftnaz	4,237	12%	29%
				Zarbah	4,425	44%	87%

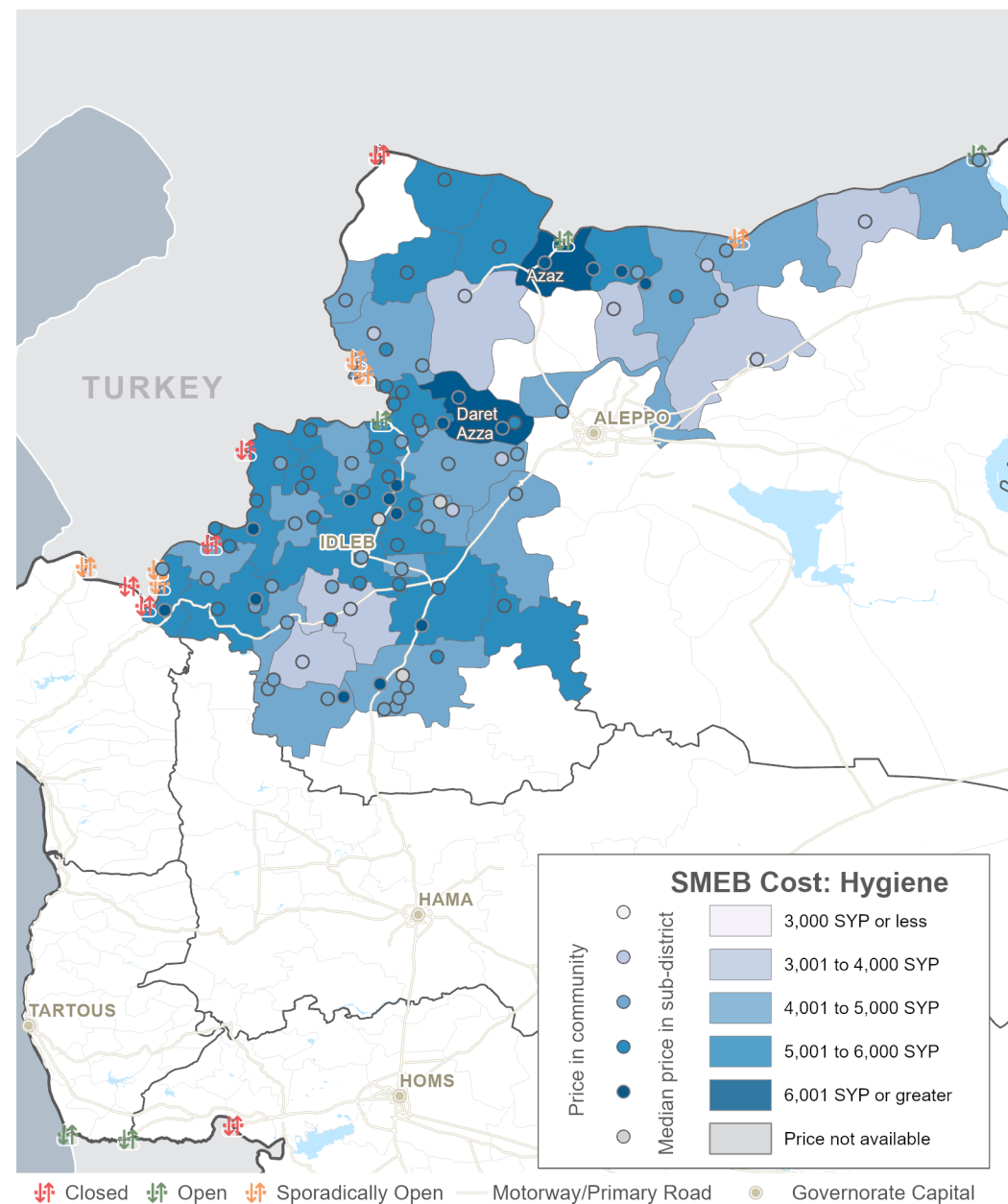
MEDIAN SMEB HYGIENE ITEMS' COSTS, BY MONTH

Thousand Syrian Pounds



SMEB HYGIENE ITEMS' COST

Sub-districts & Communities, Syrian Pounds



MEDIAN WINTERISATION ITEMS

Per 1 piece, Syrian Pounds

Sub-district	Jerry cans	Plastic sheets	Winter carpets	Kerosene/diesel heaters	Winter blanket	Mattress	Men's winter jacket	Women's winter jacket	Children's winter jacket	Men's winter boots	Women's winter boots	Children's winter boots	Adult hat	Children's hat
Northwest Syria	913	4,250	15,500	11,250	2,250	4,000	7,500	8,250	4,463	3,500	3,100	2,338	800	500
Abul Thohur	1,750	5,400	24,000	11,500	1,850	4,000	9,000	10,000	5,000	5,000	4,000	2,000	800	600
Afrin	1,000	6,250	15,000	15,500	4,500	3,000	5,500	6,750	4,000	4,500	4,000	2,500	425	400
Aghtrin	1,100	7,000	32,000	16,750	4,750	5,000	11,000	8,750	6,900	5,000	3,750	2,500	950	700
Al Bab	1,175	4,000	42,500	9,500	4,250	4,500	10,000	8,500	6,500	5,500	3,750	2,500	800	600
Ariha	1,100	3,300	40,000	13,000	1,200	3,700	9,500	18,000	5,000	4,200	4,500	3,500	1,000	850
Armanaz	1,100	4,000	14,250	12,000	2,575	5,575	10,000	16,500	4,800	4,500	3,750	2,500	1,000	750
Ar-Ra'ee	1,100	6,500	25,000	8,500	5,500	6,000	14,000	11,000	9,000	5,000	4,000	3,000	1,100	800
Atareb	1,600	5,700	22,000	18,000	3,500	3,500	6,000	6,500	3,500	3,500	3,500	2,500	700	500
A'zaz	1,125	6,000	35,500	13,000	5,500	6,250	9,750	12,750	7,250	2,850	2,500	2,400	1,125	850
Badama	1,450	5,000	27,000	11,000	4,900	4,900	9,000	15,250	4,975	3,875	4,200	2,375	863	650
Bennsh	1,025	4,000	13,650	15,000	1,750	4,650	8,900	12,300	4,800	5,150	3,625	2,975	1,225	875
Bulbul	1,700	5,000	25,500	11,000	4,200	4,600	9,700	11,000	4,600	3,600	3,200	1,700	650	400
Dana	1,400	5,200	22,000	11,500	4,000	4,500	9,200	10,800	4,700	3,500	3,400	1,800	700	500
Daret Azza	1,000	7,000	36,500	14,000	7,000	5,000	7,500	10,500	4,500	5,000	4,500	2,500	950	750
Darkosh	1,050	4,500	25,000	15,000	3,500	4,000	7,000	11,000	5,000	2,500	2,500	2,000	1,000	1,000
Ehsem	800	5,000	23,000	13,000	3,000	8,000	17,000	20,000	2,500	3,500	3,000	2,800	NA	NA
Ghandorah	1,300	6,500	30,000	8,650	1,700	4,750	6,250	5,250	3,500	4,250	2,750	2,500	900	550
Harim	1,900	5,300	18,000	11,000	4,200	4,600	11,000	13,000	6,500	3,500	4,300	2,300	1,800	1,300
Haritan	800	5,500	NA	7,500	NA	NA	10,000	15,000	6,000	5,000	4,000	3,500	1,000	500
Idleb	1,300	2,500	14,500	14,000	4,400	4,000	10,000	12,500	6,000	3,700	2,700	2,500	700	600
Jandairis	1,200	3,200	28,000	12,000	1,500	4,000	7,500	13,000	5,000	2,500	3,000	2,000	1,000	700
Janudiyeh	1,000	NA	NA	13,000	5,000	4,800	8,500	17,000	6,500	3,500	4,000	2,500	1,000	600
Jarablus	1,300	6,200	8,200	8,500	1,600	4,400	6,000	6,000	3,200	4,300	2,500	2,300	1,200	600
Jisr-Ash-Shugur	1,338	5,500	26,000	21,000	2,875	4,500	7,000	6,000	3,000	3,000	2,500	1,500	900	500
Kafr Nobol	1,125	5,000	19,750	9,000	3,100	5,000	7,375	7,625	4,500	4,400	3,675	2,450	1,063	625
Kafr Takharim	950	3,500	15,500	12,500	2,750	4,200	5,500	8,000	4,500	3,600	4,000	3,200	450	400

MEDIAN WINTERISATION ITEMS

Per 1 piece, Syrian Pounds

Sub-district	Jerry cans	Plastic sheets	Winter carpets	Kerosene/diesel heaters	Winter blanket	Mattress	Men's winter jacket	Women's winter jacket	Children's winter jacket	Men's winter boots	Women's winter boots	Children's winter boots	Adult hat	Children's hat
Maaret Tamsrin	1,400	5,200	23,250	11,000	2,150	4,500	9,125	11,250	4,500	3,875	3,650	2,175	763	581
Ma'arrat An Nu'man	1,425	6,125	27,250	11,875	3,125	5,375	8,250	13,000	5,000	2,600	2,500	1,600	850	600
Ma'btali	NA	NA	NA	NA	NA	NA	NA	NA	NA	NA	NA	NA	NA	NA
Mare'	1,200	3,400	30,000	10,000	1,000	3,750	7,500	14,500	5,000	3,000	3,500	2,000	1,000	500
Mhambal	NA	5,000	28,000	NA	5,500	5,000	12,375	18,750	6,650	3,350	3,500	2,400	600	369
Qourqeena	1,600	5,300	18,000	11,000	4,500	4,600	9,400	9,800	4,500	3,500	3,500	2,500	1,000	500
Salqin	1,150	2,750	25,250	16,500	2,350	5,250	7,875	12,875	5,750	3,875	3,375	2,500	1,000	838
Saraqab	931	3,775	10,875	11,150	1,950	3,375	8,813	9,188	4,250	4,175	4,050	2,575	688	538
Sarmin	950	4,400	22,000	9,000	2,350	5,000	11,000	15,000	5,000	4,750	3,000	2,500	1,100	750
Sharan	650	7,400	19,000	16,000	1,700	5,000	7,250	6,000	3,000	3,750	2,600	1,750	1,100	500
Sheikh El-Hadid	1,000	6,000	22,000	16,000	4,000	4,000	7,000	12,000	5,000	4,000	4,500	3,000	1,500	1,000
Suran	975	4,375	33,125	20,625	2,475	4,125	9,700	10,250	5,625	3,700	3,050	2,125	900	675
Teftnaz	810	3,600	7,950	11,600	988	3,750	8,725	13,938	4,075	3,963	3,613	2,825	925	775
Zarbah	700	NA	NA	17,000	NA	NA	NA	NA	NA	NA	NA	NA	NA	NA

MEDIAN WINTERISATION ITEMS (ALTERNATIVE HEATING/COOKING FUEL)

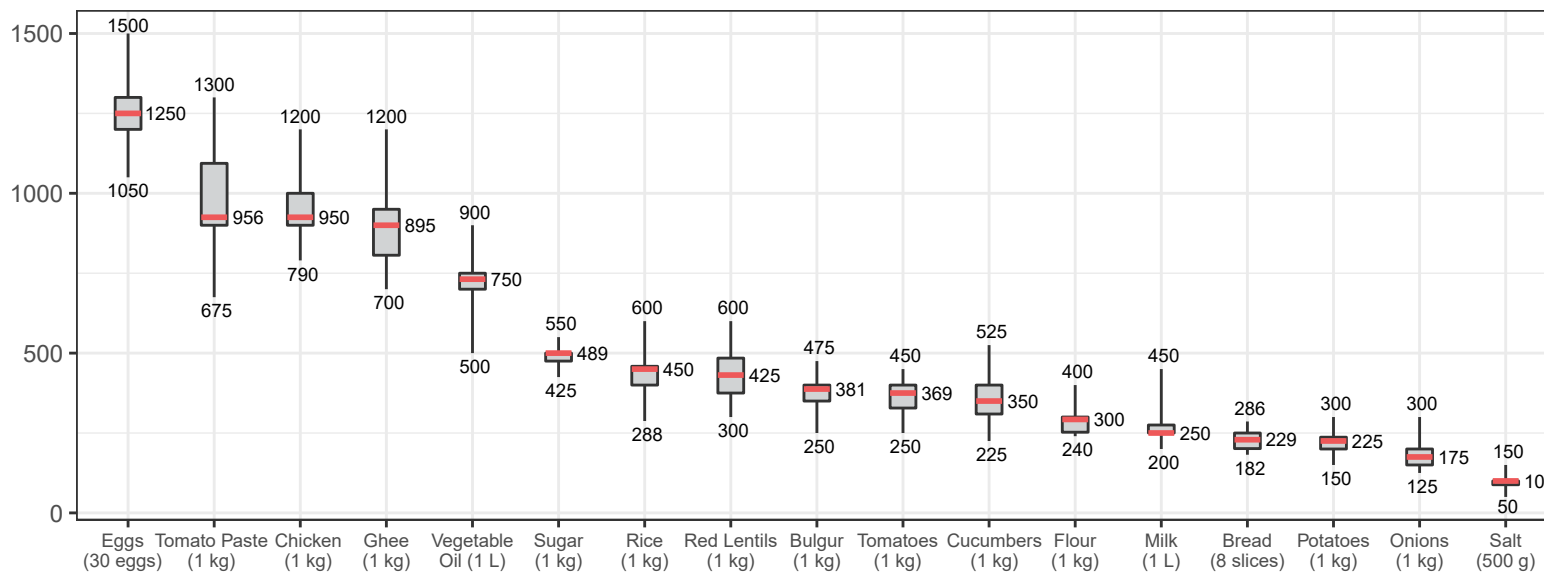
Per 1 kilogram, Syrian Pounds

Sub-district	Coal	Firewood	Olive residue	Pistachio shells
Northwest Syria	75	85	78	170
Abul Thohur	80	86	83	168
Afrin	NA	77	75	150
Aghtrin	35	80	70	NA
Al Bab	60	85	70	NA
Ariha	70	75	80	150
Armanaz	60	76	80	170
Ar-Ra'ee	75	80	65	NA
Atareb	75	90	75	165
A'zaz	175	75	75	NA
Badama	88	88	80	130
Bennsh	100	93	98	170
Bulbul	80	90	80	173
Dana	80	87	80	170
Daret Azza	85	80	75	170
Darkosh	65	55	75	140
Ehsem	63	85	68	180
Ghandorah	120	100	90	NA
Harim	50	85	80	170
Haritan	75	100	70	NA
Idleb	65	85	70	150

Sub-district	Coal	Firewood	Olive residue	Pistachio shells
Jandairis	75	65	70	NA
Janudiyeh	80	90	85	NA
Jarablus	112	155	95	185
Jisr-Ash-Shugur	70	55	80	NA
Kafr Nobol	65	85	80	170
Kafr Takharim	75	76	81	170
Maaret Tamsrin	80	85	80	170
Ma'arrat An Nu'man	65	85	75	180
Ma'btali	NA	50	NA	NA
Mare'	NA	NA	NA	NA
Mhambal	76	75	NA	NA
Qourqeena	80	80	78	180
Salqin	70	65	78	175
Saraqab	35	66	66	134
Sarmin	65	80	80	170
Sharan	60	47	70	170
Sheikh El-Hadid	70	60	65	NA
Suran	120	88	73	NA
Teftnaz	65	90	75	180
Zarbah	75	95	85	NA

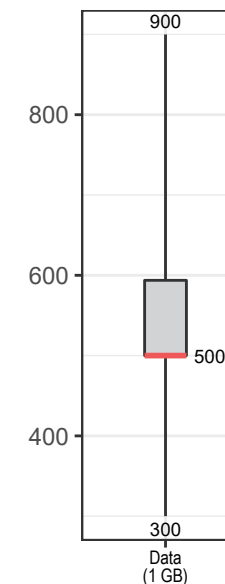
ASSESSED FOOD ITEMS

Syrian Pounds



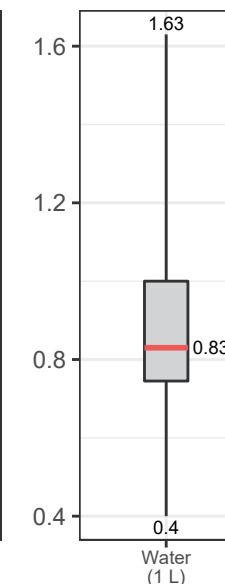
CELLPHONE DATA

Syrian Pounds



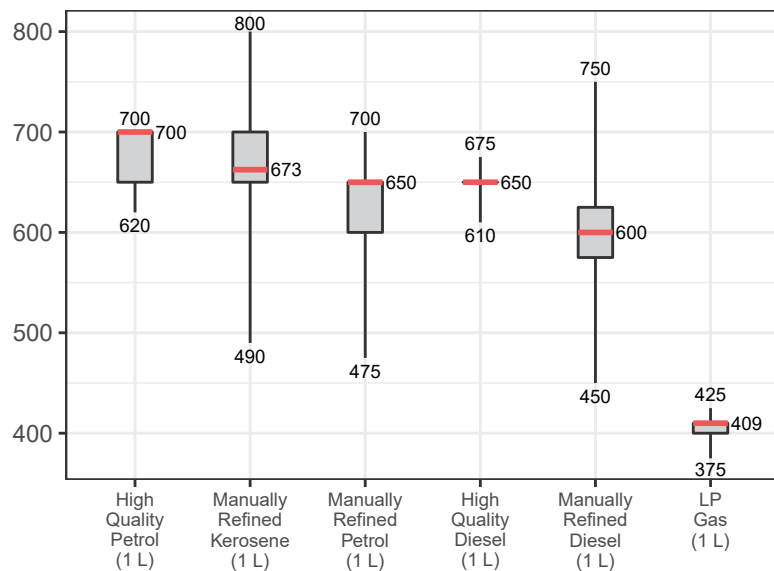
WATER TRUCKING

Syrian Pounds



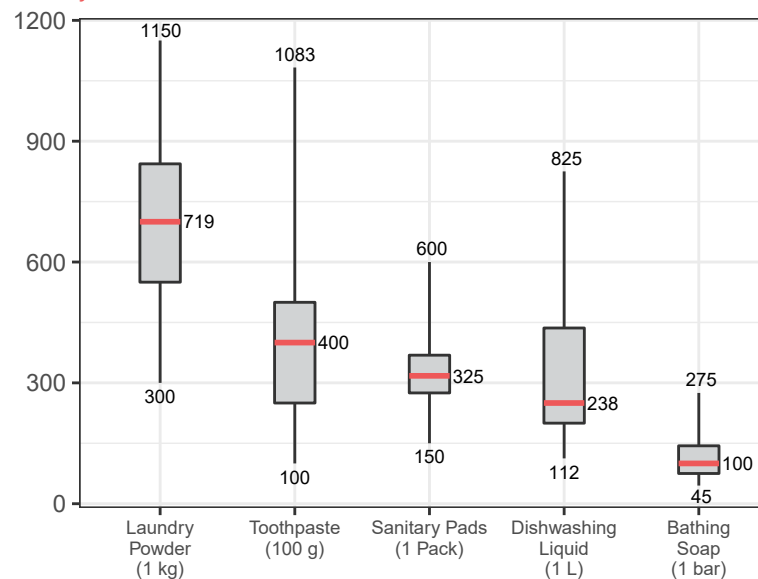
ASSESSED FUEL ITEMS

Syrian Pounds

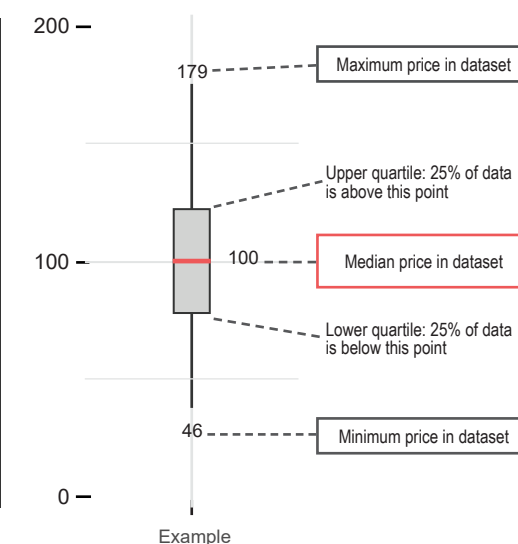


ASSESSED HYGIENE ITEMS

Syrian Pounds



READING BOXPLOTS



METHODOLOGY

In order to be included in the Syria Market Monitoring Exercise, markets must be permanent in nature, large enough to support at least two wholesalers, and diverse enough to provide a sufficient variety of goods and commodities. Additionally, the shops surveyed within each market must be housed in permanent structures and must sell certain items to be eligible for inclusion. Participating organisations train their enumerators on the Market Monitoring methodology and data collection tools using standard training materials developed by REACH. Each enumerator aims to assess three to five shops of each type in the main market in their assigned sub-district, using surveys to collect information about the cheapest prices of each item and whether there are any barriers in the supply chain. In sub-districts where direct surveying by enumerators is not possible, data collection is conducted remotely through key informants such as shop owners, suppliers and consumers. A survey form is deployed on KoBo each month to capture price and stock information from different types of establishments, including grocery stores, fuel traders, currency exchange shops, water trucking services and mobile phone shops, among others. Nearly all participating partners submit their data to these KoBo forms, using the KoBoCollect Android app to upload data. A small number of partners, by prior permission, collect data using fully harmonised data collection tools deployed on other platforms, then submit their raw data to REACH for standardisation, compilation and cleaning.

Following data collection, REACH compiles and cleans all partners' data, normalising prices and cross-checking outliers. The cleaned data is then analysed by SMEB costs, components of the SMEB, and by commodities. These trends are observed at the sub-district-level and, when possible, at the community-level. Prices are divided into quartiles and boxplots are created to assist CBR-TWG members in understanding the distribution of prices across the northeast and

northwest of Syria. To illustrate local variations in prices and availability, REACH uses the collected data to map the price of the SMEB in each sub-district and adds illustrations of surrounding border crossings, with data sourced from the United Nations Office for the Coordination of Humanitarian Affairs (OCHA). In addition, each SMEB component costs and transport fuel prices are graphed to visualize trends over time.

The cleaned datasets are available on the [Humanitarian Data Exchange](#) website and are distributed to all participating partners, as well as to interested clusters and the broader humanitarian community.

Calculating 'median cheapest price'

This figure is calculated by taking the median of the minimum-reported prices of a region's sub-districts. In turn, the minimum-reported prices for each sub-district were taken from the median of the minimum-reported prices of the constituent towns assessed.

Calculating Survival Minimum Expenditure Basket (SMEB) costs

The cost of a SMEB is calculated for each assessed sub-district by calculating the median cheapest price of each SMEB commodity in that sub-district, then multiplying these medians by the number of units that an average Syrian household requires to purchase in a month. The composition of the SMEB can be found on [page 1](#). SMEB vegetables includes potatoes, tomatoes, onions and cucumbers.

Calculating price trends over time

One month and six-month price changes and trends are calculated only with the communities of a sub-district with consistent coverage across months. For the current month's regional SMEB cost, all assessed communities are included in determining medians; thus, prices and percentage changes within the Costs and Changes tables may differ from the current month's regional SMEB cost.

Seasonal items

Winterisation items have been added to the market monitoring exercise and data collection will continue for these items over winter, until February 2020. Whilst other commodities are bought regularly by families, winterisation items are not expected to be bought regularly and may be one-off purchases for each family member.

Changes to coverage

Given security and access constraints in the south of Syria and in northeast Syria, data collection has been unable to take place since July 2018 and October 2019, respectively.

Challenges and limitations

As the Syria Market Monitoring Exercise currently includes 13 partners based in 2 hubs, achieving a consistent approach is inherently challenging. Participating organisations are therefore requested to adopt harmonised data collection methodologies and tools to ensure that the data uploaded is as accurate as possible. Because this exercise collects data directly from vendors and relies on partner organizations for its wide coverage, Market Monitoring may sporadically lose coverage temporarily or for longer periods of time owing to challenges in accessing locations or due to loss in the shared data collection capacity of the project. This impacts the ability to report on trends, as can be seen in the line graphs and 'NA' values in the tables.

ABOUT REACH

REACH Initiative facilitates the development of information tools and products that enhance the capacity of aid actors to make evidence-based decisions in emergency, recovery and development contexts. The methodologies used by REACH include primary data collection and in-depth analysis, and all activities are conducted through inter-agency aid coordination mechanisms. REACH is a joint initiative of IMPACT Initiatives, ACTED and the United Nations Institute for Training and Research - Operational Satellite Applications Programme (UNITAR-UNOSAT). For more information please visit our website:

www.reach-initiative.org. You can contact us directly at: geneva@reach-initiative.org and follow us on Twitter [@REACH_info](https://twitter.com/REACH_info)

ABOUT THE CASH-BASED RESPONSES TECHNICAL WORKING GROUP

The Cash-Based Responses Technical Working Group (CBR-TWG) was established in May 2014 to analyse the impact of the ongoing conflict on markets in Syria and guide the implementation of humanitarian cash and voucher programmes within those markets. REACH and the CBR-TWG have been partners on the Syria Market Monitoring Exercise since early 2015.