

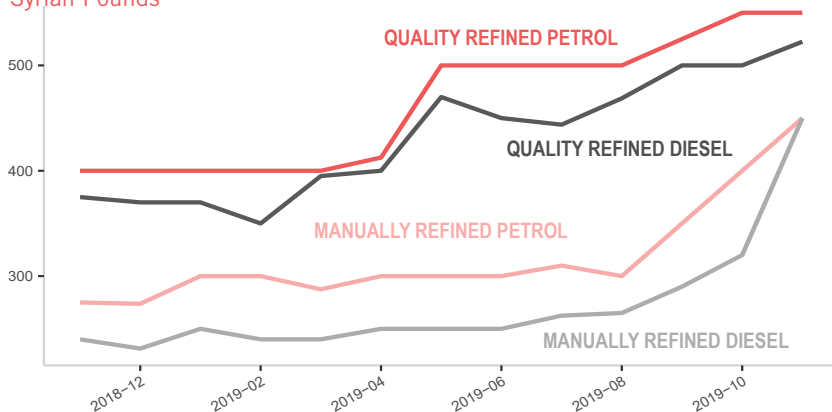
## MEDIAN TRANSPORT FUEL PRICE

Diesel and Petrol, 1L (Quality and Manually Refined), Syrian Pounds

Sub-district	SMEB Trans Fuel	One month change	Six month change	Sub-district	SMEB Trans Fuel	One month change	Six month change
Northwest Syria	483	19%	29%	Idleb	450	-4%	9%
Abul Thohur	425	42%	70%	Jandairis	458	-5%	24%
Afrin	463	25%	32%	Janudiyeh	500	18%	100%
Aghtrin	438	52%	68%	Jarablus	475	30%	50%
Al Bab	388	6%	46%	Jisr-Ash-Shugur	471	4%	26%
Ariha	453	9%	13%	Kafr Nobol	506	12%	34%
Armanaz	488	24%	38%	Kafr Takharim	501	16%	29%
Ar-Ra'ee	438	52%	61%	Maaret Tamsrin	491	21%	25%
Atareb	522	22%	38%	Ma'arrat An Nu'man	500	7%	32%
A'zaz	474	17%	28%	Ma'b'tali	475	19%	10%
Badama	450	20%	16%	Mare'	379	-24%	17%
Bennsh	497	14%	25%	Mhambal	503	45%	72%
Bulbul	463	22%	71%	Qourqeena	471	15%	22%
Dana	462	17%	26%	Salqin	510	32%	90%
Daret Azza	475	21%	10%	Saraqab	510	10%	28%
Darkosh	519	13%	89%	Sarmin	NA	NA	NA
Ehsem	519	13%	46%	Sharan	458	1%	41%
Ghandorah	483	38%	46%	Sheikh El-Hadid	488	9%	50%
Harim	437	2%	NA	Suran	489	16%	33%
Haritan	485	49%	76%	Teftnaz	500	7%	29%
				Zarbah	550	38%	47%
				Ziyara	423	37%	52%

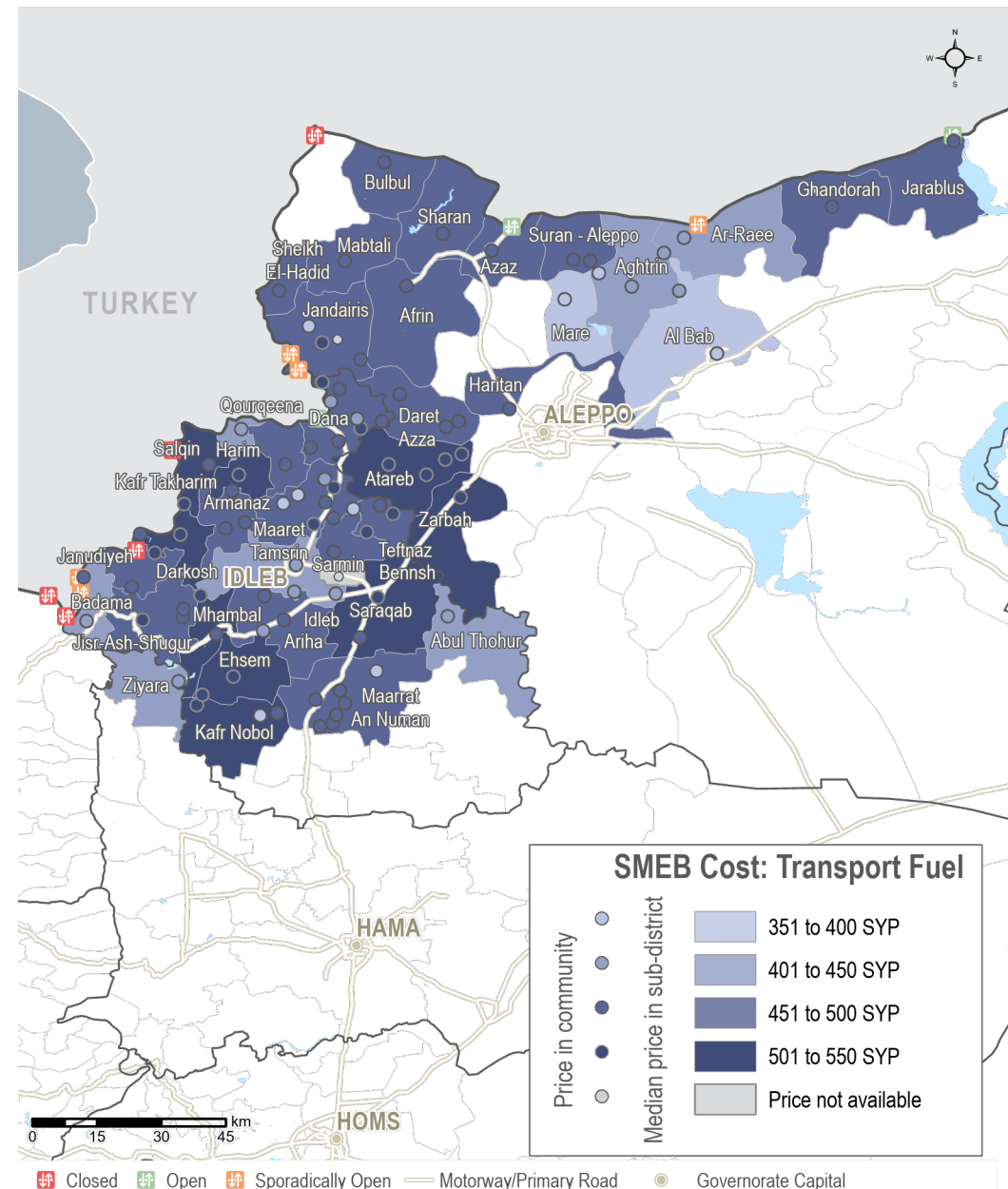
## MEDIAN TRANSPORT FUEL COSTS, BY MONTH & TYPE

Syrian Pounds



## TRANSPORT FUEL COST

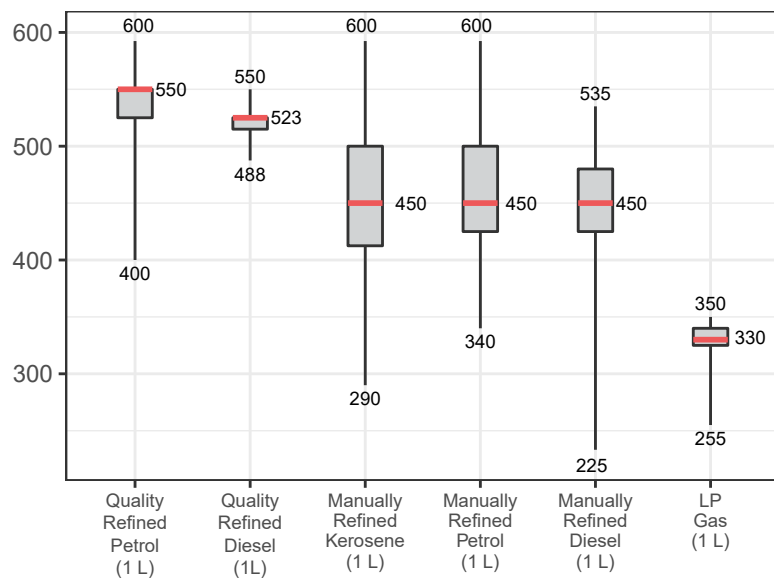
Sub-districts & Communities, Syrian Pounds



\*The full November Market Monitoring dataset can be [found here](#).

## ASSESSED FUEL ITEMS

Syrian Pounds



## METHODOLOGY

The information in this factsheet is drawn from the [November Market Monitoring](#), an exercise conducted on a monthly basis by REACH in partnership with the Cash-Based Responses Technical Working Group (CBR-TWG) to inform humanitarian cash programming, and aims to highlight the recent increase in various fuel prices.

It is conducted throughout accessible parts of Syria to assess the availability and prices of 36 basic commodities that are typically sold in markets and consumed by average Syrian households, including food and non-food items, water, fuel, and cellphone data. Of these, 18 items comprise the Survival Minimum Expenditure Basket (SMEB), which represents the minimum, culturally adjusted items required to support a 6-person household for a month.

In order to be included in the Syria Market Monitoring Exercise, markets must be permanent in nature, large enough to support at least two wholesalers, and diverse enough to provide a sufficient variety of goods and commodities. Additionally, the shops surveyed within each market must be housed in permanent structures and must sell certain items to be eligible for inclusion.

Information is collected by REACH and 12 partner organisations. Enumerators are trained on the Market Monitoring methodology and data collection tools using standard training materials developed by REACH. Each enumerator aims to assess three to five shops of each type in the main market in their assigned sub-district, using surveys to collect information about the cheapest prices of each item and whether there are any barriers in the supply chain. In sub-districts where direct surveying by enumerators is not possible, data collection is conducted remotely through key informants such as shop owners, suppliers and consumers.

A survey form is deployed on KoBo each month to capture price and stock information from different types of establishments, including grocery stores, fuel traders, currency exchange shops, water trucking services and mobile phone shops, among others. Nearly all participating partners submit their data to these KoBo forms, using the KoBoCollect Android app to upload data. A small number of partners, by prior permission, collect data using fully harmonised data collection tools deployed on other platforms, then submit their raw data to REACH for standardisation, compilation and cleaning.

Following data collection, REACH compiles and cleans all partners' data, normalising prices and cross-checking outliers. The cleaned data is then analysed by SMEB costs, components of the SMEB, and by commodities. These trends are observed at the sub-district-level and, when possible, at the community-level. Prices are divided into quartiles and boxplots are created to assist CBR-TWG members in understanding the distribution of prices across the northeast and northwest of Syria. To illustrate local variations in prices and availability, REACH uses the collected data to map the price of the SMEB in each sub-district and adds illustrations of surrounding border crossings, with data sourced from the United Nations Office for the Coordination of Humanitarian Affairs (OCHA). In addition, each SMEB component costs and transport fuel prices are graphed to visualize trends over time.

The cleaned datasets are available on the [Humanitarian Data Exchange](#) website and are distributed to all participating partners, as well as to interested clusters and the broader humanitarian community.

## CALCULATING 'MEDIAN CHEAPEST PRICE'

This figure is calculated by taking the median of the minimum-reported prices of a region's sub-districts. In turn, the minimum-reported prices for each sub-district were taken from the median of the minimum-reported prices of the constituent towns assessed.

## CALCULATING PRICE TRENDS OVER TIME

One month and six-month price changes and trends are calculated only with the communities of a sub-district with consistent coverage across months. For the current month's regional SMEB cost, all assessed communities are included in determining medians; thus, prices and percentage changes within the Costs and Changes tables may differ from the current month's regional SMEB cost.

## WHAT IS THE CASH-BASED RESPONSES TECHNICAL WORKING GROUP?

The Cash-Based Responses Technical Working Group (CBR-TWG) was established in May 2014 to analyse the impact of the ongoing conflict on markets in Syria and guide the implementation of humanitarian cash and voucher programmes within those markets. REACH and the CBR-TWG have been partners on the Syria Market Monitoring Exercise since early 2015.

## ABOUT REACH

REACH Initiative facilitates the development of information tools and products that enhance the capacity of aid actors to make evidence-based decisions in emergency, recovery and development contexts. The methodologies used by REACH include primary data collection and in-depth analysis, and all activities are conducted through inter-agency aid coordination mechanisms. REACH is a joint initiative of IMPACT Initiatives, ACTED and the United Nations Institute for Training and Research - Operational Satellite Applications Programme (UNITAR-UNOSAT). For more information please visit our website:

[www.reach-initiative.org](http://www.reach-initiative.org). You can contact us directly at: [geneva@reach-initiative.org](mailto:geneva@reach-initiative.org) and follow us on Twitter [@REACH\\_info](https://twitter.com/REACH_info)