

NORTHWEST SYRIA MARKET MONITORING EXERCISE

Snapshot: 2nd-9th August 2021

INTRODUCTION

To inform humanitarian cash programming, REACH - in partnership with the northeast (NES) and northwest (NWS) Syria Cash Working Group (CWG) - conducts monthly Market Monitoring Exercises in northern Syria. The exercise assesses the availability and prices of 36 basic commodities that are typically sold in markets and consumed by average Syrian households, including food and non-food items, water, fuel, and cell phone data.

Of these, 18 items comprise the Survival Minimum Expenditure Basket (SMEB; see below), which represents the minimum, culturally adjusted items required to support a 6-person household for a month.

The accompanying data is disseminated monthly and is distributed through partners across the humanitarian community. See REACH Resource Centre for the [August 2021 dataset](#).

Coverage and data collection dates

In August 2021, REACH and partners covered:

- 2 governorates
- 9 districts
- 33 subdistricts
- 80 communities
- 2,186 individual shops

In light of the fluctuation of the Syrian Pound (SYP)'s value and resulting market disruption, prices should be seen as representative only of the markets and dates where and when information was collected (2-9th August 2021).

Partners

Data collection for this month was conducted by REACH and the following partners:

- ATAA
- GOAL
- People in Need
- Solidarités International
- Violet
- CWG NWS

KEY DEVELOPMENTS

NWS SMEB Basket Price Increase

Syrian Pound (SYP)

SMEB August value: 382,601 SYP

One month change (compared to July): **increase of 4%**

Six month change (compared to February): **increase of 10%**

United States Dollar (USD)

SMEB August value: 118 USD

One month change: **increase of 1%**

Six month change: **increase of 1%**

The year 2021 continues to have the highest recorded SMEB in SYP in the Market Monitoring exercise, attributed to the protracted hyperinflation of the Syrian economy. The SMEB in 2021 has ranged between 113-118 United States Dollars (USD) and remains the highest recorded cost in USD since May 2019.

Days Needed to Work to Afford the SMEB #1

The median daily wage for residents and IDPs in NWS was 6,972 SYP. This means a household of six whose sole income is from an unskilled daily labourer would need the equivalent of **55 days** of work to cover the price of the NES SMEB.

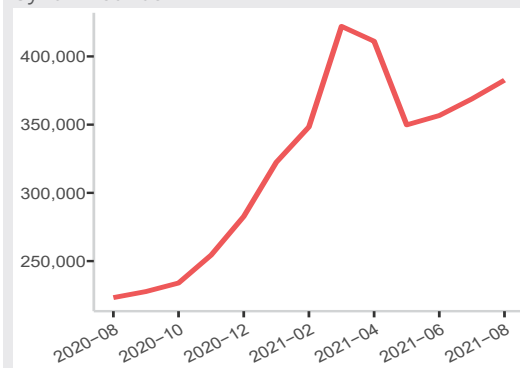
MEDIAN SMEB COST FOR NWS

382,601 SYP (118 USD)

NWS COVERAGE: IDLEB, WESTERN & NORTHERN ALEPPO GOVERNORATES

MEDIAN SMEB COSTS, BY MONTH

Syrian Pounds



SMEB Water Trucking Price Increase #2

NWS average: 15,210 SYP per 4,500 litres

One month change: **increase of 11%**

Six month change: **increase of 26%**

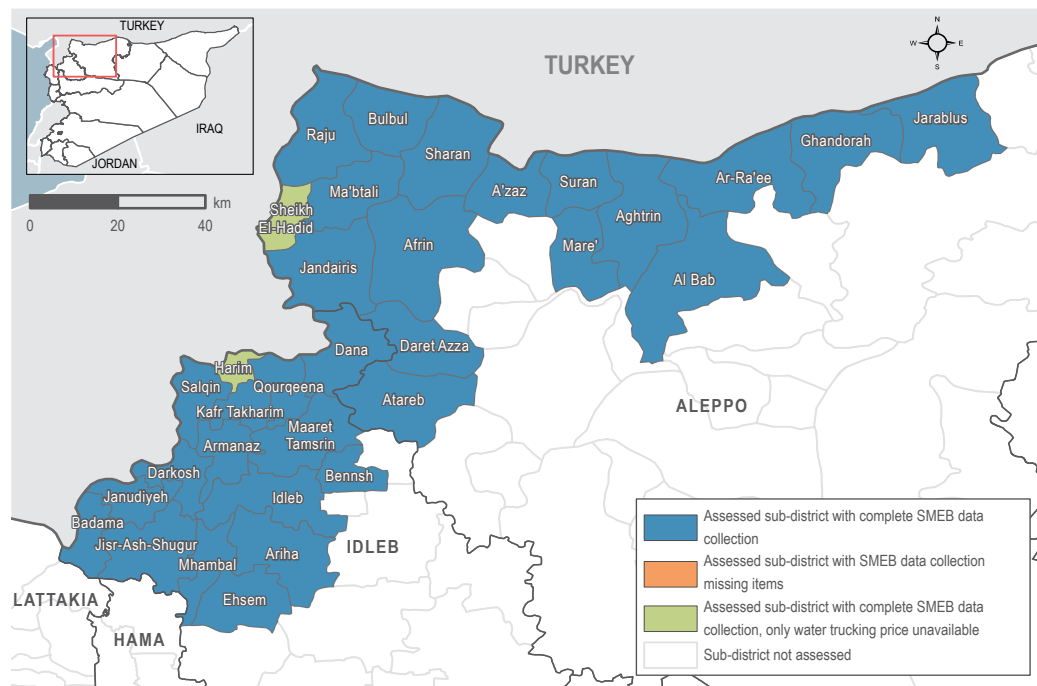
% of surveyed vendors reporting item as unavailable in their community/neighbourhood: 0%

- Aleppo: 15,480 SYP
- Idleb: 13,410 SYP

The year 2021 continues to see the highest price for water trucking since the market monitoring assessment began in 2016, and both governorates have since seen erratic prices throughout the year. Whilst water trucking prices in Idlib appear stable relative to July, NE Aleppo continues to see an upward trend in prices for August. Water trucking is the main source of clean water for most individuals, and REACH field teams report that some towns have experienced water cuts which have increased prices along with the increased demand in the summer months. Furthermore, the falling water levels of water wells means water tankers drive to more remote areas, which requires more transport fuel and increased cost.

According to the [Agriculture Input and Commodity Bulletin for July 2021](#), the water crisis - coupled with the climate-induced drought-like conditions - has impacted agricultural output and is threatening output markets, food security and agriculture-based livelihoods of farmers in Syria.

ASSESSED AREAS AND COVERAGE



#1 According to the [August 2021 Humanitarian Situation Overview of Syria Dataset](#)

#2 Equates to 25L per person for day. See page 6 for further water trucking data

NORTHWEST SYRIA - KEY DEVELOPMENTS AND OVERVIEW

MEDIAN SMEB COSTS & CHANGES

Syrian Pounds

Sub-district	SMEB	One month change	Six month change
Northwest Syria	382,601	4%	10%
Afrin	383,603	5%	NA
Aghtrin	362,853	4%	16%
Al Bab	398,769	2%	32%
Ariha	417,380	6%	NA
Armanaz	403,859	3%	3%
Ar-Ra'ee	385,338	6%	18%
Atareb**	381,674	NA	-3%
A'zaz	377,781	4%	23%
Badama	383,279	6%	19%
Bennsh	361,684	3%	5%
Bulbul	382,113	3%	NA
Dana	397,321	4%	9%
Daret Azza	396,224	7%	11%
Darkosh	394,211	4%	6%
Ehsem	389,538	5%	NA
Ghandorah	375,314	7%	24%
Harim	365,430	3%	4%
Idleb	391,399	7%	6%
Jandairis	359,733	2%	NA
Janudiyeh	372,632	1%	7%
Jarablus	382,601	3%	18%
Jisr-Ash-Shugur	382,845	8%	6%
Kafr Takharim	400,665	8%	13%
Maaret Tamsrin	397,495	2%	14%
Ma'btali	348,892	2%	NA
Mare'	370,582	6%	13%
Mhambal	385,030	3%	9%
Qourqeena	373,469	4%	4%
Raju	363,354	8%	NA
Salqin	382,163	0%	3%
Sharan	375,954	2%	NA
Sheikh El-Hadid	366,788	2%	NA
Suran	375,627	2%	11%

SURVIVAL MINIMUM EXPENDITURE BASKET (SMEB) CONTENTS

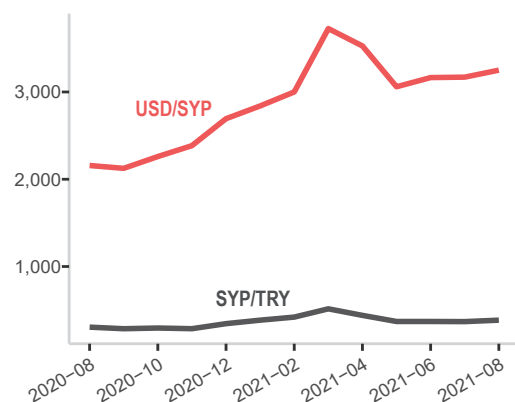
	Item	Quantity
Food Items	Bread	37 kg
	Bulgur	15 kg
	Chicken	6 kg
	Eggs	6 kg
	Fresh vegetables	12 kg
	Ghee/vegetable oil	7 kg/L
	Red lentils	15 kg
	Rice	19 kg
	Salt	1 kg
	Sugar	5 kg
	Tomato paste	6 kg
Hygiene items	Bathing soap	12 bars
	Laundry/dish soap	3 kg
	Sanitary pads	4 packs of 10
	Toothpaste	200 g
Fuel	Cooking fuel+	25 L
Water	Water trucking	4500 L
Telecom	Smartphone data	1 GB
Other	Float (other costs)++	7.5% total value

+ Kerosene in northern Syria

++ Float only applied to observations where prices of all SMEB contents could be collected.

Note: Lack of data for a SMEB item does not necessarily imply a shortage.

EXCHANGE RATES, BY MONTH & CURRENCY



KEY DEVELOPMENTS CONTINUED

High Quality Transport Fuel Price Increase^{#3}

The notable unavailability of lower quality but less expensive fuels (largely European fuels imported via Turkey) forces prices for high quality diesel and petrol to remain high, driven both by increasing demand as well as by fluctuating exchange rates of both the SYP and the TRY against the USD.

High Quality Diesel: 2,500 SYP per litre

One month price change: **increase of 1%**

Six month price change: **increase of 19%**

% of surveyed vendors reporting item as unavailable in their community/ neighbourhood: 3%

High Quality Petrol: 2,700 SYP per litre

One month price change: **increase of 2%**

Six month price change: **increase of 36%**

% of surveyed vendors reporting item as unavailable in their community/ neighbourhood: 3%

Manually Refined Fuel Price Increase

Manually refined fuels remain frequently unavailable in NWS due to low levels of import. Incidents in and around refineries further reduced the availability of manually refined fuels, according to REACH field teams. REACH field teams also reported that manually refined fuels are often used as transport fuel as high quality fuels are rarely available.

Manually Refined Diesel: 1,689 SYP per litre

One month change: **increase of 1%**

Six month change: **increase of 11%**

% of surveyed vendors reporting item as unavailable in their community/ neighbourhood: 4%

Manually Refined Petrol: 1,800 SYP per litre

One month change: **increase of 0%**

Six month change: **increase of 20%**

% of surveyed vendors reporting item as unavailable in their community/ neighbourhood: 76%

Exchange Rates (see graph, left)^{#4}

USD – SYP depreciates against USD

Informal USD/SYP regional median exchange rate: 3,250 SYP to 1 USD

One month rate change: **increase of 3%**

Six month rate change: **increase of 8%**

TRY (Turkish Lira) appreciates against USD

Informal USD/TRY regional median exchange rate: 8.39 TRY to 1 USD

One month rate change: **decrease of 3%**

Six month rate change: **increase of 17%**

In August, the SYP depreciated again against the USD. The highest exchange rate was recorded at 3,300 SYP for 1 USD in Atareb and Kafr Safra community in Aleppo governorate; and Haranbush and Harim community in Idleb governorate. The TRY appreciated slightly against the USD, which usually impacts the price of the majority of items imported into the region from Turkey. However, this did not appear to have a noticeable impact on prices overall in August.

For an overview of the USD/SYP exchange rate across all of Syria, please see the [WFP VAM Food Security Analysis for July 2021](#).

* For these sub-districts, more than 50% of the items' median prices rely on less than 3 observations.

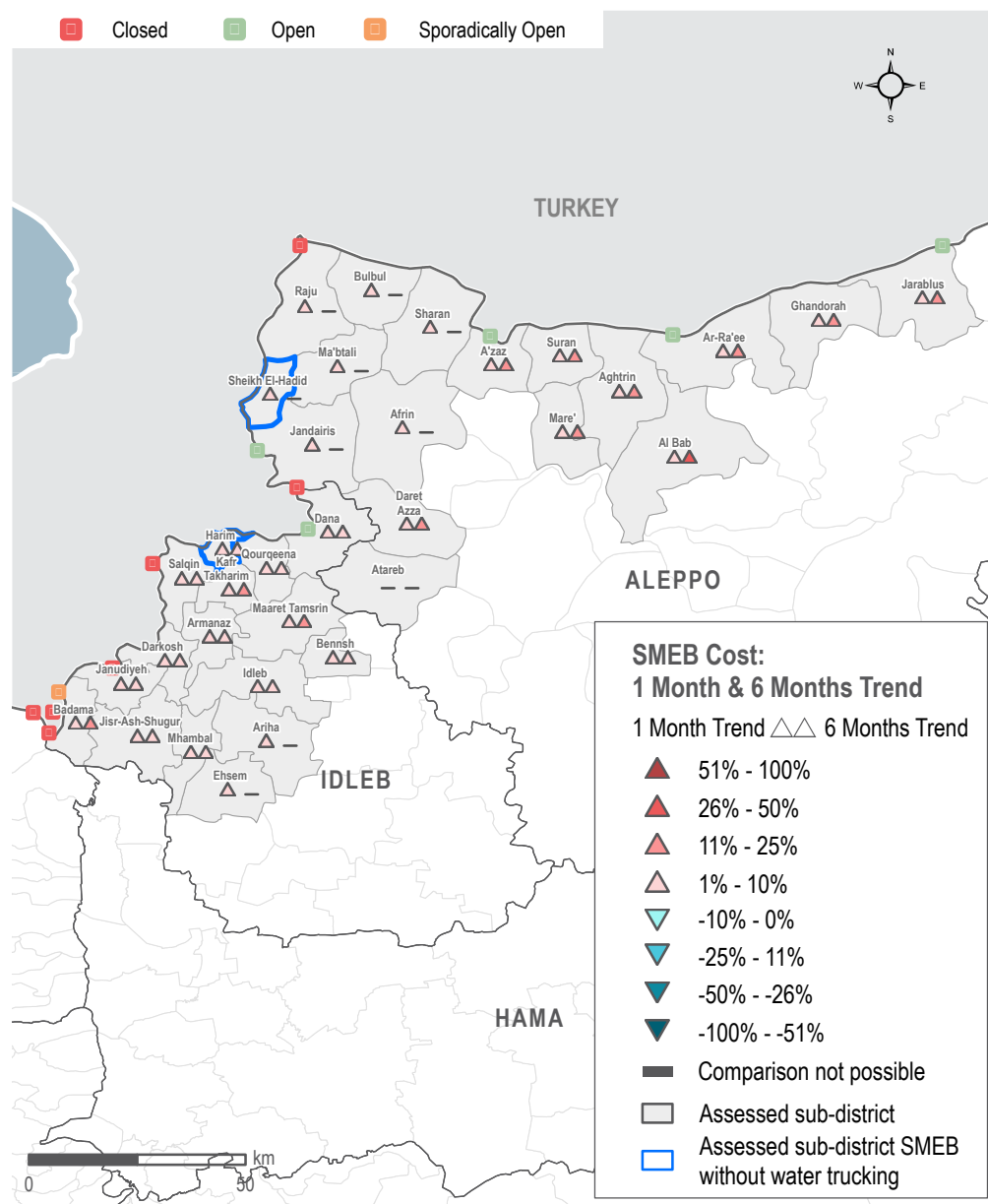
** For these sub-districts, all of the items' median prices rely on less than 3 observations.

Note: For price and change calculations, only the communities within a sub-district with consistent coverage across months are included. The above applies to all tables.

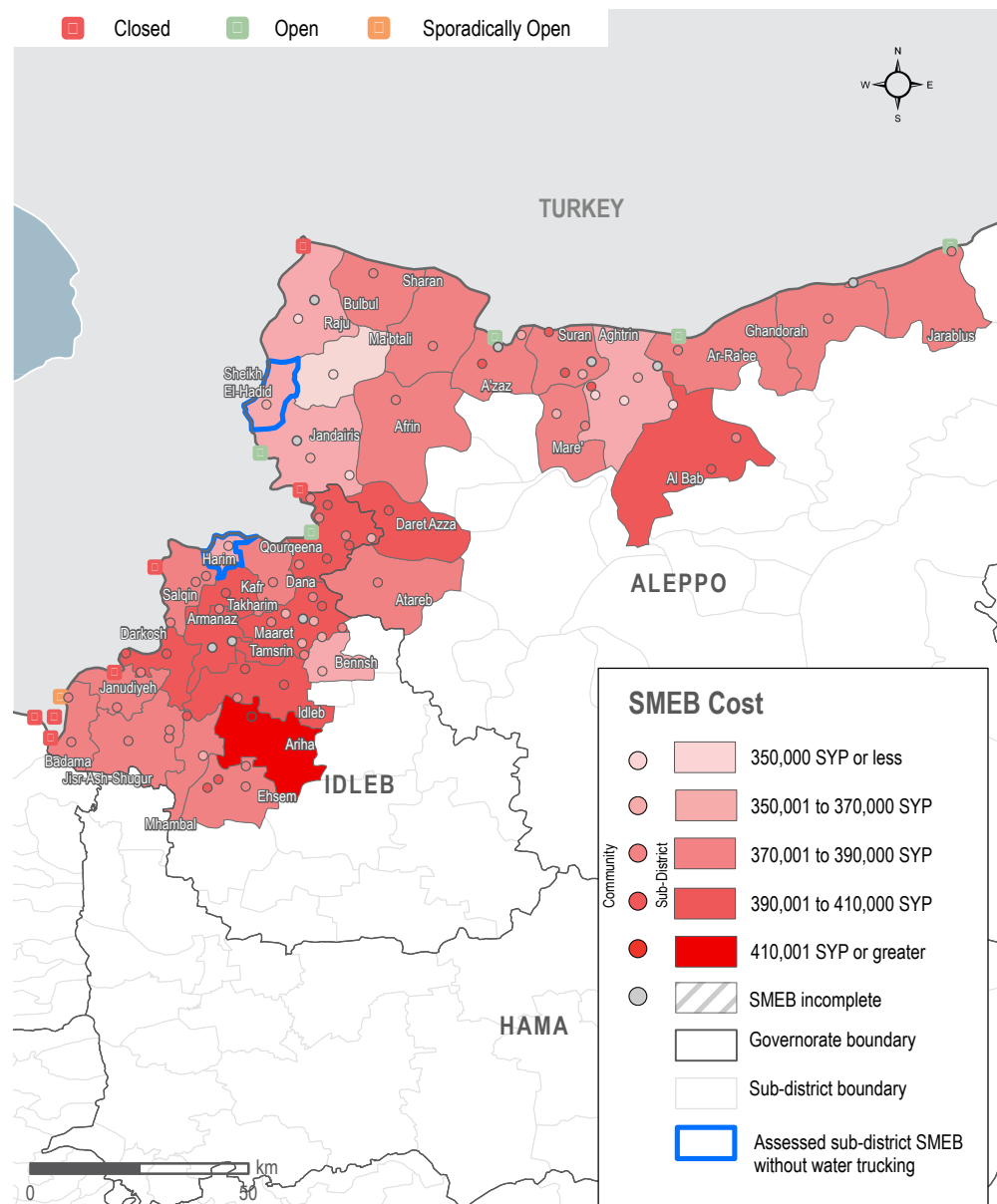
^{#3} See page 10 for further fuel data

^{#4} To compare SYP prices to USD or TRY, our [August 2021 dataset](#) provides informal exchange rates at the regional, district, subdistrict and community levels where data is available

SMEB Cost: 1 month and 6 months trend



SMEB cost ranges (SYP) by sub-districts and communities



NORTHWEST SYRIA - SMEB FOOD ITEMS

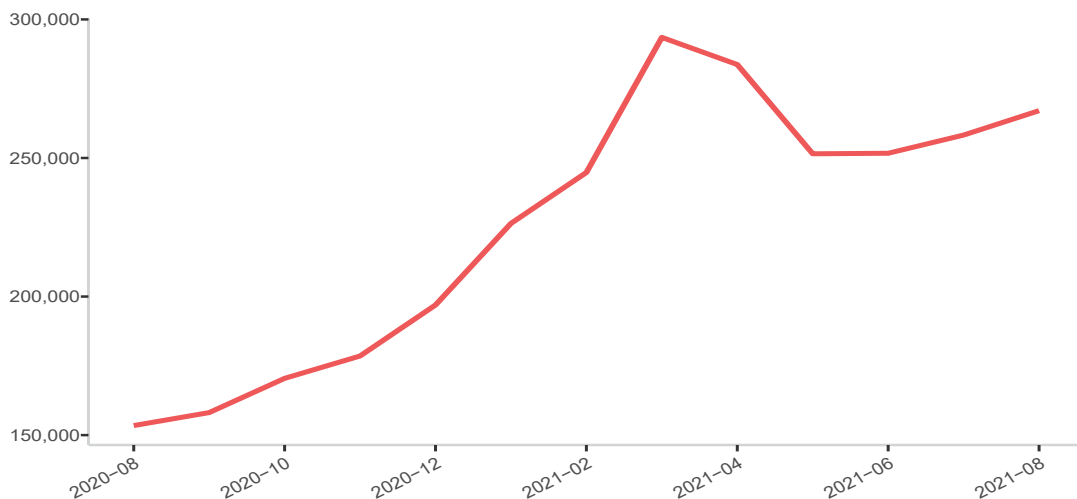
MEDIAN SMEB COST: FOOD ITEMS

Syrian Pounds

Sub-district	SMEB Food	One month change	Six month change	Sub-district	SMEB Food	One month change	Six month change
Northwest Syria	267,075	3%	8%	Harim	267,075	3%	5%
Afrin	276,933	5%	NA	Idleb	276,999	8%	13%
Aghtrin	252,180	4%	11%	Jandairis	260,165	9%	NA
Al Bab	262,051	0%	26%	Janudiyeh	259,370	-1%	4%
Ariha	297,920	6%	NA	Jarablus	265,975	4%	14%
Armanaz	277,204	5%	0%	Jisr-Ash-Shugur	267,688	8%	5%
Ar-Ra'ee	283,723	10%	21%	Kafr Takharim	288,484	8%	9%
Atareb**	265,525	4%	-3%	Maaret Tamsrin	267,180	1%	9%
A'zaz	269,730	6%	21%	Ma'btali	248,966	10%	NA
Badama	270,188	7%	23%	Mare'	256,388	6%	10%
Bennsh*	264,875	3%	4%	Mhambal	276,228	4%	8%
Bulbul	266,745	3%	NA	Qourqeena	255,868	2%	7%
Dana	266,596	4%	4%	Raju	255,870	8%	NA
Daret Azza	285,910	7%	11%	Salqin	272,080	0%	6%
Darkosh	280,173	4%	5%	Sharan*	264,513	2%	NA
Ehsem	274,088	5%	NA	Sheikh El-Hadid	270,275	2%	NA
Ghandorah	263,199	8%	23%	Suran	261,575	2%	10%

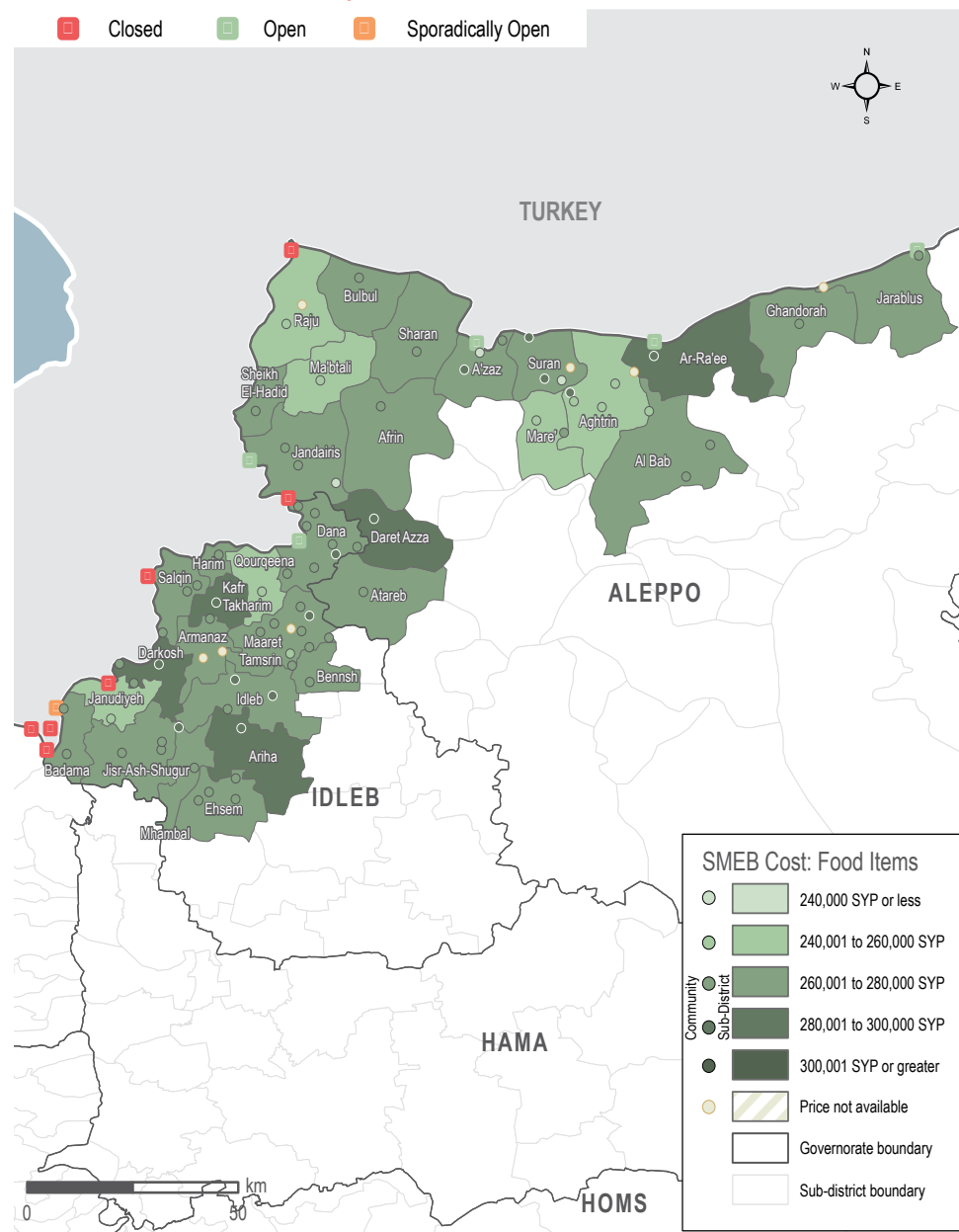
MEDIAN SMEB COST: FOOD ITEMS, BY MONTH

Syrian Pounds



SMEB FOOD ITEMS' COST

Sub-districts & Communities, Syrian Pounds



SMEB FOOD COMPONENT 267,075 SYP (82 USD)^{#5}

One month price change: **increase of 3%**

Six month price change: **increase of 8%**

Highest % of surveyed vendors reporting a SMEB food item as unavailable in their community/neighbourhood: 3% for chicken

Highest % of surveyed vendors reporting item as unavailable in their community/neighbourhood for previous month: 3% for chicken

There was an increase in price for all fruit and vegetables, the vast majority of bulk foods and eggs. There was no change for the price of salt, and there was a decrease in the price of chicken. At the regional level, food prices increased in line with a 3% depreciation of the Syrian pound. However, water trucking increased much faster than expected at 11%, even as transport fuel prices remained stable with only a 1% increase. For a deeper, national overview of the Agricultural context in Syria, please view the [FAO Agriculture Input and Commodity Bulletin: July 2021](#).

SMEB VEGETABLE COMPONENT 9,120 SYP (2.81 USD)

One month price change: **increase of 14%**

Six month price change: **decrease of 34%**

- Potatoes: increased by **28%**
- Tomatoes: increased by **23%**
- Onions: increased by **21%**
- Cucumbers: increased by **13%**

REACH field teams attribute the price increases of seasonal vegetables to the end of the peak agricultural season which passed in July. Although prices are increasing, they remain lower than six months ago - before the agricultural season began.

SMEB BULK FOODS 118,290 SYP (36 USD)

One month price change: **increase of 6%**

Six month price change: **increase of 6%**

- Bulgur: increased by **11%**
- Red lentils: increased by **5%**
- Sugar: increased by **5%**
- Rice: increased by **5%**
- Tomato paste: increased by **3%**
- Salt: no change (**0%**)

Bulk food items saw price increases in August. According to REACH field teams, these items are typically imported. They are rarely produced locally, subjecting them to import fees and fluctuations of the SYP and TRY. According to the [Turkish Statistical Institute](#), the price of red lentils in Turkey increased notably in July, which may have contributed to the price increases in Northwest Syria in August. However, the strength of this correlation is uncertain since the prices of rice and sugar remained stable in Turkey in July.

FLOUR 1,300 SYP PER KILO (0.40 USD)

One month price change: **increase of 4%**

Six month price change: **increase of 8%**

% of surveyed vendors reporting flour as unavailable in their community/neighbourhood: 2%

Flour is typically imported from Turkey and is thus affected by a fluctuating exchange rate. According to the [Turkish Statistical Institute](#), both wheat and barley have seen price increases in Turkey throughout 2021.

BREAD 950 SYP PER 8 PIECE BUNDLE (0.29 USD)

One month price change: **increase of 3%**

Six month price change: **increase of 19%**

% of surveyed vendors reporting item as unavailable in their community/neighbourhood: 1%

Price fluctuations are attributed to both the appreciation of the SYP and general subsidies by the authorities. Prices for bread can vary between governorates:

- Aleppo: 873 SYP per bundle
- Idleb: 955 SYP per bundle

Wheat production has been hard hit by droughts across the middle east, "as rainfall received from the beginning of 2021 onwards did not compensate for the delayed onset and previously recorded deficits", according to the [World Food Programme](#).

CHICKEN 5,125 SYP PER KILO (1.58 USD)

One month price change: **decrease of 9%**

Six month price change: **increase of 5%**

% of surveyed vendors reporting item as unavailable in their community/neighbourhood: 3%

EGGS 6,930 SYP FOR 30 EGGS (2.13 USD)

One month price change: **increase of 10%**

Six month price change: **increase of 15%**

% of surveyed vendors reporting item as unavailable in their community/neighbourhood: 0%

COOKING FUELS

Kerosene and LP gas are the typical cooking and heating fuel in NWS, although Kerosene is much more widely available.

Manually Refined Kerosene:

2,064 SYP per litre (0.64 USD)

One month price change: **increase of 1%**

Six month price change: **increase of 9%**

% of surveyed vendors reporting item as unavailable in their community/neighbourhood: 75%

LP Gas:^{#6}

45,875 SYP per canister (14.1 USD)

One month price change: **increase of 1%**

Six month price change: **increase of 17%**

% of surveyed vendors reporting item as unavailable in their community/neighbourhood: 0%

^{#5} August informal regional exchange rate for NWS: 3,250 SYP

^{#6} Prices are taken for the cheapest available canister at the time of data collection, which is typically 20-25 litres.

NORTHWEST SYRIA - SMEB WATER TRUCKING

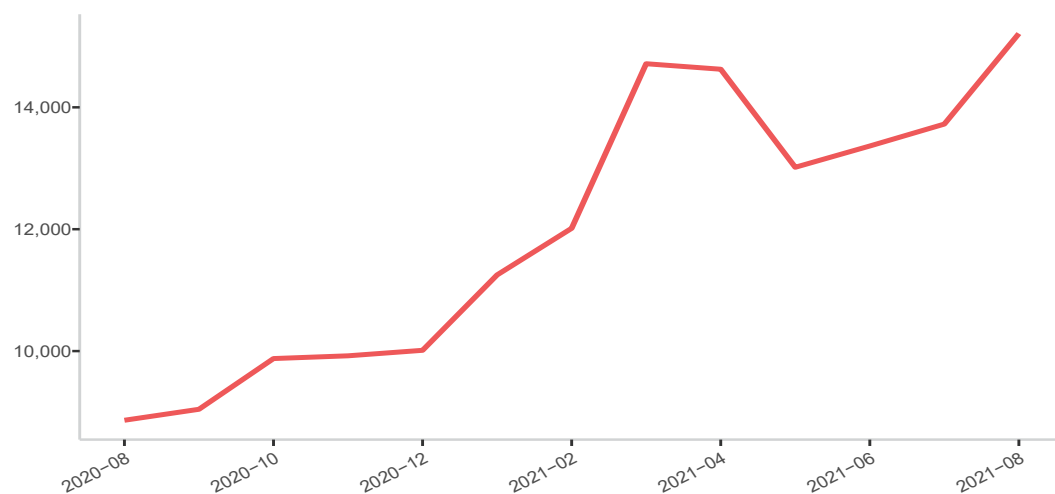
MEDIAN SMEB WATER TRUCKING PRICE

4,500L, Syrian Pounds

Sub-district	SMEB Water Truck	One month change	Six month change	Sub-district	SMEB Water Truck	One month change	Six month change
Northwest Syria	15,210	11%	26%	Harim**	NA	NA	NA
Afrin	17,258	0%	NA	Idleb	18,900	-9%	-5%
Aghtrin	17,055	17%	48%	Jandairis	10,620	-26%	NA
Al Bab	33,165	10%	122%	Janudiyeh	12,015	7%	-24%
Ariha	16,515	-1%	93%	Jarablus	21,263	3%	72%
Armanaz	13,295	4%	4%	Jisr-Ash-Shugur	16,200	20%	41%
Ar-Ra'ee	14,040	20%	17%	Kafr Takharim	16,906	24%	212%
Atareb**	10,260	-23%	1%	Maaret Tamsrin	12,465	-5%	4%
A'zaz	15,750	5%	34%	Ma'btali	15,210	-28%	NA
Badama	12,735	-3%	6%	Mare'	13,590	4%	2%
Bennsh	8,550	19%	-4%	Mhambal	15,615	0%	-11%
Bulbul	14,670	7%	NA	Qourqeena	18,920	25%	-16%
Dana	11,205	-11%	5%	Raju**	17,190	36%	NA
Daret Azza	10,800	-8%	21%	Salqin	15,480	12%	18%
Darkosh	13,185	-5%	-18%	Sharan	11,880	0%	NA
Ehsem	13,410	2%	NA	Sheikh El-Hadid**	NA	NA	NA
Ghandorah**	21,105	19%	88%	Suran	16,515	10%	-8%

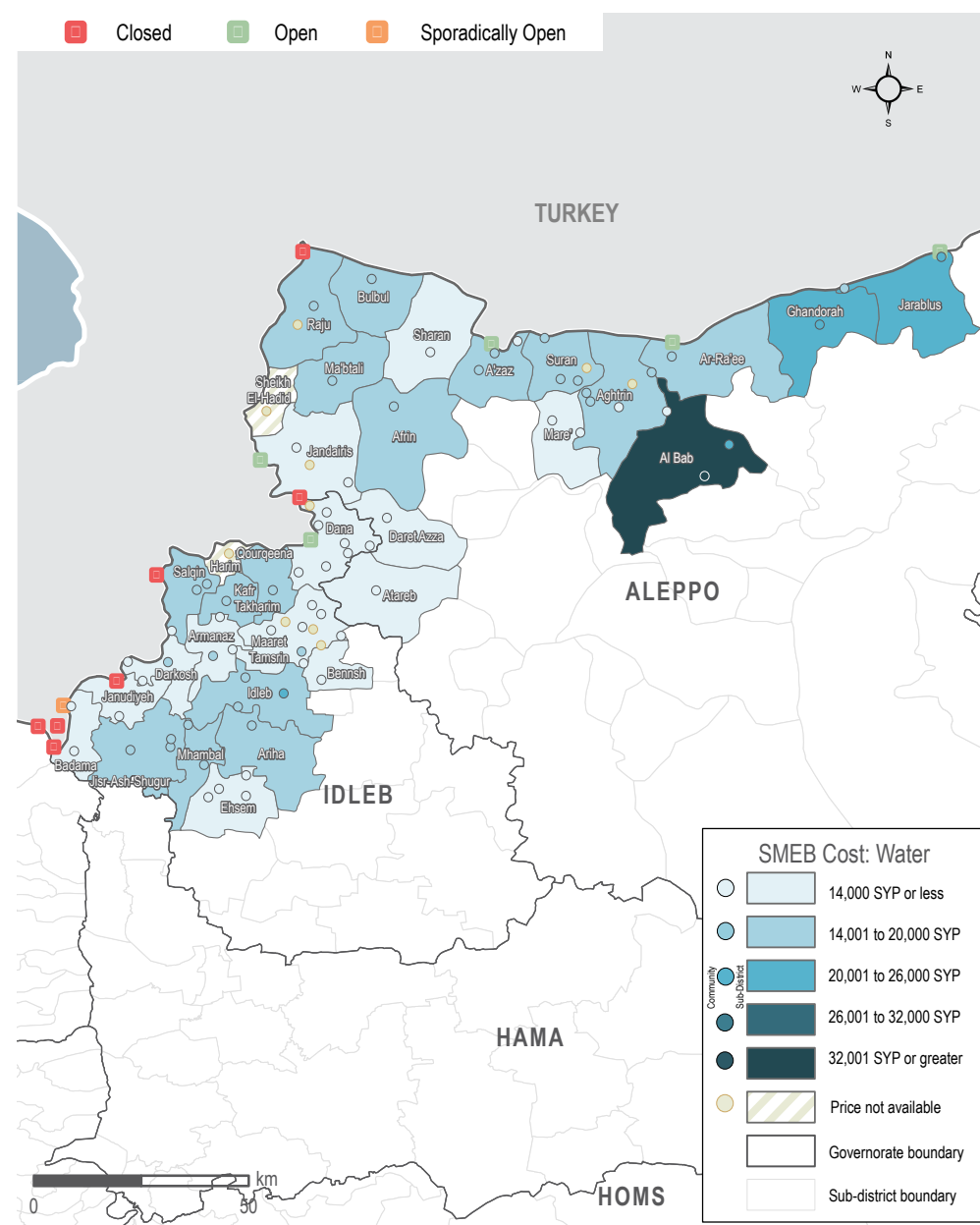
MEDIAN SMEB WATER TRUCKING COSTS, BY MONTH

Syrian Pounds



SMEB WATER TRUCKING COST

Sub-districts & Communities, Syrian Pounds



NORTHWEST SYRIA - SMEB HYGIENE ITEMS

MEDIAN SMEB HYGIENE ITEMS' PRICE

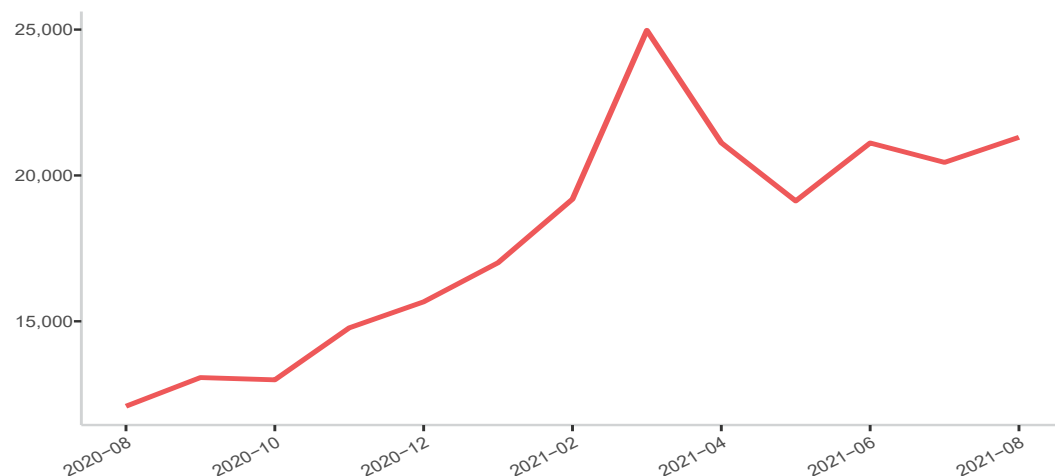
12 bars of soap, 4 packs of 10 sanitary pads, 200g of toothpaste, 3kg of laundry/dish soap, Syrian Pounds

Sub-district	SMEB Hygiene Items	One month change	Six month change
Northwest Syria	21,307	4%	10%
Afrin	19,825	6%	NA
Aghtrin	17,303	4%	28%
Al Bab	21,307	4%	37%
Ariha	27,325	20%	16%
Armanaz	20,684	3%	-3%
Ar-Ra'ee	20,912	6%	12%
Atareb**	15,426	NA	-43%
A'zaz	21,195	0%	39%
Badama	27,117	7%	32%
Bennsh	16,005	2%	-11%
Bulbul	27,089	6%	NA
Dana	25,300	15%	11%
Daret Azza	24,450	28%	5%
Darkosh	26,125	16%	15%
Ehsem	27,801	8%	NA
Ghandorah	18,825	9%	13%

Sub-district	SMEB Hygiene Items	One month change	Six month change
Harim	25,860	13%	23%
Idleb	21,705	27%	29%
Jandairis	19,250	9%	NA
Janudiyeh	28,300	18%	55%
Jarablus	20,170	1%	18%
Jisr-Ash-Shugur	24,035	8%	9%
Kafr Takharim	20,260	3%	7%
Maaret Tamsrin	26,056	10%	31%
Ma'btali	15,251	1%	NA
Mare'	20,000	10%	5%
Mhambal	18,837	11%	21%
Qourqeena	25,775	27%	17%
Raju	20,363	11%	NA
Salqin	21,415	-5%	11%
Sharan	26,483	3%	NA
Sheikh El-Hadid	28,048	8%	NA
Suran	20,331	-7%	3%

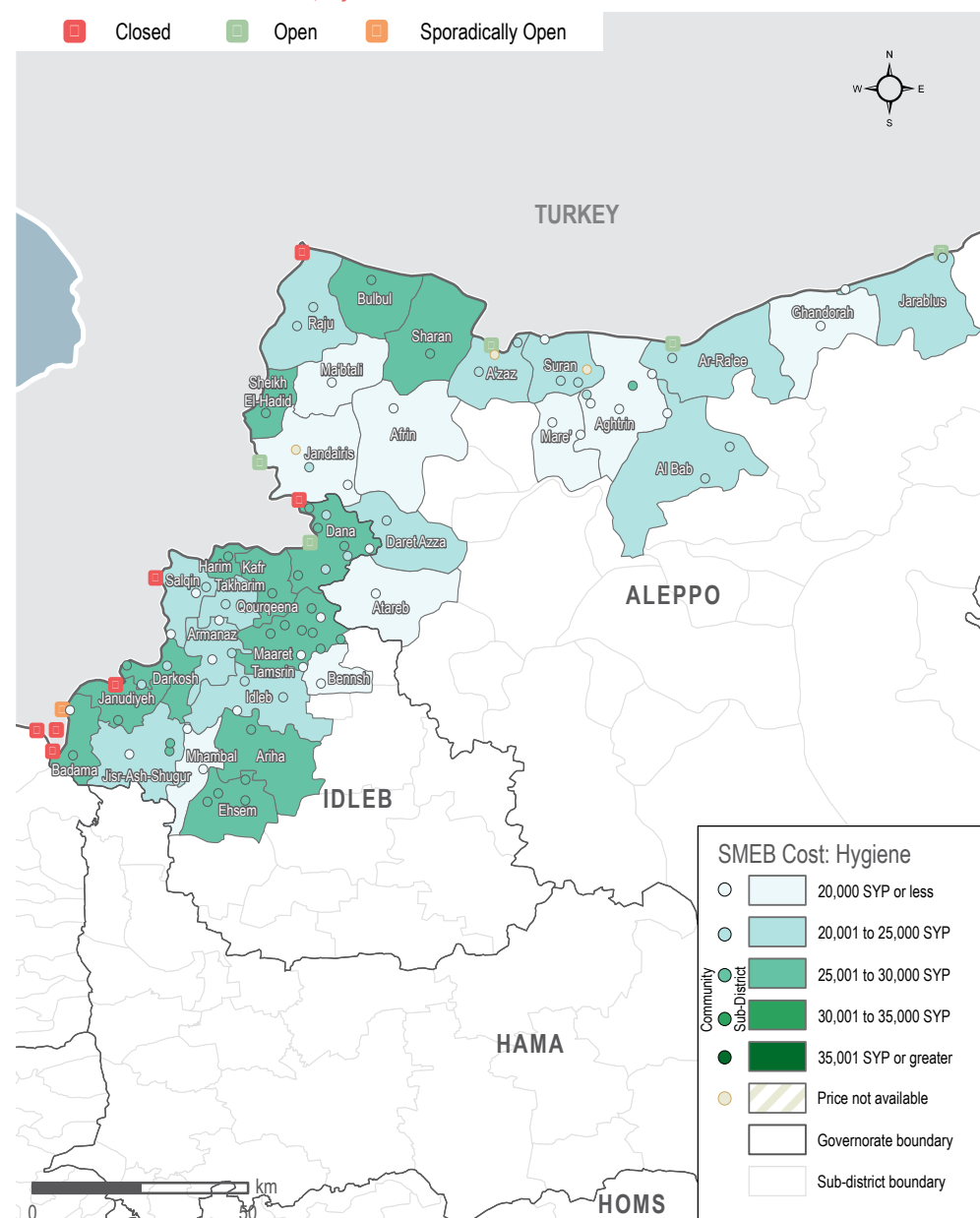
MEDIAN SMEB HYGIENE ITEMS' COSTS, BY MONTH

Syrian Pounds



SMEB HYGIENE ITEMS' COST

Sub-districts & Communities, Syrian Pounds



NORTHWEST SYRIA - SMEB CELLPHONE DATA

MEDIAN SMEB CELLPHONE DATA PRICE

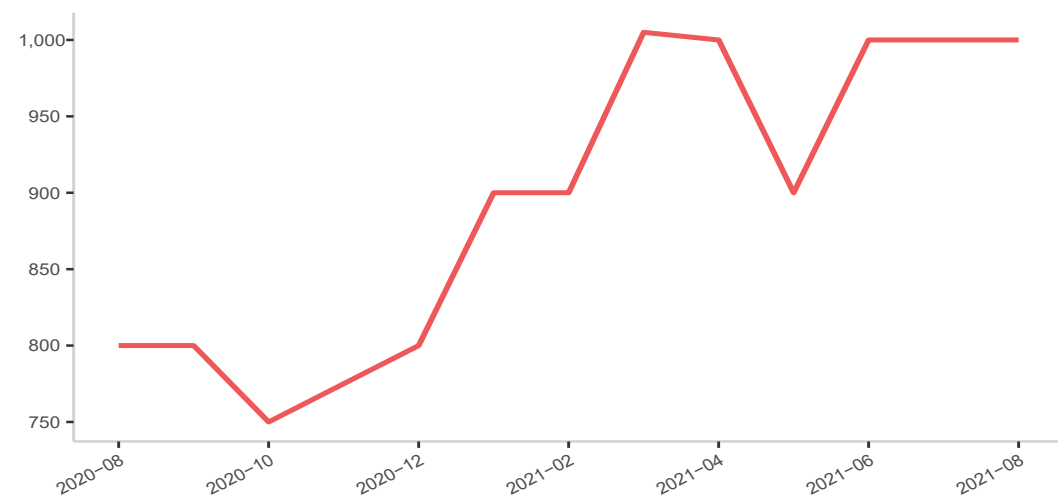
1GB data, Syrian Pounds

Sub-district	SMEB Data (1GB)	One month change	Six month change
Northwest Syria	1,000	0%	11%
Afrin	2,200	19%	NA
Aghtrin	1,000	11%	5%
Al Bab	1,225	40%	36%
Ariha	750	0%	-9%
Armanaz	750	24%	-10%
Ar-Ra'ee	780	4%	-3%
Atareb**	760	3%	-44%
A'zaz	1,000	0%	-9%
Badama	1,000	0%	11%
Bennsh	770	6%	-9%
Bulbul	950	-5%	NA
Dana	875	7%	-13%
Daret Azza	1,170	6%	-3%
Darkosh	975	3%	11%
Ehsem	1,125	13%	NA
Ghandorah	1,000	0%	-9%

Sub-district	SMEB Data (1GB)	One month change	Six month change
Harim	1,000	0%	0%
Idleb	770	54%	-4%
Jandairis	850	6%	NA
Janudiyeh	950	-5%	6%
Jarablus	1,000	0%	-9%
Jisr-Ash-Shugur	1,200	20%	33%
Kafr Takharim	1,078	11%	5%
Maaret Tamsrin	987	-1%	10%
Ma'btali	1,000	0%	NA
Mare'	1,000	11%	14%
Mhambal	800	0%	-6%
Qourqeena	975	16%	5%
Raju	1,800	3%	NA
Salqin	775	-3%	-14%
Sharan	1,100	10%	NA
Sheikh El-Hadid	1,000	0%	NA
Suran	1,000	-20%	10%

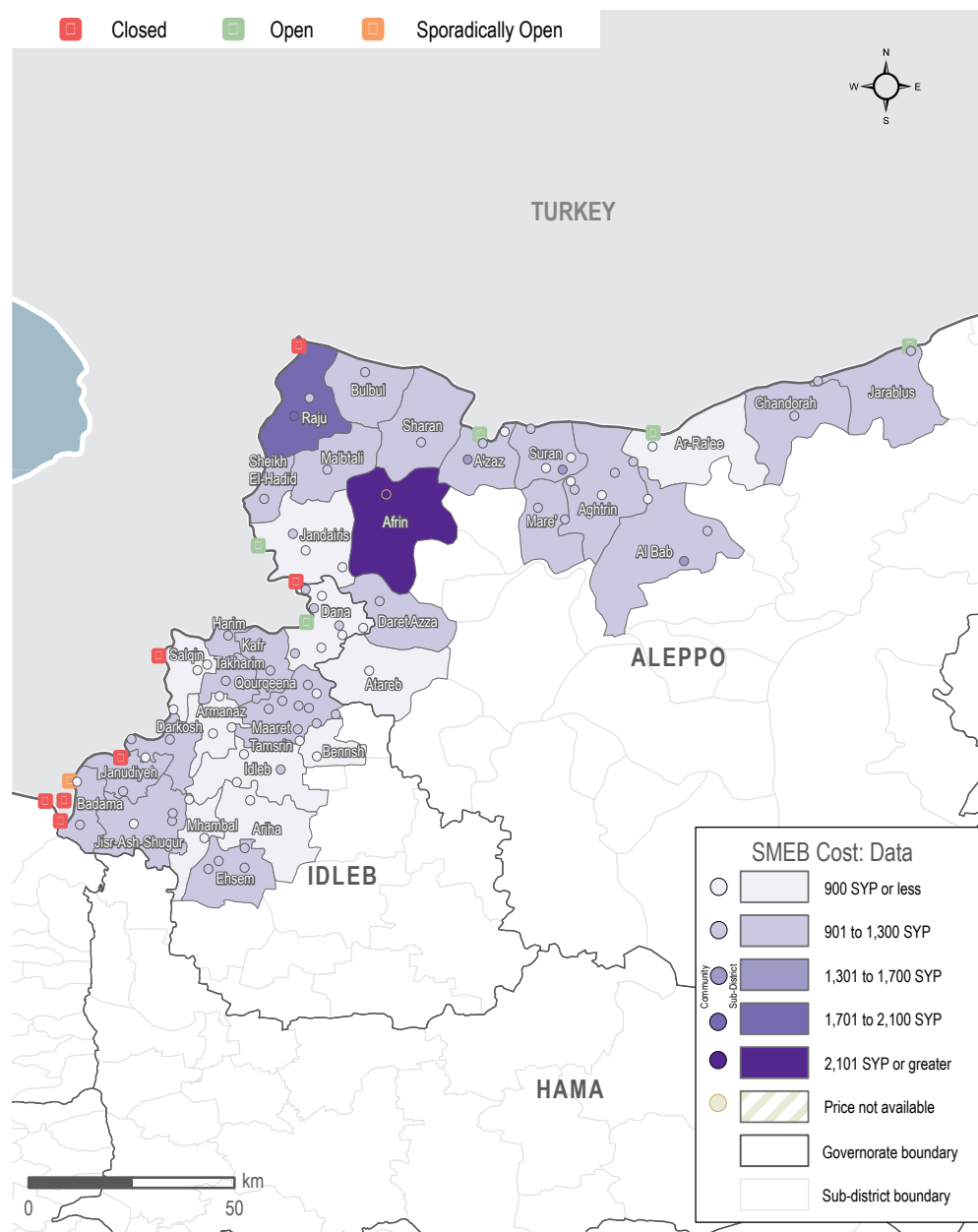
MEDIAN SMEB CELLPHONE DATA COST, BY MONTH

Syrian Pounds



SMEB CELLPHONE DATA COST

Sub-districts & Communities, Syrian Pounds



NORTHWEST SYRIA - SMEB COOKING FUEL

MEDIAN SMEB COOKING FUEL PRICE

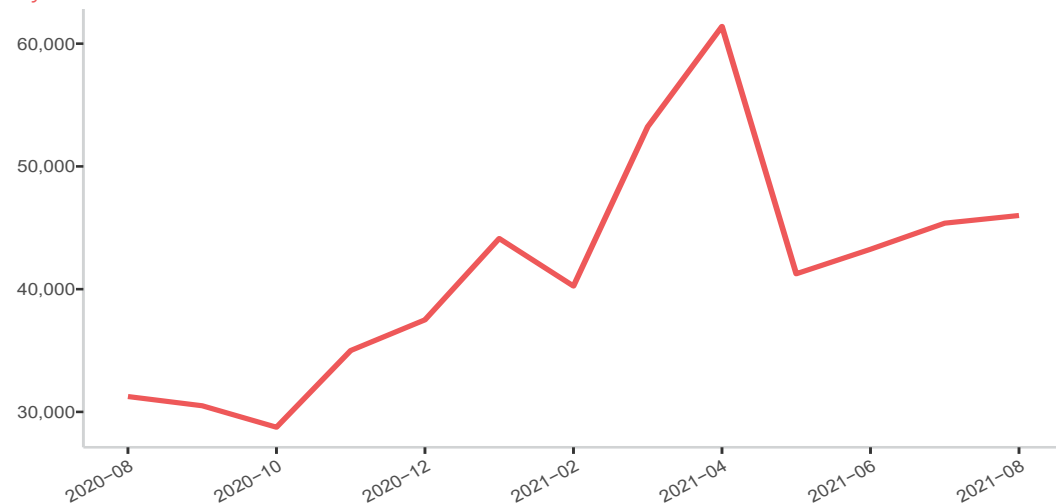
Kerosene 25L and LPG 20L, Syrian Pounds

Sub-district	SMEB Cooking Fuel	One month change	Six month change
Northwest Syria	46,000	1%	14%
Afrin**	40,625	5%	NA
Aghtrin	50,000	-2%	33%
Al Bab	53,200	5%	29%
Ariha*	45,750	1%	18%
Armanaz	63,750	-3%	18%
Ar-Ra'ee	39,000	-18%	4%
Atareb**	63,075	2%	20%
A'zaz	43,750	-3%	25%
Badama*	45,500	3%	-3%
Bennsh*	46,250	4%	16%
Bulbul*	46,000	1%	NA
Dana	65,625	5%	31%
Daret Azza*	46,250	2%	14%
Darkosh*	46,250	1%	17%
Ehsem*	45,938	1%	NA
Ghandorah*	45,000	0%	20%

Sub-district	SMEB Cooking Fuel	One month change	Six month change
Harim*	46,000	1%	-8%
Idleb*	45,719	2%	-27%
Jandairis*	43,750	-20%	NA
Janudiyeh*	46,000	2%	19%
Jarablus	47,500	0%	27%
Jisr-Ash-Shugur*	47,013	3%	-1%
Kafr Takharim*	45,984	3%	18%
Maaret Tamsrin*	63,075	3%	33%
Ma'btali*	44,125	-20%	NA
Mare'	53,750	5%	34%
Mhambal*	46,688	2%	15%
Qourqeenah*	45,875	2%	-6%
Raju*	42,781	1%	NA
Salqin*	45,750	0%	-17%
Sharan*	45,750	1%	NA
Sheikh El-Hadid*	41,875	0%	NA
Suran	50,000	-2%	33%

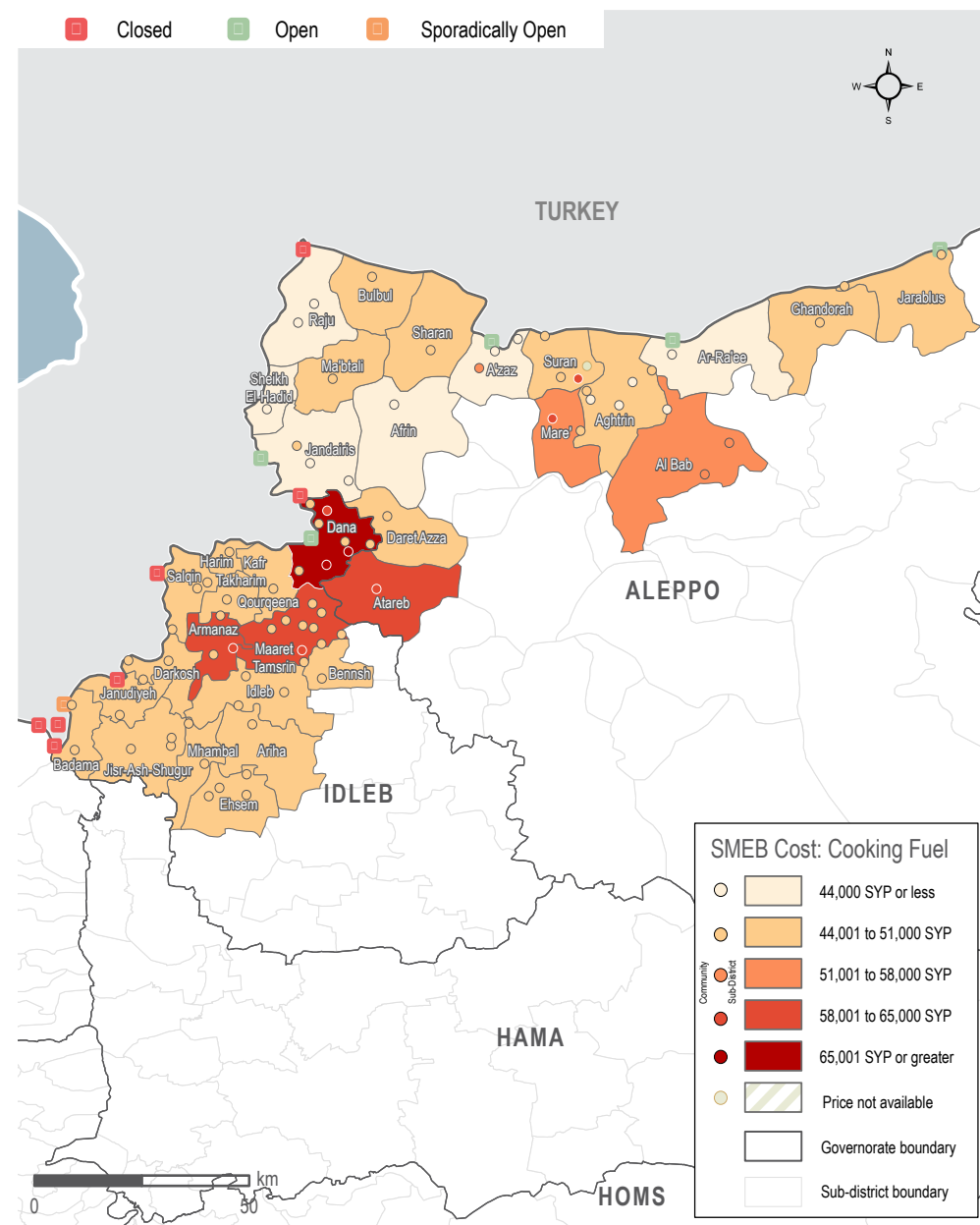
MEDIAN SMEB COOKING FUEL COSTS, BY MONTH

Syrian Pounds



SMEB COOKING FUEL COST

Sub-districts & Communities, Syrian Pounds



NORTHWEST SYRIA - TRANSPORT FUEL

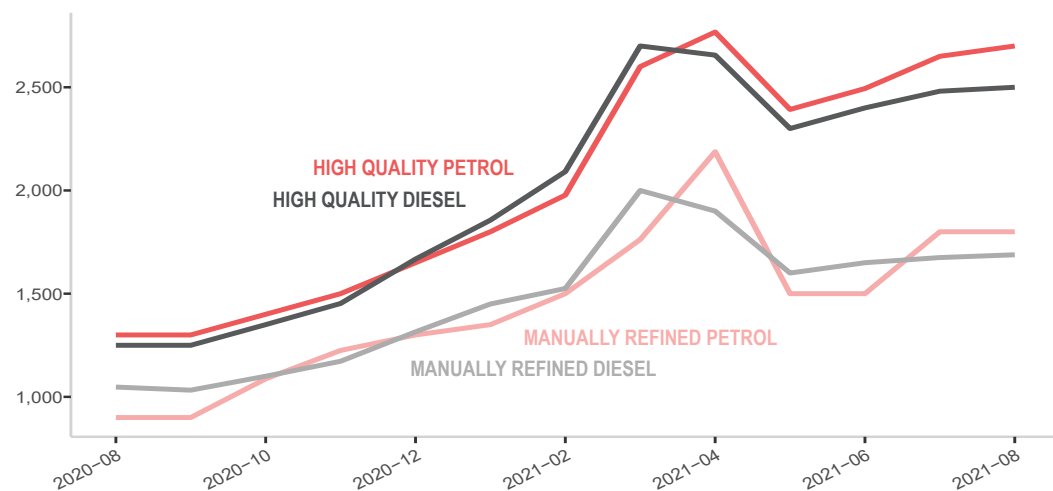
MEDIAN TRANSPORT FUEL PRICE

Diesel and Petrol, 1L (High Quality and Manually Refined), Syrian Pounds

Sub-district	Transport Fuel	One month change	Six month change	Sub-district	Transport Fuel	One month change	Six month change
Northwest Syria	2,292	1%	23%	Harim	2,350	-5%	27%
Afrin**	2,167	3%	NA	Idleb	2,292	1%	21%
Aghtrin	2,075	2%	26%	Jandairis	2,283	-2%	NA
Al Bab	2,068	0%	23%	Janudiyeh	2,483	1%	35%
Ariha*	2,483	-3%	28%	Jarablus	2,069	-5%	20%
Armanaz	2,331	0%	19%	Jisr-Ash-Shugur	2,435	5%	31%
Ar-Ra'ee	2,066	-1%	14%	Kafr Takharim	2,305	2%	26%
Atareb**	2,303	-5%	18%	Maaret Tamsrin	2,433	4%	32%
A'zaz	2,028	4%	22%	Ma'btali*	2,550	2%	NA
Badama	2,408	4%	27%	Mare'	2,050	-2%	19%
Bennsh	2,475	-4%	33%	Mhambal	2,349	1%	23%
Bulbul*	1,735	2%	NA	Qourqeena	2,277	-2%	21%
Dana	2,358	-1%	24%	Raju	2,113	-5%	NA
Daret Azza	2,233	-1%	17%	Salqin	2,308	-5%	22%
Darkosh	2,383	4%	28%	Sharan	2,200	6%	NA
Ehsem	2,350	4%	NA	Sheikh El-Hadid	2,133	4%	NA
Ghandorah	2,075	-2%	23%	Suran	2,078	1%	15%

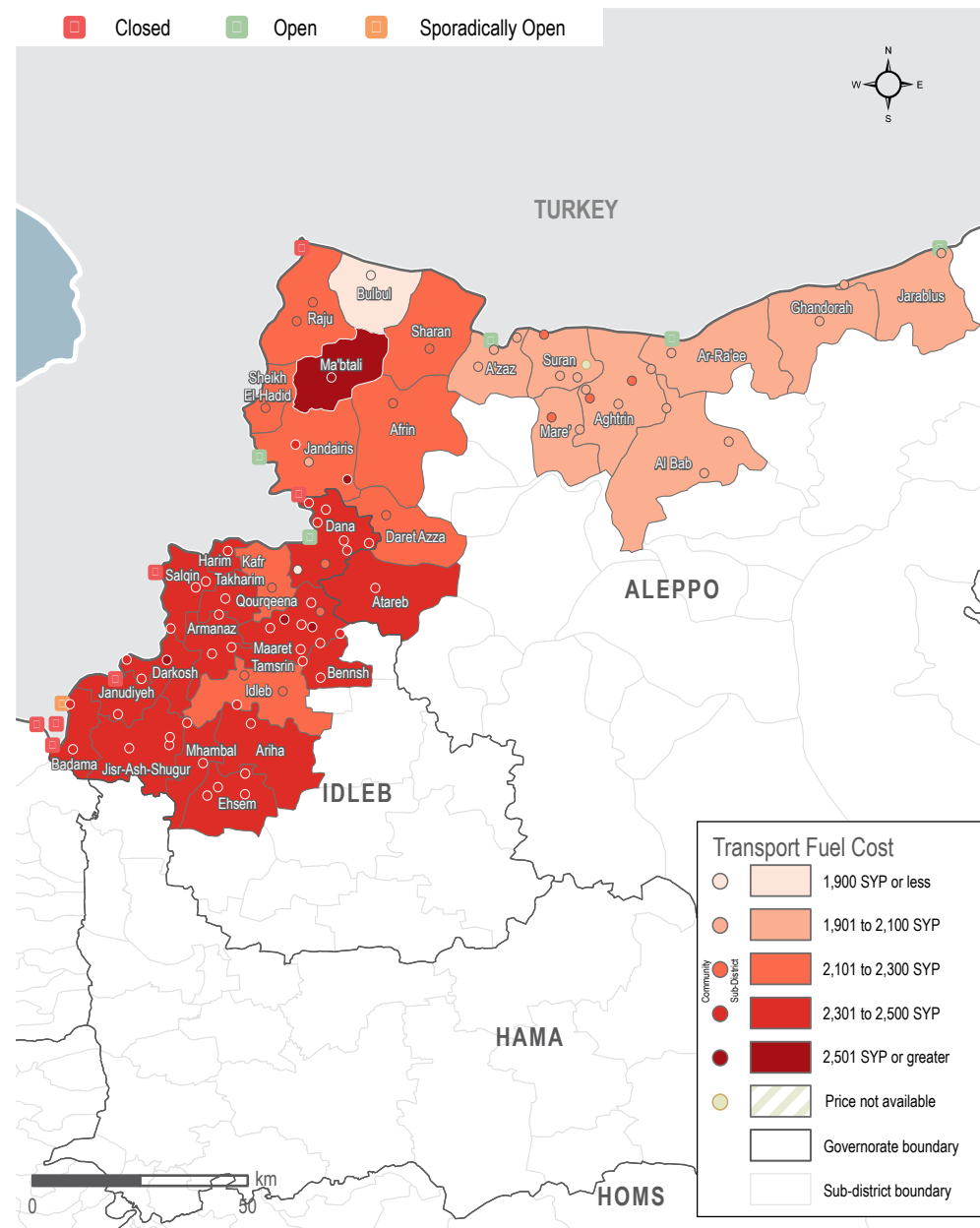
MEDIAN TRANSPORT FUEL COSTS, BY MONTH & TYPE

Syrian Pounds



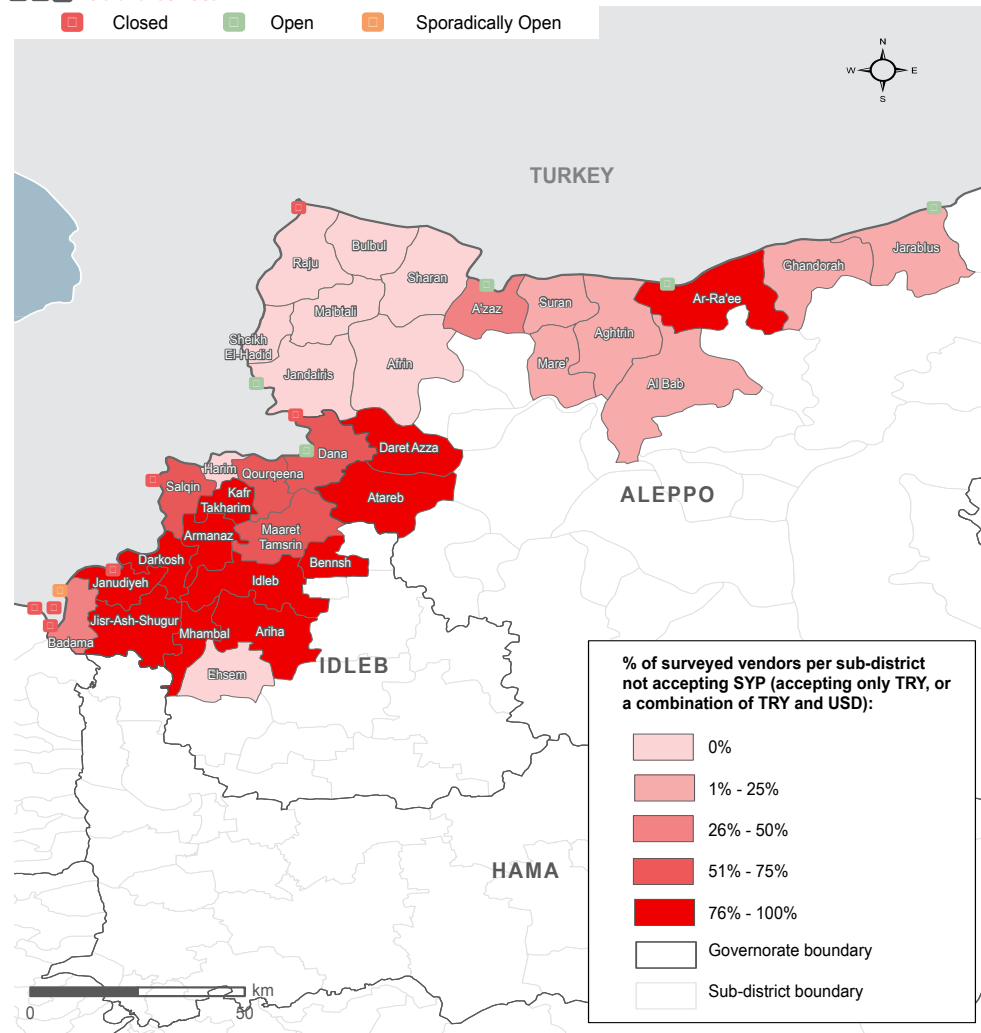
TRANSPORT FUEL COST

Sub-districts & Communities, Syrian Pounds



NORTHWEST SYRIA - MARKET FUNCTIONALITY

SURVEYED VENDORS NOT ACCEPTING SYRIAN POUNDS



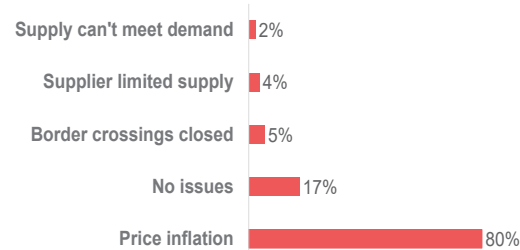
MARKET FUNCTIONALITY

Total surveyed vendors: 2,186
 Surveyed vendors reported shop closure: 8 shops = 0.4% of all surveyed shops.
 6 of these shops were in Idleb and 2 in Aleppo.
 One month change: **decrease of 0.2 percentage points (pp)**

SUPPLY CHALLENGES (SEE FIGURE 1)

Total surveyed vendors: 2,042
 % of vendors who reported facing supply challenges: 83%
 One month change for supply challenges: **no change (0 pp)**
 Most reported supply challenge: Price inflation 80%
 One month change for price inflation: **decrease of 1%**

Figure 1: Most commonly reported supply challenges by all surveyed vendors (2,042 respondents)



RESTOCKING (SEE FIGURE 2)

Number of surveyed vendors who were asked if they would be unable to restock if they were to run out of supplies: 2,183
 Surveyed vendors reporting that they would be unable to restock if they were to run out of supplies: 7 shops / 0.3% of all surveyed shops
 One month change for restocking: **no change (0 pp)**
 Surveyed vendors were asked after how many days they would hypothetically run out of stock if supplies were to be cut: Less than 3 days: 43%
 One month change for less than 3 days: **decrease of 1%**
 Across shop types, surveyed water trucking vendors (84%), vegetable vendors (76%) and butchers (76%) most commonly reported that they would run out in less than 3 days if unable to restock.
 Notably, 87% of water trucking vendors in Aleppo and 82% of water trucking vendors in Idleb reported that they would run out of supply in less than 3 days if supply lines were cut.

Figure 2: Reported number of days before all types of vendors would hypothetically run out of stock, if supply lines were to be cut (2,183 respondents)



AVAILABILITY OF USD BANKNOTES

Informal currency exchange vendors were asked about their stock levels for USD banknotes of different denominations.
 Surveyed currency vendors: 223
 Surveyed vendors reporting having limited stock of one or more USD denomination: 96%
 One month change: **no change (0 pp)**
 The majority of surveyed vendors reported having a limited stock of all denominations of USD banknotes less than 100 USD. See [August 2021 dataset](#) for further currency data.

CURRENCIES ACCEPTED

Aleppo: vendors most commonly reported selling items in both SYP and TRY (69%), and least commonly in TRY and USD (1%). SYP was not accepted in 18% of shops.
 Idleb: vendors in Idleb most commonly reported selling items in TRY only (61%), and least commonly in all currencies – TRY, SYP and USD only (1%) (see map left, and below chart). SYP was not accepted in 68% of shops.

Currencies Accepted	SYP only	TRY only	TRY & SYP	TRY & USD	TRY, SYP & USD	SYP not accepted
Northwest Syria	6%	44%	41%	4%	5%	48%
Aleppo governorate	3%	17%	69%	1%	10%	18%
Idleb governorate	8%	61%	23%	6%	1%	68%

NORTHWEST SYRIA - COVID-19



MEDIAN PRICE OF COVID-19 ITEMS

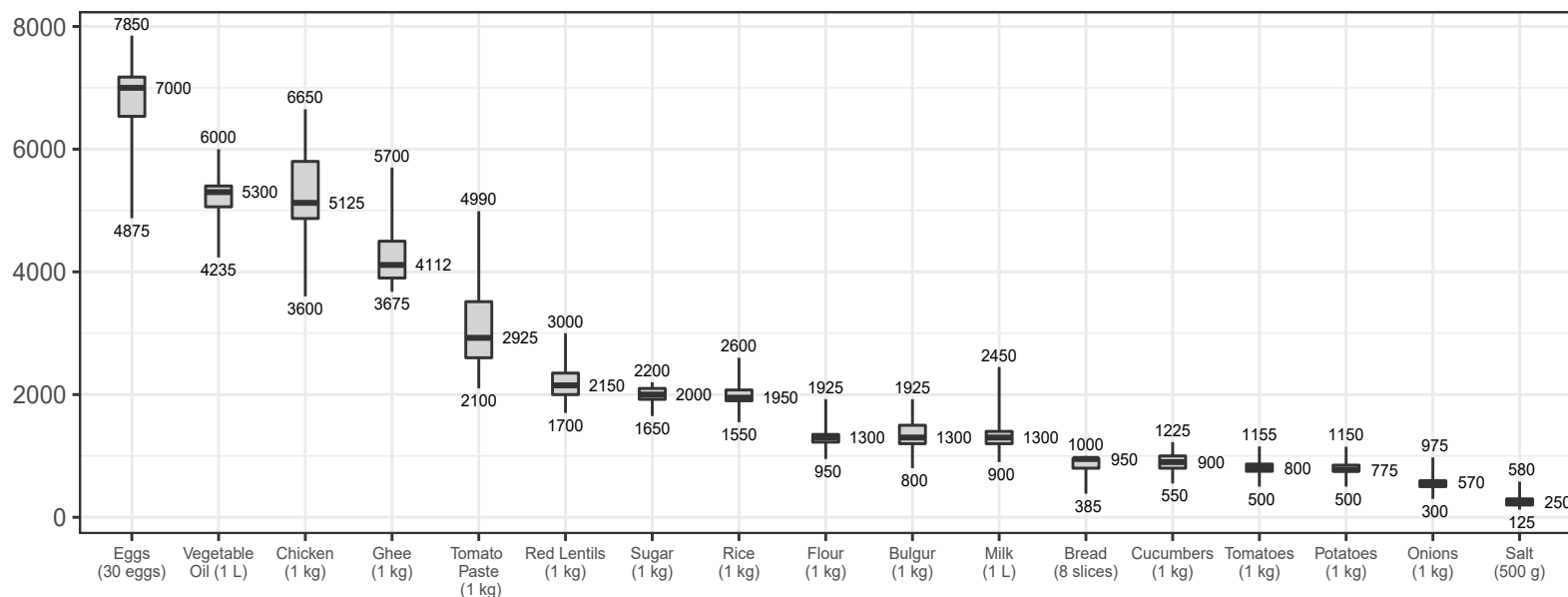
Syrian Pounds

Sub-district	Face mask (1 piece)	Plastic gloves (box of 100)	Sterile alcohol (1 litre)	Hand sanitiser (500 ml)	Bottled bleach (1 litre)	Trash bags (roll of 30)
Northwest Syria	380	22,800	8,775	3,484	1,700	3,263
Afrin	400	18,000	10,000	5,500	2,700	2,400
Aghtrin	300	26,000	9,135	3,032	1,875	3,400
Al Bab	280	26,000	9,000	2,800	1,910	3,045
Ariha	385	24,250	NA	NA	1,900	NA
Armanaz	385	26,500	10,144	3,850	1,648	3,250
Ar-Ra'ee	385	23,100	9,690	3,230	1,925	2,700
Atareb	380	22,000	17,000	7,000	1,900	2,900
A'zaz	385	25,800	9,240	3,820	1,962	3,775
Badama	350	20,500	6,500	4,000	1,700	3,000
Bennsh	385	24,000	9,625	1,812	1,550	4,550
Bulbul	235	19,950	6,850	3,400	1,675	3,312
Dana	385	23,750	9,350	3,500	1,700	3,500
Daret Azza	390	24,300	8,000	4,100	1,800	3,250
Darkosh	390	21,200	6,900	6,550	1,700	3,450
Ehsem	250	21,900	6,600	3,450	1,700	3,250
Ghandorah	300	25,000	8,000	3,200	1,900	2,100
Harim	300	19,800	6,700	3,300	1,750	3,450
Idleb	400	21,200	8,800	3,750	1,550	3,625
Jandairis	350	22,500	6,500	3,500	1,550	3,400
Janudiyeh	385	29,000	11,000	4,000	1,700	3,450
Jarablus	400	17,700	8,750	4,500	1,850	2,400
Jisr-Ash-Shugur	290	19,500	6,045	3,500	1,560	3,120
Kafr Takharim	385	17,000	6,550	5,775	1,550	3,000
Maaret Tamsrin	250	22,800	6,500	3,468	1,650	3,250
Ma'btali	300	28,250	9,250	2,000	1,500	3,500
Mare'	325	28,000	7,500	3,400	1,575	3,300
Mhambal	500	36,000	20,000	2,900	1,575	3,262
Qourqeena	250	19,800	6,500	3,400	1,950	3,100
Raju	392	22,100	9,550	3,900	1,125	NA
Salqin	385	20,000	10,000	3,900	1,700	3,000
Sharan	300	23,100	6,200	3,200	1,600	3,300
Sheikh El-Hadid	250	19,250	6,300	3,200	1,650	3,400
Suran	190	28,425	9,472	3,032	1,700	3,750

NORTHWEST SYRIA - DISTRIBUTION OF PRICES

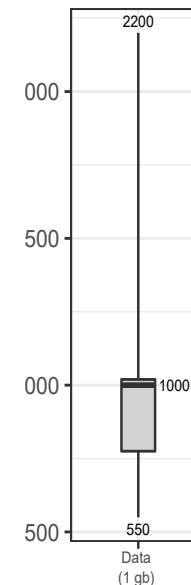
ASSESSED FOOD ITEMS

Syrian Pounds



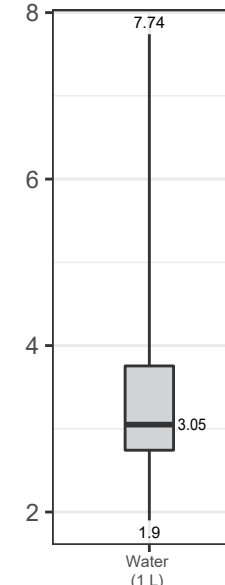
CELLPHONE DATA

Syrian Pounds



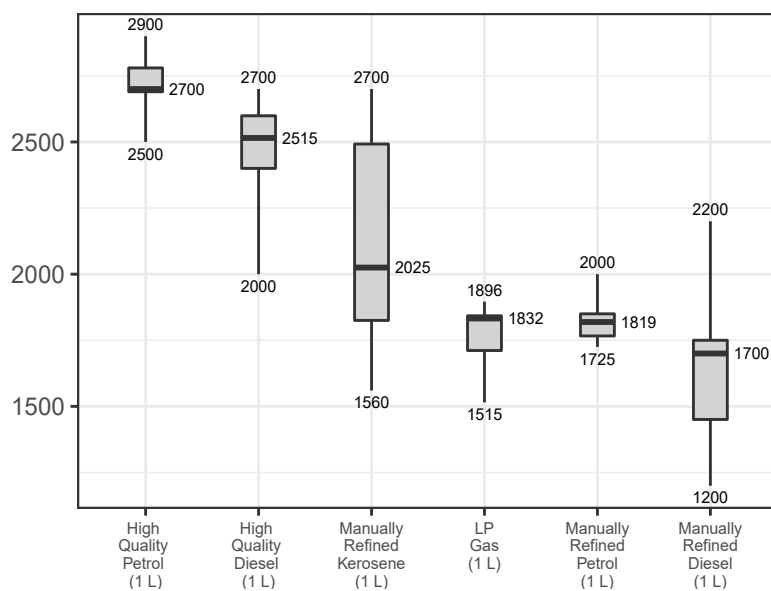
WATER TRUCKING

Syrian Pounds



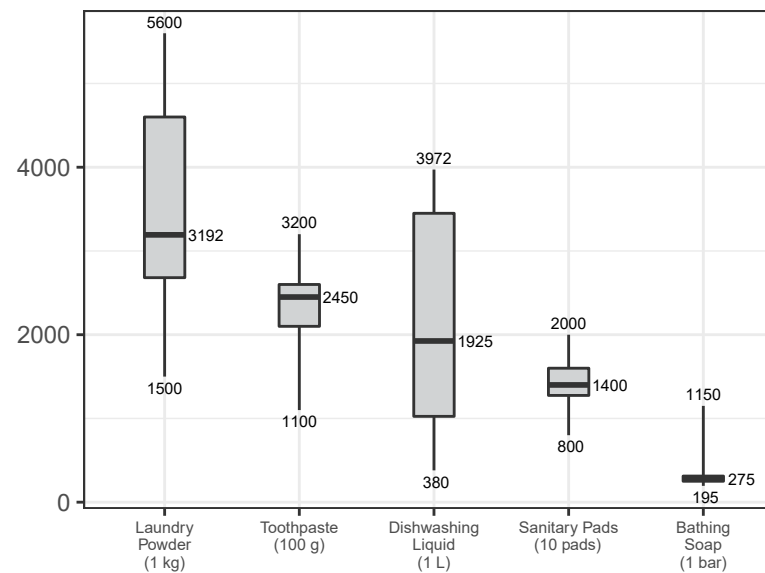
ASSESSED FUEL ITEMS

Syrian Pounds

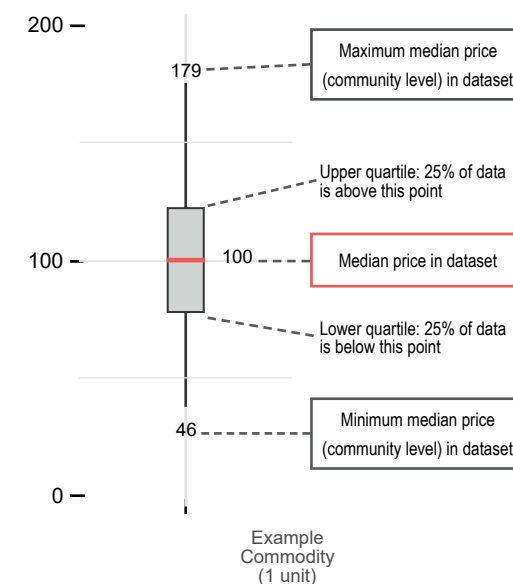


ASSESSED HYGIENE ITEMS

Syrian Pounds



READING BOXPLOTS



METHODOLOGY

In order to be included in the Syria Market Monitoring Exercise, markets must be permanent in nature, large enough to support at least two wholesalers, and diverse enough to provide a sufficient variety of goods and commodities. Additionally, the shops surveyed within each market must be housed in permanent structures and must sell certain items to be eligible for inclusion. Participating organisations train their enumerators on the Market Monitoring methodology and data collection tools using standard training materials developed by REACH. Each enumerator aims to assess three to five shops of each type in the main market in their assigned community/neighbourhood, using surveys to collect information about the cheapest prices of each item and whether there are any barriers in the supply chain. In sub-districts where direct surveying by enumerators is not possible, data collection is conducted remotely through key informants such as shop owners, suppliers and consumers. A survey form is deployed on KoBo each month to capture price and stock information from different types of establishments, including grocery stores, fuel traders, currency exchange shops, water trucking services and mobile phone shops, among others. Nearly all participating partners submit their data to these KoBo forms, using the KoBoCollect Android app to upload data. A small number of partners, by prior permission, collect data using fully harmonised data collection tools deployed on other platforms, then submit their raw data to REACH for standardisation, compilation and cleaning.

Following data collection, REACH compiles and cleans all partners' data, normalising prices and cross-checking outliers. The cleaned data is then analysed by SMEB costs, components of the SMEB, and by commodities. These trends are observed at the sub-district-level and, when possible, at the community-level. Prices are divided into quartiles and boxplots are created to assist CWG members in understanding the

distribution of prices across the northeast and northwest of Syria. To illustrate local variations in prices and availability, REACH uses the collected data to map the price of the SMEB in each sub-district and adds illustrations of surrounding border crossings, with data sourced from the United Nations Office for the Coordination of Humanitarian Affairs (OCHA). In addition, each SMEB component costs and transport fuel prices are graphed to visualise trends over time.

The cleaned datasets are available on the [Humanitarian Data Exchange](#) website and the [REACH Resource Centre](#) and are distributed to all participating partners, as well as to interested clusters and the broader humanitarian community.

Calculating 'median cheapest price'

The regional figures are calculated by taking the median of the minimum-reported prices of a region's sub-districts. In turn, the sub-district medians are calculated using the Market Monitoring base-data.

Calculating Survival Minimum Expenditure Basket (SMEB) costs

The cost of a SMEB is calculated for each assessed sub-district by calculating the median cheapest price of each SMEB commodity in that sub-district, then multiplying these medians by the number of units that an average Syrian household requires to purchase in a month. The composition of the SMEB can be found on [page 2](#). SMEB vegetables include potatoes, tomatoes, onions, and cucumbers.

Calculating price trends over time

One month and six-month price changes and trends in this factsheet are calculated only with the comparable assessed communities of a sub-district with consistent coverage across months. On the other hand, in the dataset, medians are calculated taking all assessed communities for the current month in consideration. Therefore, prices and percentage changes within the

tables of this factsheet may slightly differ from the current month's dataset medians. In the narrative, both regional median SMEB values are shared; the SMEB value including all assessed communities that specific month, and the SMEB value only taking in consideration communities with consistent coverage since the previous month.

Changes to coverage

Given security and access constraints in the south of Syria, data collection has been unable to take place since July 2018. Escalation of conflict in October 2019 has resulted in limited coverage in northwest Syria in the months following the escalation.

Challenges and limitations

As the Syria Market Monitoring Exercise currently includes 26 partners based in 2 hubs, achieving a consistent approach is inherently challenging. Participating organisations are therefore requested to adopt harmonised data collection methodologies and tools to ensure that the data uploaded is as accurate as possible. Since this exercise collects data directly from vendors and relies on partner organisations for its wide coverage, Market Monitoring may sporadically lose coverage temporarily or for longer periods of time due to challenges in accessing locations or loss in the shared data collection capacity of the project. This impacts the ability to report on trends, as can be seen in the line graphs and 'NA' values in the tables.

ABOUT REACH

REACH Initiative facilitates the development of information tools and products that enhance the capacity of aid actors to make evidence-based decisions in emergency, recovery and development contexts. The methodologies used by REACH include primary data collection and in-depth analysis, and all activities are conducted through inter-agency aid coordination mechanisms. REACH is a joint initiative of IMPACT Initiatives, ACTED and the United Nations Institute for Training and Research - Operational Satellite Applications Programme (UNITAR-UNOSAT). For more information please visit our website:

www.reach-initiative.org. You can contact us directly at: geneva@reach-initiative.org and follow us on Twitter [@REACH_info](https://twitter.com/REACH_info).

ABOUT THE CASH WORKING GROUP

The Cash Working Group (CWG) was established in May 2014 to analyse the impact of the ongoing conflict on markets in Syria and guide the implementation of humanitarian cash and voucher programmes within those markets. REACH and the CWG have been partners on the Syria Market Monitoring Exercise since early 2015.

About REACH's COVID-19 response

As an initiative deployed in many vulnerable and crisis-affected countries, REACH is deeply concerned by the devastating impact the COVID-19 pandemic may have on the millions of affected people we seek to serve. REACH works with Cash Working Groups and Partners to provide up-to-date evidence to inform the humanitarian responses in the countries where we operate. COVID-19-relevant market monitoring and market assessments is a key area where REACH aims to leverage its existing expertise to help humanitarian actors understand the impact of changing restrictions on markets and trade. Updates regarding REACH's response to COVID-19 can be found in a [devoted thread](#) on the REACH website. Contact geneva@impact-initiatives.org for further information.