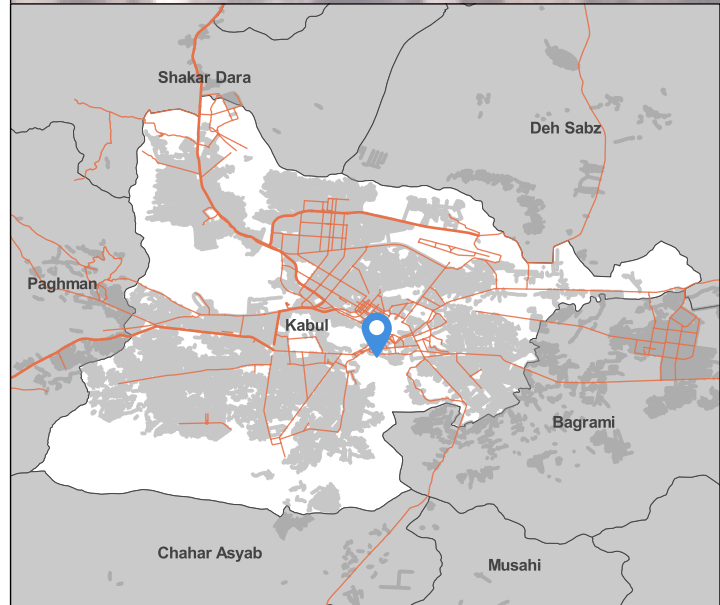
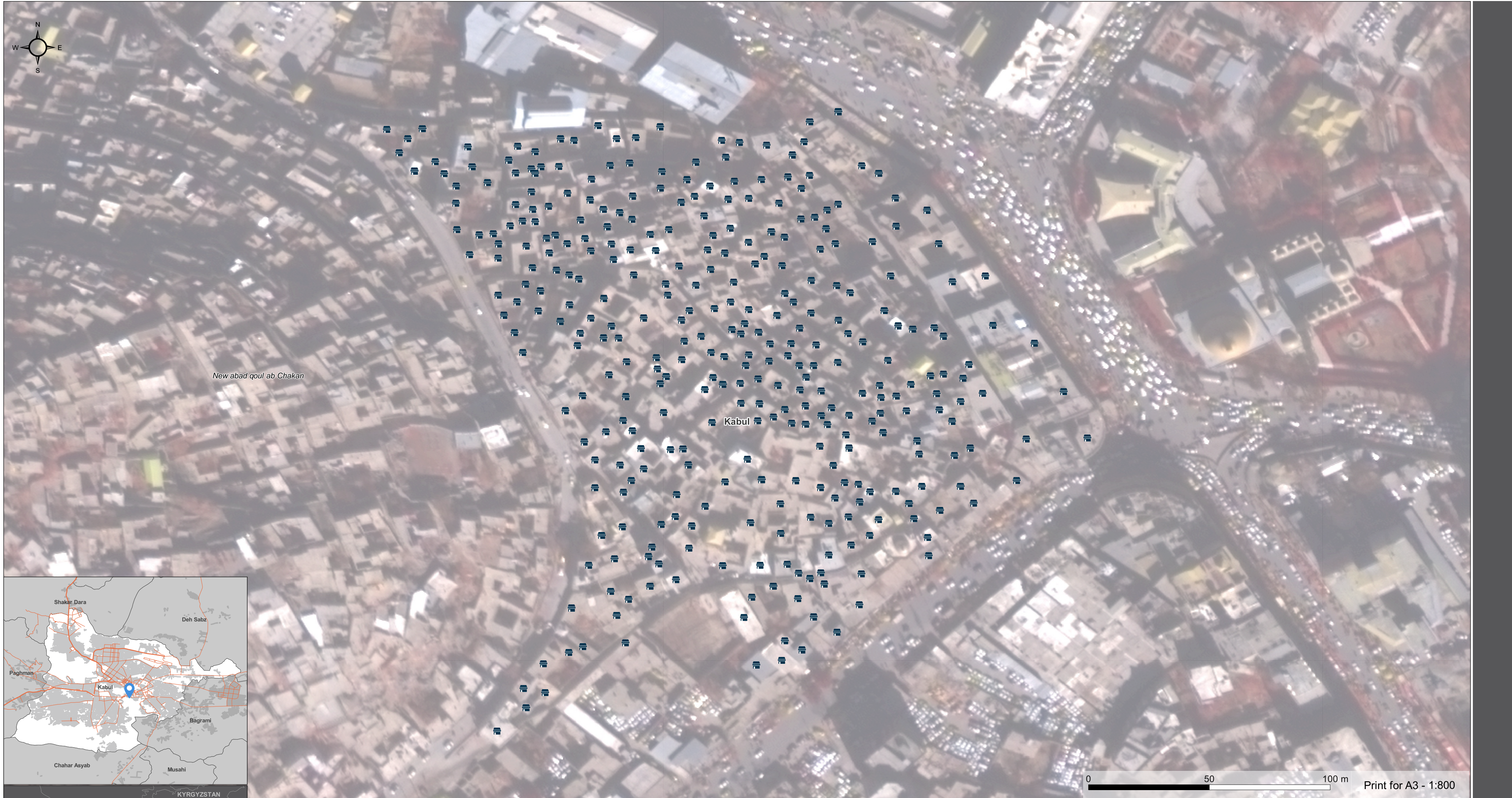


AFGHANISTAN - Central Zone - Kabul Province - Kabul District

Shelter types arrangement pattern - Urban area - June 2021

For Humanitarian Purposes Only
Production date : 01 Jun 2021



REACH conducted a review of local architecture in Afghanistan in November 2020, including building and maintenance practices, shelter and material choice, and environment and social influences on plot arrangement. As part of this assessment, with the support of UNOSAT, REACH conducted a satellite imagery analysis of different shelter types and their plot arrangements in both rural and urban contexts across all 7 regions of Afghanistan. Using remote sensing, different shelter types were identified and their plot arrangements and positioning of shelters were outlined, in order to provide clear examples of how households position their shelters across different regions and shelters in Afghanistan. All imagery and analysis was conducted in January and February 2020."

Shelter types

- Flat Roof
- Curved Roof
- Hut Roof
- Black Tent
- Cotton Tent
- Cave

Administrative

- Province boundary
- District boundary

Shelter Type	Description
Black Tent	Collapsible tents made of woven goat hair panels, sometimes supported by woven reed mat walls. They are commonly used among nomadic peoples (kuchi).
Cotton Tent	Canvas tents are pre-manufactured or made by stitching pieces of cloth together and supported with poles.
Hut	Mobile shelters made of woven reed or tamarisk mats held by poles.
Curved Roof	Permanent shelters made of packed mud or bricks. The roof of the shelter is made of brick and is shaped like a dome or arch.
Flat Roof	Permanent shelter with mud, brick, or stone walls, and wood -supported flat roofs. These shelters are constructed with stone, timber, bricks, pakhsa, or a combination thereof.
Cave	Permanent shelter made from a natural void in the side of a hill, mountain, or cliff-face.

Data sources:
Shelter Types: UNOSAT
Admin Boundaries: AGCHO
Coordinate System: GCS WGS 1984
Contact: reach.mapping@impact-initiatives.org

Imagery:
Satellite Imagery: (GE01) from 01 February 2021
Copyright:©2021 DigitalGlobe
Source: US Department of State, Humanitarian Information Unit, NextView License

Note: Data, designations and boundaries contained on this map are not warranted to be error-free and do not imply acceptance by the REACH partners, associated, donors mentioned on this map.

Filename:
REACH_AFG_Map_KabulDistrict_PlotArrangementOfShelterTypes_01Jun2021_A3

