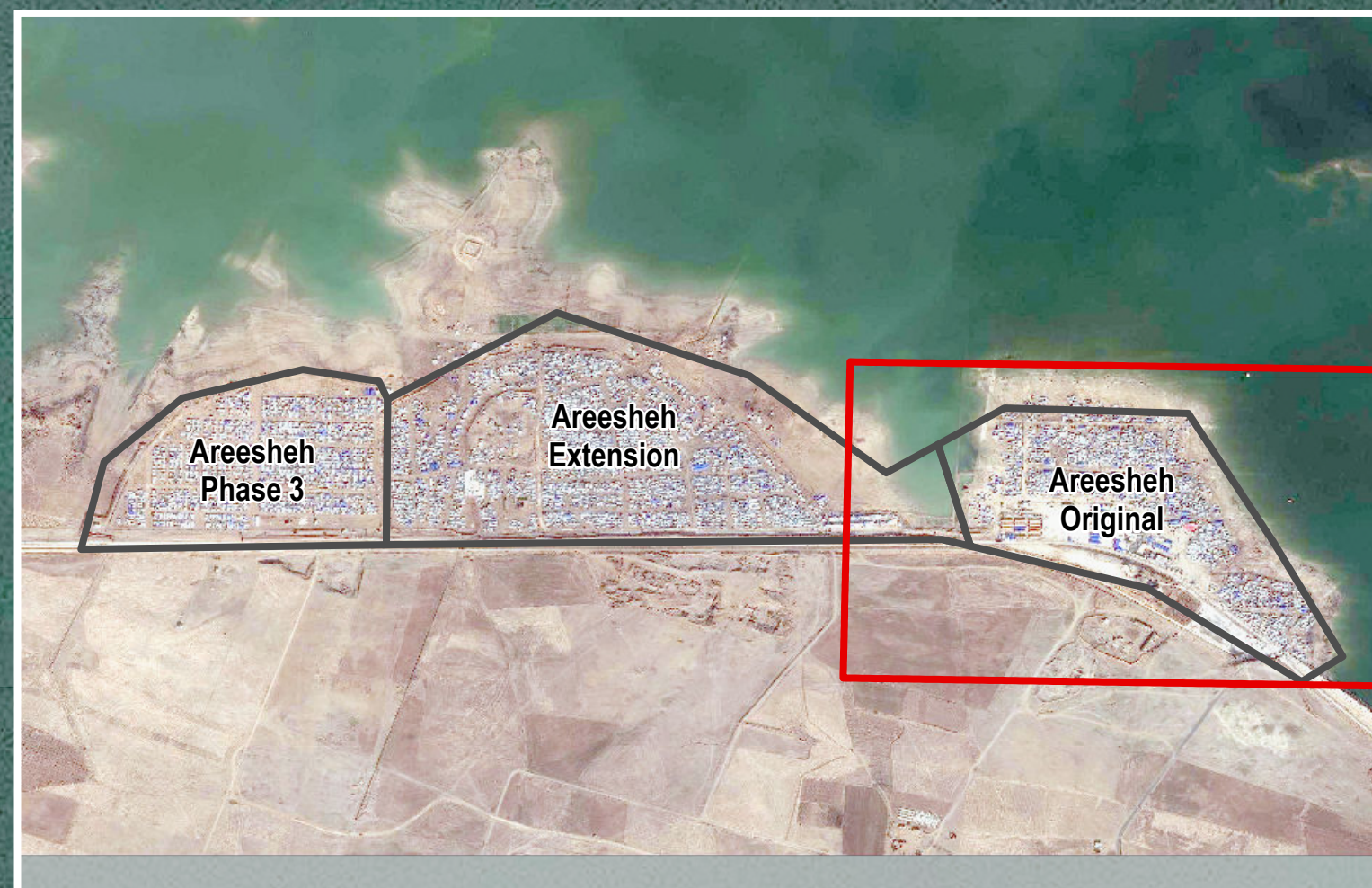


# SYRIA – Areesheh Original IDP Camp

## General Infrastructure – As of 2 March 2020

For Humanitarian Purposes Only  
Production date : 23 March 2020



**IMPORTANT:** camp infrastructure data collected 2 March 2020, satellite imagery obtained 8 December 2019

<b>L</b> Latrines: 145 6 need maintenance (4%) 23 need rehabilitation (16%) 122 have locks (84%) 8 female-only (5%)	<b>W</b> Water tanks: 1m <sup>3</sup> : 9 2m <sup>3</sup> : 55 5m <sup>3</sup> : 1  Total tank capacity: 124m <sup>3</sup>
<b>S</b> Showers: 0	

**General infrastructure**

- Camp entrance
- Block
- Sector
- Camp boundary

- Mosque
- Kitchen
- Kitchen (used as a shelter)
- Camp management
- Child-friendly space
- Distribution
- Education
- Market
- Mass tent
- UN / NGO office

**Sanitation infrastructure**

Water tank capacity

- 1 m<sup>3</sup>
- 2 m<sup>3</sup>
- 5 m<sup>3</sup>

Latrines

- 1 latrine
- 2-4 latrines
- 5-7 latrines
- 8+ latrines

- NGO clinic
- School
- Services
- Storage

Projection: WGS 1984 UTM Zone 37N  
Contact: [mena.reach@impactinitiatives.org](mailto:mena.reach@impactinitiatives.org)  
Data Sources:  
Infrastructure: REACH  
Satellite imagery: WorldView-2 from 8 December 2019  
Copyright: © DigitalGlobe 2019  
Source: US Department of State, Humanitarian Information Unit,  
NextView license  
File name:  
REACH\_SYR\_Camps\_Areesheh\_Original\_March20\_A0

Note: Data, designations and boundaries contained on this map are not warranted to be error-free and do not imply acceptance by the REACH partners, associates, donors mentioned on this map.