

# NORTHWEST SYRIA MARKET MONITORING EXERCISE

Snapshot: 5th-11th July 2021

## INTRODUCTION

To inform humanitarian cash programming, REACH in partnership with the northeast (NES) and northwest (NWS) Syria Cash Working Group (CWG) conducts monthly Market Monitoring Exercises in northern Syria to assess the availability and prices of 36 basic commodities that are typically sold in markets and consumed by average Syrian households, including food and non-food items, water, fuel, and cell phone data.

Of these, 18 items comprise the Survival Minimum Expenditure Basket (SMEB; see below), which represents the minimum, culturally adjusted items required to support a 6-person household for a month.

The accompanying data is disseminated monthly and is distributed through partners across the humanitarian community. See REACH Resource Centre for the [July 2021 dataset](#).

### Coverage and data collection dates

In July 2021, REACH and partners covered:

- 2 governorates
- 9 districts
- 33 subdistricts
- 79 communities
- 2,178 individual shops

In light of the fluctuation of the Syrian Pound (SYP)'s value and resulting market disruption, prices should be seen as representative only of the markets and dates where and when information was collected (5-11th July 2021).

### Partners

Data collection for this month was conducted by REACH and the following partners:

- ATAA
- GOAL
- People in Need
- Solidarités International
- Violet
- CWG NWS

## KEY DEVELOPMENTS

### NWS SMEB Basket Price Increase

Syrian Pound (SYP)

SMEB July value: 368,856 SYP

One month change (compared to June): **increase of 3%**

Six month change (compared to January): **increase of 16%**

United States Dollar (USD)

SMEB July value: 117 USD

One month change: **increase of 4%**

Six month change: **increase of 5%**

The year 2021 continues to have the highest recorded SMEB in SYP in the Market Monitoring exercise, attributed to the protracted hyperinflation of the Syrian economy. The SMEB in 2021 has ranged between 113-117 USD and is now the highest recorded cost in USD since May 2019.

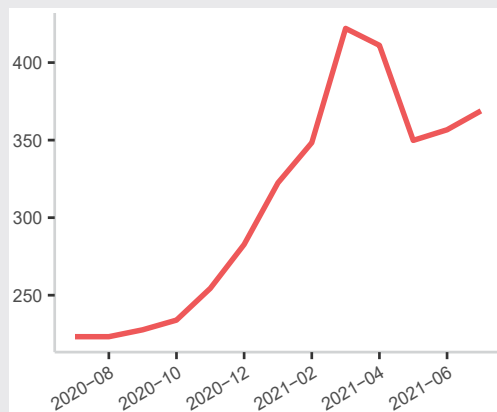
### MEDIAN SMEB COST FOR NWS

**368,856 SYP (117 USD)**

NWS COVERAGE: IDLEB, WESTERN & NORTHERN ALEPPO GOVERNORATES

### MEDIAN SMEB COSTS, BY MONTH

Thousand Syrian Pounds



### SMEB Water Trucking Price Increase <sup>#1</sup>

NWS average: 13,725 SYP per 4,500 litres

One month price change: **increase of 3%**

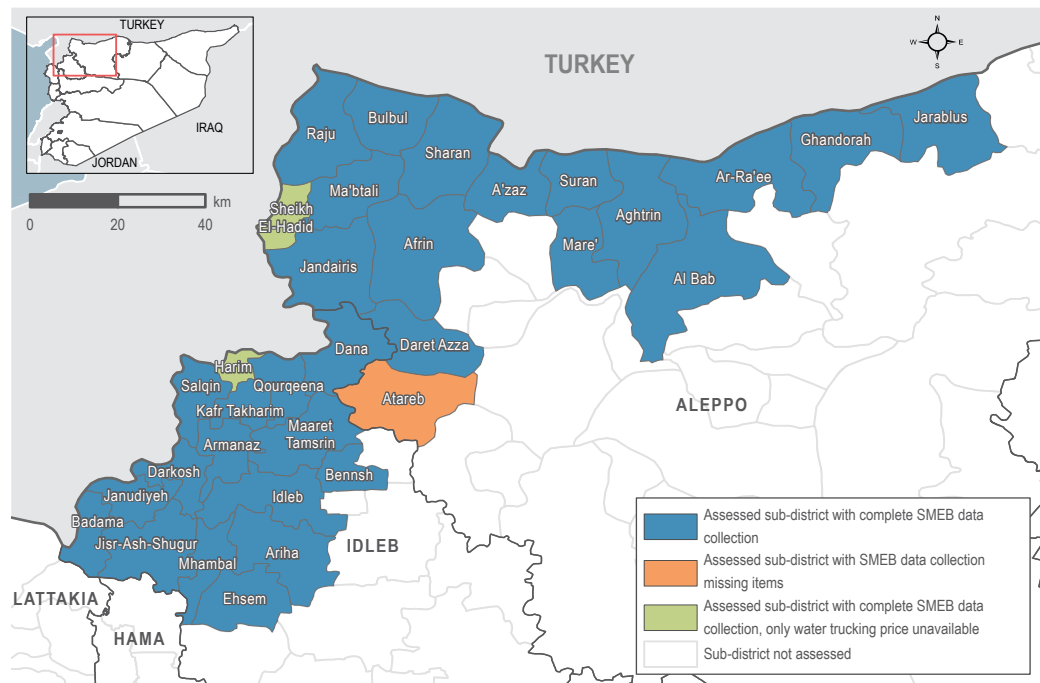
Six month price change: **increase of 22%**

% of surveyed vendors reporting water trucking as unavailable in their community/neighbourhood: 0%

Water prices were at their highest ever at the start of 2021. Prices fell in the spring between March and May but have been gradually increasing each month since then. The "harsh weather conditions and low rainfall levels" are an ever growing threat to the availability of both clean water and food for many, according to the [WFP mVAM bulleting no.55: May 2021](#). Water trucking is the main source of clean water for most individuals, yet prices are currently erratic across governorates.

- Aleppo: 14,468 SYP
- Idleb: 13,500 SYP

## ASSESSED AREAS AND COVERAGE



<sup>#1</sup> Equates to 25L per person for day. See page 6 for further water trucking data

# NORTHWEST SYRIA - KEY DEVELOPMENTS AND OVERVIEW

## MEDIAN SMEB COSTS & CHANGES

Syrian Pounds

Sub-district	SMEB	One month change	Six month change
<b>Northwest Syria</b>	<b>368,856</b>	<b>3%</b>	<b>16%</b>
Afrin	364,939	3%	36%
Aghtrin	348,715	-1%	20%
Al Bab	391,729	7%	32%
Ariha	392,969	-2%	NA
Armanaz	390,854	1%	11%
Ar-Ra'ee	363,466	7%	27%
Atareb**	NA	NA	NA
A'zaz	362,317	3%	23%
Badama	362,630	2%	17%
Bennsh	349,645	7%	14%
Bulbul	370,318	4%	11%
Dana	380,581	1%	11%
Daret Azza	370,633	-3%	14%
Darkosh	379,190	7%	3%
Ehsem	371,867	-2%	NA
Ghandorah	349,676	0%	18%
Harim	353,738	2%	27%
Idleb	364,993	-5%	5%
Jandairis	351,455	0%	14%
Janudiyeh	370,243	4%	NA
Jarablus	370,644	1%	25%
Jisr-Ash-Shugur	356,121	0%	7%
Kafr Takharim	371,361	12%	16%
Maaret Tamsrin	391,480	4%	19%
Ma'btali	343,409	-1%	3%
Mare'	348,456	-2%	6%
Mhambal	372,019	1%	8%
Qourqeena	358,179	3%	5%
Raju	336,226	-6%	7%
Salqin	381,630	2%	11%
Sharan	367,812	4%	27%
Sheikh El-Hadid	358,511	4%	24%
Suran	369,901	5%	23%

## SURVIVAL MINIMUM EXPENDITURE BASKET (SMEB) CONTENTS

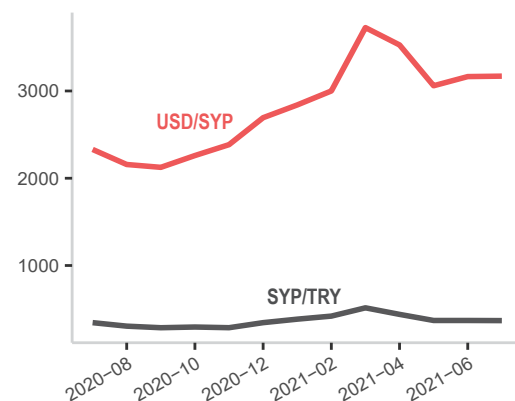
	Item	Quantity
Food Items	Bread	37 kg
	Bulgur	15 kg
	Chicken	6 kg
	Eggs	6 kg
	Fresh vegetables	12 kg
	Ghee/vegetable oil	7 kg/L
	Red lentils	15 kg
	Rice	19 kg
	Salt	1 kg
	Sugar	5 kg
	Tomato paste	6 kg
	Bathing soap	12 bars
	Laundry/dish soap	3 kg
	Sanitary pads	4 packs of 10
Hygiene items	Toothpaste	200 g
	Cooking fuel+	25 L
Fuel	Water trucking	4500 L
Water	Smartphone data	1 GB
Telecom	Float (other costs)++	7.5% total value
Other		

+ Kerosene in northern Syria

++ Float only applied to observations where prices of all SMEB contents could be collected.

Note: Lack of data for a SMEB item does not necessarily imply a shortage.

## EXCHANGE RATES, BY MONTH & CURRENCY



## KEY DEVELOPMENTS CONTINUED

### High Quality Fuel Prices Increase<sup>#2</sup>

The significant unavailability of lower quality (manually refined) but less expensive petrol - largely European fuel imported via Turkey - forces prices for high quality petrol to remain high, driven both by increasing demand as well as by fluctuating exchange rates of both the SYP and the TRY against the USD.

High Quality Diesel: 2,481 SYP per litre

One month price change: **increase of 3%**

Six month price change: **increase of 33%**

% of surveyed vendors reporting high quality diesel as unavailable in their community/neighbourhood: 3%

High Quality Petrol: 2,650 SYP per litre

One month price change: **increase of 6%**

Six month price change: **increase of 47%**

% of surveyed vendors reporting high quality petrol as unavailable in their community/neighbourhood: 3%

### Manually Refined Fuel Prices Increase

Manually refined fuels remain frequently unavailable in NWS due to low levels of import. Incidents in and around refineries further reduced the availability of manually refined fuels, according to REACH field teams. REACH field teams also reported that manually refined fuels are often used as transport fuel, as high quality fuels are rarely available.

Manually Refined Diesel: 1,675 SYP per litre

One month price change: **increase of 2%**

Six month price change: **increase of 17%**

% of surveyed vendors reporting manually refined diesel as unavailable in their community/neighbourhood: 7%

Manually Refined Petrol: 1,800 SYP per litre

One month price change: **increase of 20%**

Six month price change: **increase of 33%**

% of surveyed vendors reporting manually refined petrol as unavailable in their community/neighbourhood: 77%

### Exchange Rates Fall (see graph, left)<sup>#3</sup>

#### USD

Informal USD/SYP regional median exchange rate: 3,170 SYP to 1 USD

One month rate change: **increase of 0.2%**

Six month rate change: **increase of 12%**

#### TRY

Informal USD/TRY regional median exchange rate: 8.675 TRY to 1 USD

One month rate change: **increase of 0.3%**

Six month rate change: **increase of 16%**

In July, the SYP depreciated slightly against the USD. The highest exchange rate was recorded at 3,320 SYP for 1 USD in Kafr Safra community, in Aleppo governorate. The TRY also depreciated slightly against the USD, which impacts the price of the majority of items imported into the region from Turkey.

July saw only a minor increase in the key exchange rates but markets experienced more erratic, unexpected price fluctuations across different key items, suggesting that the anticipation of a [Cross Border Resolution](#) outcome had a minor impact across NWS markets.

\* For these sub-districts, more than 50% of the items' median prices rely on less than 3 observations.

\*\*For these sub-districts, all of the items' median prices rely on less than 3 observations.

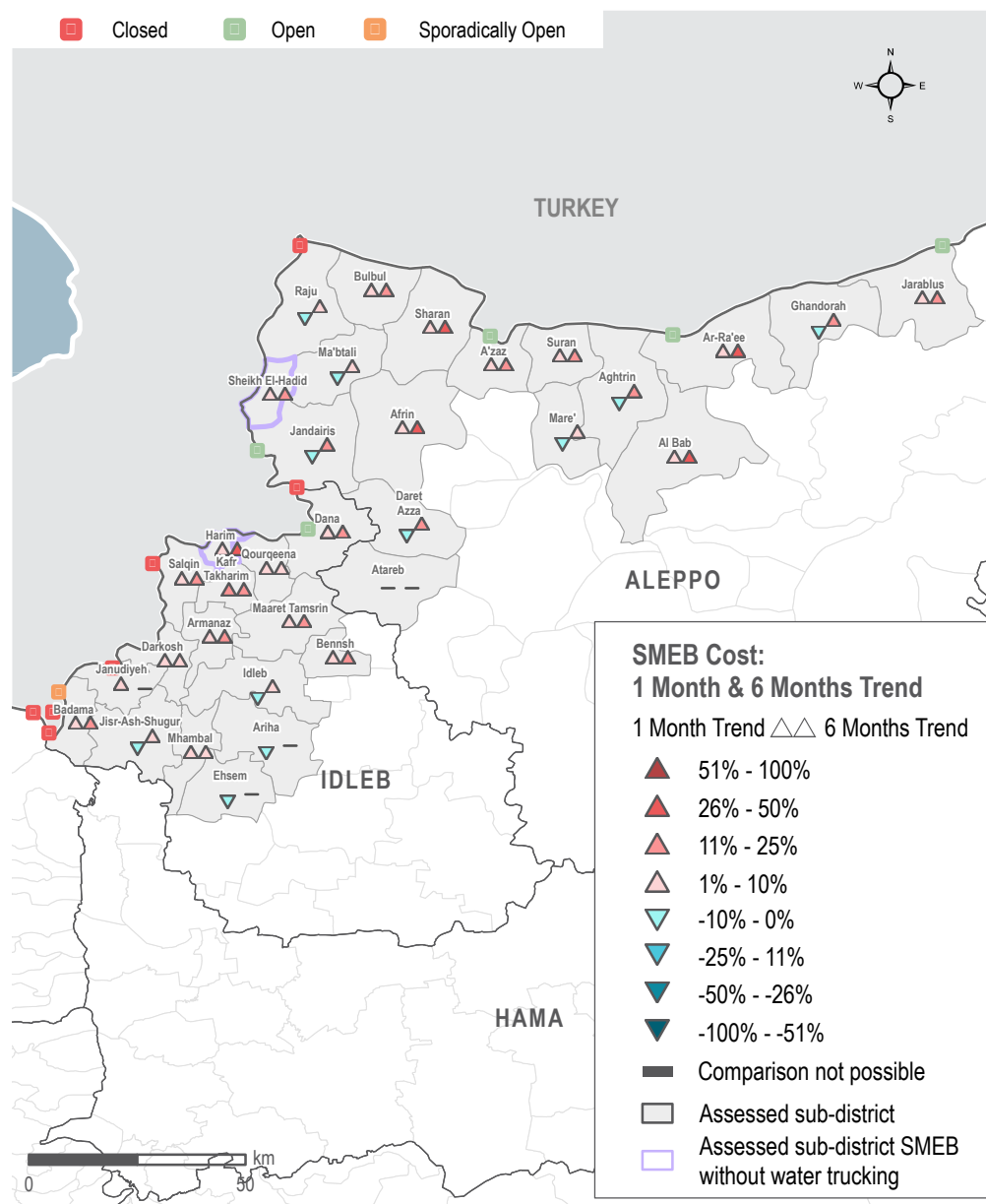
Note: For price and change calculations, only the communities within a sub-district with consistent coverage across months are included. The above applies to all tables.

<sup>#2</sup> See page 10 for further fuel data

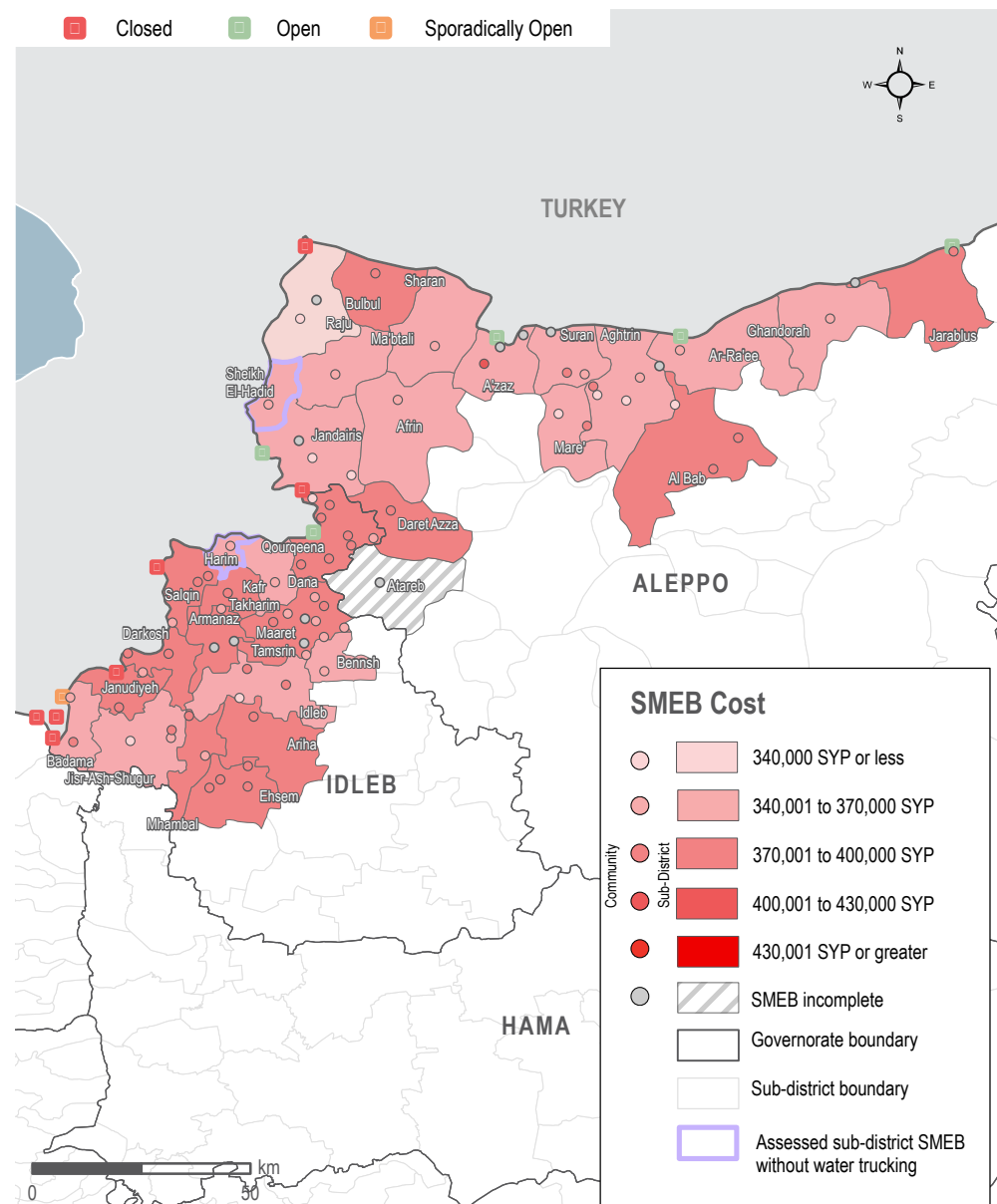
<sup>#3</sup> To compare SYP prices to USD or TRY, our [July 2021 dataset](#) provides informal exchange rates at the regional, district, subdistrict and community levels where data is available

# NORTHWEST SYRIA - KEY DEVELOPMENTS AND OVERVIEW

## SMEB Cost: 1 month and 6 months trend



## SMEB cost ranges (SYP) by sub-districts and communities



# NORTHWEST SYRIA - SMEB FOOD ITEMS

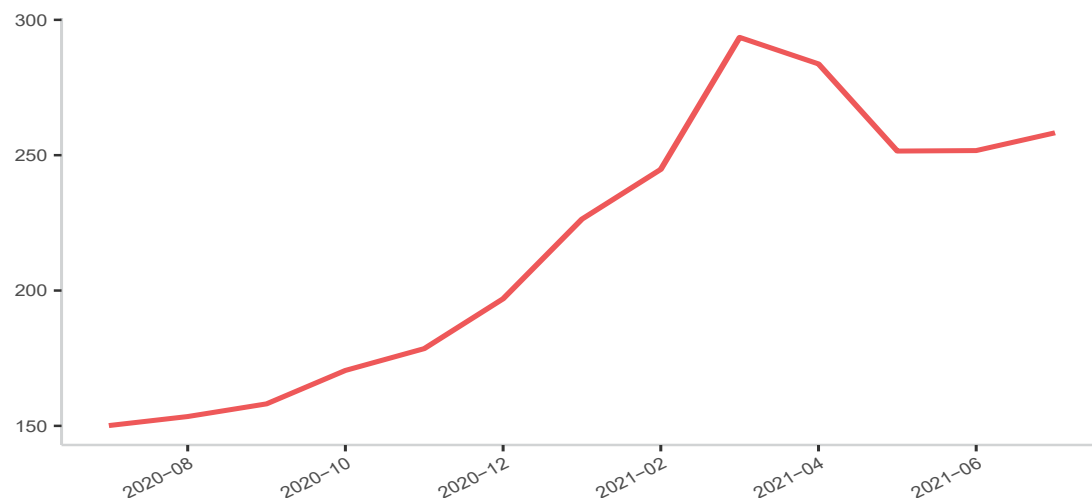
## MEDIAN SMEB COST: FOOD ITEMS

Syrian Pounds

Sub-district	SMEB Food	One month change	Six month change	Sub-district	SMEB Food	One month change	Six month change
<b>Northwest Syria</b>	<b>258,275</b>	<b>3%</b>	<b>14%</b>	<b>Harim</b>	<b>259,775</b>	<b>1%</b>	<b>32%</b>
<b>Afrin</b>	<b>262,975</b>	<b>3%</b>	<b>36%</b>	<b>Idleb</b>	<b>256,430</b>	<b>5%</b>	<b>12%</b>
<b>Agthrin</b>	<b>241,365</b>	<b>0%</b>	<b>23%</b>	<b>Jandairis</b>	<b>239,225</b>	<b>-1%</b>	<b>13%</b>
<b>Al Bab</b>	<b>261,958</b>	<b>6%</b>	<b>30%</b>	<b>Janudiyeh</b>	<b>262,800</b>	<b>4%</b>	<b>13%</b>
<b>Ariha</b>	<b>280,165</b>	<b>-2%</b>	<b>NA</b>	<b>Jarablus</b>	<b>255,575</b>	<b>0%</b>	<b>22%</b>
<b>Armanaz</b>	<b>264,478</b>	<b>0%</b>	<b>9%</b>	<b>Jisr-Ash-Shugur</b>	<b>248,757</b>	<b>-1%</b>	<b>7%</b>
<b>Ar-Ra'ee</b>	<b>258,395</b>	<b>4%</b>	<b>27%</b>	<b>Kafr Takharim</b>	<b>266,498</b>	<b>8%</b>	<b>19%</b>
<b>Atareb**</b>	<b>255,015</b>	<b>-9%</b>	<b>0%</b>	<b>Maaret Tamsrin</b>	<b>265,053</b>	<b>4%</b>	<b>14%</b>
<b>A'zaz</b>	<b>254,818</b>	<b>1%</b>	<b>18%</b>	<b>Ma'btali</b>	<b>227,335</b>	<b>-3%</b>	<b>-2%</b>
<b>Badama</b>	<b>253,450</b>	<b>1%</b>	<b>20%</b>	<b>Mare'</b>	<b>240,750</b>	<b>-2%</b>	<b>7%</b>
<b>Bennsh*</b>	<b>257,206</b>	<b>7%</b>	<b>14%</b>	<b>Mhambal</b>	<b>266,801</b>	<b>1%</b>	<b>7%</b>
<b>Bulbul</b>	<b>258,933</b>	<b>3%</b>	<b>12%</b>	<b>Qourqeena</b>	<b>251,825</b>	<b>3%</b>	<b>11%</b>
<b>Dana</b>	<b>256,034</b>	<b>0%</b>	<b>6%</b>	<b>Raju</b>	<b>237,520</b>	<b>-9%</b>	<b>4%</b>
<b>Daret Azza</b>	<b>267,590</b>	<b>-3%</b>	<b>15%</b>	<b>Salqin</b>	<b>271,853</b>	<b>1%</b>	<b>14%</b>
<b>Darkosh</b>	<b>269,340</b>	<b>8%</b>	<b>1%</b>	<b>Sharan*</b>	<b>258,275</b>	<b>3%</b>	<b>31%</b>
<b>Ehsem</b>	<b>260,588</b>	<b>2%</b>	<b>NA</b>	<b>Sheikh El-Hadid</b>	<b>264,600</b>	<b>5%</b>	<b>21%</b>
<b>Ghandorah</b>	<b>244,300</b>	<b>-1%</b>	<b>17%</b>	<b>Suran</b>	<b>255,219</b>	<b>4%</b>	<b>24%</b>

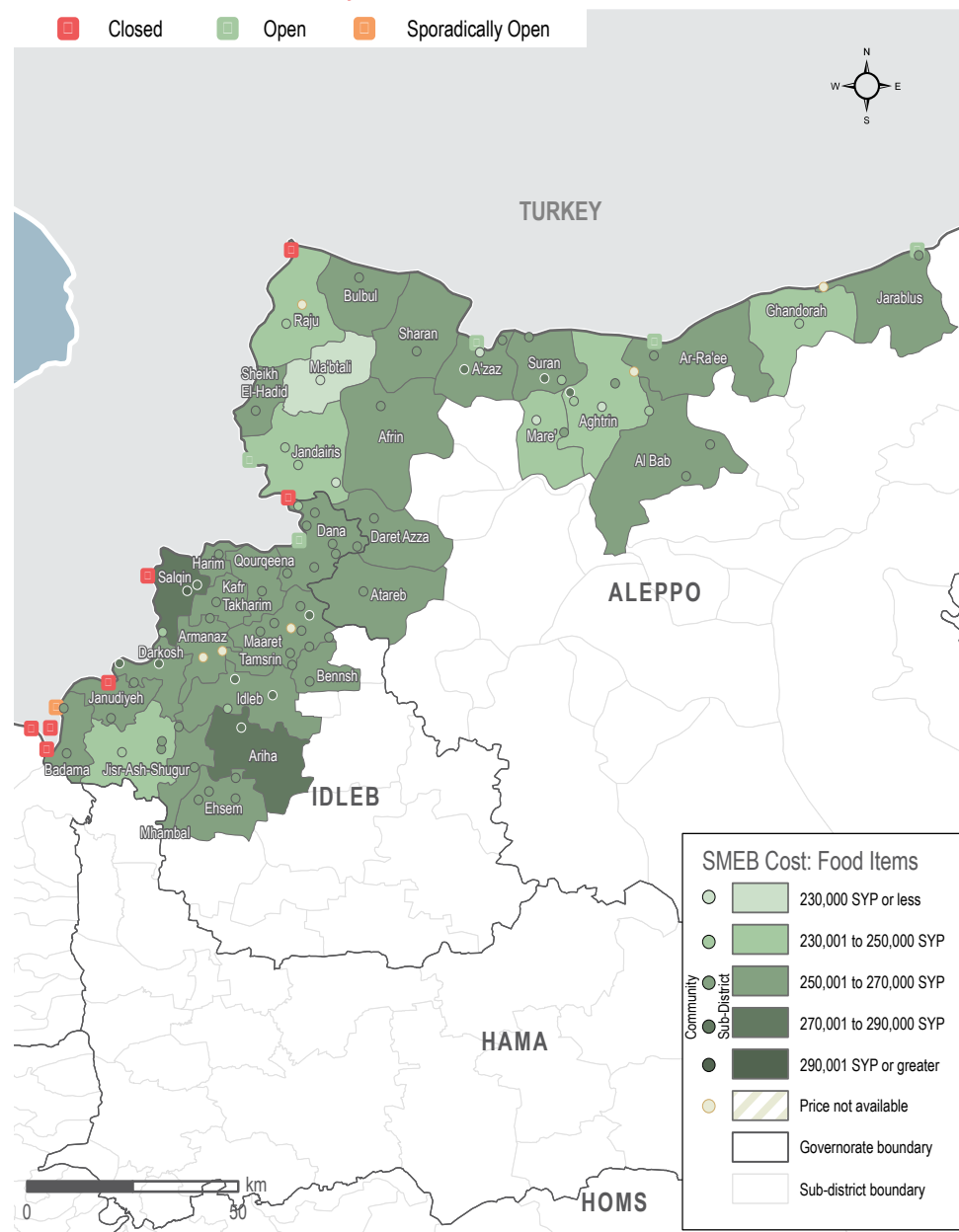
## MEDIAN SMEB COST: FOOD ITEMS, BY MONTH

Thousand Syrian Pounds



## SMEB FOOD ITEMS' COST

Sub-districts & Communities, Syrian Pounds





## **SMEB FOOD COMPONENT** 258,275 SYP (81 USD)<sup>#4</sup>

One month price change: **increase of 3%**  
Six month price change: **increase of 14%**

Highest % of surveyed vendors reporting a SMEB food item as unavailable in their community/neighbourhood: 3% for chicken

Highest % of surveyed vendors reporting SMEB food item as unavailable in their community/neighbourhood for previous month: 2% for chicken

There was a decrease in the cost of flour and fresh vegetables due to the agricultural harvesting season. Chicken, bread and bulk foods generally remained stable whereas eggs, bulgur, red lentils and baby formula increased notably in price. Overall, food prices in NWS increased by 3%, despite inflation remaining stable relative to June with an increase of only 0.2%.

## **SMEB BULK FOODS** 111,700 SYP (35 USD)

One month price change: **decrease of 0.3%**  
Six month price change: **increase of 12%**

- Bulgur: increased by **9%**
- Red lentils: increased by **5%**
- Salt: no change (**0%**)
- Rice: decreased by **3%**
- Tomato paste: decreased by **3%**
- Sugar: decreased by **4%**

Bulk food items saw some erratic price changes in July. According to REACH field teams, these items are typically imported. They are rarely produced locally, subjecting them to import fees and fluctuations of the SYP and TRY.

## **SMEB VEGETABLE COMPONENT** 7,976 SYP (2.52 USD)

One month price change: **decrease of 4%**  
Six month price change: **decrease of 32%**

- Tomatoes: decreased by **35%**
- Potatoes: decreased by **8%**
- Cucumbers: increased by **14%**
- Onions: increased by **18%**

REACH field teams attribute the price drops of tomatoes and potatoes to key vegetable items being in season and produced locally. However, cucumbers and onions rely more on imports from Government of Syria (GoS) areas, and their increased demand and lower supply contributed to price increases in July.

## **BREAD** 925 SYP PER 8 PIECE BUNDLE (0.29 USD)

One month price change: **increase of 1%**  
Six month price change: **increase of 23%**

% of surveyed vendors reporting bread as unavailable in their community/neighbourhood: 1%

Price fluctuations are attributed to both the depreciation of the SYP and general subsidies by the authorities. Prices for bread can vary between governorates:

- Aleppo: 800 SYP per bundle
- Idleb: 938 SYP per bundle

Wheat production has been hard hit by droughts across the middle east, "as rainfall received from the beginning of 2021 onwards did not compensate for the delayed onset and previously recorded deficits", [according to the World Food Programme](#).

## **FLOUR** 1,250 SYP PER KILO (0.39 USD)

One month price change: **decrease of 4%**  
Six month price change: **increase of 14%**

% of surveyed vendors reporting flour as unavailable in their community/neighbourhood: 1%

Flour is typically imported from Turkey and is thus affected by a fluctuating exchange rate.

## **CHICKEN** 5,650 SYP PER KILO (1.78 USD)

One month price change: **decrease of 0.3%**  
Six month price change: **increase of 13%**

% of surveyed vendors reporting chicken as unavailable in their community/neighbourhood: 3%

Prices for chicken stabilised in July, which REACH field teams attribute to the stabilisation of both the TRY and SYP. For a deeper analysis of animal feed and agribusiness in Northwest Syria, please see the [IMMAP Animal Feed/Fodder Market Actors Mapping for Northwest Syria](#), May 2021.

## **EGGS** 6,290 SYP FOR 30 EGGS (1.98 USD)

One month price change: **increase of 16%**  
Six month price change: **increase of 13%**  
% of surveyed vendors reporting eggs as unavailable in their community/neighbourhood: 0%

## **COOKING FUELS**

Kerosene and LP gas are the typical cooking and heating fuel in NWS, although Kerosene is much more widely available.

### Manually Refined Kerosene:

2,043 SYP per litre (0.64 USD)  
One month price change: **decrease of 7%**  
Six month price change: **increase of 10%**  
% of surveyed vendors reporting manually refined kerosene as unavailable in their community/neighbourhood: 73%

### LP Gas:

45,250 SYP per canister<sup>#5</sup> (14.27 USD)  
One month price change: **increase of 5%**  
Six month price change: **increase of 27%**  
% of surveyed vendors reporting LP gas as unavailable in their community/neighbourhood: 0%

<sup>#4</sup> July informal regional exchange rate for NWS: 3,170 SYP

<sup>#5</sup> Prices are taken for the cheapest available canister at the time of data collection, which is typically 20-25 litres.

# NORTHWEST SYRIA - SMEB WATER TRUCKING

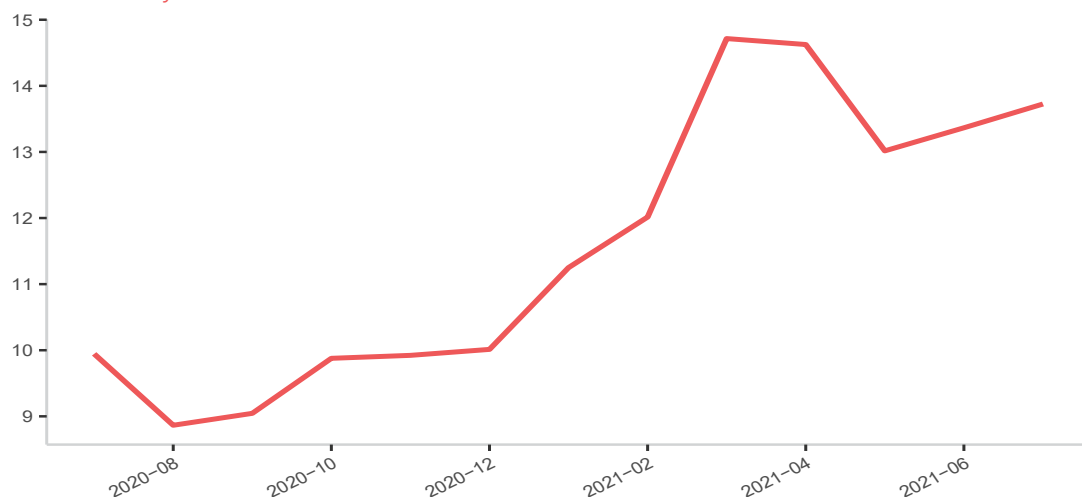
## MEDIAN SMEB WATER TRUCKING PRICE

4,500L, Syrian Pounds

Sub-district	SMEB Water Truck	One month change	Six month change	Sub-district	SMEB Water Truck	One month change	Six month change
Northwest Syria	13,725	3%	22%	Harim**	NA	NA	NA
Afrin	17,258	11%	53%	Idleb	20,745	3%	6%
Aghtarin	14,625	2%	41%	Jandairis	14,310	-3%	40%
Al Bab	30,173	62%	115%	Janudiyeh	11,250	7%	-21%
Ariha	16,650	0%	100%	Jarablus	20,700	13%	66%
Armanaz	12,780	1%	11%	Jisr-Ash-Shugur	13,500	-3%	36%
Ar-Ra'ee	11,700	7%	12%	Kafr Takharim	13,635	64%	21%
Atareb**	13,320	60%	28%	Maaret Tamsrin	13,095	10%	32%
A'zaz	14,932	17%	47%	Ma'b'tali	21,015	17%	40%
Badama	13,140	3%	40%	Mare'	13,095	-2%	7%
Bennsh	7,200	0%	-3%	Mhambal	15,660	-3%	8%
Bulbul	13,725	-2%	19%	Qourqeena	15,134	-11%	-24%
Dana	12,600	26%	22%	Raju**	12,668	8%	39%
Daret Azza	11,768	9%	9%	Salqin	13,815	3%	12%
Darkosh	13,905	11%	-13%	Sharan	11,880	4%	32%
Ehsem	13,185	-7%	NA	Sheikh El-Hadid**	NA	NA	NA
Ghandorah**	17,730	21%	58%	Suran	14,985	0%	16%

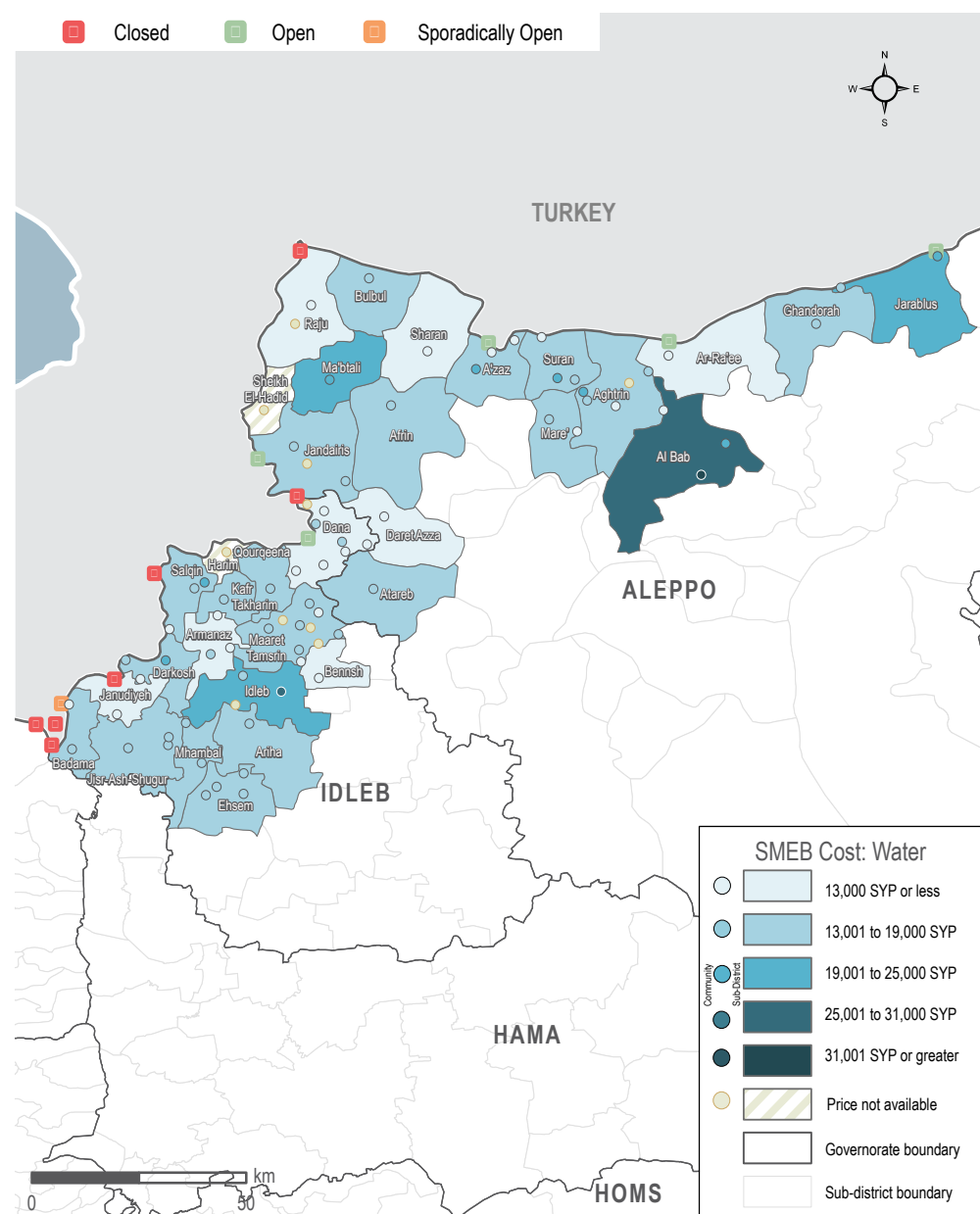
## MEDIAN SMEB WATER TRUCKING COSTS, BY MONTH

Thousand Syrian Pounds



## SMEB WATER TRUCKING COST

Sub-districts & Communities, Syrian Pounds



# NORTHWEST SYRIA - SMEB HYGIENE ITEMS W

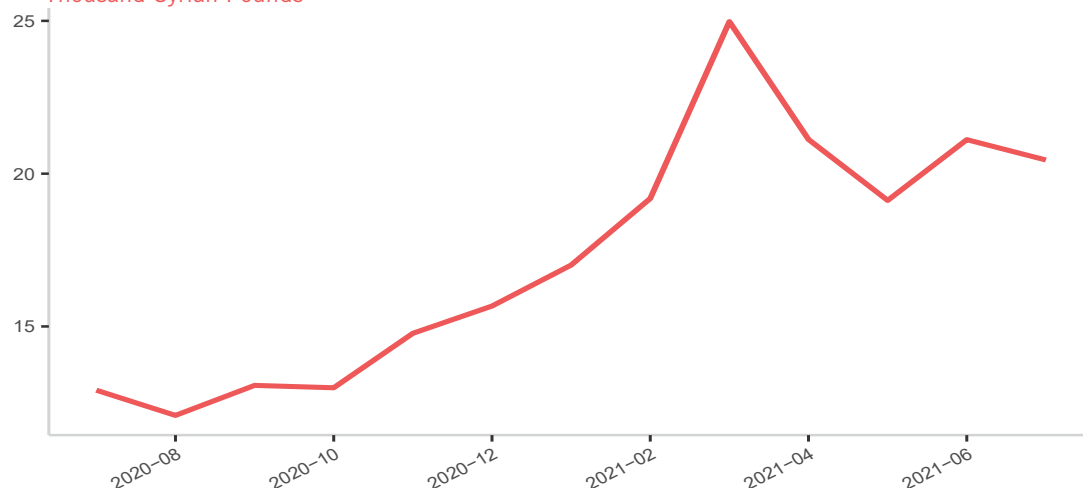
## MEDIAN SMEB HYGIENE ITEMS' PRICE

12 bars of soap, 4 packs of 10 sanitary pads, 200g of toothpaste, 3kg of laundry/dish soap, Syrian Pounds

Sub-district	SMEB Hygiene Items	One month change	Six month change	Sub-district	SMEB Hygiene Items	One month change	Six month change
Northwest Syria	20,447	-3%	20%	Harim	22,958	-1%	38%
Afrin	18,646	6%	54%	Idlib	17,116	8%	6%
Agthrin	16,621	8%	41%	Jandairis	17,600	7%	4%
Al Bab	20,519	3%	33%	Janudiyeh**	24,050	8%	NA
Ariha	22,738	-10%	2%	Jarablus	20,010	6%	32%
Armanaz	20,100	-9%	6%	Jisr-Ash-Shugur	22,238	4%	13%
Ar-Ra'ee	19,763	2%	18%	Kafr Takharim	19,619	1%	15%
Atareb**	NA	NA	NA	Maaret Tamsrin	23,770	6%	41%
A'zaz	21,290	13%	79%	Ma'btali	15,101	3%	14%
Badama	25,366	3%	31%	Mare'	18,150	5%	1%
Bennsh	15,745	5%	-13%	Mhambal	16,897	-4%	13%
Bulbul	25,450	10%	33%	Qourqeena	20,375	-1%	-2%
Dana	22,075	-1%	4%	Raju	18,363	1%	2%
Daret Azza	19,170	-17%	-14%	Salqin	22,600	7%	33%
Darkosh	22,603	-2%	9%	Sharan	25,671	11%	54%
Ehsem	25,826	11%	NA	Sheikh El-Hadid	26,024	8%	67%
Ghandorah	17,250	-1%	3%	Suran	21,762	-3%	34%

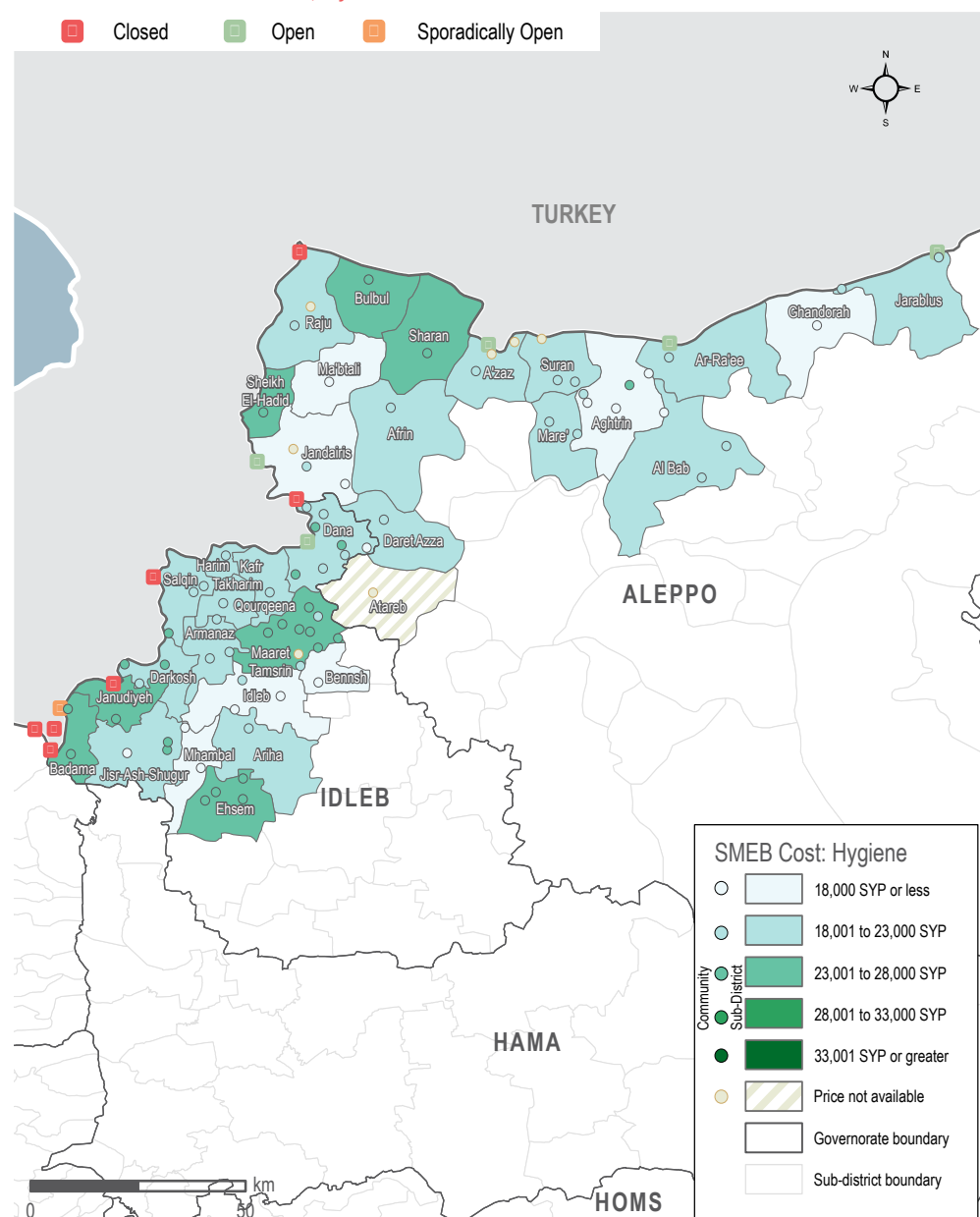
## MEDIAN SMEB HYGIENE ITEMS' COSTS, BY MONTH

Thousand Syrian Pounds



## SMEB HYGIENE ITEMS' COST

Sub-districts & Communities, Syrian Pounds



# NORTHWEST SYRIA - SMEB CELLPHONE DATA

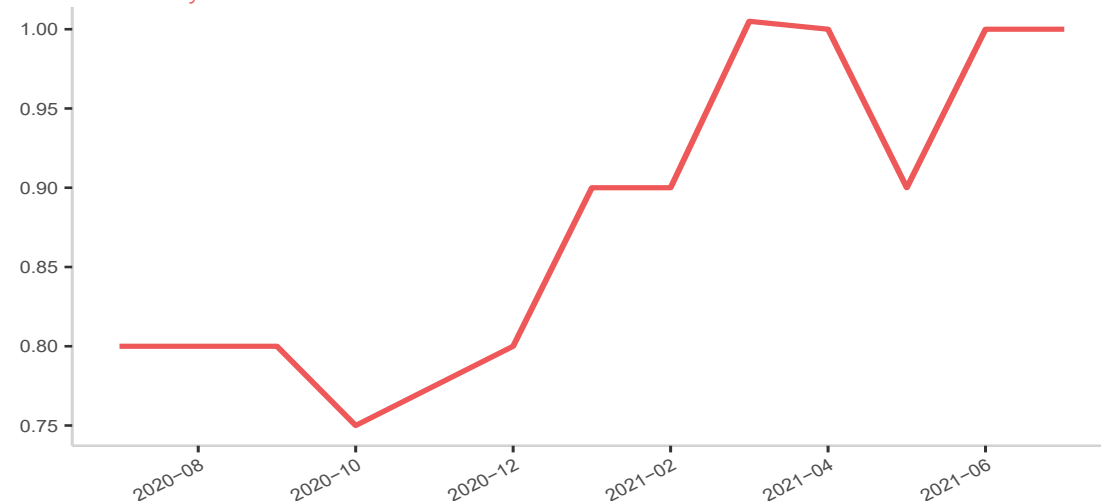
## MEDIAN SMEB CELLPHONE DATA PRICE

1GB data, Syrian Pounds

Sub-district	SMEB Data (1GB)	One month change	Six month change
<b>Northwest Syria</b>	<b>1,000</b>	<b>0%</b>	<b>11%</b>
Afrin	1,850	-8%	-3%
Agthrin	900	13%	-5%
Al Bab	875	3%	9%
Ariha	750	0%	25%
Armanaz	603	-19%	-25%
Ar-Ra'ee	750	0%	-6%
Atareb**	740	-33%	-36%
A'zaz	1,000	25%	-5%
Badama	1,000	0%	18%
Bennsh	725	1%	7%
Bulbul	1,000	5%	18%
Dana	820	-15%	-9%
Daret Azza	1,106	0%	1%
Darkosh	950	3%	19%
Ehsem	1,000	0%	NA
Ghandorah	1,000	0%	0%

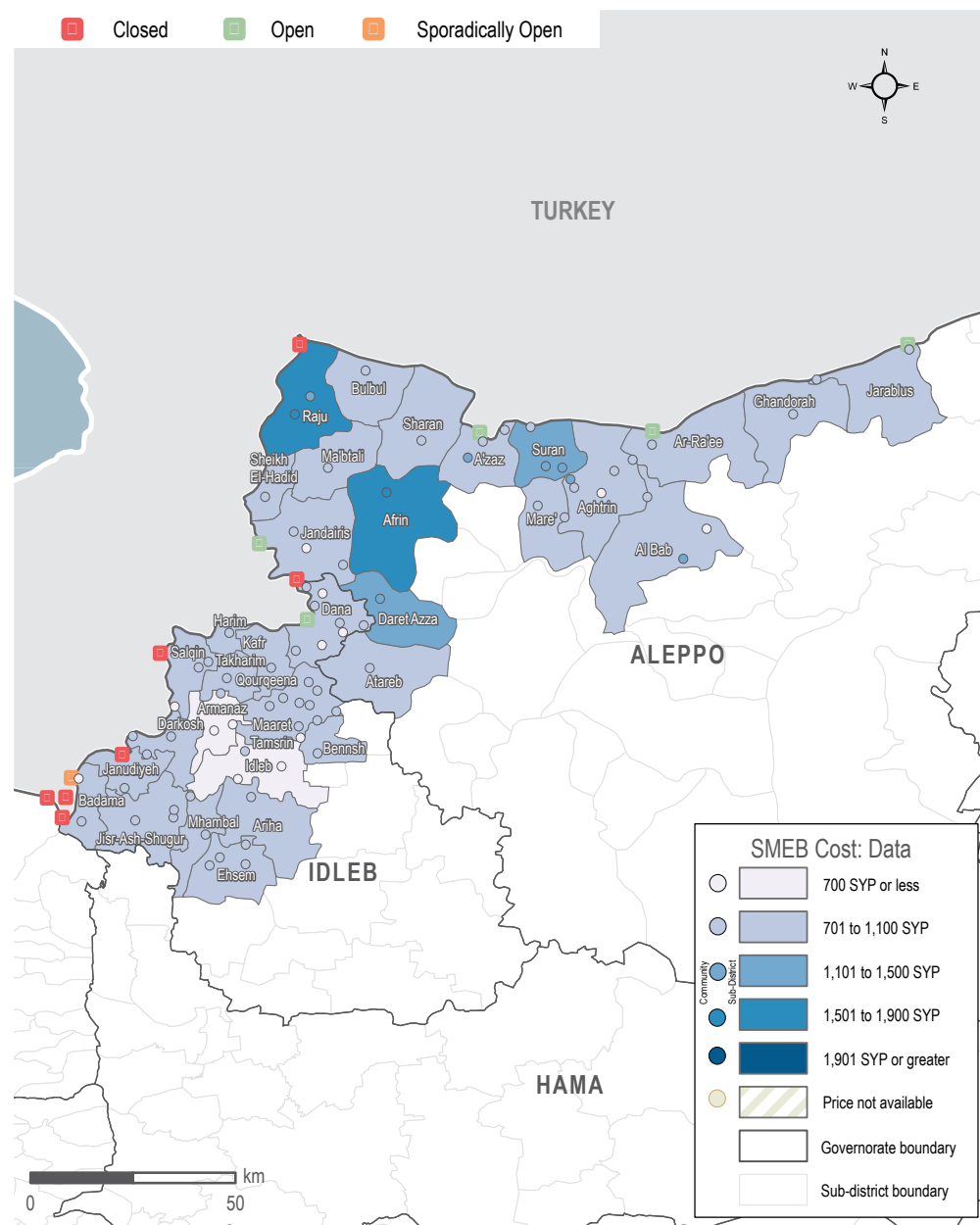
## MEDIAN SMEB CELLPHONE DATA COST, BY MONTH

Thousand Syrian Pounds



## SMEB CELLPHONE DATA COST

Sub-districts & Communities, Syrian Pounds





# NORTHWEST SYRIA - SMEB COOKING FUEL

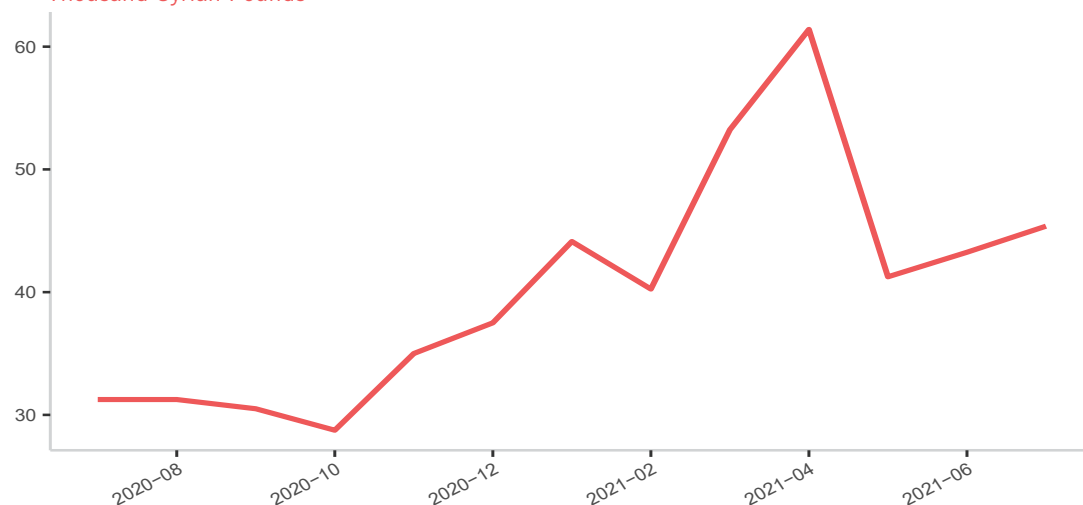
## MEDIAN SMEB COOKING FUEL PRICE

Kerosene 25L and LPG 20L, Syrian Pounds

Sub-district	SMEB Cooking Fuel	One month change	Six month change
<b>Northwest Syria</b>	<b>45,375</b>	<b>5%</b>	<b>2%</b>
Afrin**	38,750	0%	27%
Aghtarin	50,875	-6%	2%
Al Bab	50,875	-8%	15%
Ariha*	45,250	5%	19%
Armanaz	65,625	7%	25%
Ar-Ra'ee	47,500	28%	37%
Atareb**	62,050	3%	34%
A'zaz	45,000	6%	33%
Badama*	44,375	2%	-5%
Bennsh*	44,375	8%	33%
Bulbul*	45,375	5%	-4%
Dana	62,500	0%	34%
Daret Azza*	45,141	6%	22%
Darkosh*	45,938	7%	23%
Ehsem*	45,325	-24%	NA
Ghandorah**	45,000	-3%	20%

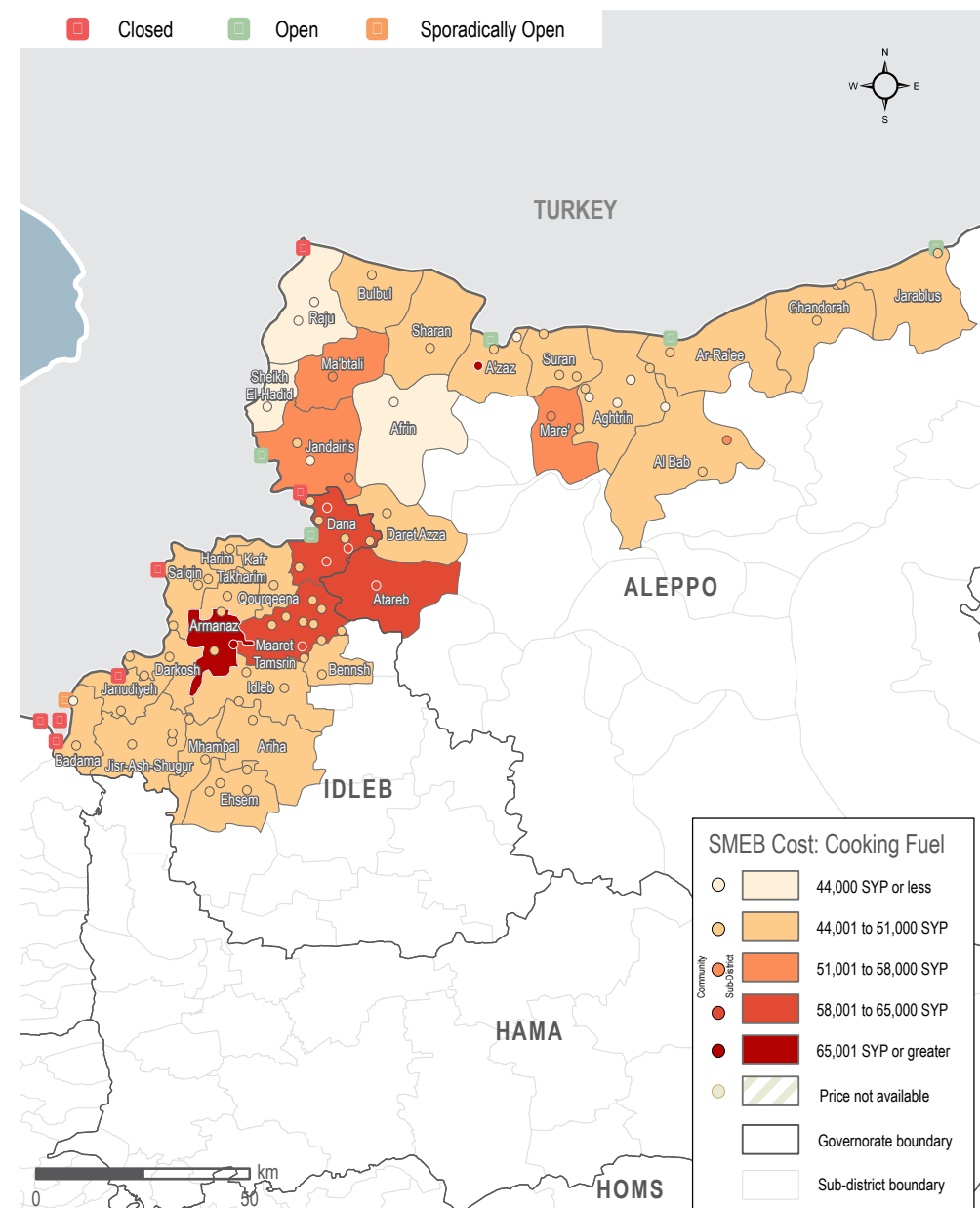
## MEDIAN SMEB COOKING FUEL COSTS, BY MONTH

Thousand Syrian Pounds



## SMEB COOKING FUEL COST

Sub-districts & Communities, Syrian Pounds



# NORTHWEST SYRIA - TRANSPORT FUEL

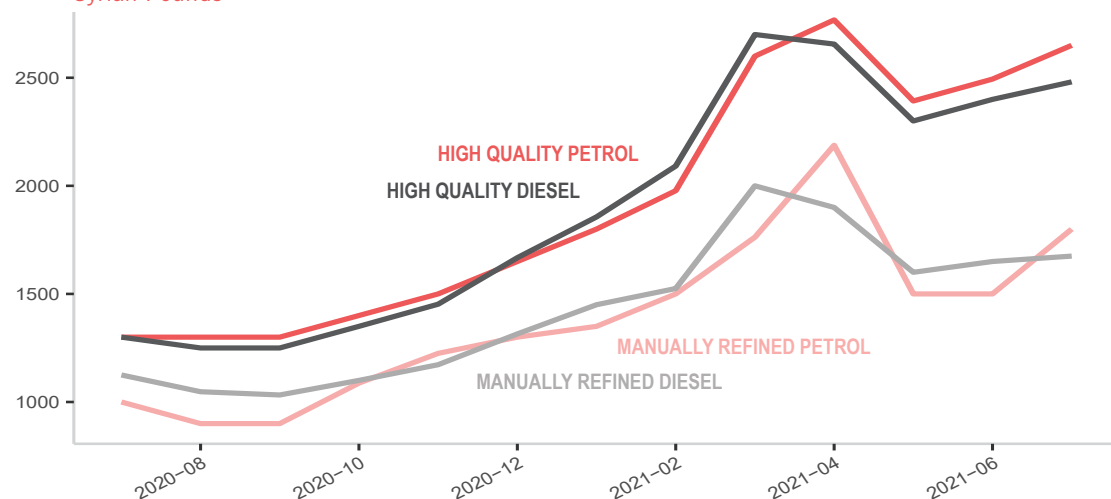
## MEDIAN TRANSPORT FUEL PRICE

Diesel and Petrol, 1L (High Quality and Manually Refined), Syrian Pounds

Sub-district	Transport Fuel	One month change	Six month change	Sub-district	Transport Fuel	One month change	Six month change
<b>Northwest Syria</b>	<b>2,267</b>	<b>5%</b>	<b>35%</b>	<b>Harim</b>	<b>2,470</b>	<b>12%</b>	<b>44%</b>
Afrin**	2,100	3%	33%	Idleb	2,267	5%	27%
Agthrin	2,026	10%	34%	Jandairis	2,333	15%	39%
Al Bab	2,065	11%	30%	Janudiyeh	2,463	12%	31%
Ariha*	2,565	4%	37%	Jarablus	2,188	9%	35%
Armanaz	2,328	3%	29%	Jisr-Ash-Shugur	2,325	6%	36%
Ar-Ra'ee	2,090	16%	27%	Kafr Takharim	2,259	4%	31%
Atareb**	2,434	15%	45%	Maaret Tamsrin	2,350	7%	37%
A'zaz	1,958	5%	28%	Ma'btali*	2,500	28%	56%
Badama	2,308	4%	37%	Mare'	2,081	12%	23%
Bennsh	2,567	13%	49%	Mhambal	2,317	1%	30%
Bulbul*	1,700	3%	17%	Qourqeena	2,322	7%	44%
Dana	2,375	8%	38%	Raju	2,218	18%	39%
Daret Azza	2,259	3%	34%	Salqin	2,425	10%	37%
Darkosh	2,298	4%	33%	Sharan	2,083	-5%	26%
Ehsem	2,257	13%	NA	Sheikh El-Hadid	2,050	0%	27%
Ghandorah	2,125	12%	38%	Suran	2,050	10%	32%

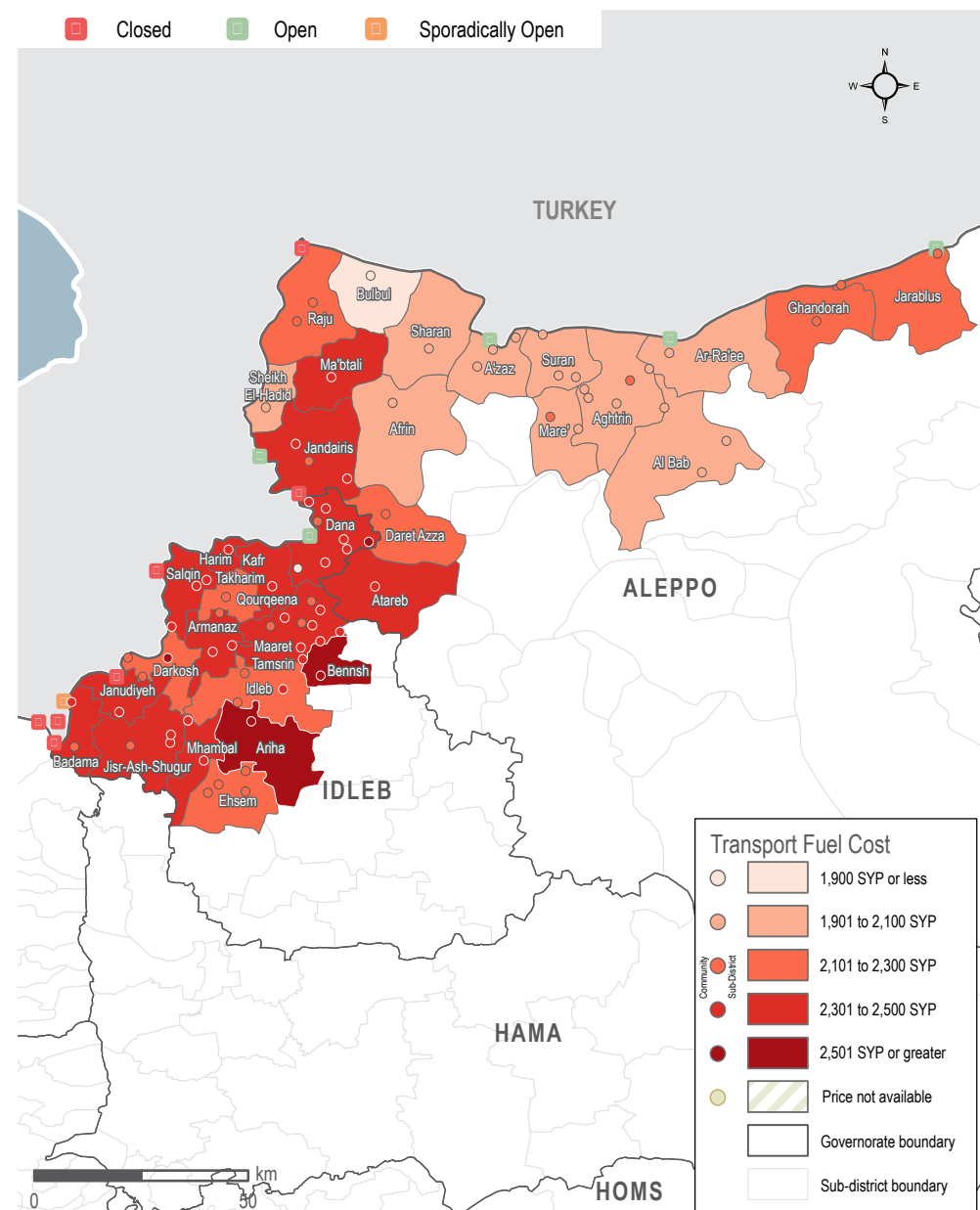
## MEDIAN TRANSPORT FUEL COSTS, BY MONTH & TYPE

Syrian Pounds



## TRANSPORT FUEL COST

Sub-districts & Communities, Syrian Pounds



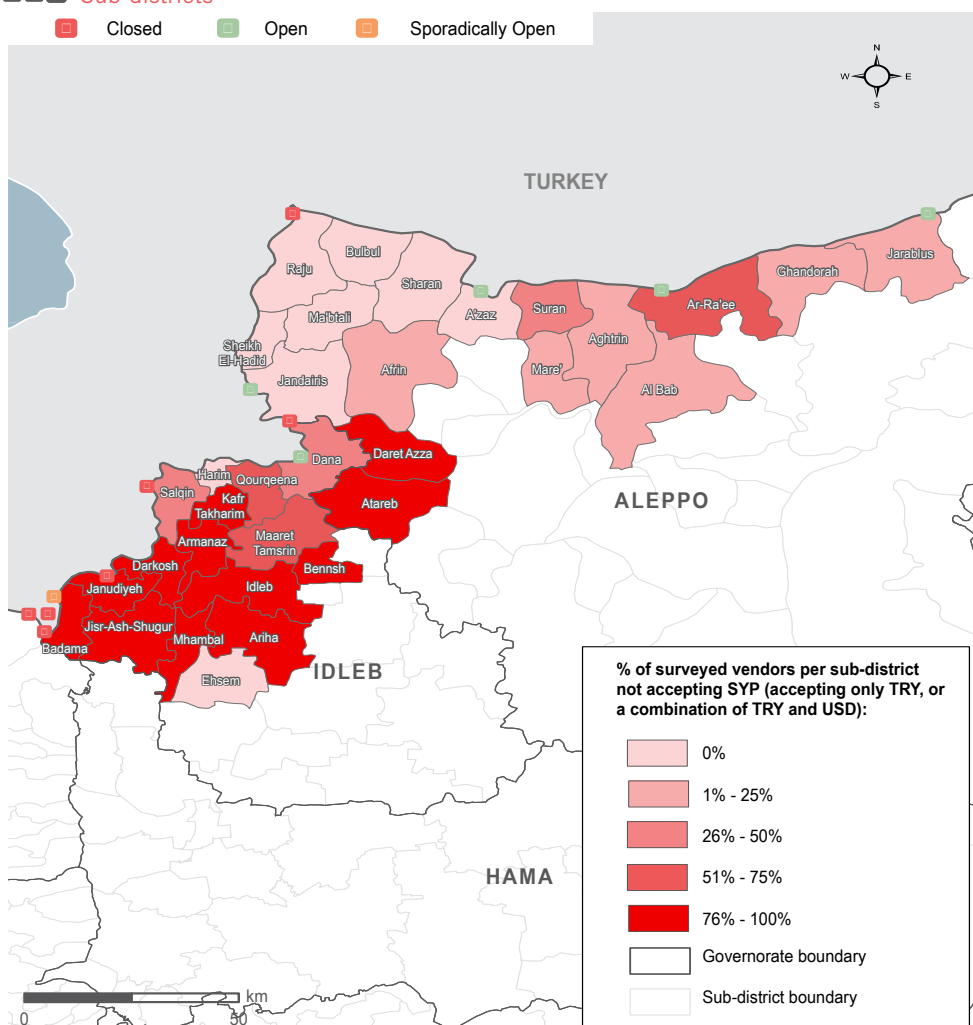
# NORTHWEST SYRIA - MARKET FUNCTIONALITY



## SURVEYED VENDORS NOT ACCEPTING SYRIAN POUNDS

Sub-districts

■ Closed
 ■ Open
 ■ Sporadically Open



## MARKET FUNCTIONALITY

For a wider overview of the Syrian market context please see the REACH [Quarterly Needs Overview](#), June 2021.

Total Surveyed Vendors: 2,178

Surveyed vendors reported shop closure: 12 shops = 0.6% of all surveyed shops.

11 of these shops were in Idleb and 1 in Aleppo.

One month change: **increase of 0.1 percentage points (pp)**



## SUPPLY CHALLENGES (SEE FIGURE 1)

Total surveyed vendors: 2,033

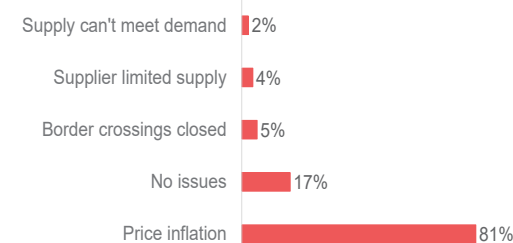
% of vendors who reported facing supply challenges: 83%

One month change for % of vendors who reported facing supply challenges: **increase of 3 pp**

Most reported supply challenge: Price inflation 81%

One month change for price inflation: **increase of 3 pp**

Figure 1: Most commonly reported supply challenges by all surveyed vendors (2,033 respondents)



## RESTOCKING (SEE FIGURE 2)

Number of surveyed vendors who were asked if they would be unable to restock if they were to run out of supplies: 2,171

Surveyed vendors reporting that they would be unable to restock if they were to run out of supplies: 6 shops = 0.3% of all surveyed shops

One month change for restocking: **increase of 0.1 pp**

Surveyed vendors were asked after how many days they would hypothetically run out of stock if supplies were to be cut: Less than 3 days: 44%

One month change for less than 3 days: **increase of 1 pp**

Across shop types, surveyed water trucking vendors (84%), vegetable vendors (71%) and butchers (63%) most commonly reported that they would run out in less than 3 days if unable to restock.

Notably, 87% of water trucking vendors in Aleppo and 81% of water trucking vendors in Idleb reported that they would run out of supply in less than 3 days if supply lines were cut, which is an increasing trend.

Figure 2: Reported number of days before all types of vendors would hypothetically run out of stock, if supply lines were to be cut (2,171 respondents)



## AVAILABILITY OF USD BANKNOTES

Informal currency exchange vendors were asked about their stock levels for USD banknotes of different denominations.

Surveyed currency vendors: 223

Surveyed vendors reporting having limited stock of one or more USD denomination: 96%

One month change for limited stock of one or more denomination: **increase of 1 pp**

The majority of surveyed vendors reported having a limited stock of all denominations of USD banknotes less than 100 USD. See [July 2021 dataset](#) for further currency data.



## CURRENCIES ACCEPTED

Aleppo: vendors most commonly reported selling items in both SYP and TRY (68%), and least commonly in TRY and USD (0%). SYP was not accepted in 19% of shops.

Idleb: vendors in Idleb most commonly reported selling items in TRY only (58%), and least commonly in all currencies – TRY, SYP and USD only (4%) (see map left, and below chart). SYP was not accepted in 46% of shops.

Currencies Accepted	SYP only	TRY only	TRY & USD	TRY, SYP & USD	SYP not accepted
Northwest Syria	6%	42%	41%	4%	6%
Aleppo governorate	3%	19%	68%	0%	19%
Idleb governorate	8%	58%	22%	7%	4%

# NORTHWEST SYRIA - COVID-19



## MEDIAN PRICE OF COVID-19 ITEMS

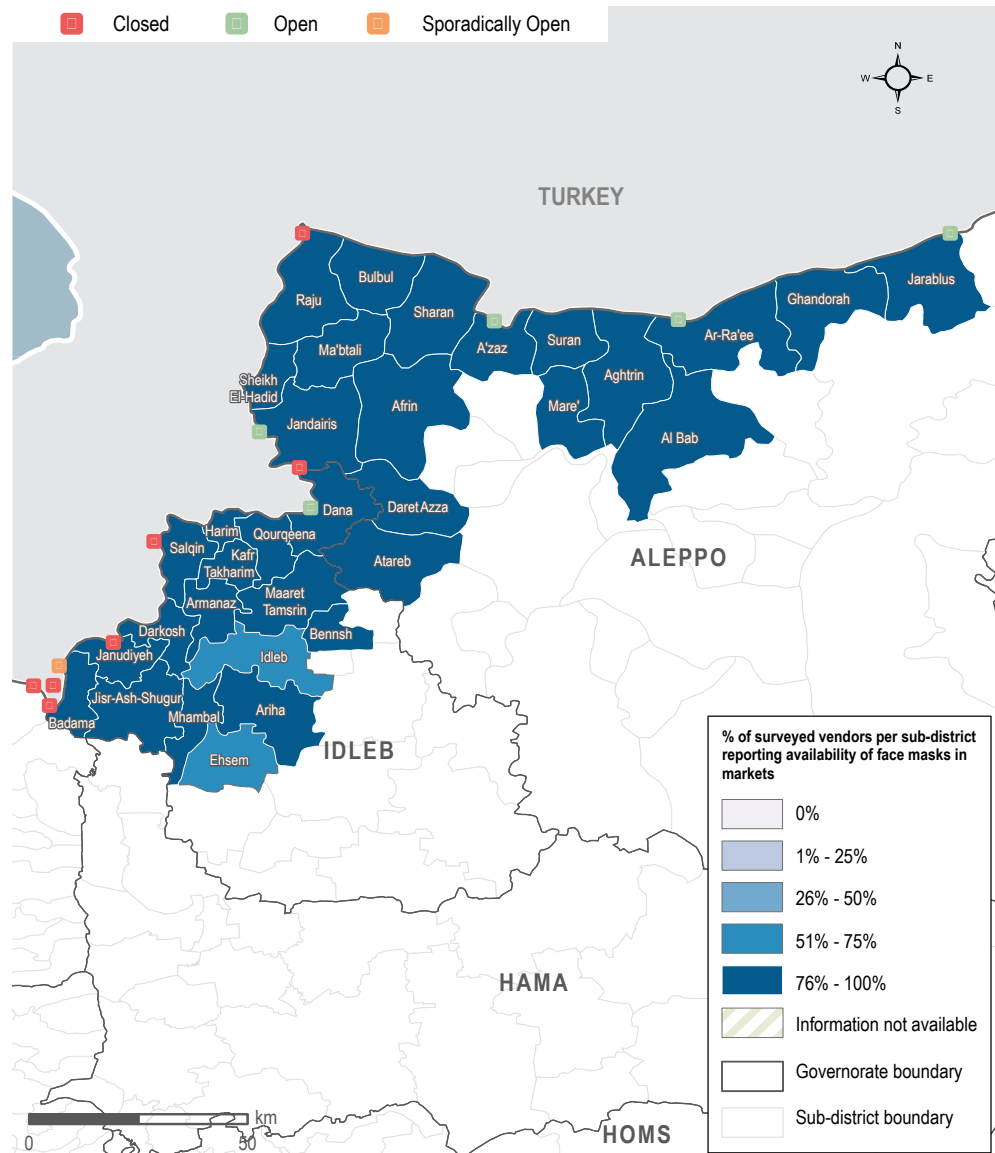
Syrian Pounds

Sub-district	Face mask (1 piece)	Plastic gloves (box of 100)	Sterile alcohol (1 litre)	Hand sanitiser (500 ml)	Bottled bleach (1 litre)	Trash bags (roll of 30)
<b>Northwest Syria</b>	<b>360</b>	<b>21,400</b>	<b>8,525</b>	<b>3,550</b>	<b>1,600</b>	<b>3,150</b>
Afrin	400	18,000	10,000	6,000	2,500	4,300
Aghtrin	360	23,725	8,592	2,950	1,625	2,800
Al Bab	365	23,725	8,500	2,375	1,890	2,980
Ariha	370	23,500	NA	NA	1,825	NA
Armanaz	370	24,500	9,525	3,600	1,700	3,400
Ar-Ra'ee	400	20,500	9,500	3,175	1,525	2,600
Atareb	185	17,000	11,100	5,520	1,850	4,400
A'zaz	400	24,000	8,800	4,700	1,850	2,960
Badama	400	21,000	5,500	4,500	1,600	3,100
Bennsh	362	28,000	9,500	1,850	1,200	4,500
Bulbul	200	21,400	6,350	3,200	1,575	3,050
Dana	356	21,400	8,550	3,300	1,669	3,150
Daret Azza	370	23,400	7,425	3,750	1,600	3,000
Darkosh	375	20,550	18,950	6,600	1,550	3,400
Ehsem	200	21,400	6,350	3,200	1,600	3,100
Ghadorah	300	25,000	6,600	3,200	1,700	1,980
Harim	200	21,300	6,400	3,200	1,400	3,400
Idleb	400	20,200	8,800	4,000	1,440	3,000
Jandairis	350	22,000	6,500	3,750	1,300	3,400
Janudiyeh	225	21,500	6,500	3,000	1,500	3,200
Jarablus	350	17,850	8,200	4,250	1,625	2,340
Jisr-Ash-Shugur	280	19,080	5,500	4,100	1,500	3,200
Kafr Takharim	400	18,500	9,000	3,750	1,500	3,000
Maaret Tamsrin	225	21,400	6,450	3,500	1,600	3,200
Ma'tali	450	25,500	9,500	3,750	1,100	3,500
Mare'	350	28,000	7,300	3,600	1,500	3,200
Mhambal	400	36,300	20,000	4,300	1,500	2,900
Qourqeena	250	20,400	6,500	3,450	1,650	3,025
Raju	375	21,250	9,750	3,450	1,100	NA
Salqin	400	20,000	9,700	4,000	1,682	3,250
Sharan	350	21,200	6,300	3,100	1,300	3,200
Sheikh El-Hadid	238	21,500	6,450	3,250	1,625	3,800
Suran	350	23,725	8,592	3,200	1,790	2,960



## AVAILABILITY OF FACE MASKS

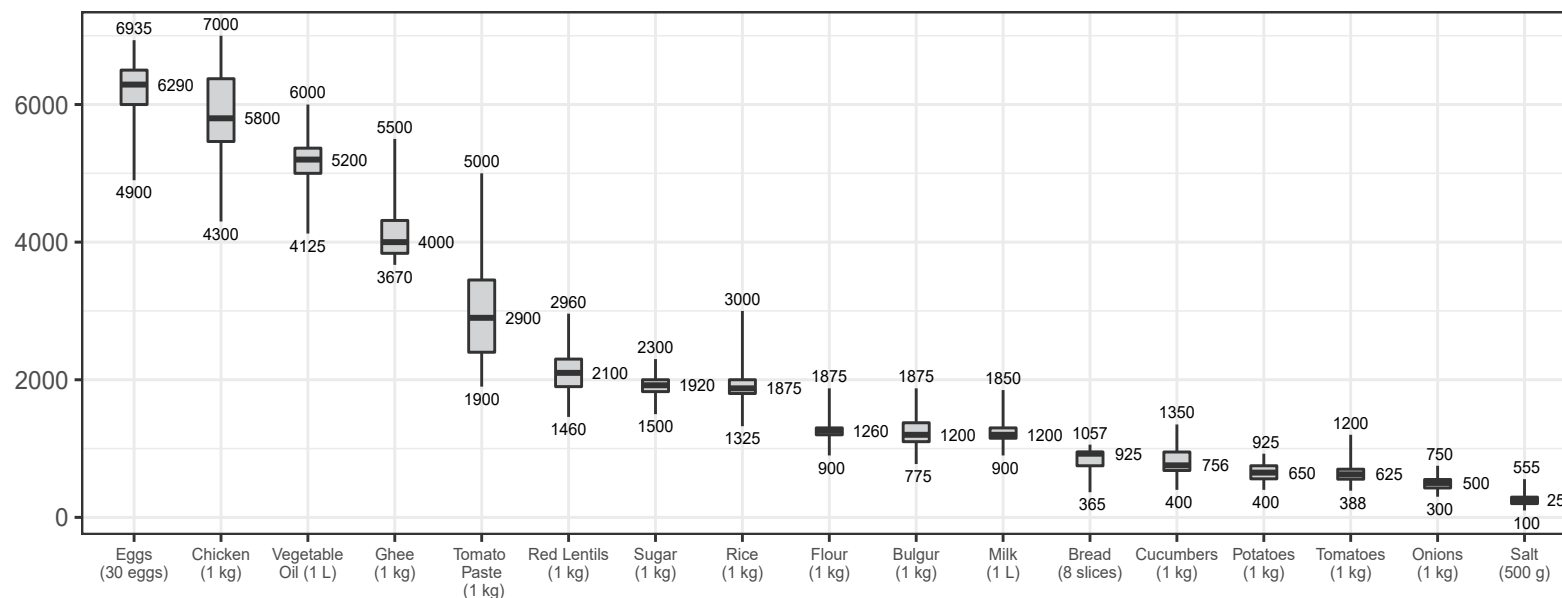
Sub-districts



# NORTHWEST SYRIA - DISTRIBUTION OF PRICES

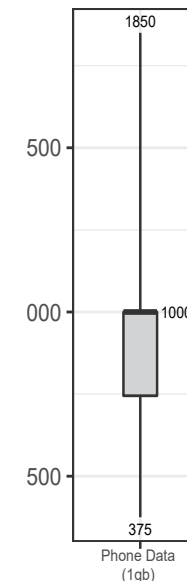
## ASSESSED FOOD ITEMS

Syrian Pounds



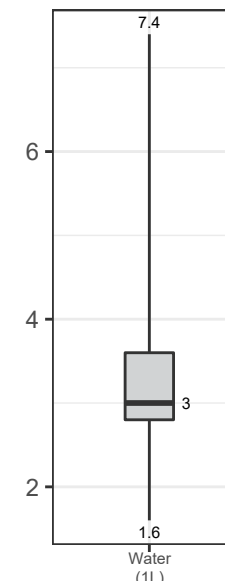
## CELLPHONE DATA

Syrian Pounds



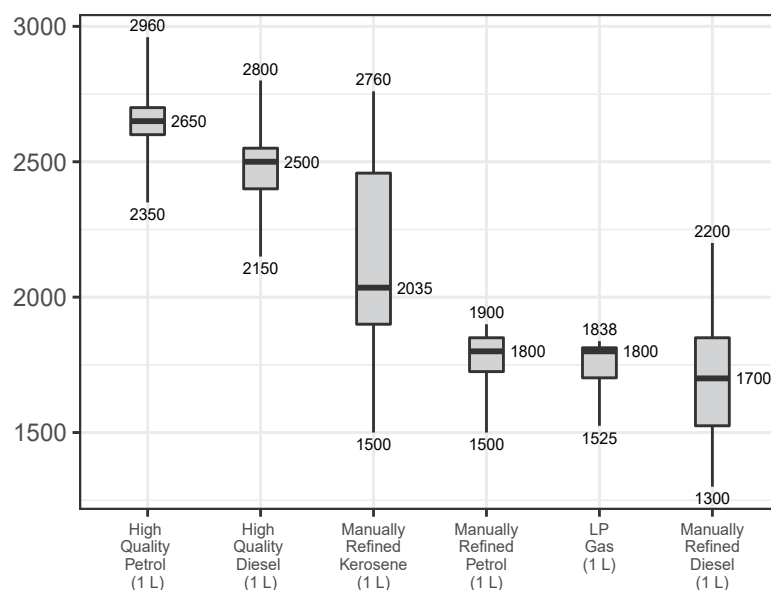
## WATER TRUCKING

Syrian Pounds



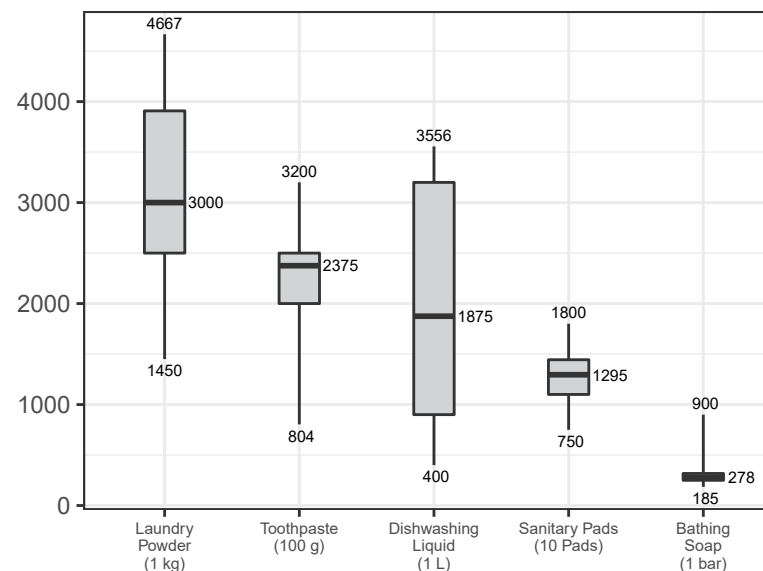
## ASSESSED FUEL ITEMS

Syrian Pounds

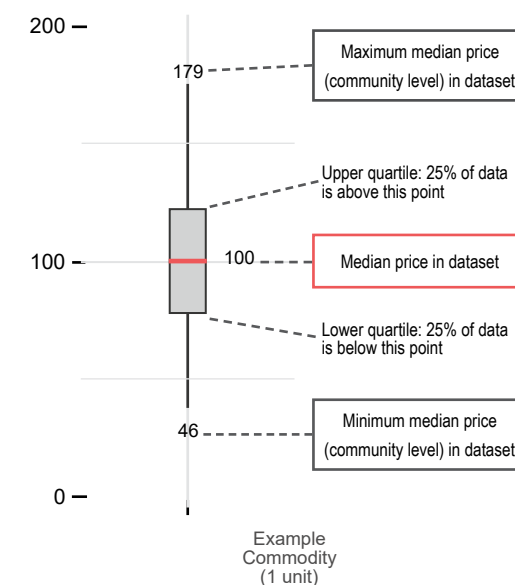


## ASSESSED HYGIENE ITEMS

Syrian Pounds



## READING BOXPLOTS





## METHODOLOGY

In order to be included in the Syria Market Monitoring Exercise, markets must be permanent in nature, large enough to support at least two wholesalers, and diverse enough to provide a sufficient variety of goods and commodities. Additionally, the shops surveyed within each market must be housed in permanent structures and must sell certain items to be eligible for inclusion. Participating organisations train their enumerators on the Market Monitoring methodology and data collection tools using standard training materials developed by REACH. Each enumerator aims to assess three to five shops of each type in the main market in their assigned community/neighbourhood, using surveys to collect information about the cheapest prices of each item and whether there are any barriers in the supply chain. In sub-districts where direct surveying by enumerators is not possible, data collection is conducted remotely through key informants such as shop owners, suppliers and consumers. A survey form is deployed on KoBo each month to capture price and stock information from different types of establishments, including grocery stores, fuel traders, currency exchange shops, water trucking services and mobile phone shops, among others. Nearly all participating partners submit their data to these KoBo forms, using the KoBoCollect Android app to upload data. A small number of partners, by prior permission, collect data using fully harmonised data collection tools deployed on other platforms, then submit their raw data to REACH for standardisation, compilation and cleaning.

Following data collection, REACH compiles and cleans all partners' data, normalising prices and cross-checking outliers. The cleaned data is then analysed by SMEB costs, components of the SMEB, and by commodities. These trends are observed at the sub-district-level and, when possible, at the community-level. Prices are divided into quartiles and boxplots are created to assist CWG members in understanding the

distribution of prices across the northeast and northwest of Syria. To illustrate local variations in prices and availability, REACH uses the collected data to map the price of the SMEB in each sub-district and adds illustrations of surrounding border crossings, with data sourced from the United Nations Office for the Coordination of Humanitarian Affairs (OCHA). In addition, each SMEB component costs and transport fuel prices are graphed to visualise trends over time.

The cleaned datasets are available on the [Humanitarian Data Exchange](#) website and the [REACH Resource Centre](#) and are distributed to all participating partners, as well as to interested clusters and the broader humanitarian community.

### Calculating 'median cheapest price'

The regional figures are calculated by taking the median of the minimum-reported prices of a region's sub-districts. In turn, the sub-district medians are calculated using the Market Monitoring base-data.

### Calculating Survival Minimum Expenditure Basket (SMEB) costs

The cost of a SMEB is calculated for each assessed sub-district by calculating the median cheapest price of each SMEB commodity in that sub-district, then multiplying these medians by the number of units that an average Syrian household requires to purchase in a month. The composition of the SMEB can be found on [page 2](#). SMEB vegetables include potatoes, tomatoes, onions, and cucumbers.

### Calculating price trends over time

One month and six-month price changes and trends in this factsheet are calculated only with the comparable assessed communities of a sub-district with consistent coverage across months. On the other hand, in the dataset, medians are calculated taking all assessed communities for the current month in consideration. Therefore, prices and percentage changes within the

tables of this factsheet may slightly differ from the current month's dataset medians. In the narrative, both regional median SMEB values are shared; the SMEB value including all assessed communities that specific month, and the SMEB value only taking in consideration communities with consistent coverage since the previous month.

### Changes to coverage

Given security and access constraints in the south of Syria, data collection has been unable to take place since July 2018. Escalation of conflict in October 2019 has resulted in limited coverage in northwest Syria in the months following the escalation.

### Challenges and limitations

As the Syria Market Monitoring Exercise currently includes 26 partners based in 2 hubs, achieving a consistent approach is inherently challenging. Participating organisations are therefore requested to adopt harmonised data collection methodologies and tools to ensure that the data uploaded is as accurate as possible. Since this exercise collects data directly from vendors and relies on partner organisations for its wide coverage, Market Monitoring may sporadically lose coverage temporarily or for longer periods of time due to challenges in accessing locations or loss in the shared data collection capacity of the project. This impacts the ability to report on trends, as can be seen in the line graphs and 'NA' values in the tables.

## ABOUT REACH

REACH Initiative facilitates the development of information tools and products that enhance the capacity of aid actors to make evidence-based decisions in emergency, recovery and development contexts. The methodologies used by REACH include primary data collection and in-depth analysis, and all activities are conducted through inter-agency aid coordination mechanisms. REACH is a joint initiative of IMPACT Initiatives, ACTED and the United Nations Institute for Training and Research - Operational Satellite Applications Programme (UNITAR-UNOSAT). For more information please visit our website:

[www.reach-initiative.org](http://www.reach-initiative.org). You can contact us directly at: [geneva@reach-initiative.org](mailto:geneva@reach-initiative.org) and follow us on Twitter [@REACH\\_info](https://twitter.com/REACH_info).

## ABOUT THE CASH WORKING GROUP

The Cash Working Group (CWG) was established in May 2014 to analyse the impact of the ongoing conflict on markets in Syria and guide the implementation of humanitarian cash and voucher programmes within those markets. REACH and the CWG have been partners on the Syria Market Monitoring Exercise since early 2015.

## About REACH's COVID-19 response

As an initiative deployed in many vulnerable and crisis-affected countries, REACH is deeply concerned by the devastating impact the COVID-19 pandemic may have on the millions of affected people we seek to serve. REACH works with Cash Working Groups and Partners to provide up-to-date evidence to inform the humanitarian responses in the countries where we operate. COVID-19-relevant market monitoring and market assessments is a key area where REACH aims to leverage its existing expertise to help humanitarian actors understand the impact of changing restrictions on markets and trade. Updates regarding REACH's response to COVID-19 can be found in a [devoted thread](#) on the REACH website. Contact [geneva@impact-initiatives.org](mailto:geneva@impact-initiatives.org) for further information.