

NORTHWEST SYRIA MARKET MONITORING EXERCISE

Snapshot: 7-14 December 2020

INTRODUCTION

To inform humanitarian cash programming, REACH, in partnership with the Cash Working Group (CWG), conducts monthly Market Monitoring Exercises in northern Syria to assess the availability and prices of 36 basic commodities that are typically sold in markets and consumed by average Syrian households, including food and non-food items, water, fuel, and cellphone data.

Of these, 18 items comprise the Survival Minimum Expenditure Basket (SMEB; see below), which represents the minimum, culturally adjusted items required to support a 6-person household for a month.

Data collection took place between 7-14 December 2020 and was conducted by REACH, GOAL, People In Need, Violet and Solidarités International.

The accompanying data is disseminated monthly and is distributed through partners across the humanitarian community. See REACH Resource Centre for the [December 2020 data](#).

SURVIVAL MINIMUM EXPENDITURE BASKET (SMEB) CONTENTS

	Item	Quantity
Food Items	Bread	37 kg
	Bulgur	15 kg
	Chicken	6 kg
	Eggs	6 kg
	Fresh vegetables	12 kg
	Ghee/vegetable oil	7 kg/L
	Red lentils	15 kg
	Rice	19 kg
	Salt	1 kg
	Sugar	5 kg
	Tomato paste	6 kg
Hygiene items	Bathing soap	12 bars
	Laundry/dish soap	3 kg
	Sanitary pads	4 packs of 10
	Toothpaste	200 g
Fuel	Cooking fuel*	25 L
Water	Water trucking	4500 L
Telecom	Smartphone data	1 GB
Other	Float (other costs)**	7.5% total value

* Kerosene in northern Syria

** Float only applied to observations where prices of all SMEB contents could be collected

KEY DEVELOPMENTS

Coverage and data collection dates

In December 2020, REACH and partners covered 29 sub-districts and 2,192 individual shops in northwest Syria (NWS) for the Market Monitoring Exercise. In light of the fluctuation of the Syrian Pound (SYP)'s value and resulting market disruption, prices in the Market Monitoring dataset and output should be seen as representative only of the markets and dates where and when information was collected (7-14 December).

Highest northwest SMEB SYP cost recorded; SMEB USD cost slightly decreased

In December, the value of the regional SMEB reached 282,716 SYP, an 11% increase from November and a 24% increase since June 2020, setting a new record for the highest ever recorded price in the Market Monitoring Exercise in NWS. The SMEB in United States Dollars (USD) decreased from 107 to 105 USD in December as the SYP lost value against the USD (see next paragraph).

Slight depreciation of the SYP against the USD

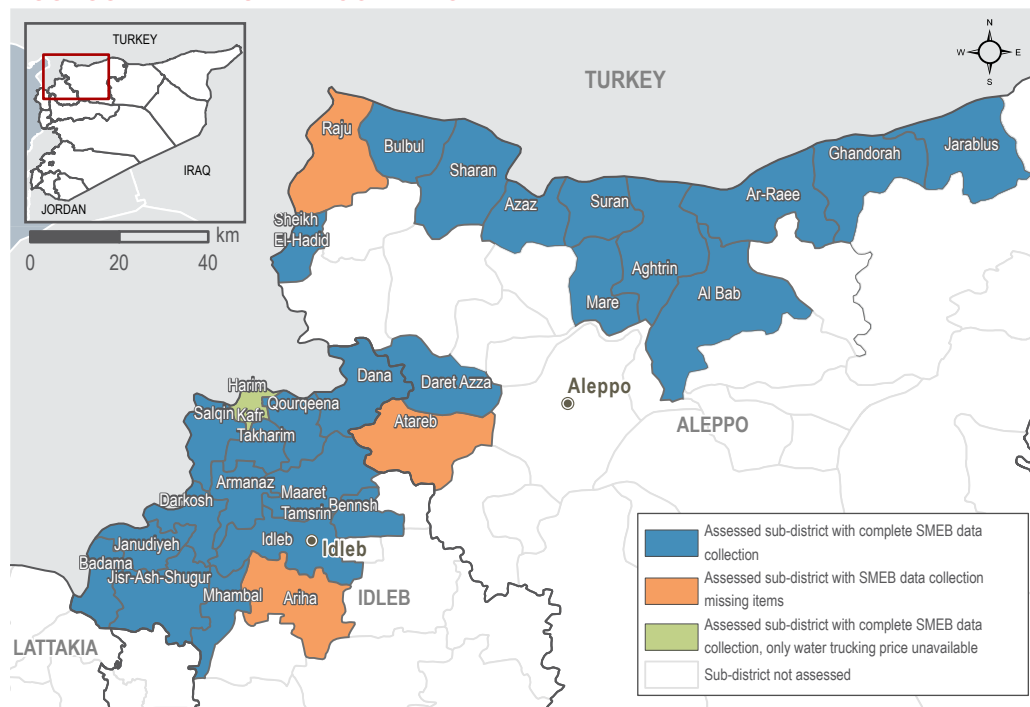
In December, the informal USD/SYP regional median exchange rate increased by 13% since November and reached a regional median of 2,694 USD/SYP. The six-month change, a 3% increase since the record drop in value of the SYP in June 2020, highlights that while the value of the SYP has slightly stabilized in the months since, it remains unstable against the USD. The highest exchange rate was recorded at 2,750 SYP to 1 USD in Azmarin community in Idlib governorate.

Fuel prices further increased; manually refined fuels remained widely unavailable

At the regional level, overall prices for transport fuels increased by 13% between November and December, with a median price of 1,549 SYP per litre. Less expensive, manually refined fuels, including diesel, petrol, and kerosene remained largely unavailable in NWS due to inaccessibility of raw material inputs and low levels of import for fuels refined

in northeast Syria (NES). For example, 79% of surveyed fuel vendors reported that manually refined petrol was not available in their market at the time of data collection, while 51% reported the same for both manually refined diesel and manually refined kerosene. With the significant unavailability of lower quality but less expensive fuels, prices for high quality diesel and petrol (largely European fuels imported via Turkey) continued increasing in December, driven both by increasing demand as well as by fluctuating exchange rates of both the SYP and the TRY against the USD. While [two new fuel companies](#), Kaf Trading Company and Shahba Petroleum Company, began selling alongside Watad Petroleum in the NWS market in November and December, their introduction does not appear to have affected fuel prices overall. REACH field teams reported that fuel prices for all companies largely remain set through directives from the Syrian Salvation Government (SSG).

ASSESSED AREAS AND COVERAGE

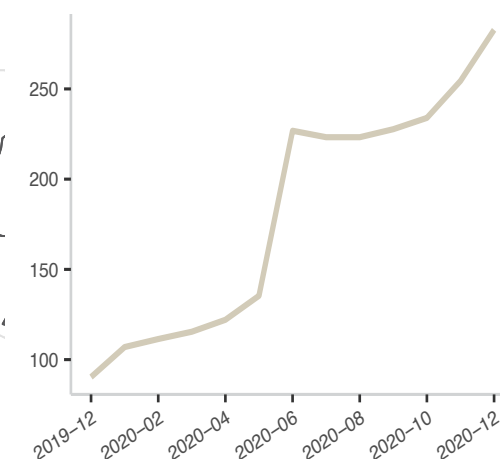


MEDIAN SMEB COST IN SYP (USD), BY REGION

282,716 SYP (105 USD) | NORTHWEST SYRIA - IDLEB, WESTERN & NORTHERN ALEPPO GOVERNORATES

MEDIAN SMEB COSTS, BY MONTH

Thousand Syrian Pounds



KEY DEVELOPMENTS

282,716 SYP
(105 USD)

NORTHWEST SYRIA - IDLEB, WESTERN & NORTHERN ALEPPO GOVERNORATES

Continued increase of food item prices

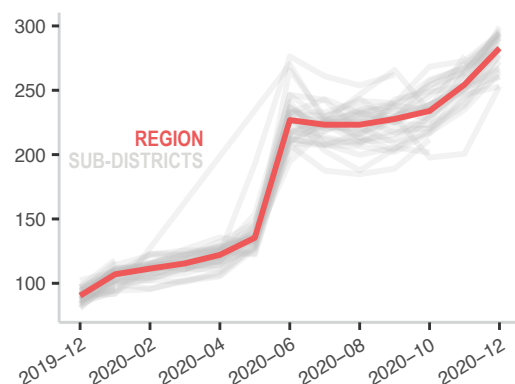
The cost of the regional SMEB food component reached 196,954 SYP in December, an 11% increase since November and a 25% increase since June 2020. Specifically, the fresh vegetable component of the SMEB increased by 21%, primarily as a result of decreased availability of locally-grown, warm-weather produce and increased reliance on more expensive, imported produce, as well as due to increasing transport fuel prices and the further depreciation of the SYP. Bulk food prices also increased by 12% overall since November, again due to the higher cost of imported items, rising fuel costs, and unstable exchange rates against the USD. The price of bread (bag of 8 pieces) also increased by 13% since November, reaching a regional median of 680 SYP in December. Increasing bread prices were primarily due to a similar rise in the price of flour (18% increase since November), a product which is in short local supply in the region and for which import prices are dependent on fluctuating exchange rates. Additionally, increased prices were recorded for other SMEB food items such as chicken, the price of which increased by 11% between November and December due to a combination of factors including SYP depreciation, increasing prices of imported feed for poultry, and limited availability of locally-raised chicken.

Rising cost of cooking oils and cooking fuels

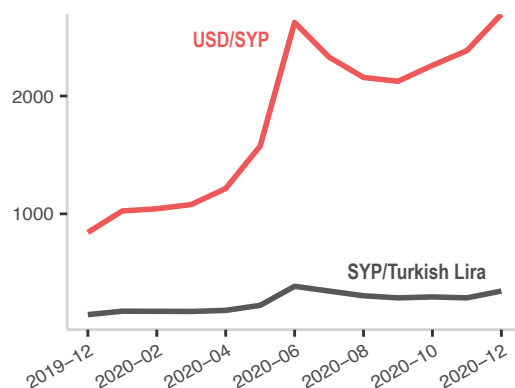
In addition to the rising cost of food items themselves, other items that are necessary for the preparation and cooking of food also increased in price. Median regional prices for vegetable oil and ghee, both commonly used for cooking, rose by 19% and 17% respectively, between November and December. The regional median price for cooking oil increased by 28% since June 2020, marking a significant upward trend over the past six months. Both commodities are largely imported into NWS and, therefore, their prices are subject to exchange rate fluctuations and transport fuel costs. The cost of fuels used for cooking also increased between November and December, with the regional median price of liquid petroleum gas (LPG) increasing by 16% and manually refined kerosene increasing by 13%. As reported above ([see fuel prices overview on page 1](#)), manually refined kerosene is often unavailable in many markets of NWS (reported as unavailable by 51% of surveyed fuel vendors in December), leading consumers in NWS to rely more heavily on the use of LPG for cooking purposes.

MEDIAN SMEB COSTS, BY MONTH

Thousand Syrian Pounds



EXCHANGE RATES, BY MONTH & CURRENCY



MEDIAN SMEB COSTS & CHANGES*

Syrian Pounds

Sub-district	SMEB	One month change	Six month change
Northwest Syria	282,716	11%	24%
Agthrin	260,619	7%	25%
Al Bab	264,106	12%	12%
Ariha	NA	NA	NA
Armanaz	296,887	13%	28%
Ar-Ra'ee	252,799	2%	10%
Atareb	NA	NA	NA
A'zaz	278,045	16%	13%
Badama	294,312	8%	26%
Bennsh	260,822	4%	-2%
Bulbul	282,825	6%	35%
Dana	293,239	8%	28%
Daret Azza	281,942	13%	27%
Darkosh	299,399	17%	37%
Ghandorah	272,472	15%	20%

Sub-district	SMEB	One month change	Six month change
Harim**	269,126	6%	37%
Idleb	276,520	11%	17%
Janudiyeh	290,411	8%	NA
Jarablus	281,718	12%	17%
Jisr-Ash-Shugur	295,845	12%	41%
Kafr Takharim	282,716	6%	15%
Maaret Tamsrin	287,275	7%	33%
Mare'	291,876	15%	45%
Mhambal	290,662	13%	24%
Qourqeena	293,870	11%	36%
Raju	NA	NA	NA
Salqin	294,593	16%	27%
Sharan	267,383	5%	26%
Sheikh El-Hadid	253,146	26%	19%
Suran	266,159	6%	22%

* For price and change calculations, only the communities within a sub-district with consistent coverage across months are included.

** SMEB calculated without water trucking component.

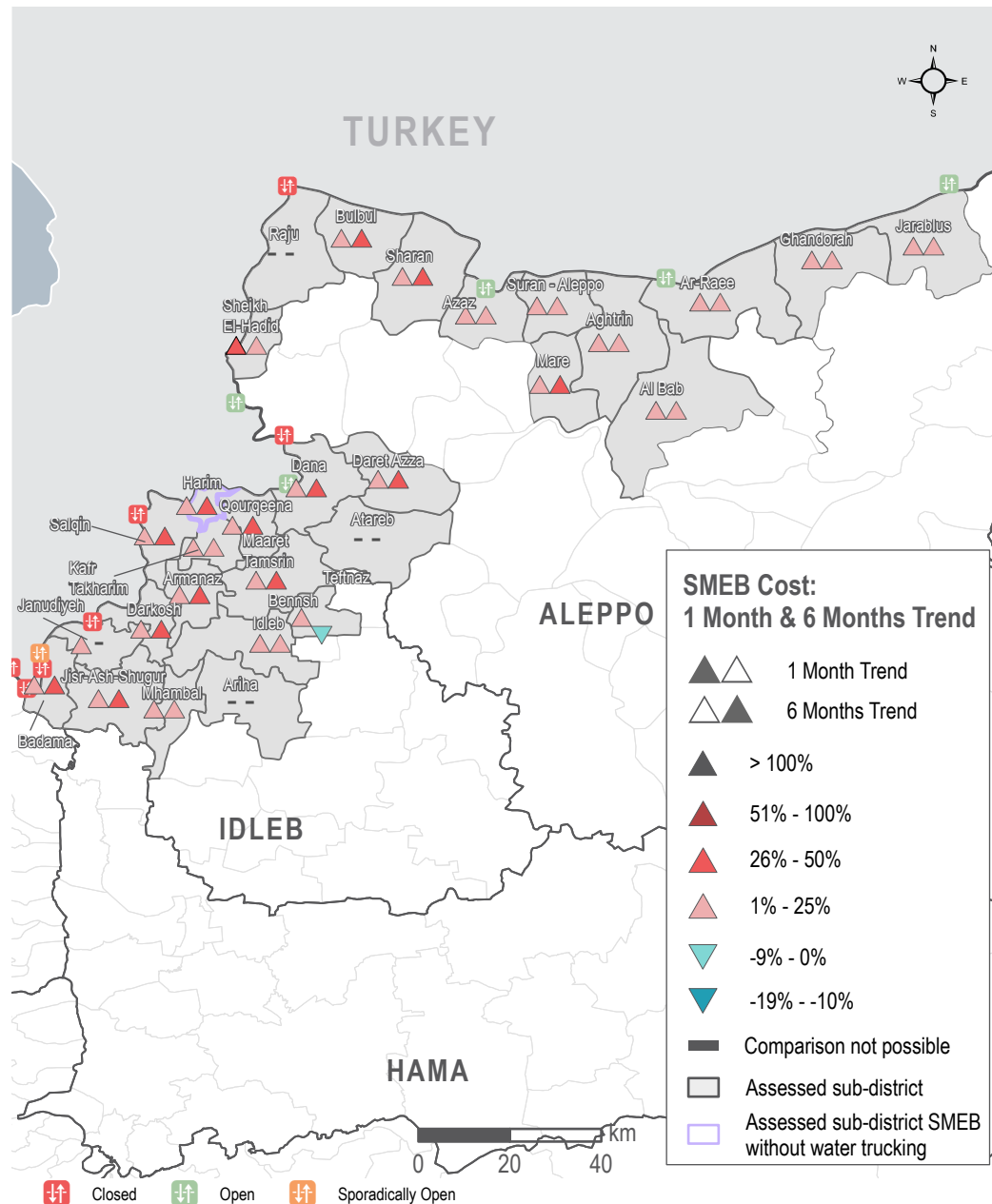
Note: Lack of data for a SMEB item does not necessarily imply a shortage.

SUB-DISTRICTS WITH INCOMPLETE SMEB IN DECEMBER

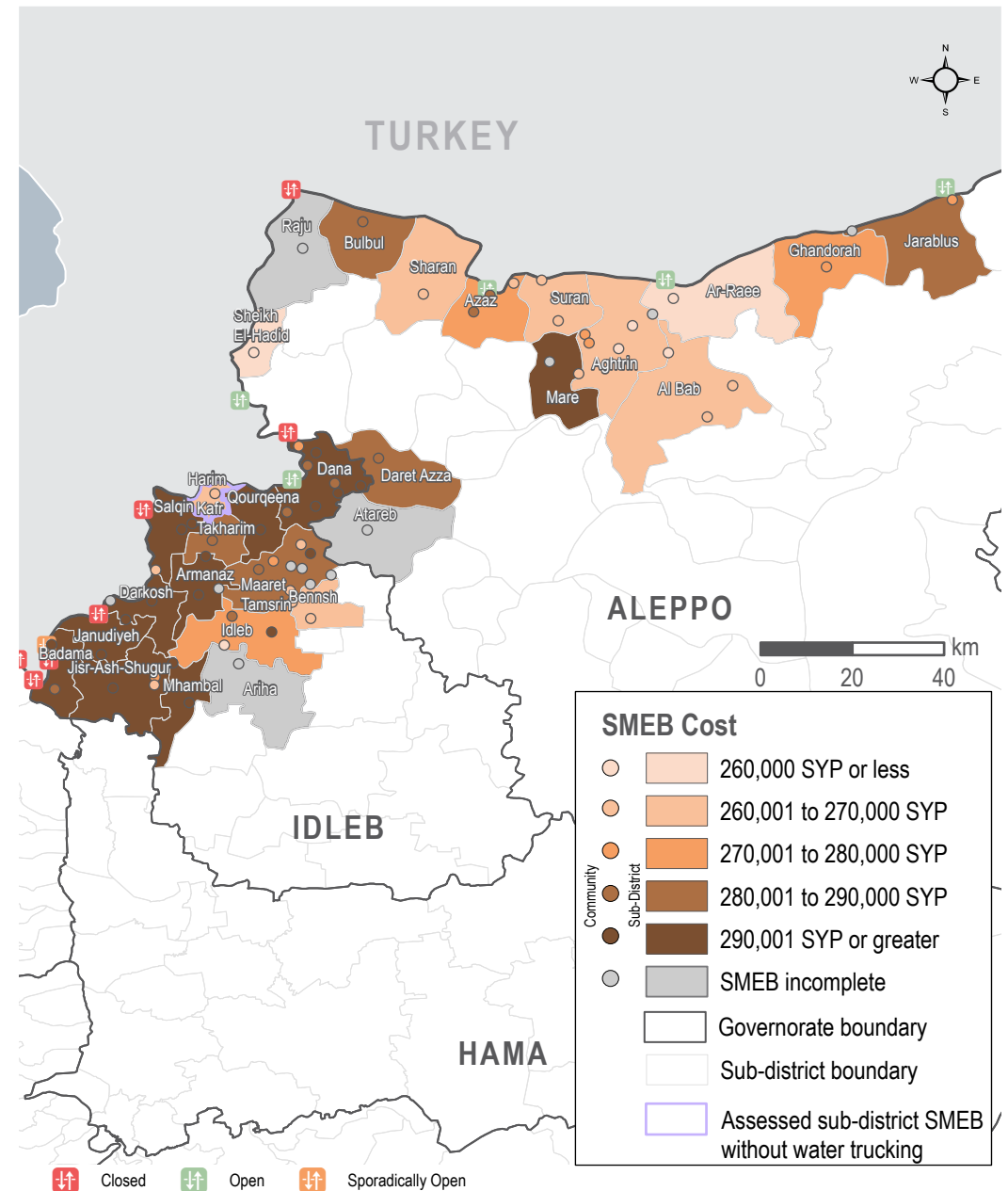
Ariha Bread, Kerosene
Atareb Toothpaste, LP Gas
Raju Bread, Chicken, Kerosene

Note: Lack of data for a SMEB item does not necessarily imply a shortage.

SMEB COST: ONE MONTH & SIX MONTHS TREND



SMEB COST RANGES (SYP), BY SUB-DISTRICTS & COMMUNITIES



NORTHWEST SYRIA - SMEB FOOD ITEMS

Idleb, Western & Northern Aleppo governorates

MEDIAN SMEB COST: FOOD ITEMS

See Page 1, Syrian Pounds

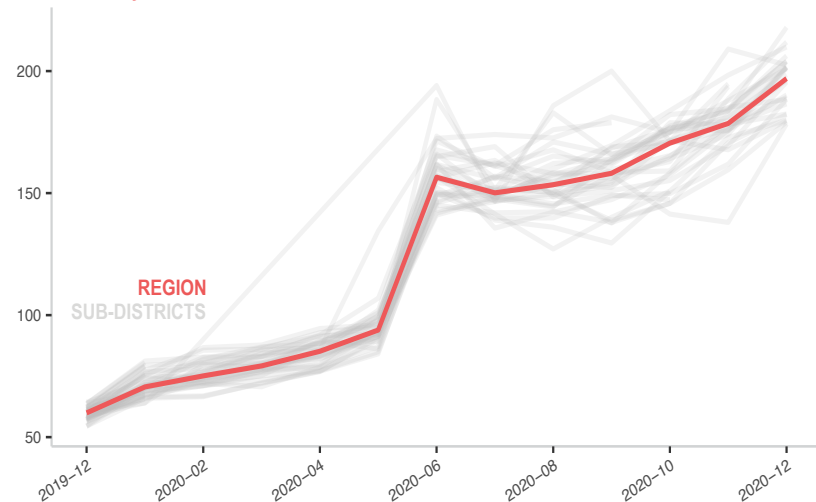
Sub-district	SMEB Food	One month change	Six month change
Northwest Syria	196,954	11%	25%
Aghtrín	182,200	7%	26%
Al Bab	179,138	12%	12%
Ariha	NA	NA	NA
Armanaz	206,238	12%	28%
Ar-Ra'ee	179,850	4%	15%
Atareb*	202,488	-3%	17%
A'zaz	195,500	15%	19%
Badama	203,875	10%	26%
Bennsh*	188,400	2%	0%
Bulbul	189,155	6%	34%
Dana	200,990	7%	28%
Daret Azza	201,435	11%	27%
Darkosh	217,920	19%	40%
Ghandorah	188,438	16%	26%

Sub-district	SMEB Food	One month change	Six month change
Harim	186,550	5%	28%
Idleb	190,188	8%	10%
Janudiyeh	209,890	6%	26%
Jarablus	196,954	12%	22%
Jisr-Ash-Shugur	201,845	14%	35%
Kafr Takharim	204,075	11%	22%
Maaret Tamsrin	196,213	9%	31%
Mare'	201,450	15%	38%
Mhambal	211,870	12%	24%
Qourqeena	198,508	10%	28%
Raju*	NA	NA	NA
Salqin	201,540	16%	29%
Sharan*	179,700	7%	27%
Sheikh El-Hadid	178,300	29%	14%
Suran	182,400	2%	23%

* For this sub-district, more than 50% of the SMEB food items median price rely on less than 3 observations.

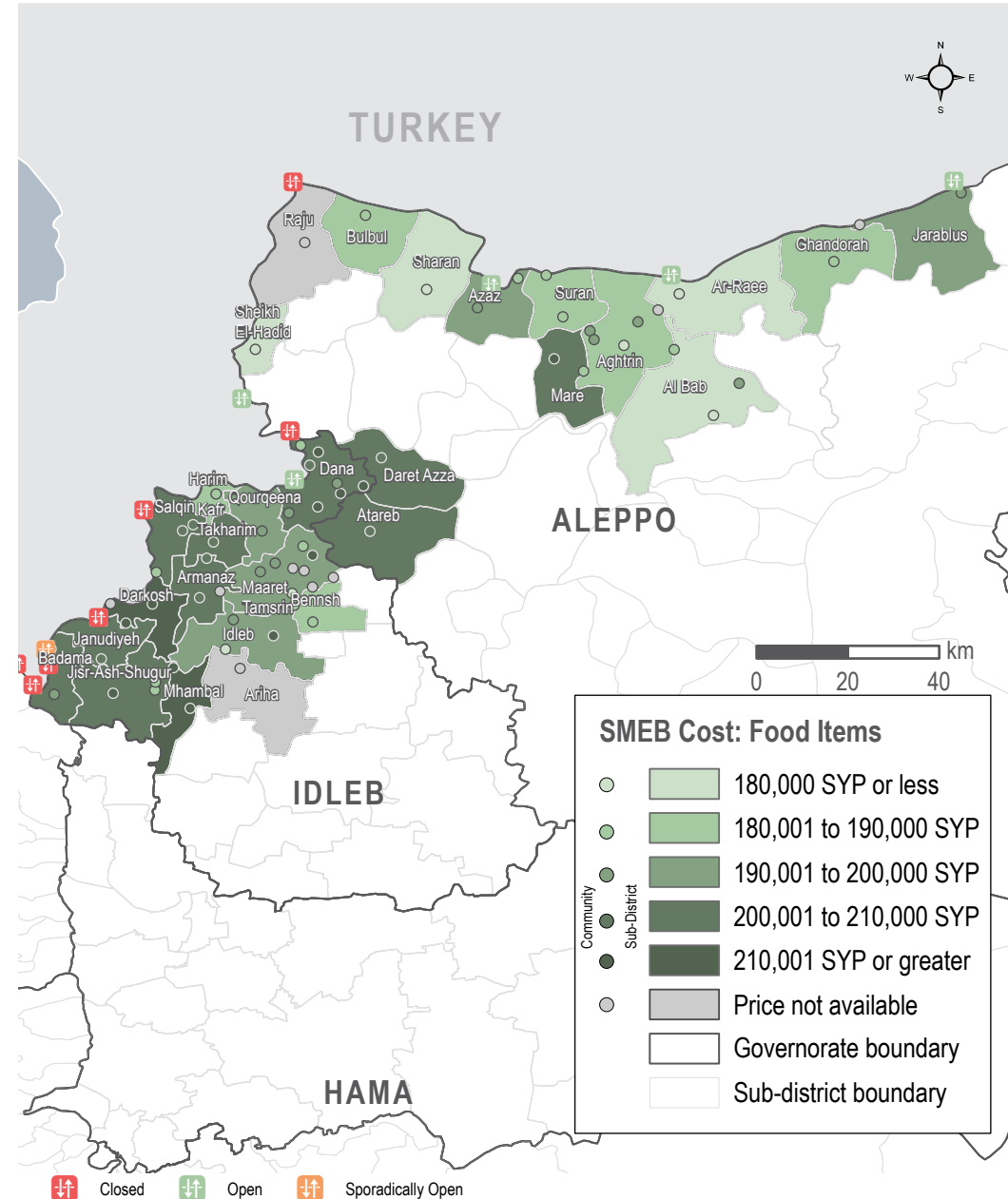
MEDIAN SMEB COST: FOOD ITEMS, BY MONTH

Thousand Syrian Pounds



SMEB FOOD ITEMS' COST

Sub-districts & Communities, Syrian Pounds



MEDIAN SMEB COOKING FUEL PRICE

Kerosene 25L, Syrian Pounds

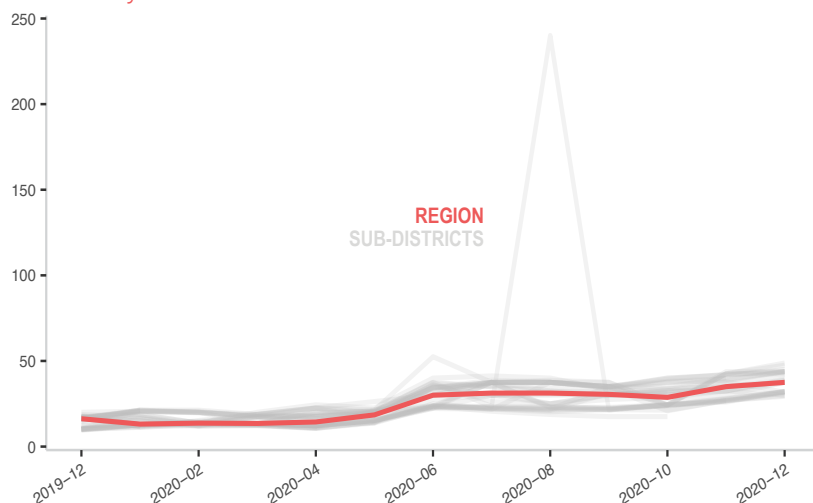
Sub-district	SMEB Cooking Fuel	One month change	Six month change
Northwest Syria	37,500	7%	15%
Aghtrín	38,750	11%	41%
Al Bab	38,750	19%	11%
Ariha	32,250	24%	42%
Armanaz	43,750	10%	27%
Ar-Ra'ee	30,000	-8%	-17%
Atareb*	42,000	14%	-20%
A'zaz	37,500	25%	5%
Badama	43,750	4%	27%
Bennsh	31,875	17%	-6%
Bulbul	45,000	8%	38%
Dana	43,750	14%	27%
Daret Azza	31,875	20%	34%
Darkosh	32,125	17%	35%
Ghandorah*	37,500	7%	0%

Sub-district	SMEB Cooking Fuel	One month change	Six month change
Harim	47,500	12%	104%
Idlib	31,250	17%	35%
Janudiyeh	32,125	14%	39%
Jarablus	37,500	15%	2%
Jisr-Ash-Shugur	42,500	0%	79%
Kafr Takharim	31,688	-16%	-16%
Maaret Tamsrin	43,750	4%	35%
Mare'	37,500	7%	67%
Mhambal	32,125	16%	34%
Qourqeena	48,750	15%	63%
Raju*	29,375	9%	24%
Salqin	43,750	12%	9%
Sharan	43,750	0%	27%
Sheikh El-Hadid	29,875	11%	34%
Suran	39,375	21%	31%

* For these sub-districts, the median prices of cooking fuels rely on less than 3 observations.

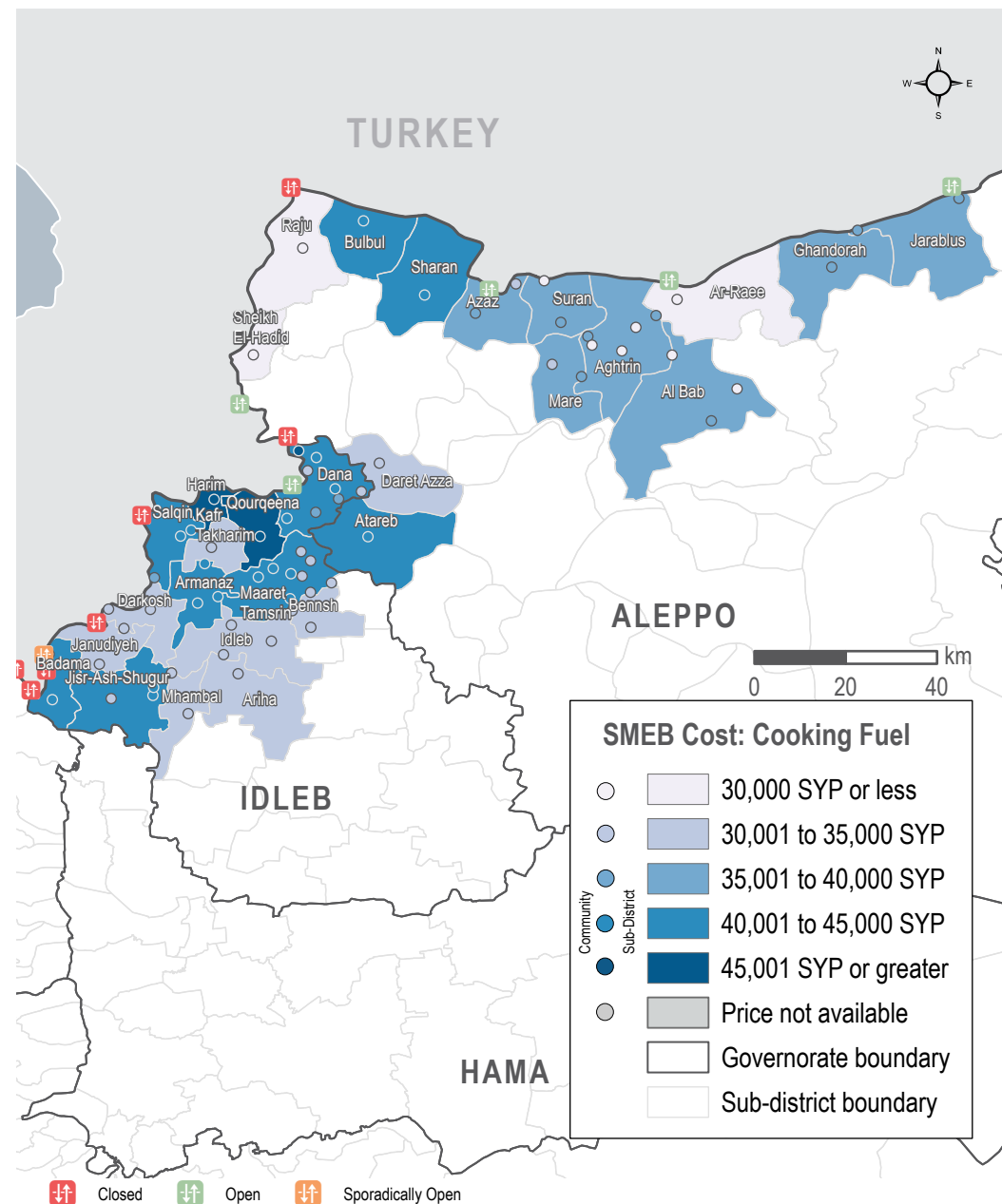
MEDIAN SMEB COOKING FUEL COSTS, BY MONTH

Thousand Syrian Pounds



SMEB COOKING FUEL COST

Sub-districts & Communities, Syrian Pounds



MEDIAN SMEB WATER TRUCKING PRICE

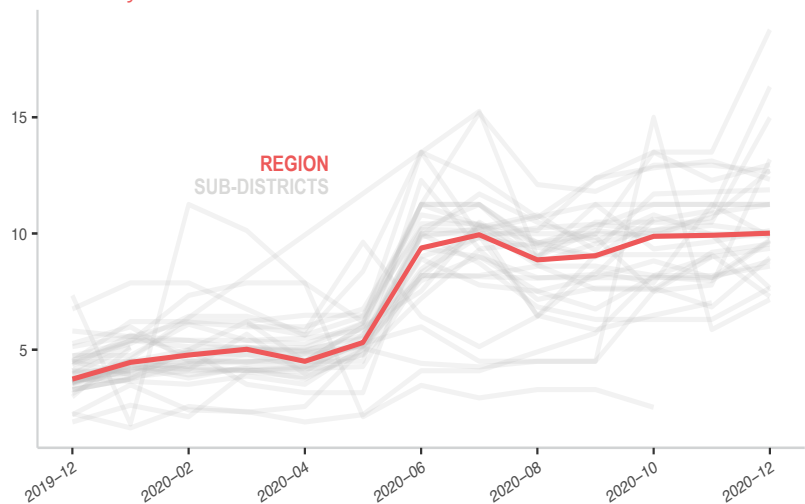
4,500L, Syrian Pounds

Sub-district	SMEB Water Truck	One month change	Six month change	Sub-district	SMEB Water Truck	One month change	Six month change
Northwest Syria	10,013	0%	4%	Harim*	NA	NA	NA
Agthrin	9,855	-12%	-12%	Idleb	18,765	39%	39%
Al Bab	12,668	-2%	13%	Janudiyeh	13,185	69%	120%
Ariha	7,290	-20%	13%	Jarablus	12,330	-6%	10%
Armanaz	8,949	31%	24%	Jisr-Ash-Shugur	9,900	0%	10%
Ar-Ra'ee	9,990	0%	0%	Kafr Takharim	9,545	4%	-3%
Atareb*	8,820	9%	-6%	Maaret Tamsrin	10,035	-3%	21%
A'zaz	10,125	5%	-25%	Mare'	16,313	49%	99%
Badama	7,650	-23%	-23%	Mhambal	12,713	19%	22%
Bennsh	7,650	21%	-23%	Qourqeena	7,159	22%	62%
Bulbul	11,880	1%	47%	Raju*	9,360	4%	-8%
Dana	9,720	20%	22%	Salqin	11,250	0%	33%
Daret Azza	9,675	21%	9%	Sharan	8,595	5%	5%
Darkosh	12,960	5%	5%	Sheikh El-Hadid	14,985	43%	99%
Ghandorah	11,250	0%	11%	Suran	11,250	3%	0%

* For this sub-district, the median price of water trucking relies on less than 3 observations.

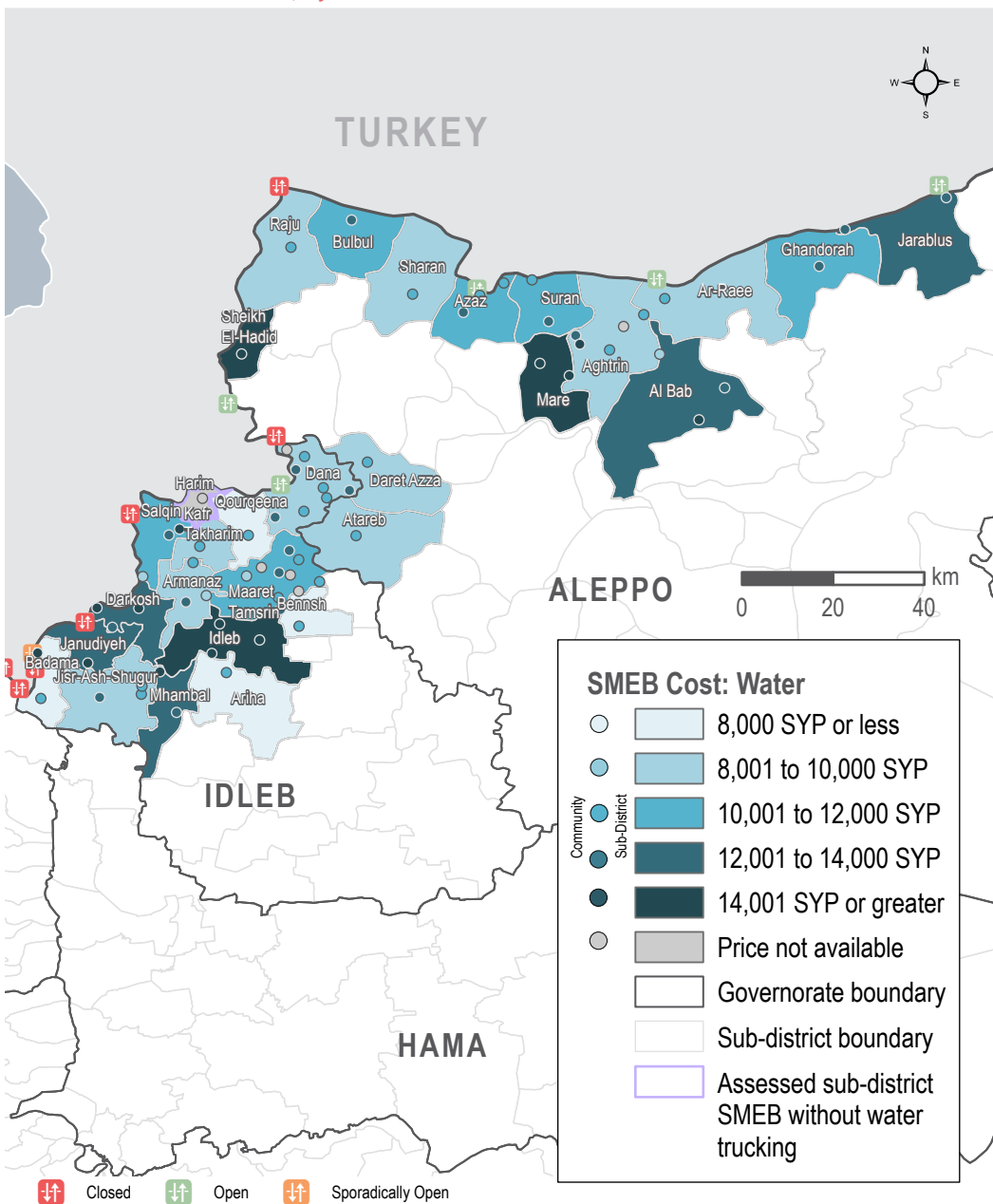
MEDIAN SMEB WATER TRUCKING COSTS, BY MONTH

Thousand Syrian Pounds



SMEB WATER TRUCKING COST

Sub-districts & Communities, Syrian Pounds



MEDIAN SMEB CELLPHONE DATA PRICE

1GB data, Syrian Pounds

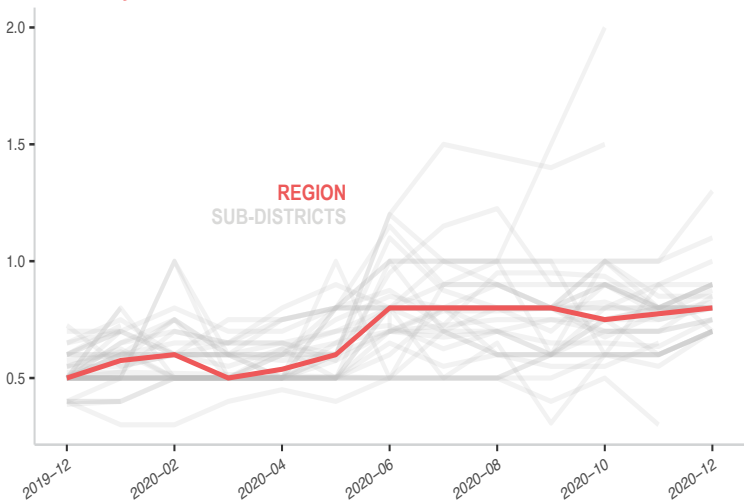
Sub-district	SMEB Data (1GB)	One month change	Six month change
Northwest Syria	800	0%	0%
Aghtrin	900	13%	13%
Al Bab	750	7%	-12%
Ariha	700	17%	-13%
Armanaz	800	7%	33%
Ar-Ra'ee	800	0%	60%
Atareb*	700	-22%	40%
A'zaz	900	13%	3%
Badama	850	21%	21%
Bennsh	700	27%	40%
Bulbul	825	6%	6%
Dana	800	0%	14%
Daret Azza	1,000	11%	-17%
Darkosh	700	17%	0%
Ghandorah	900	13%	-10%

Sub-district	SMEB Data (1GB)	One month change	Six month change
Harim	800	0%	0%
Idlib	700	17%	40%
Janudiyeh	800	0%	0%
Jarablus	900	0%	-22%
Jisr-Ash-Shugur	900	13%	13%
Kafr Takharim	875	13%	-8%
Maaret Tamsrin	800	7%	14%
Mare'	800	0%	-27%
Mhambal	700	17%	40%
Qourqeena	750	18%	3%
Raju*	1,100	10%	38%
Salqin	750	7%	-6%
Sharan	850	0%	6%
Sheikh El-Hadid	700	17%	-30%
Suran	1,300	30%	63%

* For this sub-district, the median price of cellphone data relies on less than 3 observations.

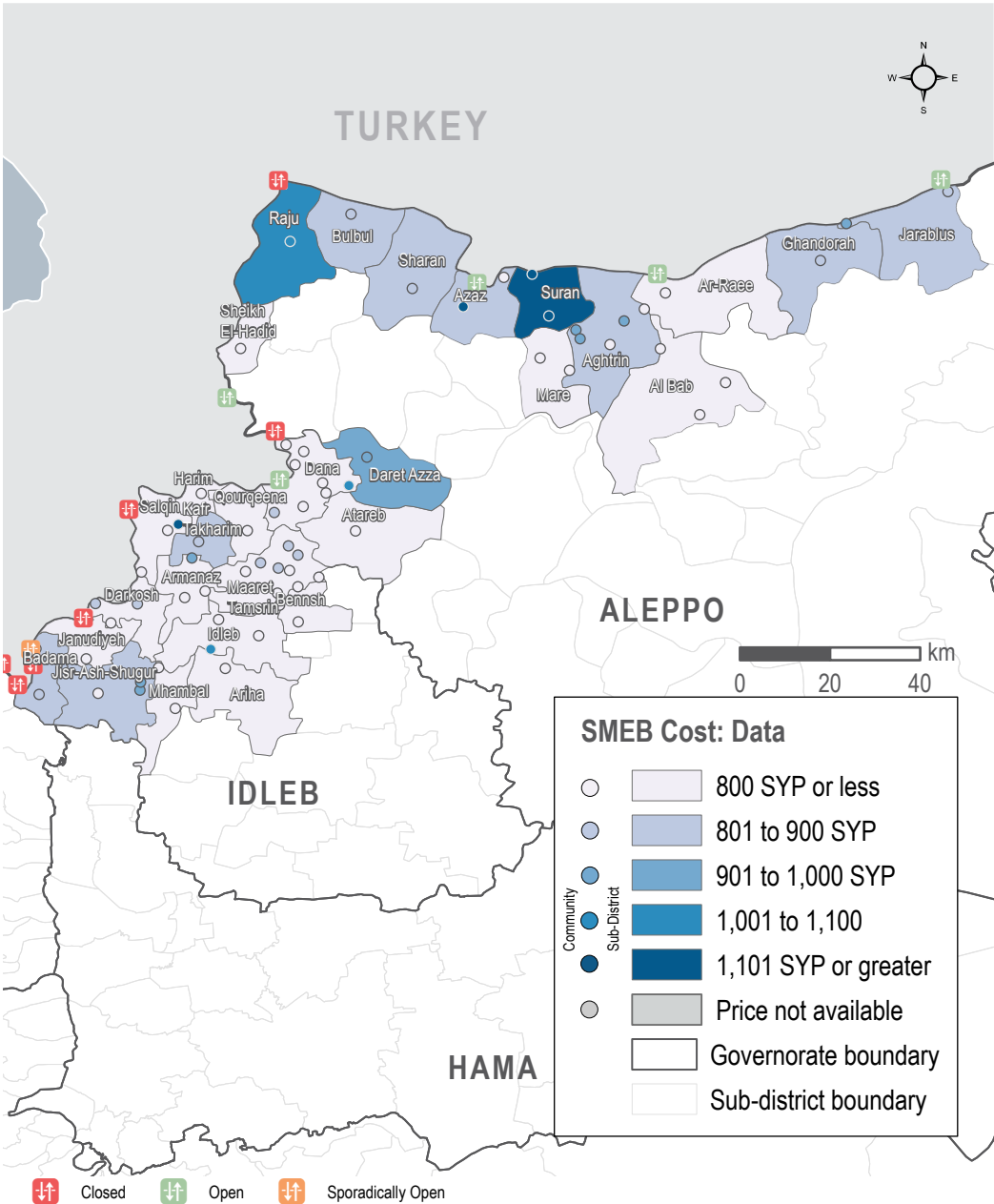
MEDIAN SMEB CELLPHONE DATA COST, BY MONTH

Thousand Syrian Pounds



SMEB CELLPHONE DATA COST

Sub-districts & Communities, Syrian Pounds



MEDIAN TRANSPORT FUEL PRICE

Diesel and Petrol, 1L (High Quality and Manually Refined), Syrian Pounds

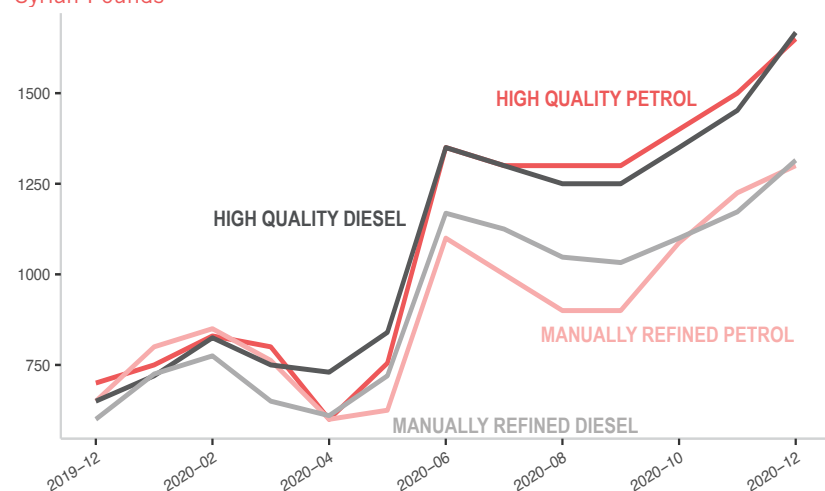
Sub-district	Transport Fuel	One month change	Six month change	Sub-district	Transport Fuel	One month change	Six month change
Northwest Syria	1,549	13%	21%	Harim	1,633	14%	34%
Agthrin	1,413	14%	20%	Idlib	1,583	13%	22%
Al Bab	1,366	8%	16%	Janudiyeh	1,667	16%	25%
Ariha	1,690	18%	38%	Jarablus	1,438	8%	7%
Armanaz	1,650	17%	18%	Jisr-Ash-Shugur	1,545	12%	25%
Ar-Ra'ee	1,463	15%	10%	Kafr Takharim	1,559	15%	10%
Atareb**	1,549	13%	21%	Maaret Tamsrin	1,564	9%	17%
A'zaz	1,425	23%	9%	Mare'	1,500	10%	32%
Badama	1,596	11%	22%	Mhambal	1,589	14%	20%
Bennsh	1,633	18%	29%	Qourqeena	1,633	20%	21%
Bulbul*	1,300	4%	15%	Raju**	1,383	4%	7%
Dana	1,567	11%	24%	Salqin	1,575	13%	28%
Daret Azza	1,565	9%	-4%	Sharan	1,493	-2%	21%
Darkosh	1,548	13%	21%	Sheikh El-Hadid	1,387	7%	21%
Ghandorah	1,438	8%	13%	Suran	1,413	16%	18%

* For this sub-district, more than 50% of the median prices for the items composing the transport fuel indicator rely on less than 3 observations.

** For this sub-district, all of the median prices for the items composing the transport fuel indicator rely on less than 3 observations.

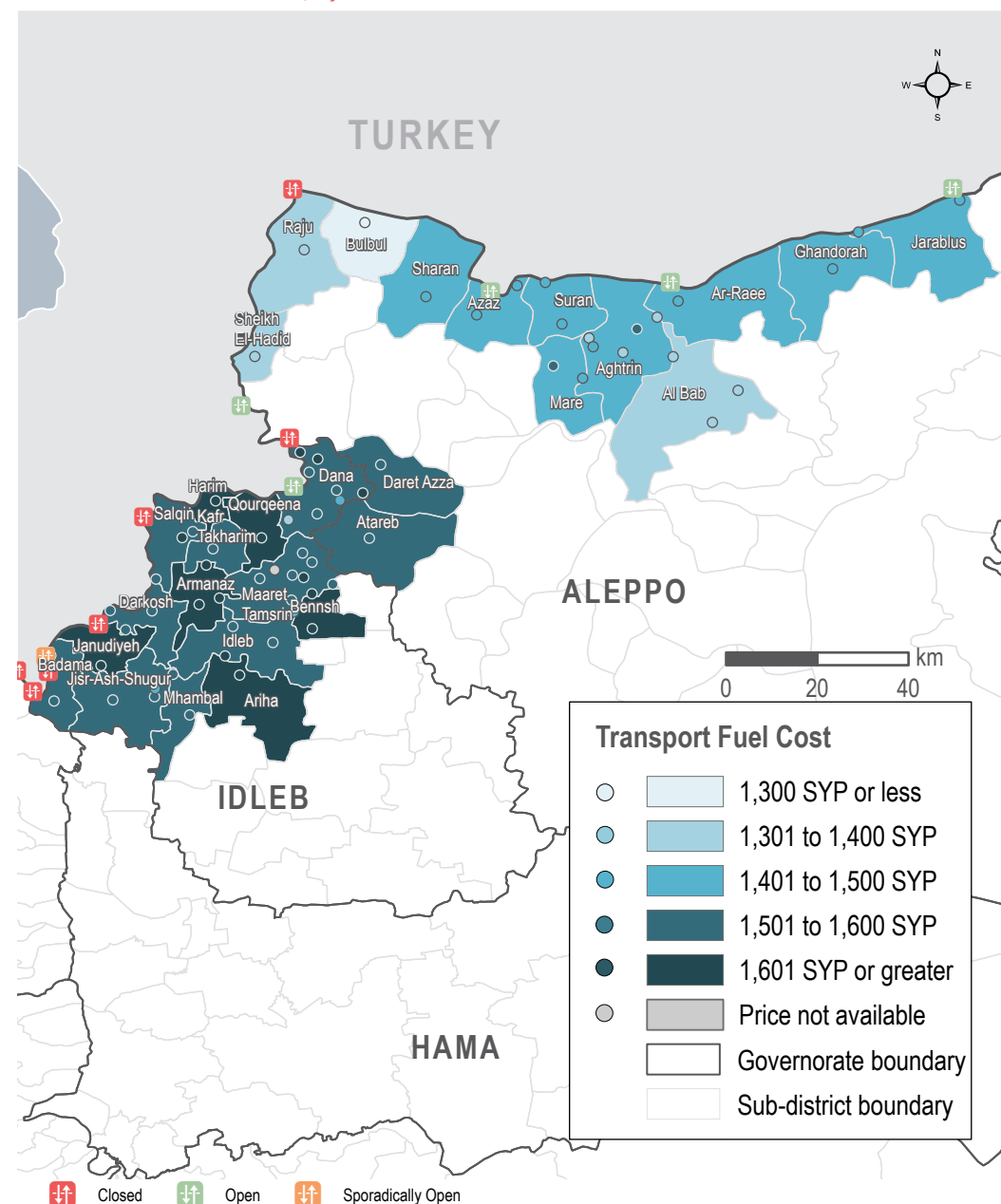
MEDIAN TRANSPORT FUEL COSTS, BY MONTH & TYPE

Syrian Pounds



TRANSPORT FUEL COST

Sub-districts & Communities, Syrian Pounds



NORTHWEST SYRIA - SMEB HYGIENE ITEMS

Idlib, Western & Northern Aleppo governorates

MEDIAN SMEB HYGIENE ITEMS' PRICE

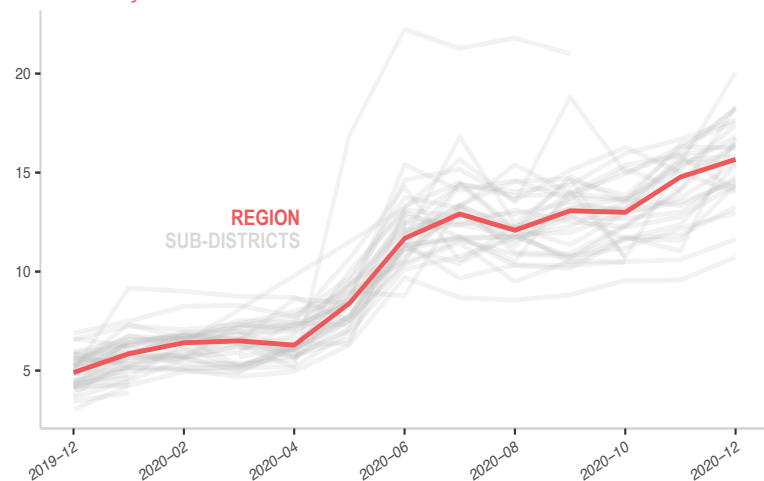
12 bars of soap, 4 packs of 10 sanitary pads, 3kg of laundry/dish soap, 200g of toothpaste, Syrian Pounds

Sub-district	SMEB Hygiene Items	One month change	Six month change	Sub-district	SMEB Hygiene Items	One month change	Six month change
Northwest Syria	15,667	6%	32%	Harim	15,500	0%	28%
Aghtrin	10,731	12%	11%	Idlib	16,325	10%	61%
Al Bab	14,375	13%	12%	Janudiyeh*	14,150	-10%	NA
Ariha	18,320	30%	19%	Jarablus	14,380	24%	10%
Armanaz	16,438	16%	36%	Jisr-Ash-Shugur	20,060	30%	72%
Ar-Ra'ee	14,522	7%	30%	Kafr Takharim	16,809	10%	26%
Atareb*	NA	NA	NA	Maaret Tamsrin	16,436	4%	55%
A'zaz	14,622	10%	2%	Mare'	15,450	13%	76%
Badama	17,654	6%	68%	Mhambal	12,976	7%	14%
Bennsh	14,000	-7%	-4%	Qourqeena	18,201	12%	57%
Bulbul	16,233	-1%	33%	Raju*	17,366	15%	56%
Dana	17,521	7%	41%	Salqin	16,750	52%	60%
Daret Azza	18,286	15%	33%	Sharan	15,833	1%	21%
Darkosh	14,806	14%	36%	Sheikh El-Hadid	11,625	10%	12%
Ghandorah	15,375	24%	23%	Suran	13,265	12%	18%

* For these sub-districts, all hygiene items median prices rely on less than 3 observations.

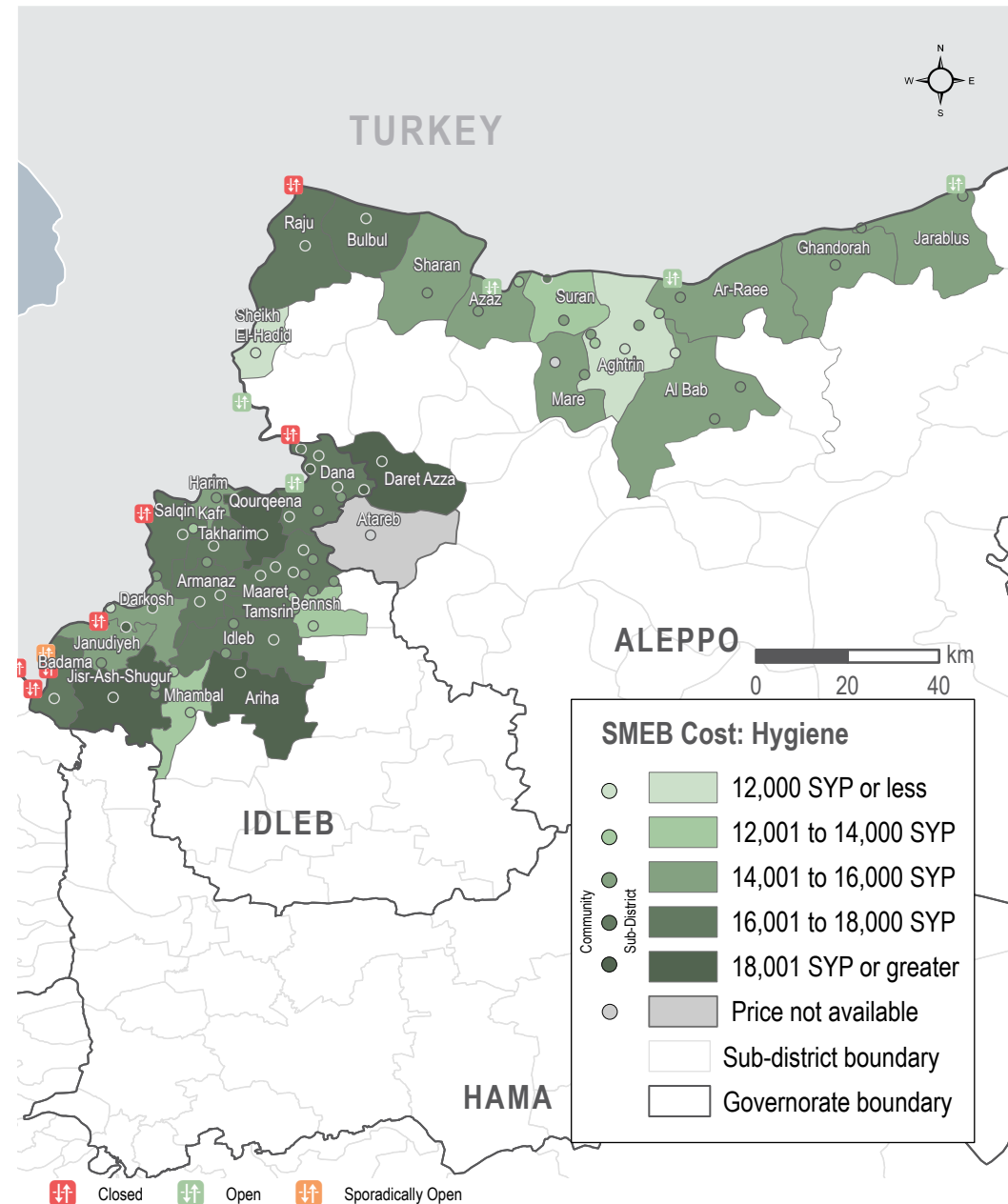
MEDIAN SMEB HYGIENE ITEMS' COSTS, BY MONTH

Thousand Syrian Pounds



SMEB HYGIENE ITEMS' COST

Sub-districts & Communities, Syrian Pounds



MEDIAN WINTERISATION ITEMS' PRICE

Per 1 piece/pair, Syrian Pounds

Sub-district	Jerrycan	Plastic sheet	Winter carpet	Kerosene/diesel heater	Winter blanket	Mattress	Solid fuel stove	Fire extinguisher	Fire blanket
Northwest Syria	3,500	13,500	75,000	35,000	9,000	11,250	35,000	44,500	31,500
Aghtarin	2,500	11,500*	70,000*	30,000*	8,500*	9,250*	46,000*	NA	NA
Al Bab	2,000	9,000	127,500	40,500	10,000	13,000	32,400	NA	NA
Ariha	NA	NA	NA	NA	NA	NA	NA	NA	NA
Armanaz	3,675	21,500	72,000	36,250	9,100	11,250	34,750	NA	36,000*
Ar-Ra'ee	3,500	20,000	75,000	40,000	28,000	12,000	34,400	NA	NA
Atareb	2,500*	12,000*	25,000*	22,000*	8,000*	10,000*	25,000*	NA	NA
A'zaz	3,500	12,000	80,000	10,000	8,500	12,500	28,000	NA	NA
Badama	4,000	17,500	85,000	38,000	8,500	11,500	73,000	NA	NA
Bennsh	2,800	12,500	28,000	24,000	7,500	9,500	26,000	NA	NA
Bulbul	3,500*	20,000*	73,000*	38,000*	8,000*	12,000*	75,000*	NA	NA
Dana	3,550	12,500	79,500	35,000	9,650	12,500	43,250	40,500	15,000
Daret Azza	2,500	10,000	100,000	34,000	13,000	13,500	38,000	NA	NA
Darkosh	3,800	13,600	81,000	40,000	10,800	10,500	33,500	NA	NA
Ghandorah	3,500*	19,500*	75,000*	38,000*	9,000*	12,000*	32,000*	NA	NA
Harim	3,000	15,000	75,000	33,000	5,000	7,000	82,000	NA	NA
Idleb	3,050	7,500	42,000	24,500	8,500	7,250	32,000	48,500*	31,500*
Janudiyeh	4,000*	13,000*	100,000*	42,000*	6,000*	11,000*	35,000*	NA	NA
Jarablus	3,400	21,500	86,400	59,500	27,000	12,200	35,200	NA	NA
Jisr-Ash-Shugur	3,500	14,000	80,000	52,000	10,000	10,500	25,000	NA	NA
Kafr Takharim	2,100	5,750	46,000	24,000	11,100	12,250	30,000	NA	NA
Maaret Tamsrin	3,500	16,500	73,000	33,500	8,000	11,000	76,000	NA	NA
Mare'	5,000	15,000	40,000	60,000	14,000	11,000	40,000*	NA	NA
Mhambal	3,500*	22,000*	95,000*	32,500*	31,500*	12,000*	65,000*	NA	NA
Qourqeena	3,500	15,000	74,000	32,000	4,000	8,500	83,000	NA	NA
Raju	NA	NA	NA	NA	NA	NA	NA	NA	NA
Salqin	3,250	9,750	79,000	36,500	5,000	14,000	40,000	NA	NA
Sharan	2,500	12,000	55,000	25,000	4,000	7,500	65,000	NA	NA
Sheikh El-Hadid	4,000	13,500	80,000	40,000	11,000	10,300	35,000	NA	NA
Suran	2,450	9,750	85,000	31,500	10,250	12,000	28,500	NA	NA

* For these sub-districts, the median price are relying on less than 3 observations.

** NA means data not available.

MEDIAN WINTERISATION ITEMS' PRICE - CLOTHES

Per 1 piece/pair, Syrian Pounds

Sub-district	Adult's hat	Children's hat	Second hand men's winter jacket	Second hand women's winter jacket	Second hand children's winter jacket	Second hand men's winter boots	Second hand women's winter boots	Second hand children's winter boots	Second hand adult's hat	Second hand children's hat	Men's winter jacket	Women's winter jacket	Children's winter jacket	Men's winter boots	Women's winter boots	Children's winter boots
Northwest Syria	2,800	1,750	8,600	8,500	5,000	6,000	6,000	3,750	1,263	925	33,250	39,500	21,500	13,625	14,075	8,000
Agthrin	2,400	1,600	6,750	5,500	4,000	5,500	4,000	3,750	1,500*	950*	20,000	21,000	17,000	15,000	10,000	8,000
Al Bab	2,400	1,900	6,000*	6,000*	4,250*	5,400*	4,000*	3,750*	NA	NA	29,800	32,300	17,850	19,200	13,600	9,250
Ariha	2,800*	2,000*	NA	NA	NA	NA	NA	NA	NA	NA	NA	NA	NA	NA	NA	NA
Armanaz	2,900	2,000	10,500	11,875	5,475	7,750	6,500	4,000	1,700	1,200	38,500	46,000	21,750	13,500	15,000	8,500
Ar-Ra'ee	1,800*	1,500*	6,500*	8,000*	5,250*	2,500*	2,500*	1,750*	850*	600*	61,000*	67,000*	44,000*	13,500*	15,000*	8,000*
Atareb	1,500*	1,000*	9,000*	9,000*	5,000*	5,000*	4,500*	4,000*	800*	800*	15,000*	17,000*	12,000*	8,000*	9,000*	7,500*
A'zaz	3,000	2,000	9,750	8,250	5,000	8,500	7,500	4,750	1,500	1,000	33,000	29,000	15,000	10,000	9,500	7,500
Badama	2,400	1,500	8,400*	10,500*	5,250*	7,500*	7,750*	4,000*	1,275*	800*	38,000	48,000	25,000	13,500	14,900	7,750
Bennsh	3,250*	1,600*	17,500*	22,000*	10,500*	9,000*	10,500*	5,000*	1,750*	1,000*	33,500*	46,500*	22,250*	13,250*	14,500*	9,000*
Bulbul	2,900*	1,650*	11,000*	13,500*	6,000*	8,000*	9,000*	4,000*	1,500*	1,000*	43,000*	54,000*	27,500*	15,000*	15,750*	7,750*
Dana	2,500	1,650	9,000	10,500	5,000	7,500	7,000	4,500	1,200	800	32,500	42,500	21,500	15,000	15,500	8,000
Daret Azza	2,250*	3,500*	6,500*	5,000*	3,500*	4,500*	3,000*	2,500*	700*	700*	24,000*	16,000*	11,750*	12,500*	10,500*	8,000*
Darkosh	3,000	1,750	10,500*	8,500*	6,000*	6,000*	4,000*	3,000*	1,500*	1,000*	38,500	40,000	27,000	12,500	12,000	7,250
Ghandorah	2,800*	2,000*	4,750*	4,250*	3,000*	4,750*	4,500*	3,500*	1,000*	900*	25,000*	28,000*	14,000*	15,000*	10,000*	7,000*
Harim	3,250*	2,000*	10,000*	12,000*	5,000*	7,000*	7,500*	3,500*	1,500*	1,000*	34,000*	39,000*	21,000*	15,000*	18,250*	10,500*
Idleb	3,000	2,250	10,750*	14,750*	5,750*	10,500*	12,250*	6,500*	2,250*	1,100*	29,500	36,500	20,000	17,500	20,750	10,000
Janudiyeh	2,000*	1,500*	8,500*	8,000*	5,500*	8,000*	6,500*	4,500*	1,500*	750*	38,500*	45,000*	21,500*	13,750*	14,500*	8,750*
Jarablus	2,900*	2,250*	7,000	5,500	3,000	4,500	4,500	3,000	1,000	800	42,850*	32,250*	22,150*	20,850*	14,150*	11,400*
Jisr-Ash-Shugur	2,200	1,500	6,000	8,000	4,000	4,500	3,500	2,500	1,000	500	33,000	40,000	22,000	13,000	14,000	8,000
Kafr Takharim	2,250*	2,250*	5,000	4,750	5,250	3,100*	1,500	2,000	800	750	26,000	36,500	22,500	10,000	9,500	8,000
Maaret Tamsrin	2,500	1,500	8,600	9,675	5,000	7,750	6,250	3,750	1,450	850	39,000	45,000	22,000	13,000	13,500	7,500
Mare'	3,000	2,800	9,000*	10,500*	5,500*	5,250*	5,750*	3,000*	1,500*	1,250*	28,000	24,000	20,000	14,000	12,000	8,000
Mhambal	2,700*	1,825*	11,875*	17,500*	5,250*	8,000*	8,375*	4,100*	1,250*	1,000*	48,500*	51,250*	25,750*	14,750*	15,625*	8,750*
Qourqeena	3,500	2,000	5,000	5,500	3,500	3,500	3,500	2,000	1,000	1,000	31,500	40,500	26,000	15,250	17,000	10,000
Raju	2,000*	1,500*	NA	NA	NA	NA	NA	NA	NA	NA	47,000*	27,000*	23,000*	28,000*	15,000*	10,000*
Salqin	3,000	1,750	11,000	15,000	4,500	5,000	6,000	3,000	1,100	1,000	43,500	50,000	17,750	14,250	15,250	8,000
Sharan	2,000*	1,500*	7,000*	8,000*	4,000*	5,000*	6,000*	3,500*	1,000*	800*	30,000*	38,000*	20,000*	9,000*	14,000*	7,000*
Sheikh El-Hadid	3,500*	1,750*	10,000*	15,000*	6,000*	7,000*	9,000*	5,000*	1,500*	1,000*	40,000*	45,000*	18,500*	11,000*	14,000*	7,500*
Suran	3,000	2,000	8,500	7,000	4,500	8,000	7,000	5,000	1,000	750	30,000	29,000	15,000	10,500	9,250	7,250

* For these sub-districts, the median price is relying on less than 3 observations.

** NA means data not available.

MEDIAN ALTERNATIVE FUELS PRICE

Per 1 kilo, Syrian Pounds

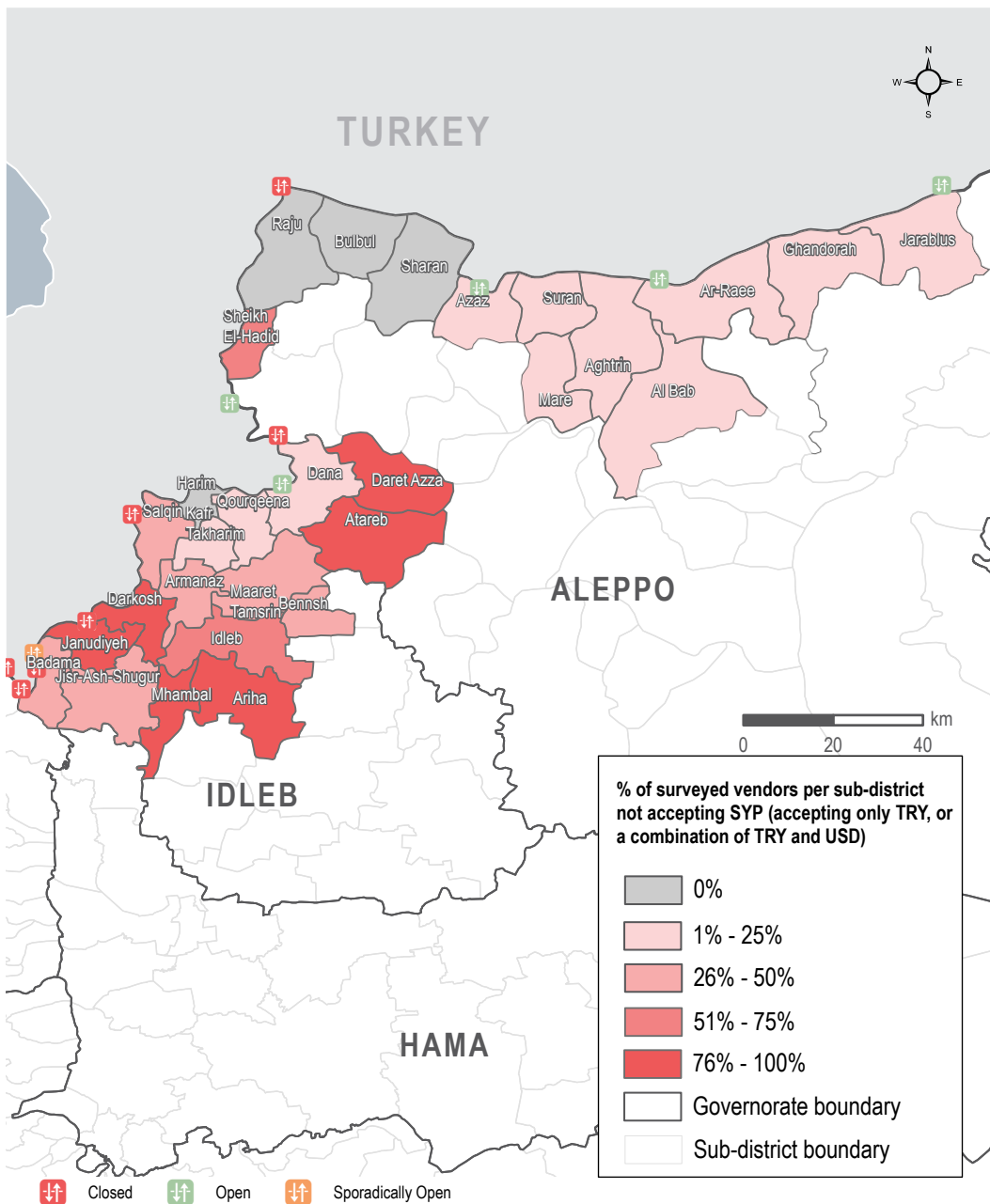
Sub-district	Firewood	Olive residues	Pistachio shells	Coal
Northwest Syria	350	329	400	331
Agthrin	350	300	370	325
Al Bab	390	375	389	400
Ariha	380*	NA	NA	440*
Armanaz	348	328	358	310
Ar-Ra'ee	425	300	NA	400
Atareb	350*	350*	400*	400*
A'zaz	325	325	400	325
Badama	388	350	388	292
Bennsh	350	375	500	350
Bulbul	375	325	400	285
Dana	342	322	382	300
Daret Azza	400	340	430	400
Darkosh	300	350	NA	325*
Ghandorah	325	310	NA	350
Harim	400	350	400	300
Idleb	350	260	400	400
Janudiyeh	400*	350*	388*	338*
Jarablus	345	268	401	408
Jisr-Ash-Shugur	322	268	340	240
Kafr Takharim	355	340	450	105
Maaret Tamsrin	390	330	375	280
Mare'	338	280	400*	298
Mhambal	348	NA	NA	455
Qourqeena	400	375	450	350
Raju	NA	NA	NA	NA
Salqin	350	325	375	318
Sharan	350	250	350	300
Sheikh El-Hadid	300	350	400	375
Suran	362	362	390	362

* For these sub-districts, the median price is relying on less than 3 observations.

** NA means data not available.

SURVEYED VENDORS NOT ACCEPTING SYRIAN POUNDS

Sub-districts



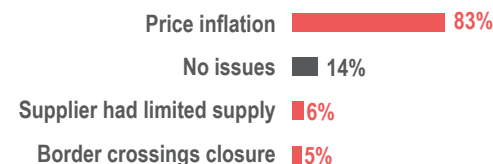
MARKET FUNCTIONALITY

During the data collection period, only 1 out of the 2,192 surveyed vendors across Aleppo and Idleb governorates reported having closed their shops.

SUPPLY CHALLENGES

In December, vendor supply challenges remained similar to those reported in November. Of 2,182 surveyed vendors in NWS, 86% reported facing one or more supply challenges in December. As in previous months, price inflation was the most commonly reported supply challenge, reported by 83% of vendors. This was most commonly reported in Idleb governorate where 91% of vendors reported this issue. Beyond price inflation, 6% of vendors reported that their suppliers had limited supply, and 5% reported that the closure of border crossings created a supply challenge (see figure 1).

Figure 1: Top four most commonly reported supply challenges by surveyed vendor (2,222 respondents)*



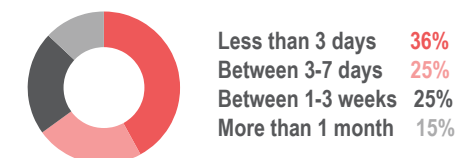
*Multiple answers allowed, thus findings may exceed 100%

RESTOCKING

While supply challenges were reported, nearly all vendors reported that they would be able to restock if they were to run out of supplies, with only 7 out of the 2,182 surveyed vendors reporting that they would be unable to do so. However, many vendors reported having limited amounts of backstock to draw upon from their own supplies. Surveyed vendors were asked after how many days they would hypothetically run out of stock if supply was to be cut; 36% of respondents reported that they would run out of stock in less than 3 days and 25% reported they would run out in 3 to 7 days (see figure 2). Among surveyed vendors, water trucking vendors, butchers, and vegetable vendors most frequently reported that they would run out in

less than 3 days if their supply lines were cut, with percentages ranging from 90% to 75% for surveyed vendors depending on the shop type.

Figure 2: Reported number of days before all types of vendors would hypothetically run out of stock, if supply lines were to be cut (2,182 respondents)



AVAILABILITY OF USD BANKNOTES

Of the 169 surveyed informal exchange vendors who were asked if they had limited stock of any USD banknote denominations, 85% of surveyed vendors in Aleppo governorate and 100% of surveyed vendors in Idleb governorate reported having limited stock of one or more denominations. Shortages of small banknotes were most commonly reported in Idleb governorate, most frequently for 20 USD banknotes (reported by 80% of surveyed vendors), 10 USD banknotes (72%), and 5 USD banknotes (62%). In Aleppo, 10 and 20 USD banknotes were most commonly reported to be limited in stock (both by 63% of surveyed vendors).

CURRENCIES ACCEPTED

Surveyed vendors were also asked about the type(s) of currencies they accepted in their shops. In December, only 10% of surveyed vendors reported selling their goods exclusively in SYP. While vendors in both governorates most commonly reported selling goods in both SYP and TRY, differences in currency usage between governorates were noted. Twenty-nine percent (29%) of surveyed vendors in Aleppo reported selling their goods in SYP only, compared to 0% of vendors in Idleb reporting the same. Further, 37% of surveyed vendors in Idleb reported selling items in TRY only, compared to only 11% in Aleppo. Additionally, 21% of vendors in Idleb reporting accepting currency combinations that included the USD, compared to 12% in Aleppo.



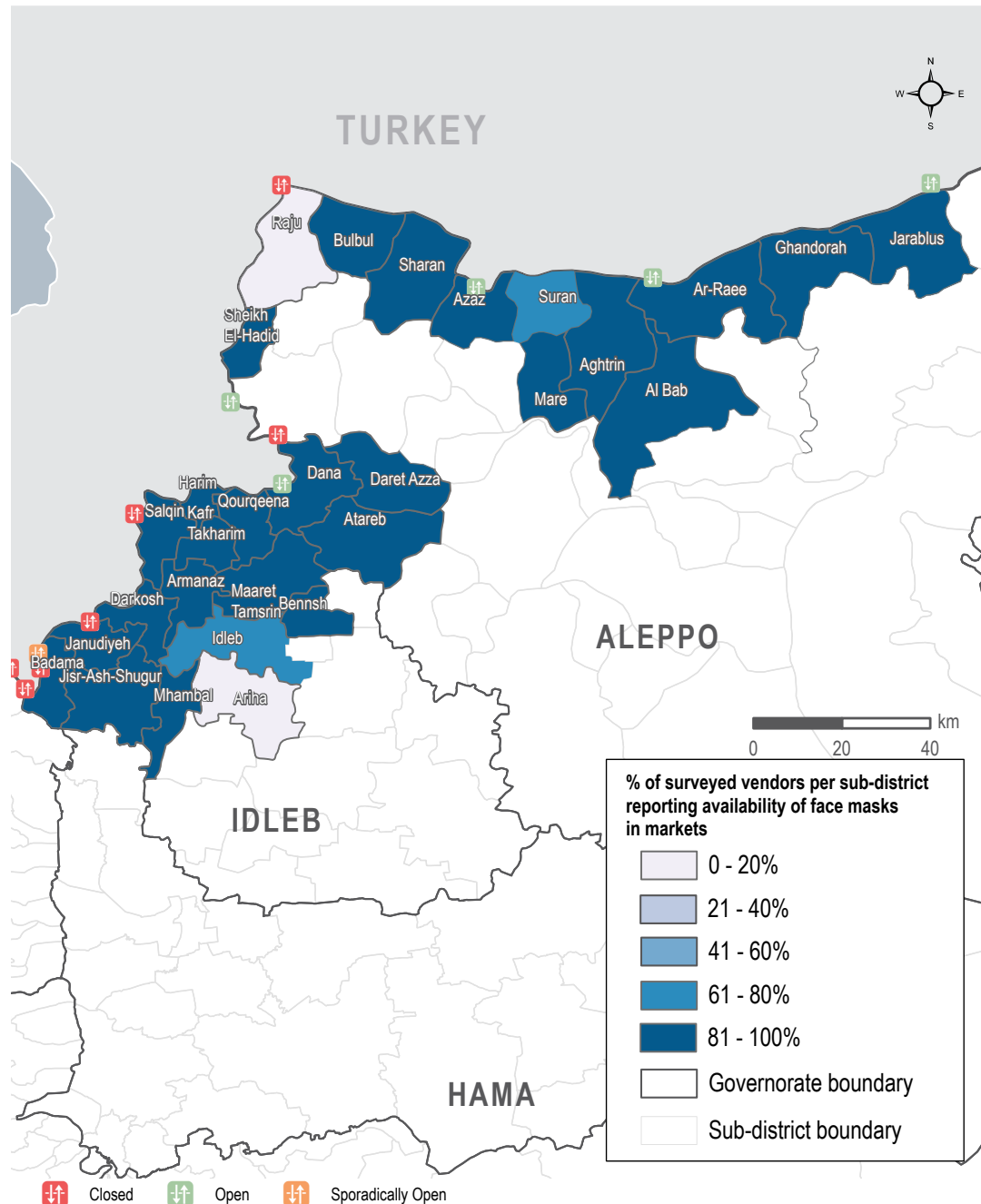
MEDIAN PRICE OF COVID-19 ITEMS Syrian Pounds

Sub-district	Face mask (1 piece)	Plastic gloves (box of 100)	Sterile alcohol (1 litre)	Hand sanitiser (500 ml)	Bottled bleach (1 litre)	Trash bags (roll of 30)
Northwest Syria	400	16,000	7,350	4,125	1,450	3,225
Aghtrín	350	16,000	6,000	4,500	1,400	2,000
Al Bab	400	16,000	7,500	4,000	1,550	2,000
Ariha	NA	21,250*	NA	NA	1,750	NA
Armanaz	400	16,200	10,500	4,950	1,500	3,275
Ar-Ra'ee	400	17,500	5,500	1,500	1,600	1,800
Atareb	150*	11,000*	12,000*	7,000*	1,300*	2,200*
A'zaz	250	21,500	7,000	3,500	1,700	1,800
Badama	312	17,250	6,850	4,150	1,650	3,500
Bennsh	500	13,500	16,500	7,900	1,200	4,200
Bulbul	350	16,700	5,200	3,500	1,800	3,400
Dana	375	16,150	7,500	4,500	1,700	3,200
Daret Azza	400	16,000	6,500	4,200	1,500	2,300
Darkosh	550	17,200	16,000	6,000	1,400	3,500
Ghandorah	300	21,200	5,400*	2,600	1,400	1,380
Harim	400	15,500	5,600	3,500	1,300	3,400
Idleb	475	11,400	7,000	5,750	1,300	3,600
Janudiyeh	250	18,500	8,500	5,000	1,400	3,800*
Jarablus	300	18,350	6,800	3,000	1,450	1,380
Jisr-Ash-Shugur	350	11,500	7,500	3,750	1,300	4,200
Kafr Takharim	350	14,300	7,200	4,100	1,300	2,700
Maaret Tamsrin	400	16,000	5,500	3,500	1,500	3,400
Mare'	500	16,000	8,000	4,500	1,500	2,500
Mhambal	500	32,400	21,250	5,250	1,400	1,800
Qourqeena	400	17,500	7,500	3,700	1,750	3,400
Raju	200*	13,500*	10,000*	1,500*	2,250*	1,500*
Salqin	500	14,750	8,000	4,000	1,300	3,300
Sharan	500	16,000	4,000	3,500	1,300	3,250
Sheikh El-Hadid	500	25,000	19,000	5,500	1,000	3,500
Suran	350	15,500	6,500	4,500	1,600	2,000

* For these sub-districts, the median price is relying on less than 3 observations.

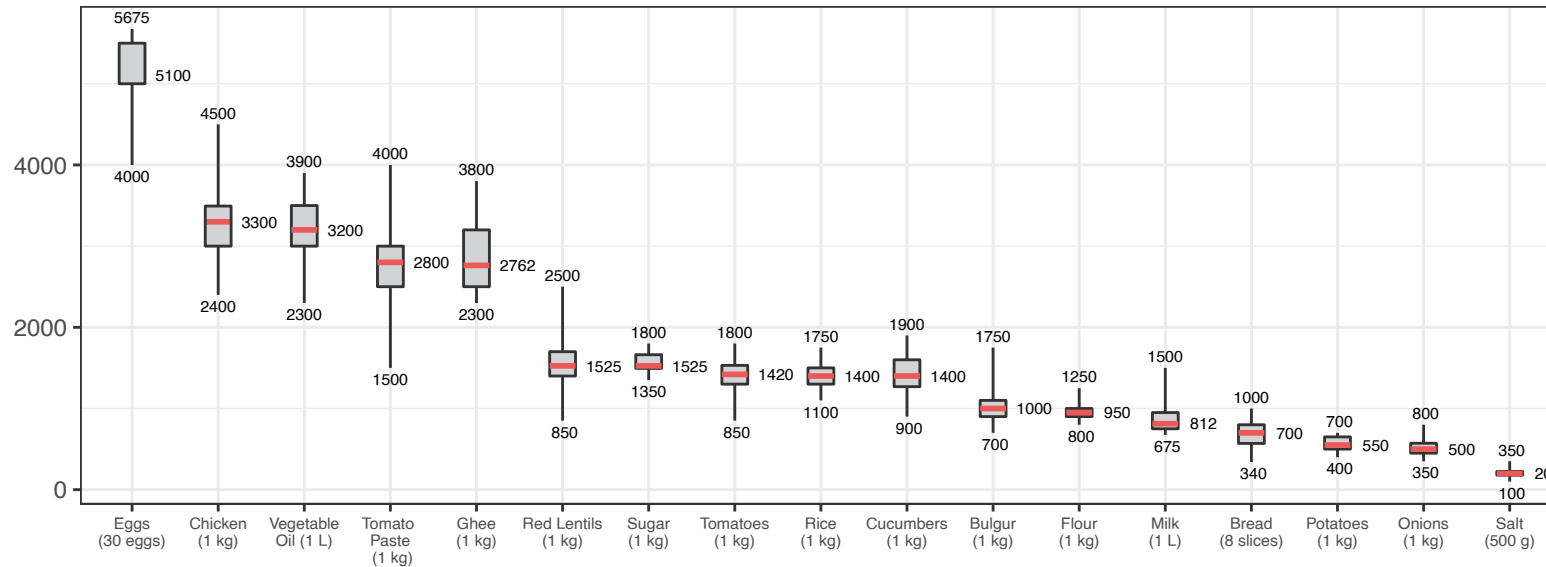


AVAILABILITY OF FACE MASKS Sub-districts



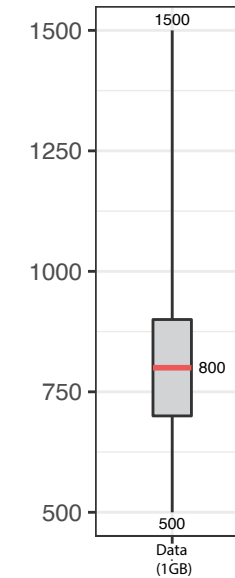
ASSESSED FOOD ITEMS

Syrian Pounds



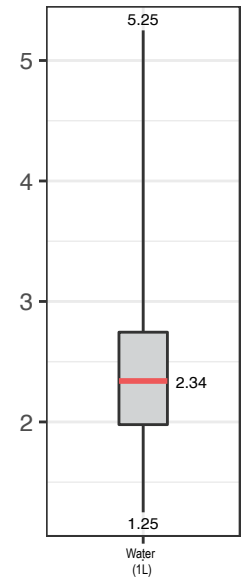
CELLPHONE DATA

Syrian Pounds



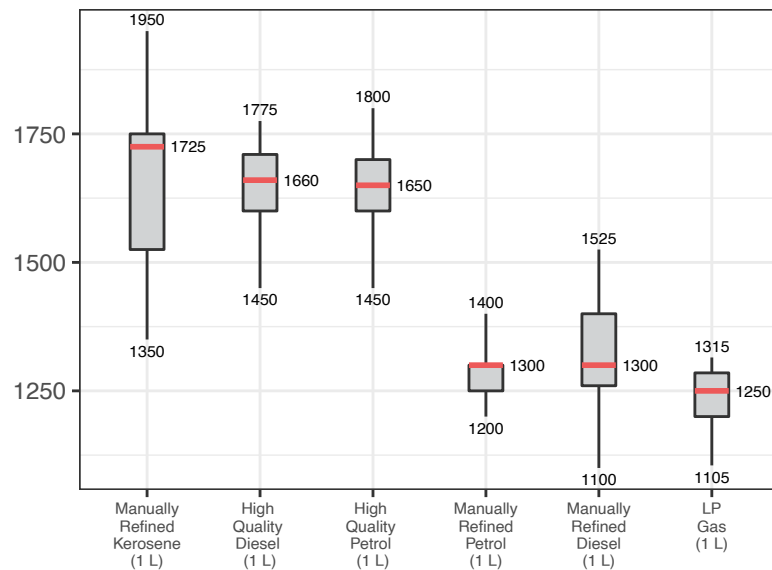
WATER TRUCKING

Syrian Pounds



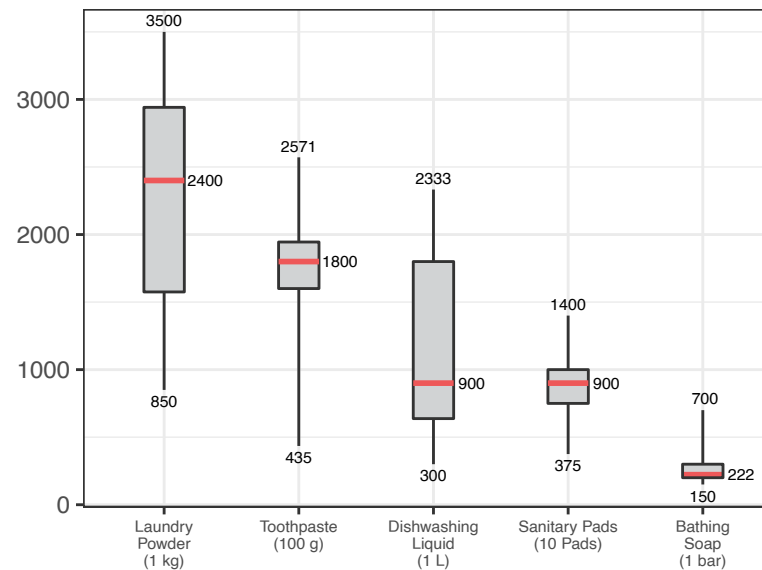
ASSESSED FUEL ITEMS

Syrian Pounds

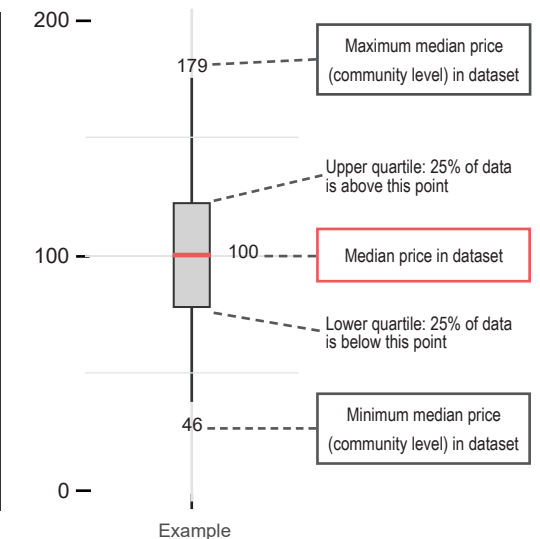


ASSESSED HYGIENE ITEMS

Syrian Pounds



READING BOXPLOTS



METHODOLOGY

In order to be included in the Syria Market Monitoring Exercise, markets must be permanent in nature, large enough to support at least two wholesalers, and diverse enough to provide a sufficient variety of goods and commodities. Additionally, the shops surveyed within each market must be housed in permanent structures and must sell certain items to be eligible for inclusion. Participating organisations train their enumerators on the Market Monitoring methodology and data collection tools using standard training materials developed by REACH. Each enumerator aims to assess three to five shops of each type in the main market in their assigned community/ neighbourhood, using surveys to collect information about the cheapest prices of each item and whether there are any barriers in the supply chain. In sub-districts where direct surveying by enumerators is not possible, data collection is conducted remotely through key informants such as shop owners, suppliers and consumers. A survey form is deployed on KoBo each month to capture price and stock information from different types of establishments, including grocery stores, fuel traders, currency exchange shops, water trucking services and mobile phone shops, among others. Nearly all participating partners submit their data to these KoBo forms, using the KoBoCollect Android app to upload data. A small number of partners, by prior permission, collect data using fully harmonised data collection tools deployed on other platforms, then submit their raw data to REACH for standardisation, compilation and cleaning.

Following data collection, REACH compiles and cleans all partners' data, normalising prices and cross-checking outliers. The cleaned data is then analysed by SMEB costs, components of the SMEB, and by commodities. These trends are observed at the sub-district-level and, when possible, at the community-level. Prices are divided into quartiles and boxplots are created

to assist CWG members in understanding the distribution of prices across the northeast and northwest of Syria. To illustrate local variations in prices and availability, REACH uses the collected data to map the price of the SMEB in each sub-district and adds illustrations of surrounding border crossings, with data sourced from the United Nations Office for the Coordination of Humanitarian Affairs (OCHA). In addition, each SMEB component costs and transport fuel prices are graphed to visualise trends over time.

The cleaned datasets are available on the [Humanitarian Data Exchange](#) website and the [REACH Resource Centre](#) and are distributed to all participating partners, as well as to interested clusters and the broader humanitarian community.

Calculating 'median cheapest price'

The regional figures are calculated by taking the median of the minimum-reported prices of a region's sub-districts. In turn, the sub-district medians are calculated using the Market Monitoring base-data.

Calculating Survival Minimum Expenditure Basket (SMEB) costs

The cost of a SMEB is calculated for each assessed sub-district by calculating the median cheapest price of each SMEB commodity in that sub-district, then multiplying these medians by the number of units that an average Syrian household requires to purchase in a month. The composition of the SMEB can be found on [page 1](#). SMEB vegetables include potatoes, tomatoes, onions, and cucumbers.

Calculating price trends over time

One month and six-month price changes and trends in this factsheet are calculated only with the comparable assessed communities of a sub-district with consistent coverage across months. On the other hand, in the dataset, medians are calculated taking all

assessed communities for the current month in consideration. Therefore, prices and percentage changes within the tables of this factsheet may slightly differ from the current month's dataset medians. In the narrative, both regional median SMEB values are shared; the SMEB value including all assessed communities that specific month, and the SMEB value only taking in consideration communities with consistent coverage since the previous month.

Changes to coverage

Given security and access constraints in the south of Syria, data collection has been unable to take place since July 2018. Escalation of conflict in October 2019 has resulted in limited coverage in northeast Syria in the months following the escalation.

Challenges and limitations

As the Syria Market Monitoring Exercise currently includes 26 partners based in 2 hubs, achieving a consistent approach is inherently challenging. Participating organisations are therefore requested to adopt harmonised data collection methodologies and tools to ensure that the data uploaded is as accurate as possible. Since this exercise collects data directly from vendors and relies on partner organisations for its wide coverage, Market Monitoring may sporadically lose coverage temporarily or for longer periods of time due to challenges in accessing locations or loss in the shared data collection capacity of the project. This impacts the ability to report on trends, as can be seen in the line graphs and 'NA' values in the tables.

ABOUT REACH

REACH Initiative facilitates the development of information tools and products that enhance the capacity of aid actors to make evidence-based decisions in emergency, recovery and development contexts. The methodologies used by REACH include primary data collection and in-depth analysis, and all activities are conducted through inter-agency aid coordination mechanisms. REACH is a joint initiative of IMPACT Initiatives, ACTED and the United Nations Institute for Training and Research - Operational Satellite Applications Programme (UNITAR-UNOSAT). For more information please visit our website:

www.reach-initiative.org. You can contact us directly at: geneva@reach-initiative.org and follow us on Twitter [@REACH_info](https://twitter.com/REACH_info).

ABOUT THE CASH WORKING GROUP

The Cash Working Group (CWG) was established in May 2014 to analyse the impact of the ongoing conflict on markets in Syria and guide the implementation of humanitarian cash and voucher programmes within those markets. REACH and the CWG have been partners on the Syria Market Monitoring Exercise since early 2015.

About REACH's COVID-19 response

As an initiative deployed in many vulnerable and crisis-affected countries, REACH is deeply concerned by the devastating impact the COVID-19 pandemic may have on the millions of affected people we seek to serve. REACH is currently working with Cash Working Groups and partners to scale up its programming in response to this pandemic, with the goal of identifying practical ways to inform humanitarian responses in the countries where we operate. COVID-19-relevant market monitoring and market assessments are a key area where REACH aims to leverage its existing expertise to help humanitarian actors understand the impact of changing restrictions on markets and trade. Updates regarding REACH's response to COVID-19 can be found in a [devoted thread](#) on the REACH website. Contact geneva@impact-initiatives.org for further information.