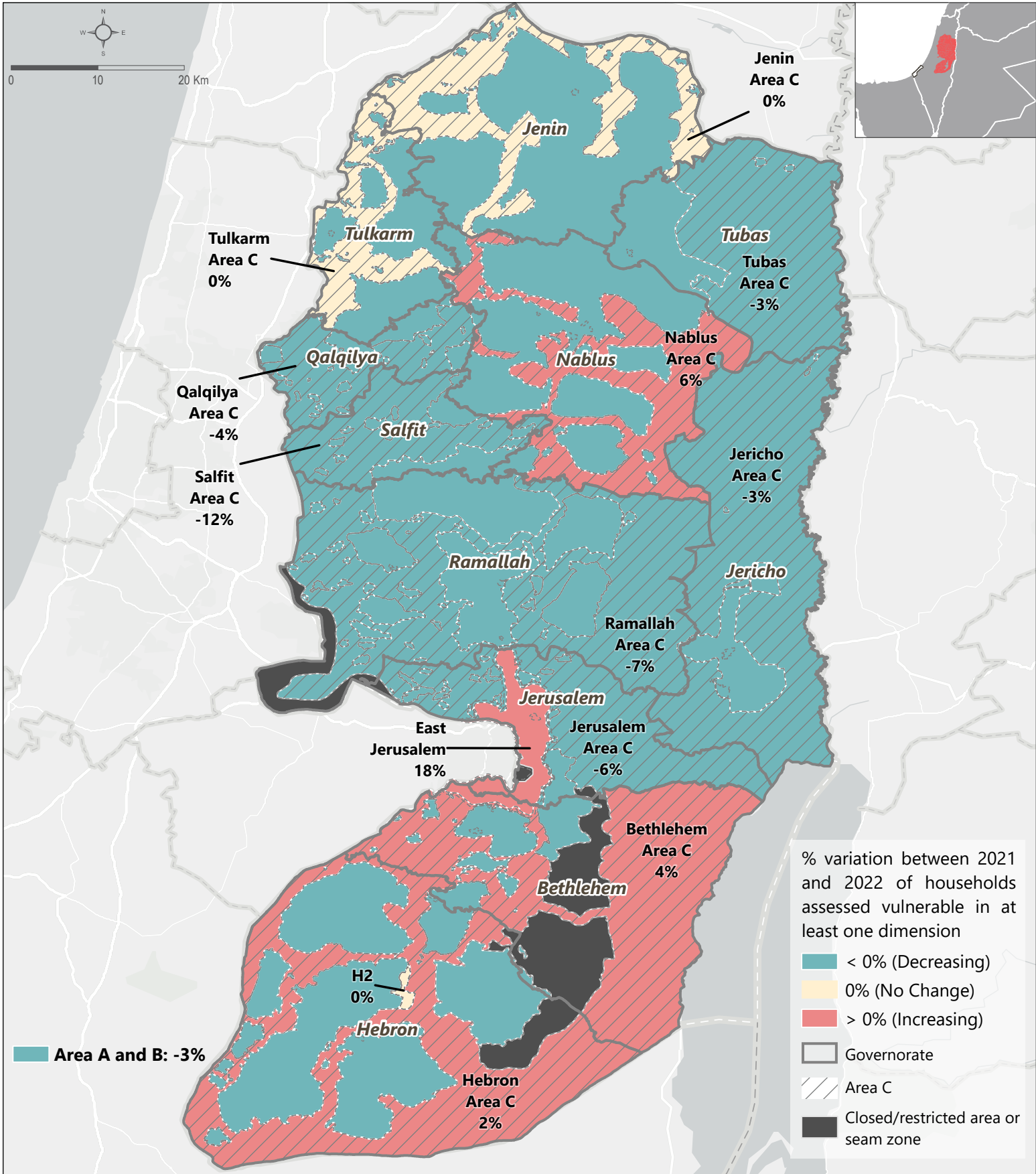


OCCUPIED PALESTINIAN TERRITORY: WEST BANK

Comparability of vulnerabilities between 2021 and 2022 by areas

For humanitarian and development purposes only
Production date: March 2023



* Limitation in comparability: In 2021, in-camp refugees were categorized into a distinct stratum and not included in the aggregation at HNO areas level, whereas, in 2022, in-camp households were directly incorporated into their corresponding geographic stratum (within Area A/B or H2) with out-camp households. Furthermore, the precision of the sampling has been increased between 2021 and 2022 for Area A/B, resulting in a considerably increased sample size (210 households interviewed in 2021 for Area A/B compared to 1855 in 2022).

Data sources:
 • Vulnerabilities: REACH MSNA 2022 and 2021
 • Administrative boundaries: OCHA
 • Background: ESRI

Note: Data, designations and boundaries contained on this map are not warranted to be error-free and do not imply acceptance by REACH partners, associates or donors mentioned on this map.

Funded by

