

# SYRIA MARKET MONITORING EXERCISE

Snapshot: 7 - 15 October 2019

Cash-Based Responses  
Technical Working Group

**REACH** Informing  
more effective  
humanitarian action

## INTRODUCTION

To inform humanitarian cash programming, REACH, in partnership with the Cash-Based Responses Technical Working Group (CBR-TWG), conducts monthly market monitoring exercises throughout Syria to assess the availability and prices of 36 basic commodities that are typically sold in markets and consumed by average Syrian households, including food and non-food items, water, fuel, and cellphone data.

Of these, 18 items comprise the Survival Minimum Expenditure Basket (SMEB; see below), which represents the minimum, culturally adjusted items required to support a 6-person household for a month.

Data was collected this month (between 7-15 October) by ACTED, CARE Shafak, Concern, GOAL, IRC, Mercy Corps, People in Need, REACH, SARD, Solidarités International, STC Shafak, Violet, and Watan.

The accompanying [dataset from the month of October](#) is disseminated monthly and is distributed through partners across the humanitarian community.

## SURVIVAL MINIMUM EXPENDITURE BASKET (SMEB) CONTENTS

	Item	Quantity	
Food Items	Bread	37 kg	
	Bulgur	15 kg	
	Chicken	6 kg	
	Eggs	6 kg	
	Fresh vegetables	12 kg	
	Ghee/vegetable oil	7 kg/L	
	Red lentils	15 kg	
	Rice	19 kg	
	Salt	1 kg	
	Sugar	5 kg	
	Tomato paste	6 kg	
	Hygiene items	Bathing soap	12 bars
		Laundry/dish soap	3 kg
		Sanitary pads	4 packs of 10
Toothpaste		200 g	
Fuel	Cooking fuel*	25 L	
Water	Water trucking	4500 L	
Telecom	Smartphone data	1 GB	
Other	Float (other costs)**	7.5% total value	

\* Kerosene in northern Syria

\*\* Float only applied to observations where prices of all SMEB contents could be collected

## KEY DEVELOPMENTS

### Cost of SMEB remains stable

In October, the cost of the SMEB remained steady in the northwest at 67,617 SYP and 106 USD.

### Rapid Market Monitoring conducted on 21 October

Data collection for this round of Market Monitoring took place from the 7-15 October, concurrently with the escalation of conflict in northeast Syria. REACH conducted a Rapid Market Monitoring Exercise on 21 October in 12 major markets, in the communities of Afrin, Al Bab, Atareb, Azaz, Dana, Daret Azza, Ghadorah, Idlib, Jandairis, Jarablus, Maasaran, and Sarmada, to better understand the impact of conflict eruption on the prices of SMEB items, water and fuel. Key findings included an increase in prices or unavailability of various fuel items, an increase in the price of water trucking and further depreciation of the Syrian Pound against the US Dollar. [Full factsheet can be found here.](#)

### Winterization items available

Winter items (blankets, clothing items, carpets, plastic sheets and jerry cans) are available in most markets in northwest Syria. However, prices are reportedly high due to the depreciation of the Syrian Pound against foreign currencies, as most of these items are imported, coupled with higher transportation costs and increase in fuel prices. [Full list of prices of winterization items is available here.](#)

### Kerosene and diesel heaters

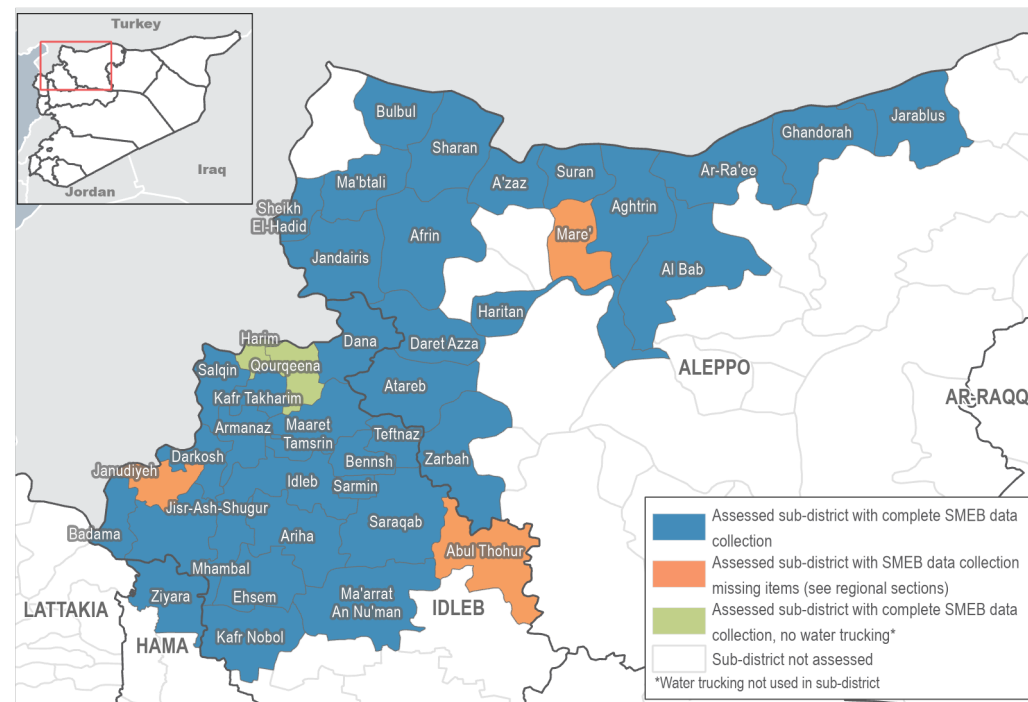
As one of the winterization items monitored by the Market Monitoring Exercise, kerosene or diesel heaters—depending on market provision—are currently decreasing in price across the northwest region. This is reportedly due to lower demand, as people prefer other types of heaters running on firewood, gasoline or olive

heating residue, which require cheaper fuel and are more commonly available.

### Loss of coverage in October

Due to recent developments in northeast Syria, REACH and partners have currently lost coverage in the region.

## ASSESSED AREAS AND COVERAGE

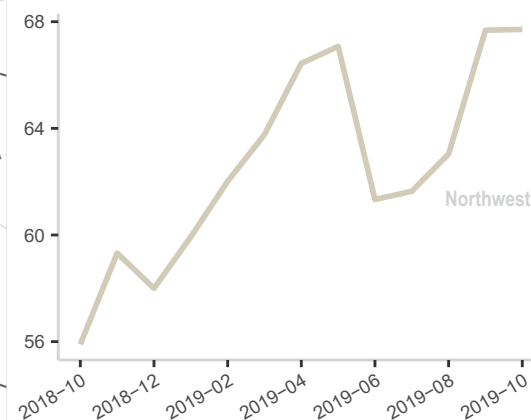


## MEDIAN SMEB COST IN SYP (USD), BY REGION

67,711 SYP (106 USD) | NORTHWEST SYRIA - NORTHERN HAMA, IDLEB, WESTERN & NORTHERN ALEPPO

## MEDIAN SMEB COSTS, BY MONTH & REGION

Thousand Syrian Pounds



## KEY DEVELOPMENTS

67,711 SYP  
(106 USD)

### NORTHWEST SYRIA - NORTHERN HAMA, IDLEB, WESTERN & NORTHERN ALEPPO GOVERNORATES

#### Bread prices increase due to conflict escalation

Prices of bread increased by 8% in October from 165 to 178 SYP per 8 pcs. Overall, prices monitored in the latter days of data collection were higher than in the first days of data collection. The price increase is reportedly due to the escalation of conflict in the northeast, a region known as the “breadbasket of Syria”. Increased hostilities are leading markets in the northwest to rely more on flour from Turkey which, due to high costs of transportation and fuel, is driving up the prices.

#### Cost of transport fuel increasing in some sub-districts

The transport fuel component of the SMEB has increased by 20% or more in the sub-districts of Al Bab, Jandairis, Mare', Jarablus and Darkosh. It was reported that much of the fuel used to be transported from northeast Syria but fuel items are currently not

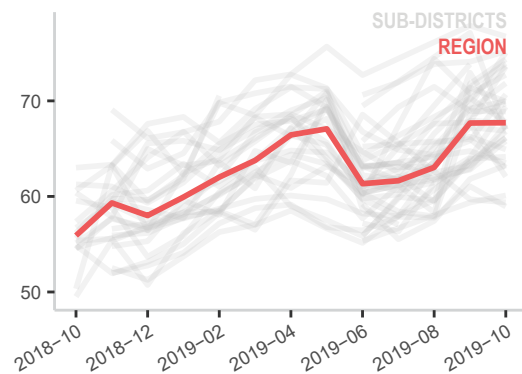
widely available because of the escalation of conflict. Conversely, some vendors have increased the price of storage of fuel, which is further driving up the price.

#### Regional price of cellphone data remain stable, though large variations exist between sub-districts

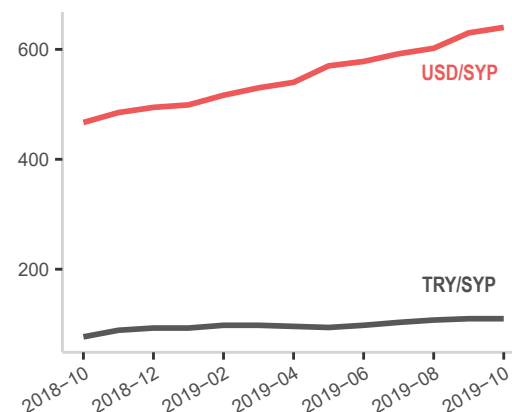
Whereas the regional median price of 1GB data remained stable at 494 SYP, the median price decreased by more than 15% in the sub-districts of Ar-Ra'ee, Afrin, Ehsem, A'zaz, Aghtrin and Ma'arrat An Nu'man. The decrease is reportedly due to more competitive prices by providers in the northwest. Contrarily, the sub-districts of Bulbul, Sharan, Sheikh El-Hadid, Armanaz, Mare', Idleb and Saraqab witnessed an increase in the price of 1GB data by more than 15% in the last month, due to fewer offers coupled with further depreciation of the Syrian Pound.

### MEDIAN SMEB COSTS, BY MONTH

Thousand Syrian Pounds



### EXCHANGE RATES, BY MONTH & CURRENCY



### MEDIAN SMEB COSTS & CHANGES\*

Syrian Pounds

Sub-district	SMEB	One month change	Six month change
Northwest Syria	67,617	1%	1%
Abul Thohur	NA	NA	NA
Afrin	67,024	-13%	NA
Aghtrin	62,486	-8%	NA
Al Bab	65,803	5%	1%
Ariha	65,373	-1%	5%
Armanaz	71,748	6%	2%
Ar-Ra'ee	66,807	5%	18%
Atareb	70,430	2%	10%
A'zaz	72,723	3%	2%
Badama	66,842	NA	NA
Bennsh	67,688	0%	-1%
Bulbul	60,101	1%	NA
Dana	66,341	4%	-5%
Daret Azza	74,272	6%	4%
Darkosh	69,359	NA	11%
Ehsem	69,350	0%	-2%
Ghadorah	59,382	-1%	-3%
Harim*	NA	NA	NA
Haritan	67,546	7%	NA

\* For price and change calculations, only the communities within a sub-district with consistent coverage across months are included.

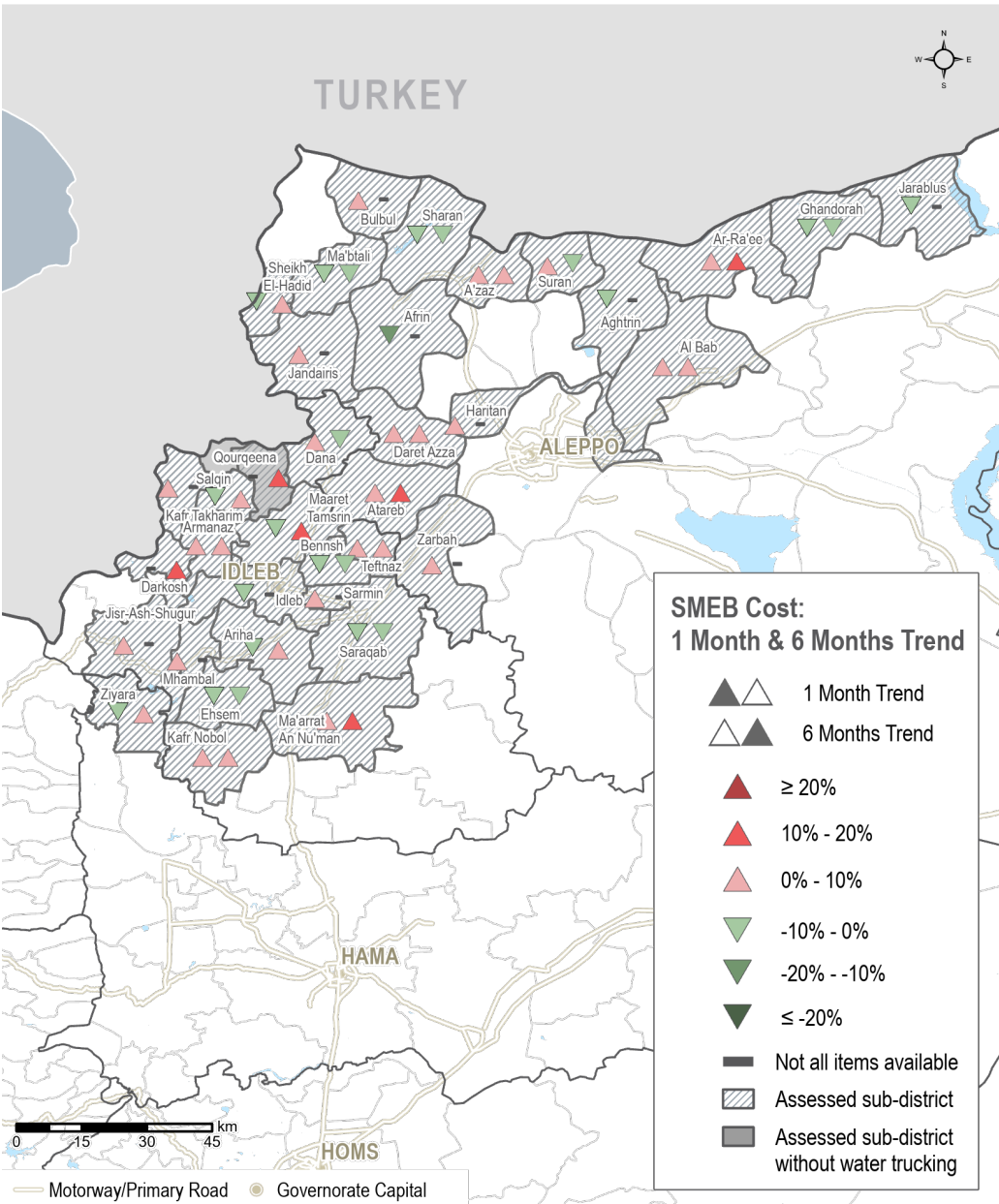
Sub-district	SMEB	One month change	Six month change
Idleb	68,693	0%	NA
Jandairis	68,715	4%	NA
Janudiyeh	NA	NA	NA
Jarablus	63,011	-5%	NA
Jisr-Ash-Shugur	66,384	3%	NA
Kafr Nobol	73,170	2%	4%
Kafr Takharim	69,919	-2%	1%
Maaret Tamsrin	63,836	0%	11%
Ma'arrat An Nu'man	73,947	4%	14%
Ma'bтали	67,771	-4%	-5%
Mare'	NA	NA	NA
Mhambal	75,802	2%	NA
Qourqeena*	NA	NA	NA
Salqin	75,429	10%	NA
Saraqab	66,167	0%	-1%
Sarmin	73,682	5%	NA
Sharan	63,491	-2%	-8%
Sheikh El-Hadid	76,729	-1%	1%
Suran	66,249	1%	-4%
Teftnaz	69,347	5%	7%
Zarbah	63,248	2%	NA
Ziyara	58,948	-3%	4%

#### SUB-DISTRICTS WITH INCOMPLETE SMEB IN OCTOBER

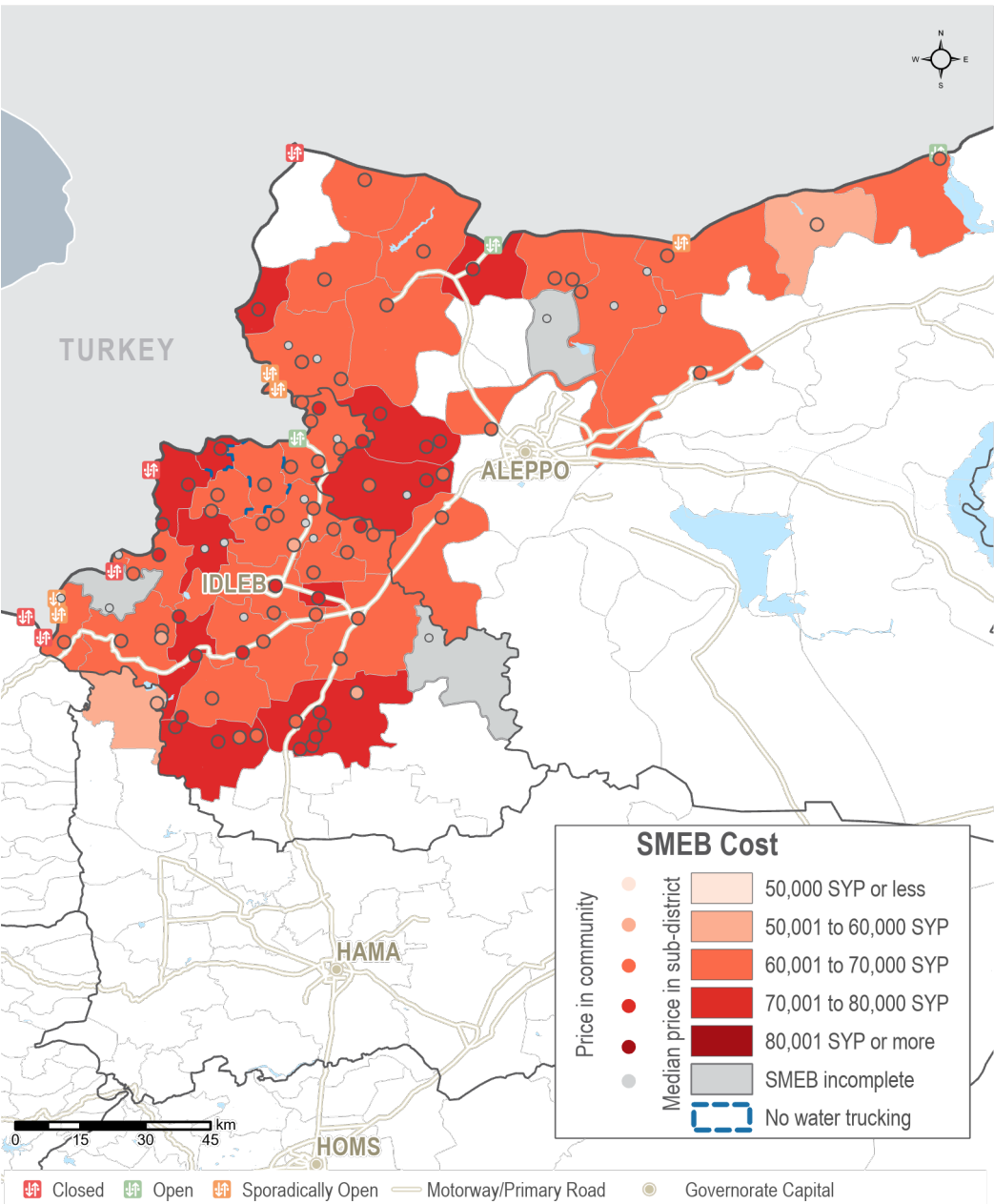
SUB-DISTRICT	MISSING ITEMS
Abul Thohur	Data, fuel items
Janudiyeh	Milk, tomato paste, toothpaste, green peas, milk powder & baby formula
Mare'	Baby formula, toothpaste & canned fish

Note: Lack of data for a SMEB item does not necessarily imply a shortage.

## SMEB COST: ONE MONTH & SIX MONTHS TREND



## SMEB COST RANGES (SYP), BY SUB-DISTRICTS & COMMUNITIES





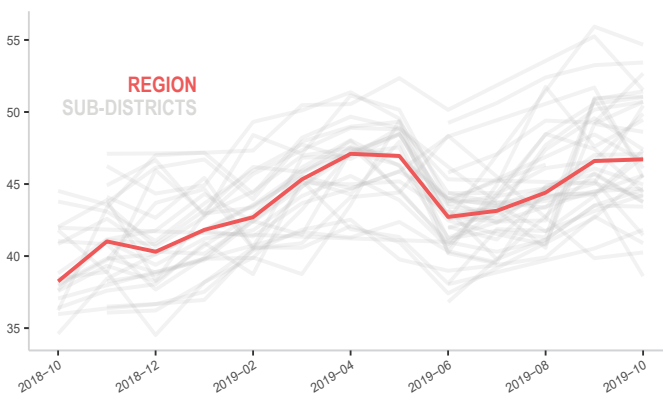
## MEDIAN SMEB COST: FOOD ITEMS

See Page 1, Syrian Pounds

Sub-district	SMEB Food	One month change	Six month change	Sub-district	SMEB Food	One month change	Six month change
Northwest Syria	46,270	5%	-2%	Idleb	44,375	-6%	NA
Abul Thohur	38,610	-13%	NA	Jandairis	49,300	9%	NA
Afrin	45,468	-12%	-1%	Janudiyeh	NA	NA	NA
Aghtrin	44,206	-3%	NA	Jarablus	44,127	-2%	-10%
Al Bab	44,685	0%	-4%	Jisr-Ash-Shugur	43,315	-2%	NA
Ariha	46,646	1%	6%	Kafr Nobol	50,554	-1%	3%
Armanaz	50,700	6%	3%	Kafr Takharim	47,400	-4%	-3%
Ar-Ra'ee	45,610	7%	11%	Maaret Tamsrin	44,260	2%	7%
Atareb	50,825	3%	14%	Ma'arrat An Nu'man	51,475	1%	14%
A'zaz	49,454	4%	4%	Ma'btali	46,593	-4%	-7%
Badama	45,270	NA	NA	Mare'	54,675	-2%	NA
Bennsh	47,086	0%	-3%	Mhambal	53,898	1%	NA
Bulbul	41,820	3%	NA	Qourqeena	43,736	-4%	3%
Dana	45,708	2%	-7%	Salqin	54,079	9%	NA
Daret Azza	49,225	5%	1%	Saraqab	45,327	-2%	-3%
Darkosh	47,850	NA	6%	Sarmin	51,033	1%	NA
Ehsem	47,636	0%	-2%	Sharan	41,448	-8%	-14%
Ghandorah	40,252	1%	-9%	Sheikh El-Hadid	51,525	-7%	-2%
Harim	49,515	NA	NA	Suran	45,156	-2%	-9%
Haritan	47,336	7%	NA	Teftnaz	48,379	3%	6%
				Zarbah	44,613	3%	NA
				Ziyara	40,896	-4%	3%

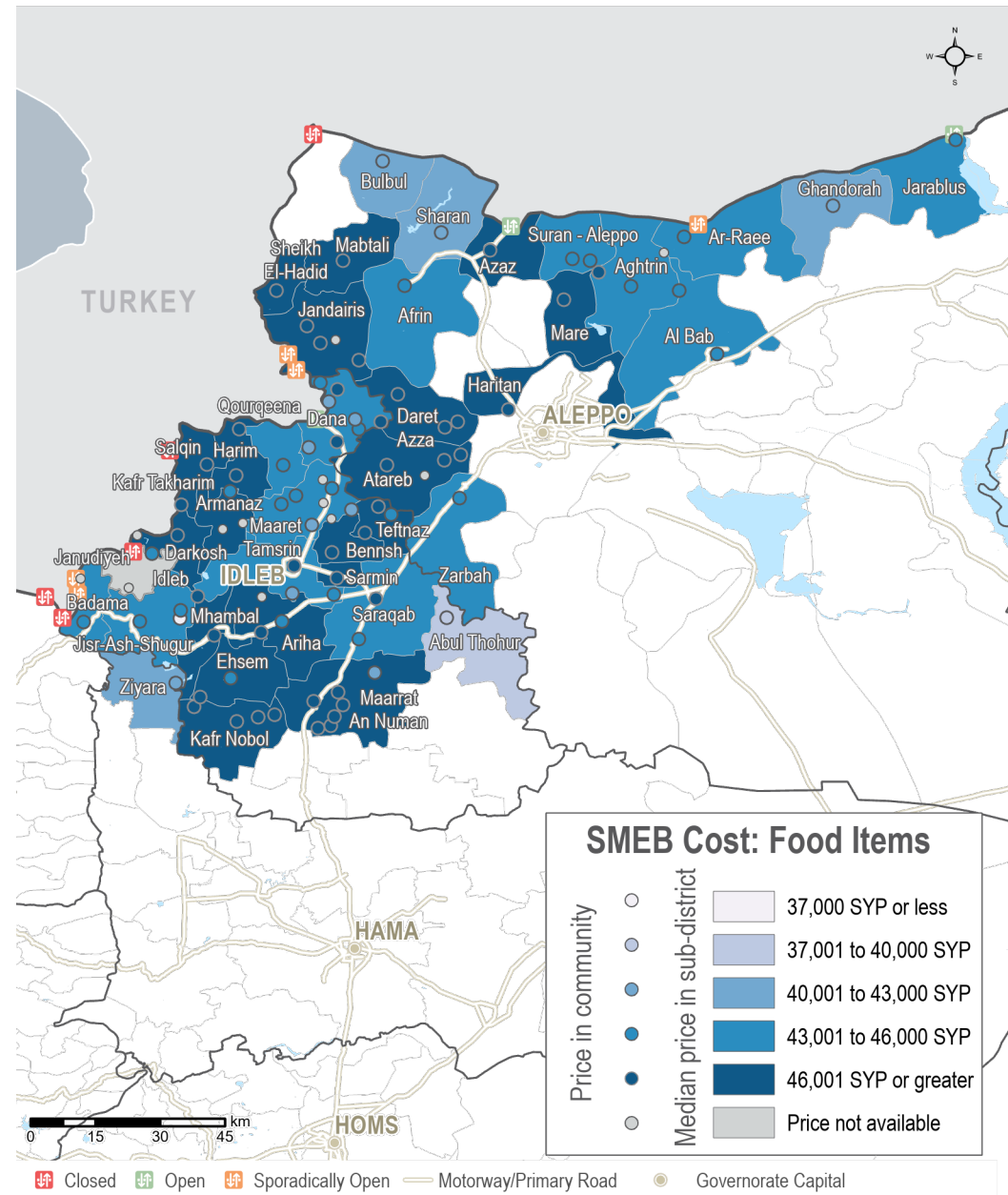
## MEDIAN SMEB COST: FOOD ITEMS, BY MONTH

Region (red) and Sub-districts (grey), Thousand Syrian Pounds



## SMEB FOOD ITEMS' COST

Sub-districts & Communities, Syrian Pounds



# NORTHWEST SYRIA - SMEB COOKING FUEL

Northern Hama, Idleb, Western & Northern Aleppo governorates

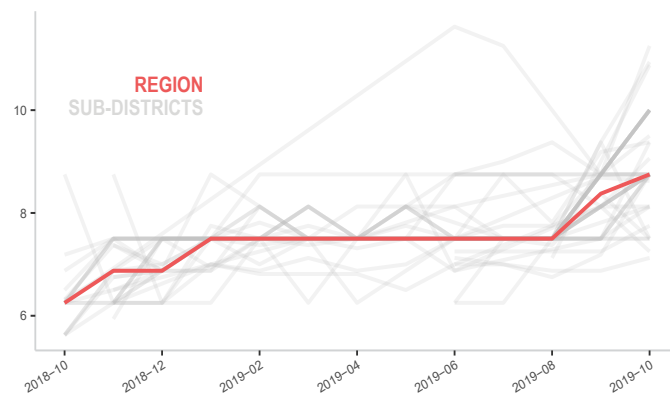
## MEDIAN SMEB COOKING FUEL PRICE

Kerosene 25L, Syrian Pounds

Sub-district	SMEB Cooking Fuel	One month change	Six month change	Sub-district	SMEB Cooking Fuel	One month change	Six month change
Northwest Syria	8,375	12%	12%	Idleb	11,250	29%	NA
Abul Thohur	7,500	-20%	NA	Jandairis	8,125	8%	NA
Afrin	8,750	8%	0%	Janudiyeh	8,125	NA	8%
Aghttrin	7,500	0%	NA	Jarablus	7,500	0%	9%
Al Bab	9,375	25%	25%	Jisr-Ash-Shugur	10,625	16%	NA
Ariha	8,438	-4%	4%	Kafr Nobol	9,375	7%	25%
Armanaz	8,750	8%	17%	Kafr Takharim	9,063	12%	21%
Ar-Ra'ee	8,625	-1%	23%	Maaret Tamsrin	7,500	-10%	0%
Atareb	8,750	10%	18%	Ma'arrat An Nu'man	10,000	14%	23%
A'zaz	8,750	8%	8%	Ma'btali	8,750	0%	0%
Badama	8,000	-2%	NA	Mare'	7,750	7%	NA
Bennsh	9,375	2%	21%	Mhambal	8,750	0%	NA
Bulbul	7,250	-11%	NA	Qourqeena	10,000	14%	33%
Dana	8,750	17%	8%	Salqin	8,750	22%	NA
Daret Azza	10,000	14%	23%	Saraqab	9,188	13%	23%
Darkosh	10,000	14%	33%	Sarmin	9,500	9%	NA
Ehsem	10,000	10%	33%	Sharan	10,000	14%	23%
Ghandorah	8,125	8%	8%	Sheikh El-Hadid	10,000	14%	23%
Harim	10,875	NA	NA	Suran	8,438	13%	13%
Haritan	8,750	8%	NA	Teftnaz	10,000	14%	33%
				Zarbah	8,750	0%	NA
				Ziyara	7,125	4%	10%

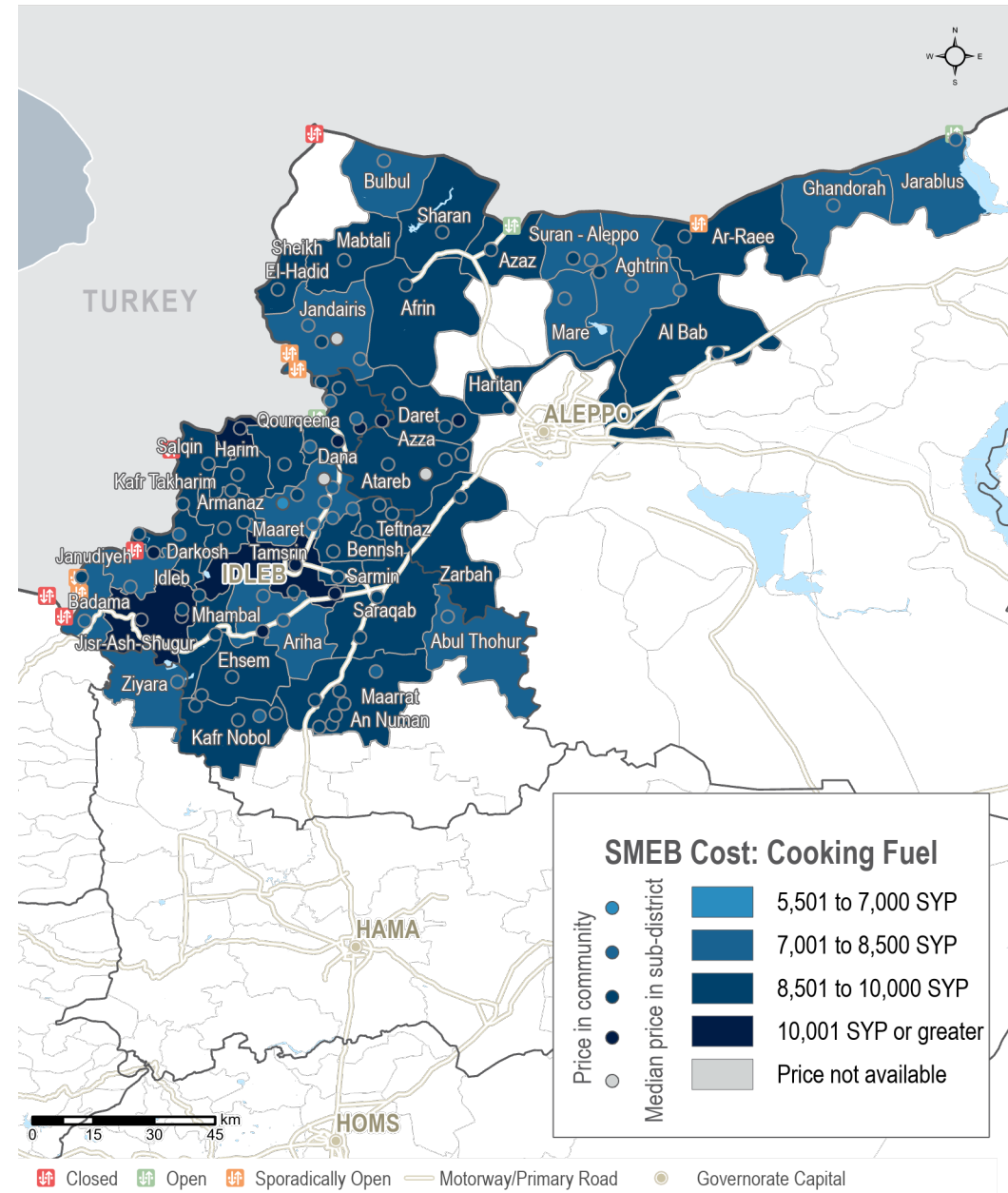
## MEDIAN SMEB COOKING FUEL COSTS, BY MONTH

Region (red) and Sub-districts (grey), Thousand Syrian Pounds



## SMEB COOKING FUEL COST

Sub-districts & Communities, Syrian Pounds



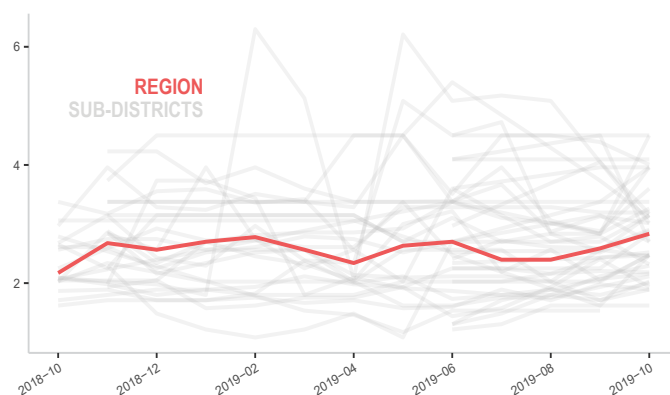
## MEDIAN SMEB WATER TRUCKING PRICE

4,500L, Syrian Pounds

Sub-district	SMEB Water Truck	One month change	Six month change	Sub-district	SMEB Water Truck	One month change	Six month change
Northwest Syria	2,655	4%	2%	Idleb	3,150	11%	NA
Abul Thohur	1,620	0%	NA	Jandairis	2,700	-40%	NA
Afrin	3,105	-17%	-31%	Janudiyeh	2,115	NA	31%
Aghtrin	2,813	-31%	NA	Jarablus	4,095	0%	NA
Al Bab	3,960	17%	17%	Jisr-Ash-Shugur	2,880	14%	NA
Ariha	1,935	-16%	0%	Kafr Nobol	3,960	40%	-22%
Armanaz	2,295	13%	-24%	Kafr Takharim	3,015	-4%	-11%
Ar-Ra'ee	3,375	0%	213%	Maaret Tamsrin	2,498	-4%	19%
Atareb	2,216	-16%	37%	Ma'arrat An Nu'man	3,150	24%	17%
A'zaz	4,005	-9%	-11%	Ma'btali	2,700	-14%	0%
Badama	3,600	-20%	NA	Mare'	2,475	22%	NA
Bennsh	2,003	11%	-5%	Mhambal	3,263	21%	NA
Bulbul	2,475	2%	NA	Qourqeena	NA	NA	NA
Dana	2,520	2%	24%	Salqin	2,835	7%	NA
Daret Azza	2,228	-1%	16%	Saraqab	2,273	-19%	-10%
Darkosh	2,250	32%	-12%	Sarmin	1,890	11%	NA
Ehsem	3,285	-4%	-47%	Sharan	2,475	53%	-27%
Ghandorah	3,960	0%	96%	Sheikh El-Hadid	4,500	59%	0%
Harim	NA	NA	NA	Suran	3,116	8%	7%
Haritan	2,835	26%	NA	Teftnaz	2,093	-3%	6%
				Zarbah	2,160	4%	NA
				Ziyara	3,195	0%	-3%

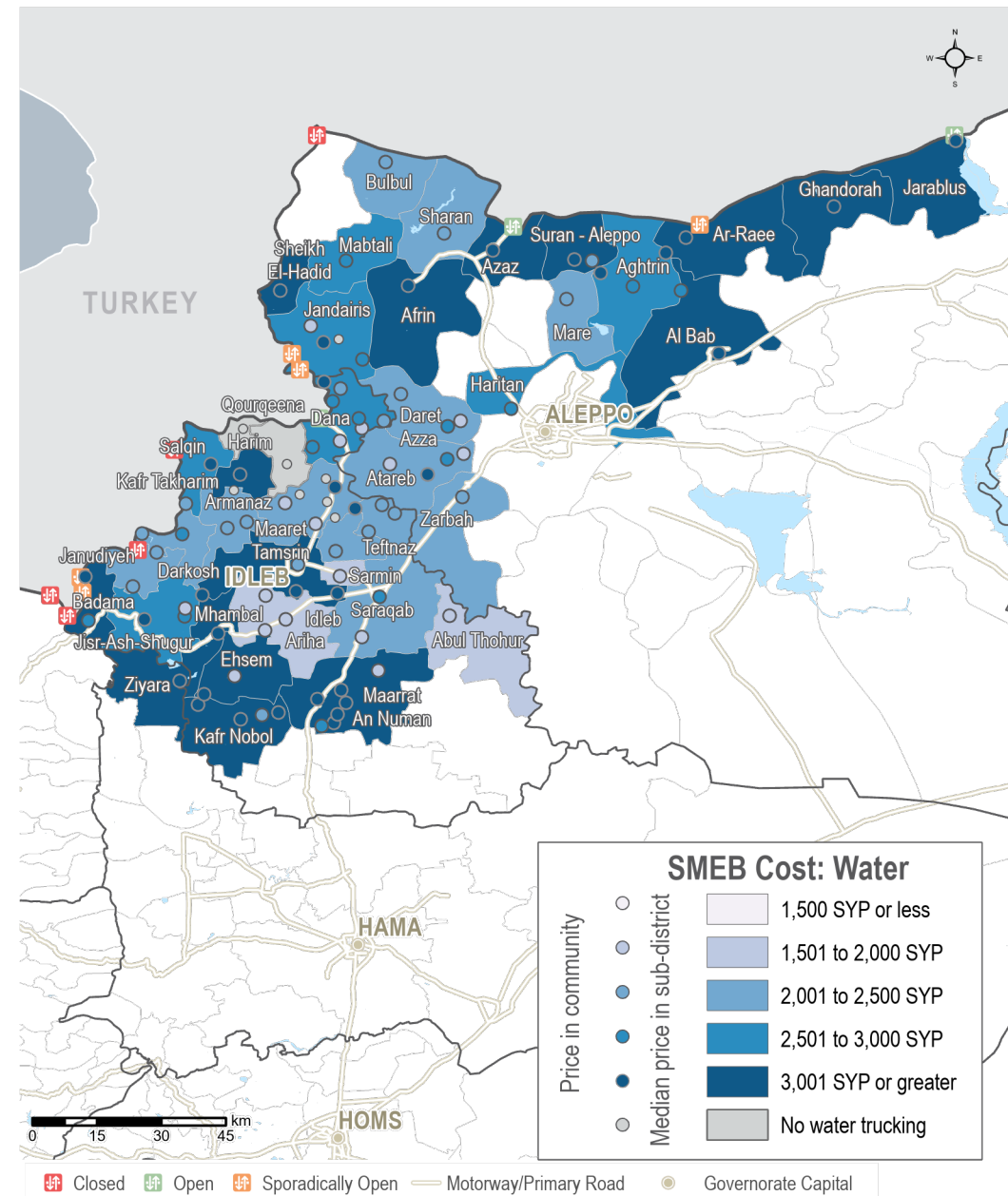
## MEDIAN SMEB WATER TRUCKING COSTS, BY MONTH

Thousand Syrian Pounds



## SMEB WATER TRUCKING COST

Sub-districts & Communities, Syrian Pounds



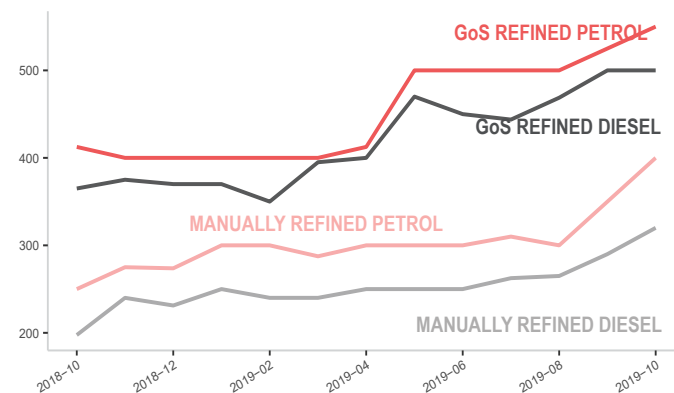
## MEDIAN TRANSPORT FUEL PRICE

Diesel and Petrol, 1L (Government of Syria and Manually Refined), Syrian Pounds

Sub-district	SMEB Trans Fuel	One month change	Six month change	Sub-district	SMEB Trans Fuel	One month change	Six month change
Northwest Syria	388	3%	15%	Idleb	467	10%	NA
Abul Thohur	300	-10%	NA	Jandairis	480	28%	NA
Afrin	371	3%	-4%	Janudiyeh	425	NA	70%
Aghtrin	288	0%	NA	Jarablus	367	17%	8%
Al Bab	365	24%	-3%	Jisr-Ash-Shugur	452	-1%	NA
Ariha	415	-5%	15%	Kafr Nobol	451	6%	21%
Armanaz	392	13%	2%	Kafr Takharim	430	3%	19%
Ar-Ra'ee	288	-14%	-4%	Maaret Tamsrin	406	5%	6%
Atareb	429	-4%	15%	Ma'arrat An Nu'man	469	10%	28%
A'zaz	406	1%	10%	Ma'btali	400	3%	7%
Badama	374	-4%	NA	Mare'	500	29%	NA
Bennsh	437	3%	12%	Mhambal	348	9%	NA
Bulbul	379	4%	NA	Qourqeena	410	-4%	9%
Dana	394	5%	7%	Salqin	388	8%	NA
Daret Azza	394	-7%	-5%	Saraqab	463	4%	19%
Darkosh	459	19%	67%	Sarmin	380	-8%	NA
Ehsem	459	17%	24%	Sharan	454	3%	33%
Ghandorah	350	8%	-7%	Sheikh El-Hadid	450	16%	17%
Harim	428	NA	NA	Suran	422	-1%	19%
Haritan	325	6%	NA	Teftnaz	466	9%	25%
				Zarbah	400	-2%	NA
				Ziyara	308	3%	11%

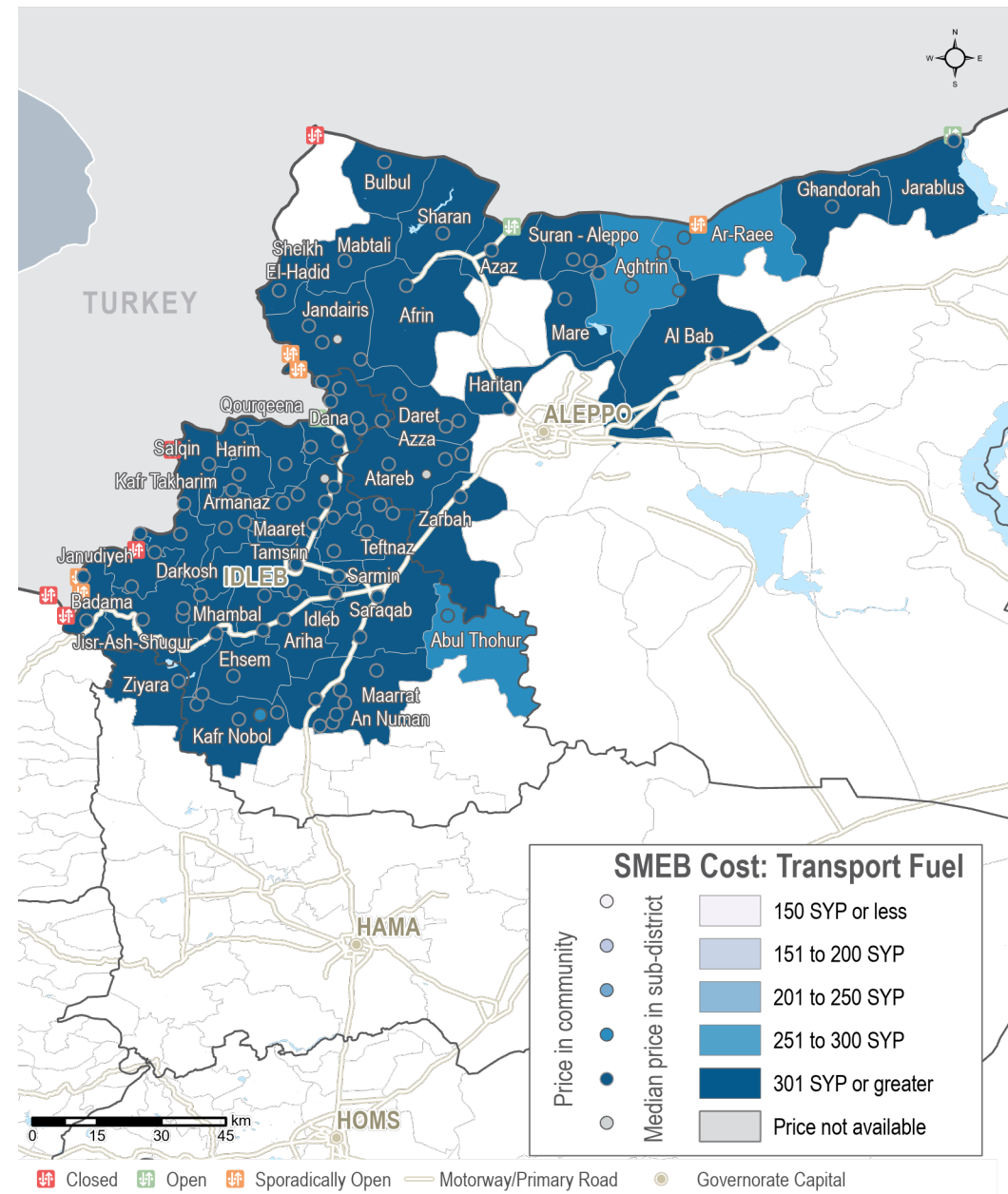
## MEDIAN TRANSPORT FUEL COSTS, BY MONTH & TYPE

Syrian Pounds



## TRANSPORT FUEL COST

Sub-districts & Communities, Syrian Pounds





# NORTHWEST SYRIA - CELLPHONE DATA

Northern Hama, Idleb, Western & Northern Aleppo governorates

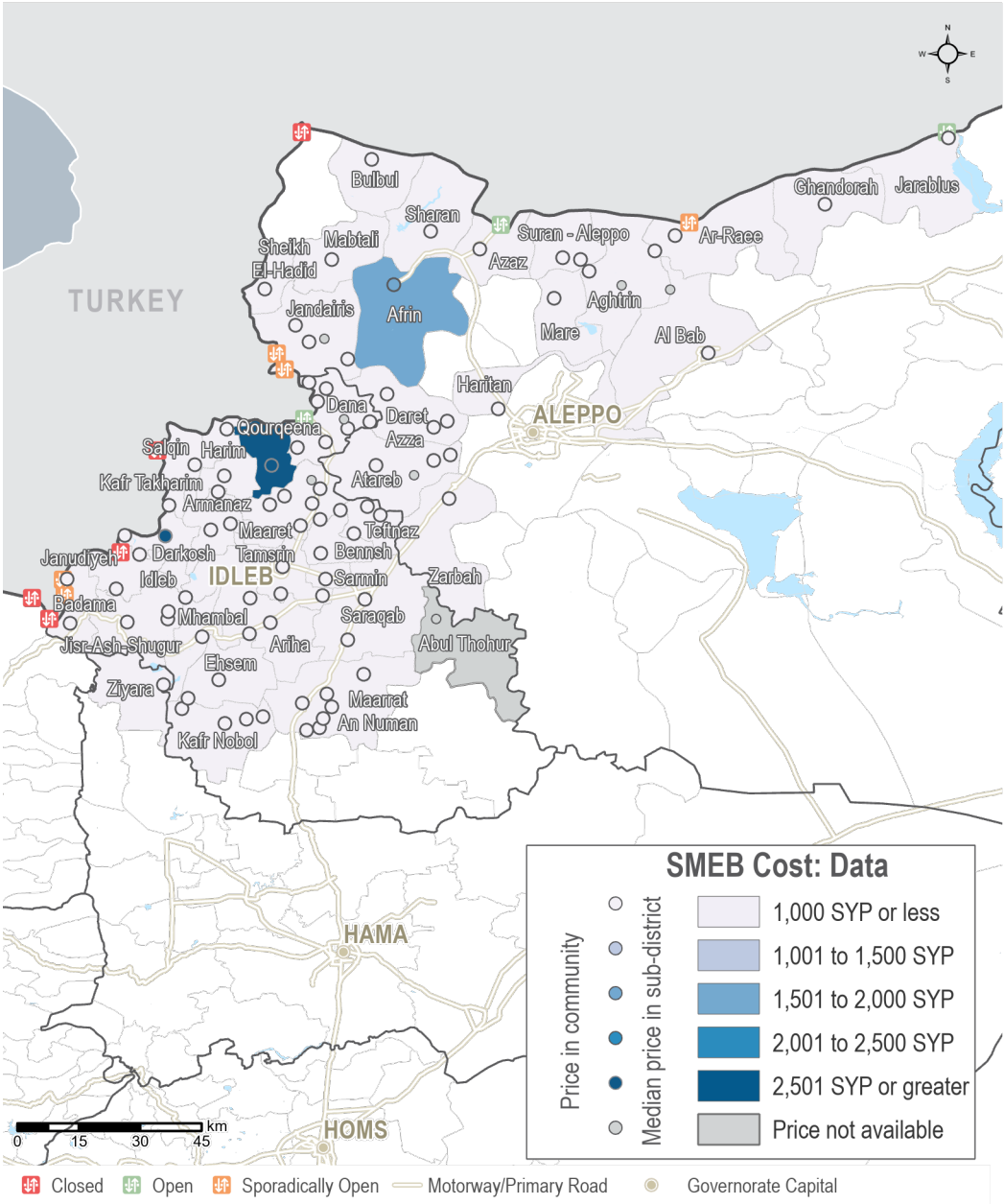
## MEDIAN SMEB CELLPHONE DATA PRICE

1GB data, Syrian Pounds

Sub-district	SMEB Data (1GB)	One month change	Six month change	Sub-district	SMEB Data (1GB)	One month change	Six month change
Northwest Syria	481	20%	-4%	Idleb	500	67%	NA
Abul Thohur	NA	NA	NA	Jandairis	200	0%	NA
Afrin	1,600	-18%	300%	Janudiyeh	400	NA	33%
Aghtrin	500	-17%	NA	Jarablus	500	0%	25%
Al Bab	500	0%	-17%	Jisr-Ash-Shugur	500	4%	NA
Ariha	350	-7%	-13%	Kafr Nobol	450	-10%	13%
Armanaz	400	33%	33%	Kafr Takharim	550	10%	16%
Ar-Ra'ee	500	-38%	-29%	Maaret Tamsrin	500	0%	0%
Atareb	300	-4%	-17%	Ma'arrat An Nu'man	425	-15%	6%
A'zaz	500	-23%	-38%	Ma'btali	700	17%	8%
Badama	363	-9%	NA	Mare'	150	50%	NA
Bennsh	475	-5%	-5%	Mhambal	313	0%	NA
Bulbul	350	17%	NA	Qourqeena	3,000	650%	500%
Dana	313	4%	-38%	Salqin	450	13%	NA
Daret Azza	400	0%	14%	Saraqab	450	29%	-10%
Darkosh	500	0%	167%	Sarmin	500	0%	NA
Ehsem	375	-17%	-6%	Sharan	525	17%	-5%
Ghandorah	500	0%	0%	Sheikh El-Hadid	1,000	100%	100%
Harim	250	NA	NA	Suran	488	3%	15%
Haritan	500	0%	NA	Teftnaz	500	0%	0%
				Zarbah	400	14%	NA
				Ziyara	500	0%	0%

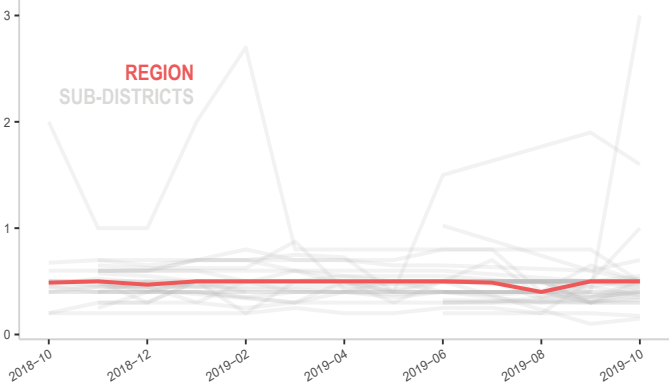
## SMEB CELLPHONE DATA COST

Sub-districts & Communities, Syrian Pounds



## MEDIAN SMEB CELLPHONE DATA COST, BY MONTH

Thousand Syrian Pounds





# NORTHWEST SYRIA - SMEB HYGIENE ITEMS

Northern Hama, Idleb, Western & Northern Aleppo governorates

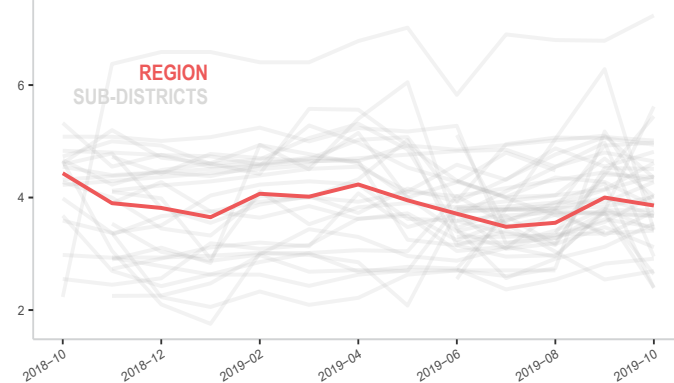
## MEDIAN SMEB HYGIENE ITEMS' PRICE

12 bars of soap, 4 packs of 10 sanitary pads, 3kg of laundry/dish soap, 200g of toothpaste, Syrian Pounds

Sub-district	SMEB Hygiene Items	One month change	Six month change	Sub-district	SMEB Hygiene Items	One month change	Six month change
Northwest Syria	4,075	8%	-8%	Idleb	4,625	-4%	NA
Abul Thohur	3,478	-4%	NA	Jandairis	3,596	-10%	NA
Afrin	3,426	-45%	NA	Janudiyeh	NA	NA	NA
Aghttrin	3,108	-38%	NA	Jarablus	2,393	-44%	-36%
Al Bab	2,693	6%	-12%	Jisr-Ash-Shugur	4,433	33%	NA
Ariha	3,444	-15%	-1%	Kafr Nobol	3,726	0%	15%
Armanaz	4,597	-1%	-9%	Kafr Takharim	5,013	-1%	21%
Ar-Ra'ee	4,036	13%	36%	Maaret Tamsrin	4,625	1%	122%
Atareb	3,425	-13%	-34%	Ma'arrat An Nu'man	3,738	-1%	-1%
A'zaz	4,940	-2%	-3%	Ma'btali	4,300	-3%	5%
Badama	4,947	NA	NA	Mare'	NA	NA	NA
Bennsh	4,027	-14%	-11%	Mhambal	4,291	10%	NA
Bulbul	4,013	5%	NA	Qourqeena	3,325	NA	-17%
Dana	4,423	1%	-20%	Salqin	4,053	2%	NA
Daret Azza	7,238	4%	3%	Saraqab	4,314	1%	-12%
Darkosh	3,920	-24%	47%	Sarmin	5,618	49%	NA
Ehsem	3,215	-22%	-1%	Sharan	4,614	11%	18%
Ghandorah	2,402	-35%	-11%	Sheikh El-Hadid	4,351	-15%	-12%
Harim	5,444	NA	NA	Suran	4,430	7%	8%
Haritan	3,413	1%	NA	Teftnaz	3,538	13%	-28%
				Zarbah	2,913	3%	NA
				Ziyara	3,119	-10%	13%

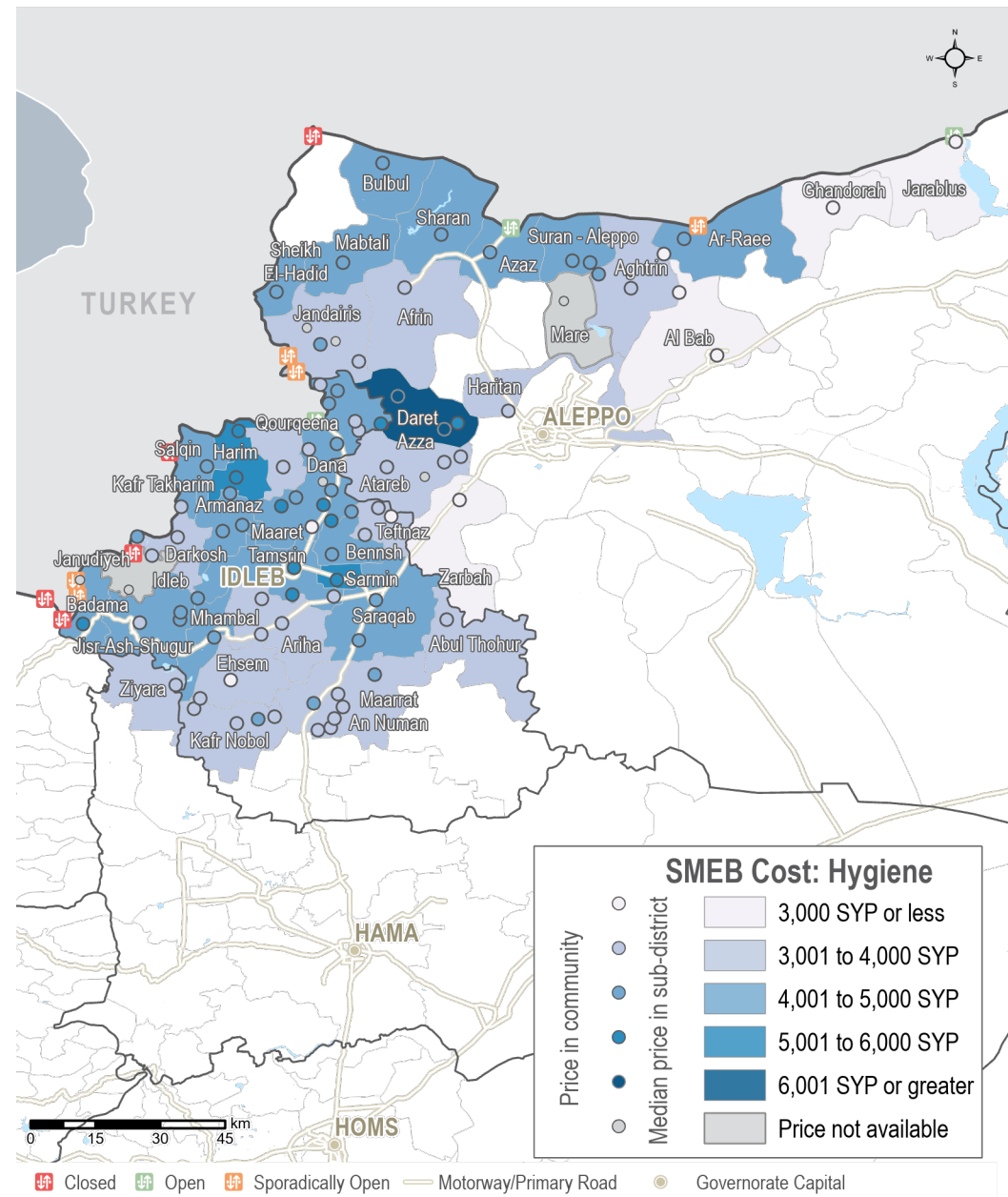
## MEDIAN SMEB HYGIENE ITEMS' COSTS, BY MONTH

Thousand Syrian Pounds



## SMEB HYGIENE ITEMS' COST

Sub-districts & Communities, Syrian Pounds



## MEDIAN WINTERISATION ITEMS

Per 1 piece, Syrian Pounds

Sub-district	Jerry cans	Plastic sheets	Winter carpets	Kerosene/diesel heaters	Winter blanket	Mattress	Men's winter jacket	Women's winter jacket	Children's winter jacket	Men's winter boots	Women's winter boots	Children's winter boots	Adult hat	Children's hat
Northwest Syria	900	3,513	11,875	9,750	1,900	3,750	5,000	6,750	4,000	3,000	3,500	2,300	500	500
Abul Thohur	NA	NA	NA	NA	NA	NA	NA	NA	NA	NA	NA	NA	NA	NA
Afrin	1,000	5,000	17,500	20,000	4,500	4,500	NA	NA	NA	NA	NA	NA	NA	NA
Aghtrin	950	5,250	15,000	6,500	2,500	2,500	9,000	NA	6,500	1,350	1,100	650	1,000	600
Al Bab	1,150	3,500	15,000	7,000	2,500	2,500	7,500	NA	4,500	NA	NA	NA	800	600
Ariha	1,000	3,000	5,000	10,000	1,850	2,750	6,500	8,500	4,500	4,000	3,500	3,000	900	600
Armanaz	900	3,000	15,000	6,250	1,750	3,725	12,000	9,000	3,500	3,750	3,250	2,500	750	500
Ar-Ra'ee	NA	4,500	NA	NA	3,250	4,750	NA	NA	NA	NA	NA	NA	NA	NA
Atareb	1,000	4,000	25,500	14,000	3,000	3,000	4,500	5,000	4,000	3,000	3,500	2,500	700	500
A'zaz	800	4,500	20,000	11,000	3,000	4,000	7,000	7,000	5,000	2,000	1,800	1,500	500	500
Badama	900	3,500	12,000	8,500	4,625	3,875	6,000	7,500	3,500	2,500	3,000	1,500	500	350
Bennsh	975	3,600	26,050	15,900	2,000	4,300	4,700	5,700	2,600	2,500	2,500	2,400	525	450
Bulbul	1,000	4,200	17,500	8,000	2,700	3,800	5,400	6,500	2,900	2,000	2,400	1,200	450	200
Dana	1,000	4,225	15,000	8,500	2,600	3,800	5,500	6,550	3,000	2,200	2,500	1,275	500	300
Daret Azza	1,000	3,375	9,000	9,500	3,100	7,250	6,000	6,750	5,500	4,500	3,875	2,625	775	563
Darkosh	1,000	2,750	20,000	13,000	4,300	3,500	6,750	11,500	4,000	2,875	3,500	1,850	750	550
Ehsem	775	5,000	23,000	9,000	1,500	4,500	NA	NA	NA	NA	NA	NA	NA	NA
Ghandorah	950	5,500	NA	NA	1,000	4,000	NA	NA	NA	NA	NA	NA	NA	NA
Harim	750	3,250	15,500	NA	5,500	3,250	11,000	9,000	4,500	3,000	3,500	1,500	1,000	500
Haritan	NA	NA	NA	NA	NA	NA	NA	NA	NA	NA	NA	NA	NA	NA
Idlib	1,200	2,500	6,500	12,250	3,000	3,000	3,500	4,000	2,500	2,000	2,000	1,500	700	400
Jandairis	850	3,000	22,500	9,625	2,050	2,750	7,000	15,000	5,000	2,250	3,250	1,550	1,000	700
Janudiyeh	700	NA	NA	NA	5,000	4,500	NA	NA	NA	NA	NA	NA	NA	NA
Jarablus	900	5,200	NA	NA	1,000	3,400	NA	NA	NA	NA	NA	NA	NA	NA
Jisr-Ash-Shugur	1,000	4,750	NA	NA	1,000	3,750	NA	NA	NA	NA	NA	NA	NA	NA
Kafr Nobol	800	4,750	7,500	8,000	3,250	3,750	7,000	8,000	4,750	2,500	2,000	2,500	1,150	850
Kafr Takharim	1,000	4,300	7,500	10,000	1,600	4,000	4,500	7,000	4,000	3,000	3,500	2,500	500	300

## MEDIAN WINTERISATION ITEMS

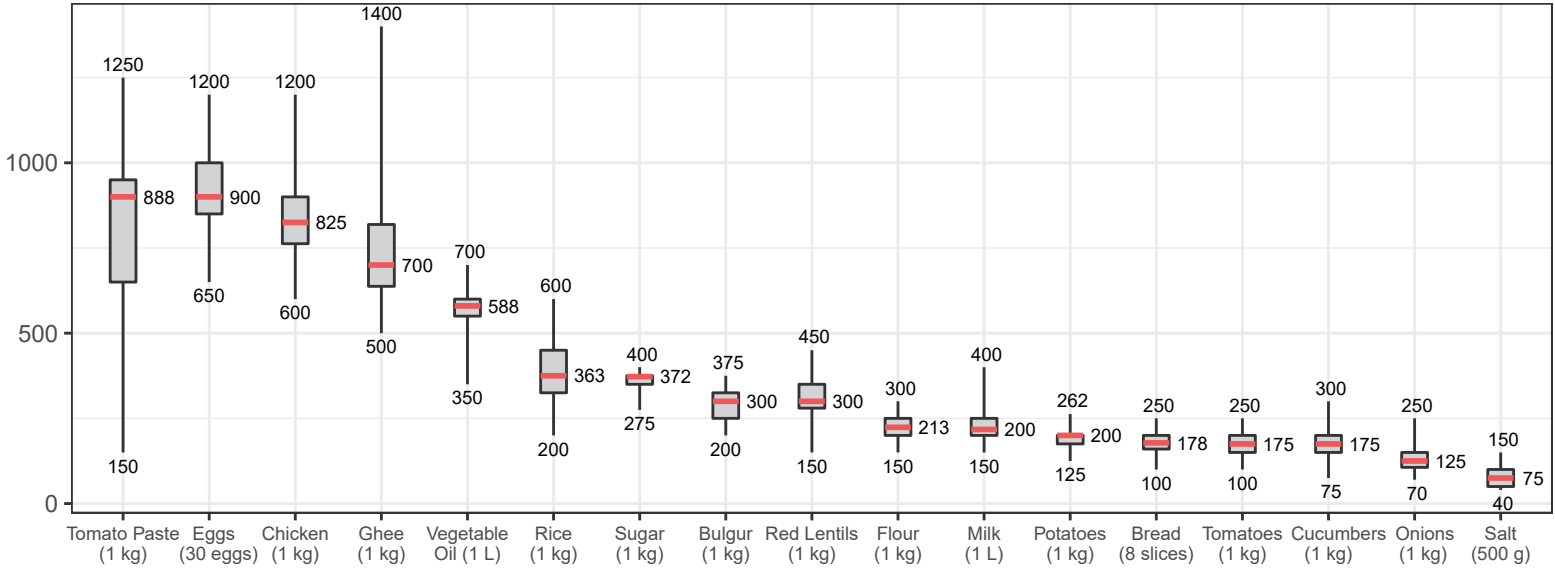
Per 1 piece, Syrian Pounds

Sub-district	Jerry cans	Plastic sheets	Winter carpets	Kerosene/diesel heaters	Winter blanket	Mattress	Men's winter jacket	Women's winter jacket	Children's winter jacket	Men's winter boots	Women's winter boots	Children's winter boots	Adult hat	Children's hat
Maaret Tamsrin	900	3,750	10,750	5,500	1,225	3,250	6,000	8,000	3,500	2,500	2,500	1,800	500	400
Ma'arrat An Nu'man	850	5,500	10,375	8,000	2,000	3,875	7,750	12,250	5,000	1,650	1,400	1,100	650	500
Ma'btali	NA	NA	NA	NA	NA	NA	NA	NA	NA	NA	NA	NA	NA	NA
Mare'	800	2,500	35,000	NA	750	2,500	7,500	15,000	5,000	1,500	NA	1,000	1,000	700
Mhambal	750	3,700	16,750	NA	3,125	3,200	NA	NA	NA	3,000	3,500	2,000	NA	NA
Qourqeena	1,200	5,250	17,500	10,000	2,550	6,250	11,100	9,000	5,000	3,000	3,500	1,500	1,100	400
Salqin	900	2,588	26,000	NA	2,100	5,250	6,500	7,000	5,250	4,500	4,000	3,250	600	NA
Saraqab	775	3,050	6,500	9,350	1,850	2,525	4,800	5,400	2,750	2,600	2,400	2,400	550	500
Sarmin	500	4,250	28,000	6,500	1,275	6,250	2,000	2,000	1,200	NA	NA	NA	NA	NA
Sharan	500	5,500	NA	NA	1,250	5,000	NA	NA	NA	NA	NA	NA	NA	NA
Sheikh El-Hadid	1,200	1,500	NA	NA	3,250	3,500	5,000	10,000	3,000	3,500	5,000	2,500	1,000	500
Suran	775	3,575	22,500	7,250	2,000	3,250	5,750	6,000	3,500	2,000	1,800	1,400	750	550
Teftnaz	713	4,125	7,100	11,200	1,900	3,300	4,700	5,300	2,700	2,500	2,500	2,200	550	500
Zarbah	500	NA	NA	NA	NA	NA	NA	NA	NA	NA	NA	NA	NA	NA
Ziyara	NA	NA	NA	NA	NA	NA	NA	NA	NA	NA	NA	NA	NA	NA



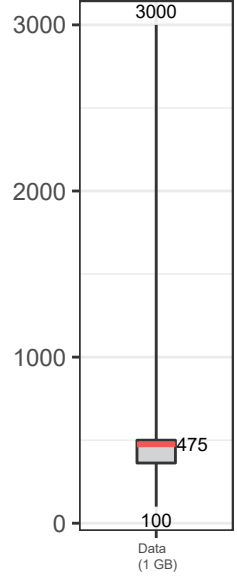
### ASSESSED FOOD ITEMS

Syrian Pounds



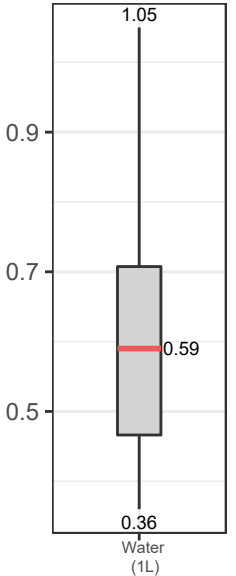
### CELLPHONE DATA

Syrian Pounds



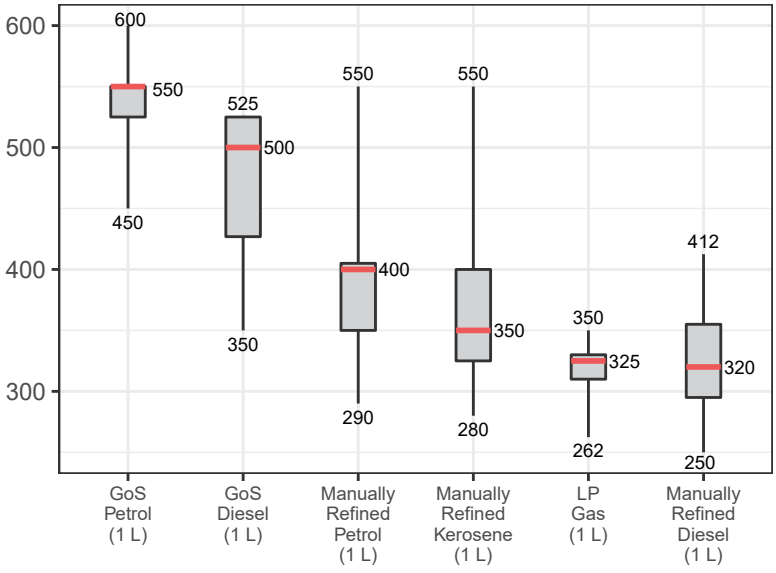
### WATER TRUCKING

Syrian Pounds



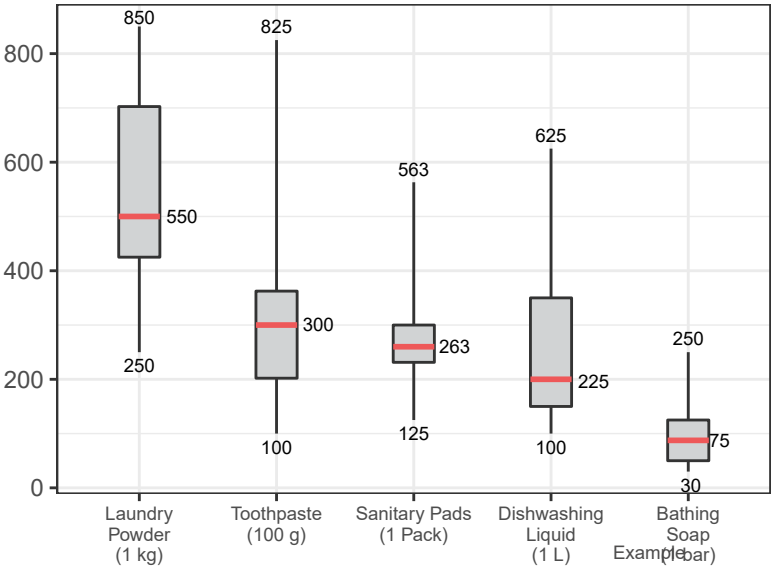
### ASSESSED FUEL ITEMS

Syrian Pounds

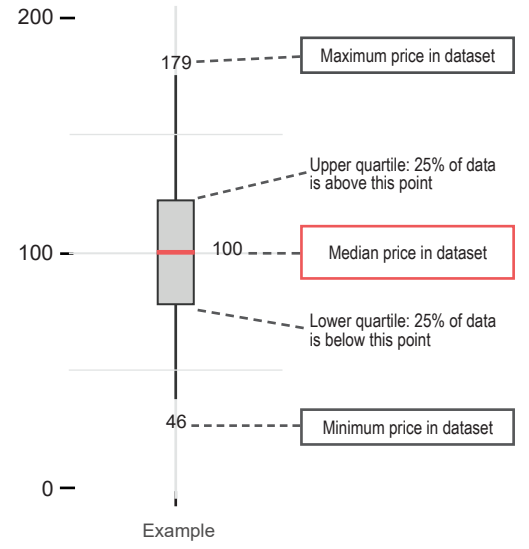


### ASSESSED HYGIENE ITEMS

Syrian Pounds



### READING BOXPLOTS



## METHODOLOGY

In order to be included in the Syria Market Monitoring Exercise, markets must be permanent in nature, large enough to support at least two wholesalers, and diverse enough to provide a sufficient variety of goods and commodities. Additionally, the shops surveyed within each market must be housed in permanent structures and must sell certain items to be eligible for inclusion. Participating organisations train their enumerators on the Market Monitoring methodology and data collection tools using standard training materials developed by REACH. Each enumerator aims to assess three to five shops of each type in the main market in their assigned sub-district, using surveys to collect information about the cheapest prices of each item and whether there are any barriers in the supply chain. In

sub-districts where direct surveying by enumerators is not possible, data collection is conducted remotely through key informants such as shop owners, suppliers and consumers. A survey form is deployed on KoBo each month to capture price and stock information from different types of establishments, including grocery stores, fuel traders, currency exchange shops, water trucking services and mobile phone shops, among others. Nearly all participating partners submit their data to these KoBo forms, using the KoBoCollect Android app to upload data. A small number of partners, by prior permission, collect data using fully harmonised data collection tools deployed on other platforms, then submit their raw data to REACH for standardisation, compilation and cleaning. Following

data collection, REACH compiles and cleans all partners' data, normalising prices and cross-checking outliers. The cleaned data is then analysed by SMEB costs, components of the SMEB, and by commodities. These trends are observed at the sub-district-level and, when possible, at the community-level. Prices are divided into quartiles and boxplots are created to assist CBR-TWG members in understanding the distribution of prices across the northeast and northwest of Syria. To illustrate local variations in prices and availability, REACH uses the collected data to map the price of the SMEB in each sub-district and adds illustrations of surrounding border crossings, with data sourced from the United Nations Office for the Coordination of Humanitarian Affairs (OCHA). In addition, each SMEB

component costs and transport fuel prices are graphed to visualize trends over time. The cleaned datasets are available on the [Humanitarian Data Exchange](#) website and are distributed to all participating partners, as well as to interested clusters and the broader humanitarian community.

### Seasonal items

Winterisation items have been added to the market monitoring exercise and data collection will continue for these items over winter, until February 2020. Whilst other commodities are bought regularly by families, winterisation items are not expected to be bought regularly and may be one-off purchases for each family member.

## CHALLENGES AND LIMITATIONS

As the Syria Market Monitoring Exercise currently includes 14 partners based in 2 hubs, achieving a consistent approach is inherently challenging. Participating organisations are therefore requested to adopt harmonised data collection methodologies and tools to ensure that the data uploaded is as accurate as possible. Because this exercise collects data directly from vendors and relies on partner organizations for its wide coverage, Market Monitoring may sporadically lose coverage temporarily or for longer periods of time owing to challenges in accessing locations or due to loss in the shared data collection capacity of the project. This impacts the ability to report on trends, as can be seen in the line graphs and 'NA' values in the tables.

## CHANGES TO COVERAGE

Given security and access constraints in the south of Syria and in northeast Syria, data collection has been unable to take place since July 2018 and October 2019, respectively.

## CALCULATING 'MEDIAN CHEAPEST PRICE'

This figure is calculated by taking the median of the minimum-reported prices of a region's sub-districts. In turn, the minimum-reported prices for each sub-district were taken from the median of the minimum-reported prices of the constituent towns assessed.

## CALCULATING SURVIVAL MINIMUM EXPENDITURE BASKET (SMEB) COSTS

The cost of a SMEB is calculated for each assessed sub-district by calculating the median cheapest price of each SMEB commodity in that sub-district, then multiplying these medians by the number of units that an average Syrian household requires to purchase in a month. The composition of the SMEB can be found on [page 1](#). SMEB vegetables includes potatoes, tomatoes, onions and cucumbers.

## CALCULATING PRICE TRENDS OVER TIME

One month and six-month price changes and trends are calculated only with the communities of a sub-district with consistent coverage across months. For the current month's regional SMEB cost, all assessed communities are included in determining medians; thus, prices and percentage changes within the Costs and Changes tables may differ from the current month's regional SMEB cost.

## WHAT IS THE CASH-BASED RESPONSES TECHNICAL WORKING GROUP?

The Cash-Based Responses Technical Working Group (CBR-TWG) was established in May 2014 to analyse the impact of the ongoing conflict on markets in Syria and guide the implementation of humanitarian cash and voucher programmes within those markets. REACH and the CBR-TWG have been partners on the Syria Market Monitoring Exercise since early 2015.

## ABOUT REACH

REACH Initiative facilitates the development of information tools and products that enhance the capacity of aid actors to make evidence-based decisions in emergency, recovery and development contexts. The methodologies used by REACH include primary data collection and in-depth analysis, and all activities are conducted through inter-agency aid coordination mechanisms. REACH is a joint initiative of IMPACT Initiatives, ACTED and the United Nations Institute for Training and Research - Operational Satellite Applications Programme (UNITAR-UNOSAT). For more information please visit our website:

[www.reach-initiative.org](http://www.reach-initiative.org). You can contact us directly at: [geneva@reach-initiative.org](mailto:geneva@reach-initiative.org) and follow us on Twitter [@REACH\\_info](https://twitter.com/REACH_info)