

Average length of time HHs have lived in their current location - by neighborhood

- 0 to 6 months
- 7 to 9 months
- 10 to 12 months
- 13 to 24 months

No data

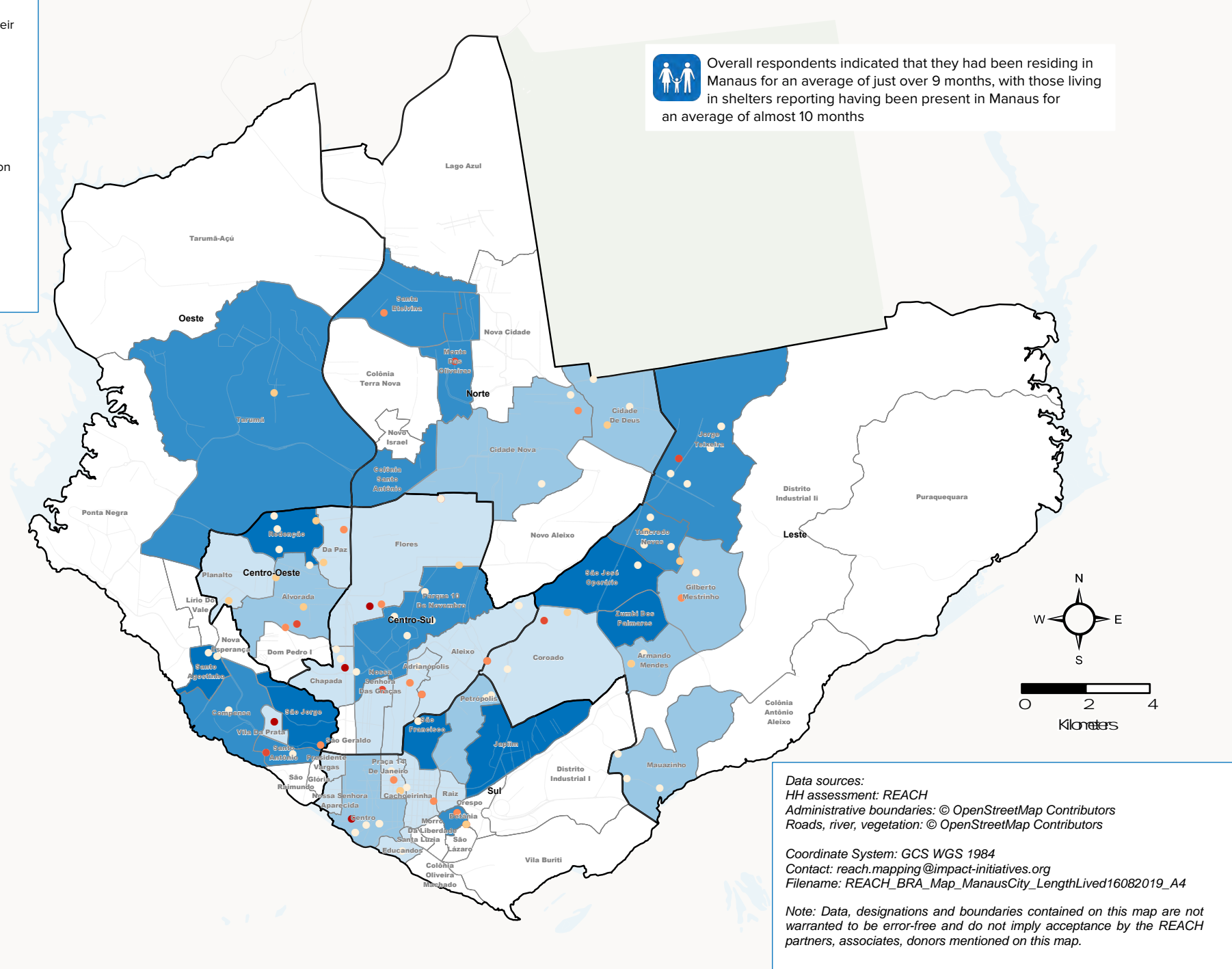
Sampled HH length of stay in current location

- 0 to 6 months
- 7 to 9 months
- 10 to 12 months
- 13 to 24 months
- More than 24 months

Zone boundary



Overall respondents indicated that they had been residing in Manaus for an average of just over 9 months, with those living in shelters reporting having been present in Manaus for an average of almost 10 months



Data sources:
HH assessment: REACH
Administrative boundaries: © OpenStreetMap Contributors
Roads, river, vegetation: © OpenStreetMap Contributors

Coordinate System: GCS WGS 1984
Contact: reach.mapping@impact-initiatives.org
Filename: REACH_BRA_Map_ManauCity_LengthLived16082019_A4

Note: Data, designations and boundaries contained on this map are not warranted to be error-free and do not imply acceptance by the REACH partners, associates, donors mentioned on this map.